

# LATERAL 309, FOUR MILE CREEK SEWER SANITARY SEWER SYSTEM IMPROVEMENTS TO SERVE SMITHMOOR 10TH ADDITION, PHASE 1 WICHITA, KANSAS

MICHAEL E. LINDEBAK, P.E., CITY ENGINEER  
PROJECT NO.: 468-83281  
OCA# 743877

## GENERAL NOTES

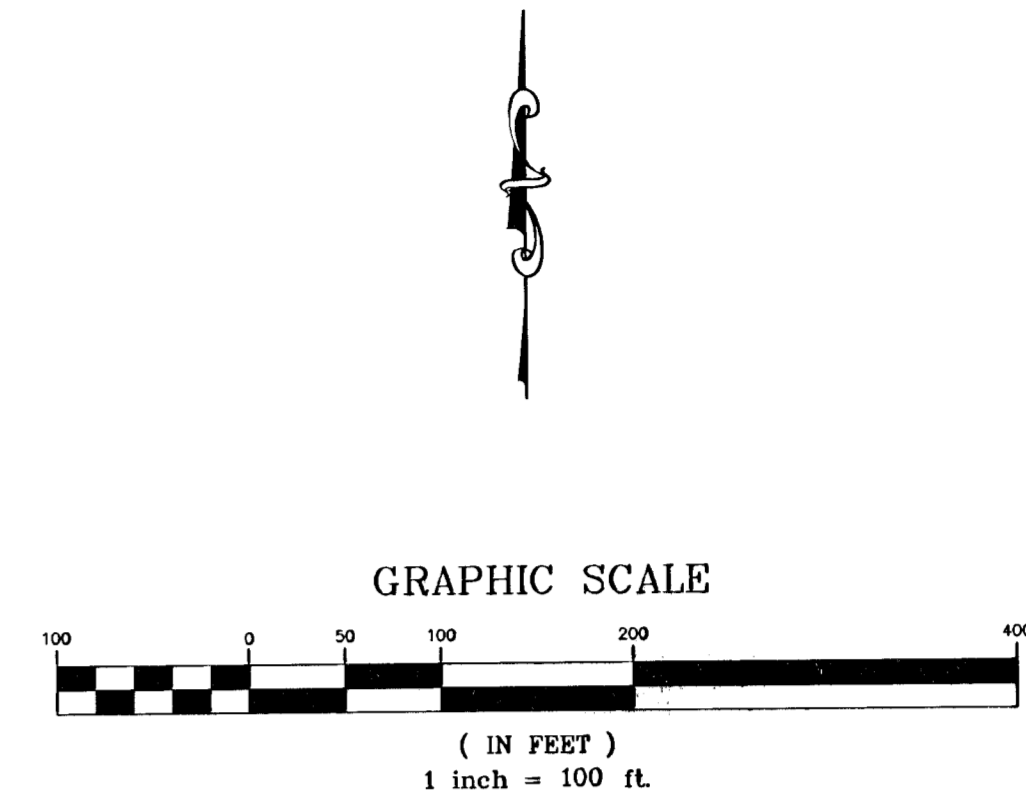
- Contractor will be required to provide notice to utility companies a minimum of twenty-four (24) hours prior to any excavation, as follows:  

Kansas One-Call	687-2470
-----------------	----------

The Contractor must notify the following in case of an emergency:

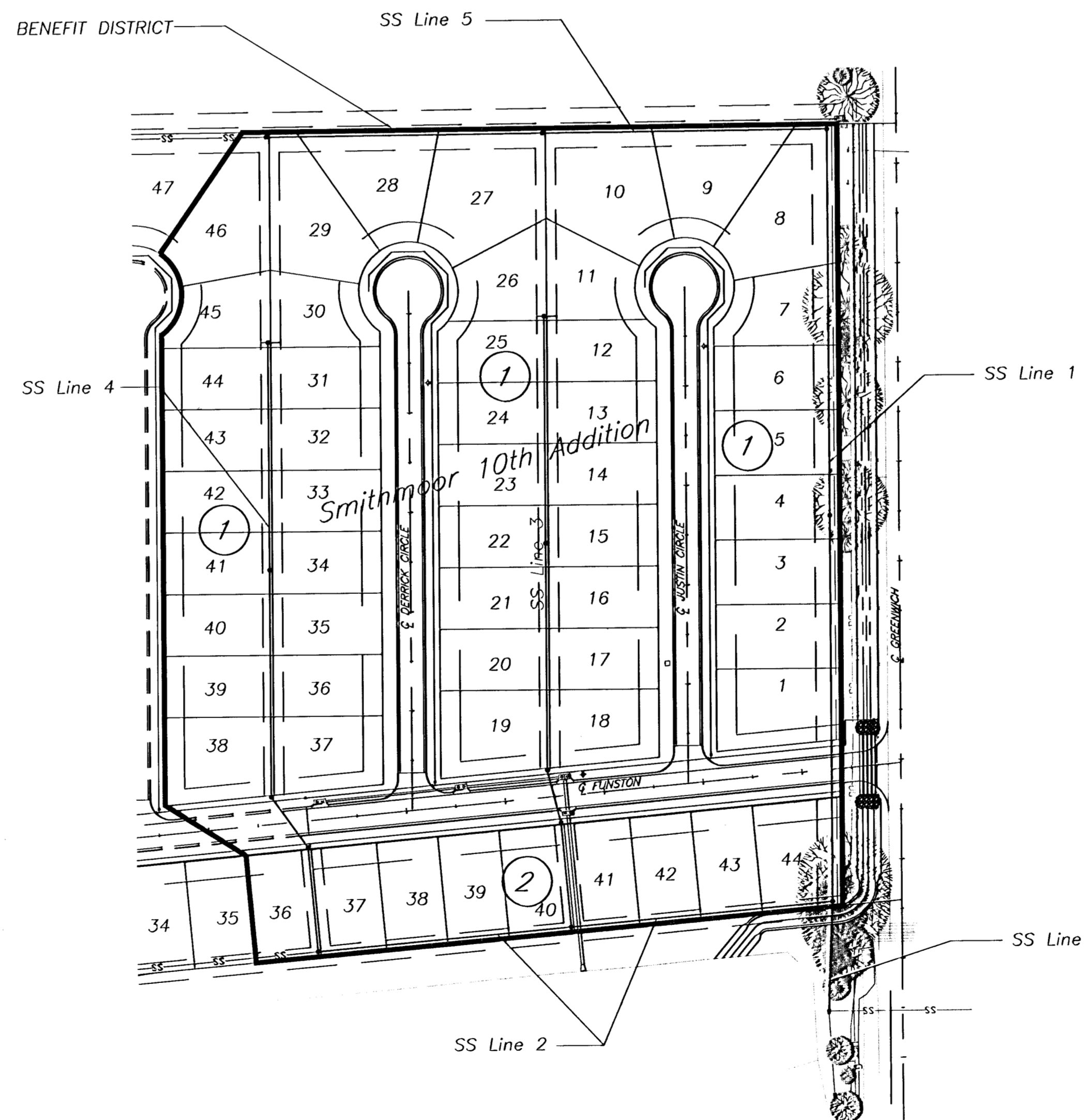
Cox Communications	262-4270
or	263-2061
K.P.L. Gas Service Company	383-8650
Kansas Gas & Electric Company	383-8600
Arkla Gas Company	942-8350
Southwestern Bell Telephone Company	1-571-2611
City of Wichita Water Department	268-4908
City of Wichita Sewer Department	268-4071
Kansas Gas Service	832-3168
or	832-3167
Peoples Natural Gas	942-8811
or	1-800-303-0357
- Exist. utilities and their locations, as shown on the plans, represent the best information obtainable for design. Location information has been obtained from the various utility companies and is either from company record drawings or company-provided field locations. The Contractor will be required to work around existing utilities which do not conflict with proposed construction.
- The Contractor to verify utility locations prior to construction of this project.
- Utility service and installation shall be coordinated with the respective utility owners. Contacts are:  

Kansas Gas Service	James Stoltz	831-3122
K.G.E.	Russ Chitwood	261-6251
Peoples Natural Gas	John Stark	942-8811
Wichita Water	Paul Bryant	268-4555
	Steve Palmer	268-4908
Southwestern Bell	Jim Tobin	268-2759
Cox Communications	Mark Anaya	262-4270
- All lawn/turf areas disturbed by construction of proposed improvements shall be restored with sod. All sodding work shall be in accordance with the City of Wichita standard specifications and the City of Wichita administrative regulation No. AR78 which governs cleanup and replacement following construction. All costs for this work shall be subsidiary to the lump sum price bid for "Site Restoration."
- Traffic affected by the construction of this project shall be handled in accordance with the latest edition of the Manual on Uniform Traffic Control Devices.
- All commercial signs to be moved by others prior to construction.
- All areas disturbed by construction operations shall be seeded with rye grass at a rate of 300 lbs/acre immediately following construction in that area. Ground shall be prepared per City of Wichita specifications prior to seeding.



### Index of Sheets:

- Title
- Type 'P' Manholes Detail
- Vertical Riser Detail
- Line 1
- Line 2
- Line 3
- Line 4
- Line 5



### BENCHMARKS:

BM#1 City disc on the SW corner traffic signal base on the NE corner of the intersection of Harry St. and Greenwich Rd. Elev. = 1343.49 USGS

BM#2 "C" cut on the SW corner of the N. Headwall at the east end of pond on the W. side of Greenwich Rd., approx. 1000' S. of Harry St. Elev. = 1341.87 USGS

Booked  
P-201  
12/3/01  
R. D. L.

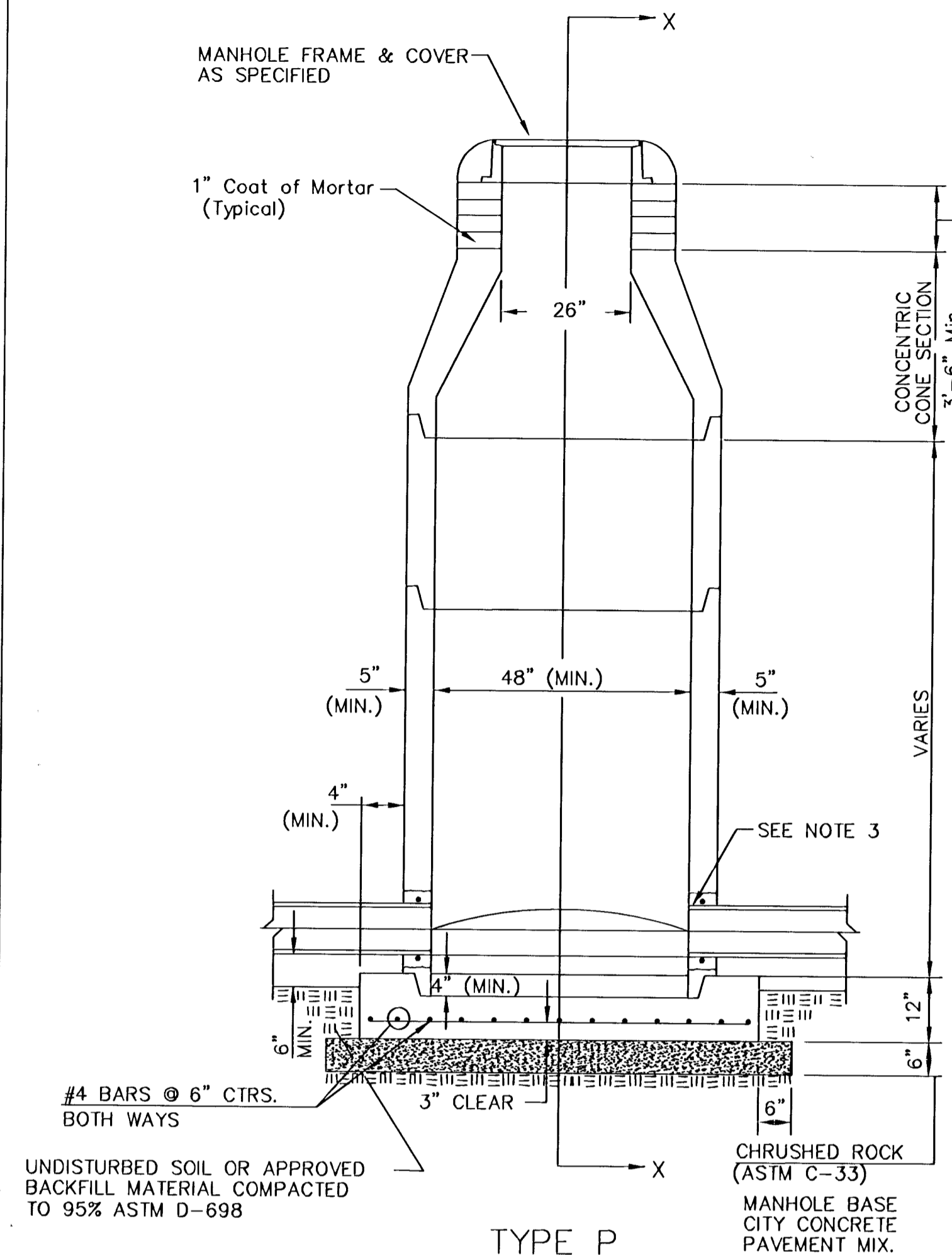


**kemiller**  
engineering

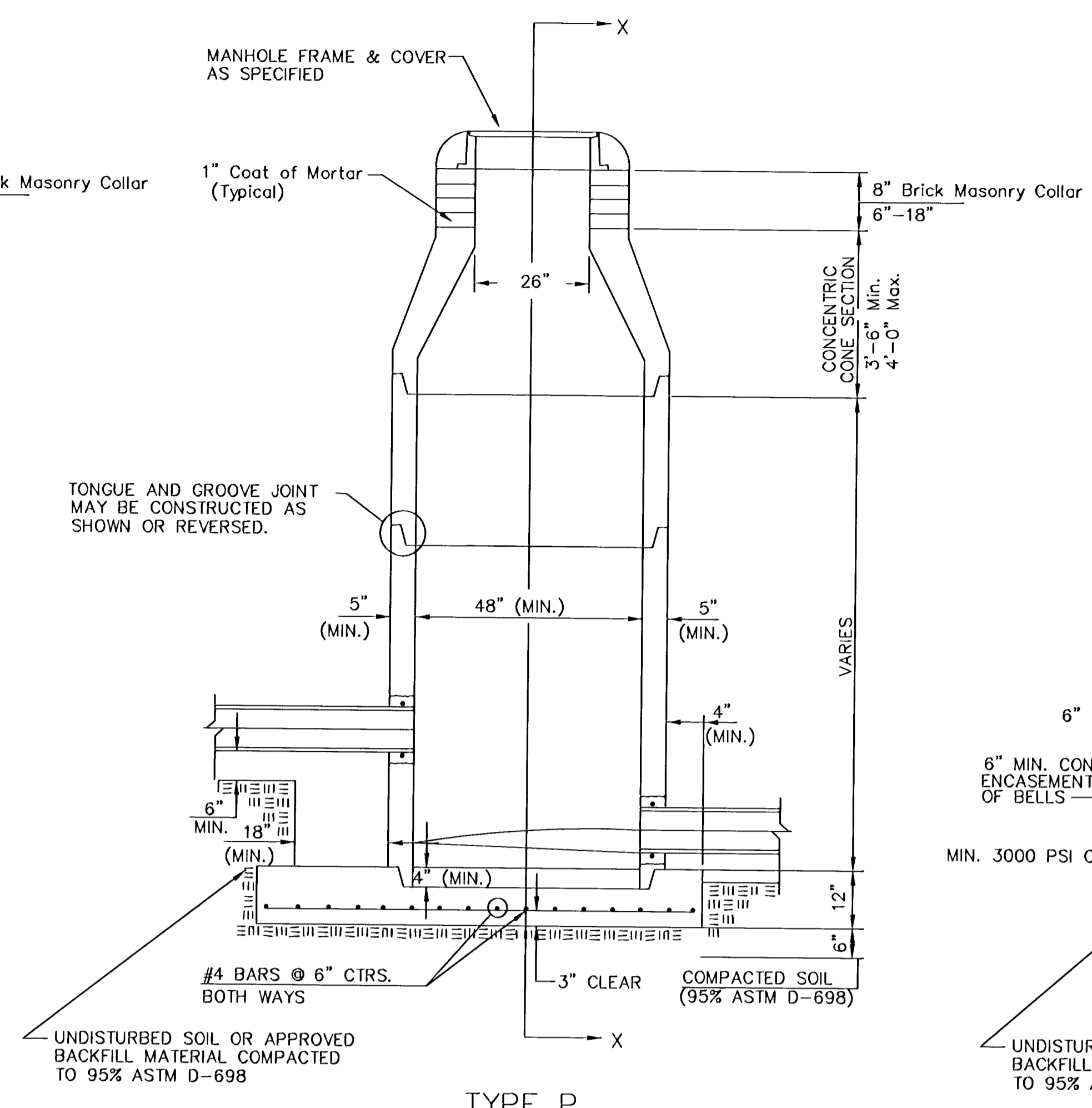
516 S. Market,  
Wichita, KS 67202

316/264-0242

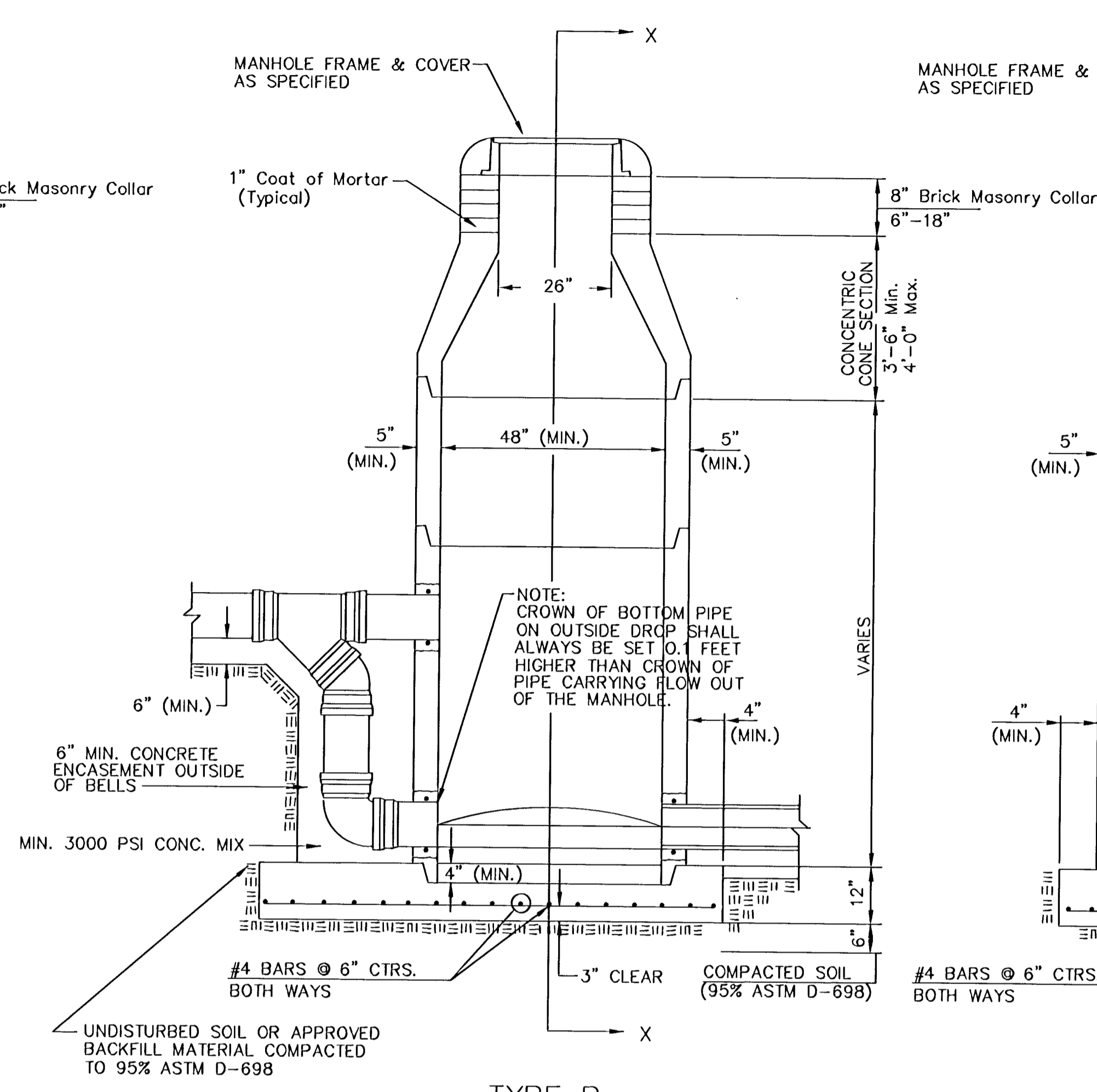
# SEWER APPURTENANCES DETAILS



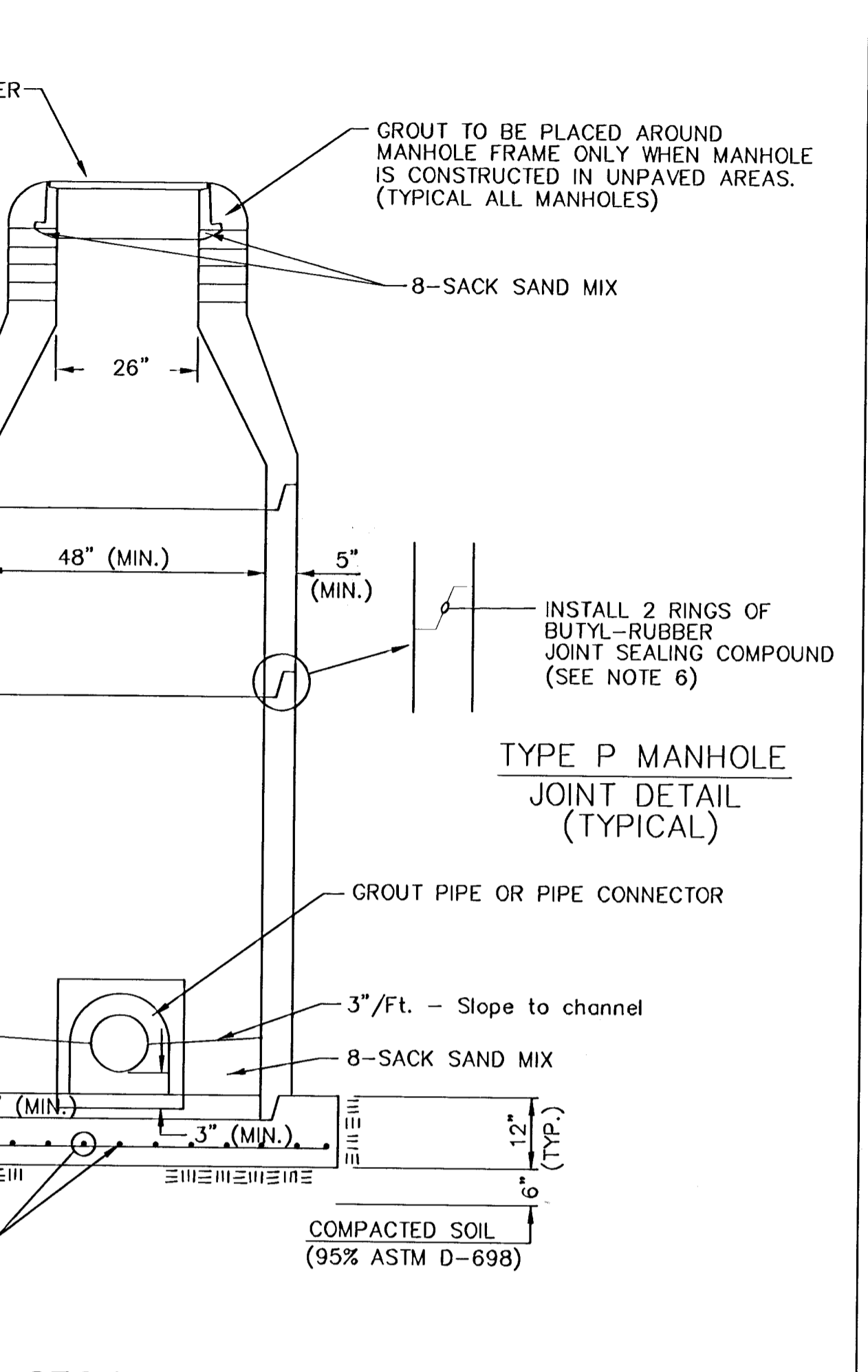
**TYPE P STANDARD MANHOLE**



**TYPE P INSIDE DROP MANHOLE**



**TYPE P OUTSIDE DROP MANHOLE**



**SECTION X (TYPICAL)**

**GENERAL NOTES**  
**PRECAST MANHOLE NOTES**

- ALL PRECAST CONCRETE MANHOLE SECTIONS SHALL CONFORM TO THE LATEST REVISIONS OF A.S.T.M. C478 AS MODIFIED BY THE SPECIFICATIONS.
- NON-SHRINK GROUT SHALL BE NON-METALLIC TYPE.
- APPROVED FLEXIBLE WATERSTOP GASKETS SHALL BE INSTALLED TO JOIN THE SEWER TO THE MANHOLE WALL WHEN A.B.S. COMPOSITE PIPE OR P.V.C. PIPE IS USED. FOR OTHER TYPES OF PIPE THE SEWER SHALL BE GROUTED IN PLACE WITH NON-SHRINK GROUT. THE SEWER PIPE SHALL BE SUPPORTED WITH CONCRETE ENCASUREMENT A MINIMUM OF 3 FEET FROM THE MANHOLE WALL AND TO THE FIRST JOINT FOR V.C.P. SUCH THAT THE JOINT REMAINS FLEXIBLE.
- ALL INSIDE SURFACES OF THE CONCRETE MANHOLE WHICH WOULD BE EXPOSED TO SEWER GAS SHALL BE COATED WITH 2 COATS NEMEC SERIES 66 HI-BUILD EPOKOLINE, DRY THICKNESS OF 8 MILS (MIN.)
- EXTERIOR MANHOLE WALLS SHALL BE COATED WITH 1 COAT MOBILARMA 633 BITUMINOUS COATING.
- JOINT SEALING COMPOUND SHALL BE KENT SEAL NO. 2 OR APPROVED EQUAL.
- PRECAST MANHOLES SHALL BE SET AT LEAST 4 INCHES INTO THE MANHOLE BASE.
- TOP OF MANHOLE FLOOR SLAB SHALL BE AT LEAST 3 INCHES BELOW THE FLOW LINE OF THE OUTLET PIPE TO INSURE SUFFICIENT MINIMUM THICKNESS OF SHAPED INVERT.
- LIFTING HOLES SHALL BE FILLED WITH NON-SHRINK GROUT AND THE INTERIOR SURFACE COATED AS SPECIFIED.
- MORTAR USED IN MASONRY CONSTRUCTION SHALL CONTAIN 8 SACKS OF CEMENT PER CUBIC YARD. CONCRETE USED IN MANHOLE BASES SHALL CONFORM TO THE REQUIREMENTS OF CONCRETE FOR CONCRETE PAVEMENT CONSTRUCTION AS SPECIFIED IN THE CITY STANDARD PAVING SPECIFICATIONS USING CITY CONCRETE PAVEMENT MIX WITHOUT AIR ENTRAINING ADMIXTURE. MORTAR SHALL BE PLACED AROUND THE MANHOLE RING AS SHOWN ON THE DRAWINGS WHEN MANHOLES ARE CONSTRUCTED IN UNPAVED AREAS. MANHOLES CONSTRUCTED WHERE PIPE SIZES ARE SMALLER THAN 24" SHALL HAVE AN INSIDE DIAMETER OF 4". MANHOLES CONSTRUCTED WHERE PIPE SIZES ARE 24" OR LARGER SHALL HAVE AN INSIDE DIAMETER OF 5". COMPLETED MANHOLE SHALL BE WITHOUT LEAKS AND WATER TIGHT.

- REINFORCING STEEL SHALL BE INSTALLED IN THE MANHOLE BASES AND SHALL CONSIST OF NO. 4 BARS PLACED ON 6" CENTERS IN BOTH DIRECTIONS. THE MANHOLE BASE REINFORCEMENT SHALL BE PLACED AT LEAST 3" ABOVE THE BOTTOM OF THE MANHOLE BASE. ALL COSTS FOR FURNISHING AND INSTALLING REINFORCING STEEL SHALL BE INCLUDED IN THE UNIT PRICE BID FOR THE MANHOLE.
- OPENINGS SHALL BE CUT INTO THE MANHOLE WALL WHEN OUTSIDE DROPS ARE CONSTRUCTED ON EXISTING MANHOLES. SUCH OPENINGS CUT INTO EXISTING MANHOLES SHALL BE AS SMALL AS PRACTICAL TO FACILITATE INSTALLING AND GROUTING THE NEW PIPE IN PLACE. WATERSTOP GASKETS SHALL BE USED WITH P.V.C. AND A.B.S. COMPOSITE PIPE. THE NEW PIPE SHALL BE GROUTED INTO THE OPENING USING AN APPROVED NONSHRINK GROUT FOR THE FULL MANHOLE WALL THICKNESS. THE EXTERIOR OF THE COMPLETED CONNECTION SHALL BE SEALED WITH AN APPROVED BITUMINOUS COATING SUCH THAT THE CONNECTION WILL BE WATER TIGHT. FLOOR OF MANHOLE SHALL BE MODIFIED TO FORM NEW FLOW CHANNEL FOR THE NEW CONNECTION AS INDICATED BY THE DRAWING. THIS WORK, INCLUDING MODIFICATION OF MANHOLE FLOOR, SHALL BE PAID FOR AT THE UNIT PRICE BID FOR OUTSIDE DROP STACK CONSTRUCTED ON EXISTING MANHOLE.
- THE FLOORS OF ALL MANHOLES SHALL BE SHAPED WITH FLOW CHANNELS SUCH THAT THE MANHOLES WILL BE SELF-CLEANING AND FREE OF AREAS WHERE SOLIDS COULD BE DEPOSITED AS SEWAGE FLOWS THROUGH THE MANHOLE FROM ALL INLET PIPES TO THE OUTLET PIPE. FLOW CHANNELS SHALL BE FORMED TO MATCH THE BOTTOM HALVES OF THE INFLOWING PIPES AND THE OUTFLOWING PIPE AS SHOWN BY THE DRAWINGS EXCEPT FOR INSIDE DROP MANHOLES. FLOW CHANNELS FOR INSIDE DROP MANHOLES SHALL BE CONSTRUCTED AS INDICATED BY THE DRAWING. MANHOLE FLOORS SHALL HAVE SLOPES OF 3 INCHES PER FOOT IN THE AREAS OUTSIDE OF THE FLOW CHANNELS SLOPED TOWARD THE FLOW CHANNELS. PIPES LAID THROUGH MANHOLES SHALL HAVE THE TOP HALF REMOVED TO NEAT LINES FOR THE FULL INSIDE DIAMETER OF THE MANHOLE. MANHOLE FLOORS SHALL THEN BE SHAPED AROUND THE BOTTOM HALF OF THE PIPE WHICH FORMS THE FLOW CHANNEL.
- PIPES INSTALLED WITHIN THE EXCAVATION MADE FOR THE MANHOLE SHALL BE CRADLED WITH CONCRETE TO THE LIMITS OF THE MANHOLE EXCAVATION. WHEN CLAY PIPE IS USED, THE CRADLE SHALL EXTEND TO THE FIRST JOINT OUTSIDE THE MANHOLE. THE CRADLE SHALL BE TERMINATED AT THE CLAY PIPE JOINT IN A MANNER WHICH WILL MAINTAIN THE FLEXIBILITY OF THE JOINT. COST OF CRADLE WITHIN MANHOLE EXCAVATION OR TO CLAY PIPE JOINTS ADJACENT TO MANHOLE SHALL BE INCLUDED IN THE UNIT PRICE BID FOR THE MANHOLE.

- MANHOLE COVER CASTINGS AND MANHOLE FRAME CASTINGS SHALL CONFORM TO THE REQUIREMENTS AS INDICATED IN THE STANDARD SPECIFICATIONS AND AS SHOWN IN THE STANDARD DETAIL DRAWING.
- THE VERTICAL DROP IN INSIDE DROP MANHOLES SHALL NOT EXCEED 2' FOR INFLOWING PIPES SIZED 12" OR SMALLER AND 2' FOR INFLOWING PIPES LARGER THAN 12". THE CROWNS OF INFLOWING PIPES SHALL NEVER BE SET LOWER THAN THE CROWN OF THE OUTFLOWING PIPE.
- STANDARD MANHOLES AND STANDARD INSIDE DROP MANHOLES SHALL BE BID AS STANDARD MANHOLES FOR THE TYPE AND DIAMETER INDICATED. OUTSIDE DROP MANHOLES SHALL BE BID AS STANDARD OUTSIDE DROP MANHOLES FOR THE TYPE AND DIAMETER INDICATED. ALL MANHOLE DIAMETERS WILL BE 4' UNLESS INDICATED OTHERWISE.
- A BRICK MASONRY COLLAR SHALL BE INSTALLED BETWEEN THE CAST IRON FRAME AND THE CONCENTRIC CONE. THE COLLAR WILL HAVE 8" WALLS AND A VERTICAL HEIGHT OF 6" MINIMUM AND 18" MAXIMUM. A 1" COAT OF MORTAR WILL BE PLASTERED ON THE OUTSIDE OF THE COLLAR. THE USE OF PRE-CAST CONCRETE SPACERS FOR MANHOLE TOP ADJUSTMENT IS ALSO ALLOWED.
- CHRUSHED ROCK CONFORMING TO ASTM C-33 WITH A GRADATION OF NO. 67 SHALL BE INSTALLED AT THE BASE OF THE MANHOLE TO A DEPTH OF NO LESS THAN 6". AND SHALL EXTEND NO LESS THAN 6" OUTSIDE THE DIAMETER OF THE CONCRETE FLOOR OF THE MANHOLE.

<p>THE CITY OF WICHITA</p>	<b>STANDARD TYPE 'P' MANHOLES</b>	
	M. E. LINDEBAK P.E. - CITY ENGINEER	
CITY ENGINEER'S OFFICE CITY HALL - SEVENTH FLOOR 458 NORTH MAIN STREET WICHITA, KANSAS 67202 (316) 268-4501 (316) 268-4114 FAX	PROJECT NUMBER	INDEX CODE
	468-83281	743877
DATE	SHEET 2 OF 9	
JUN 01		

# VERTICAL RISER DETAILS

## ADOPTED AS STANDARD DESIGN

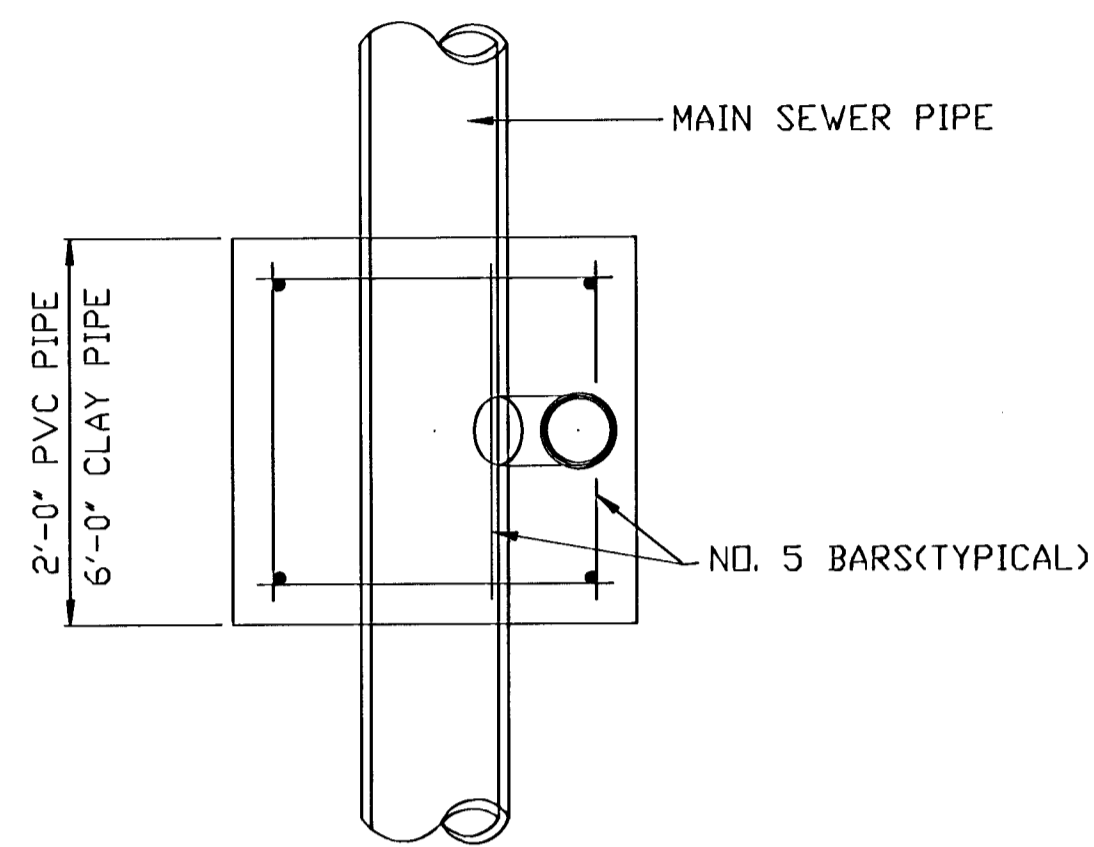
### BY

## CITY OF WICHITA, KANSAS

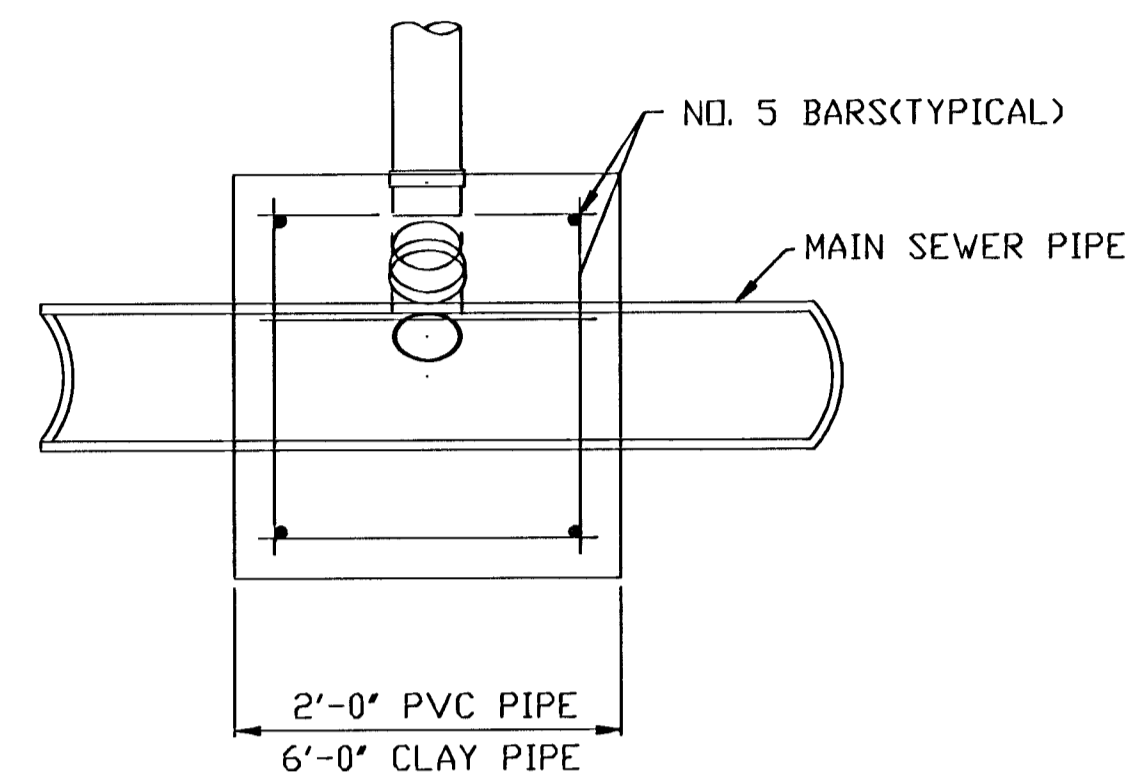
### OCTOBER 1992

GENERAL NOTES

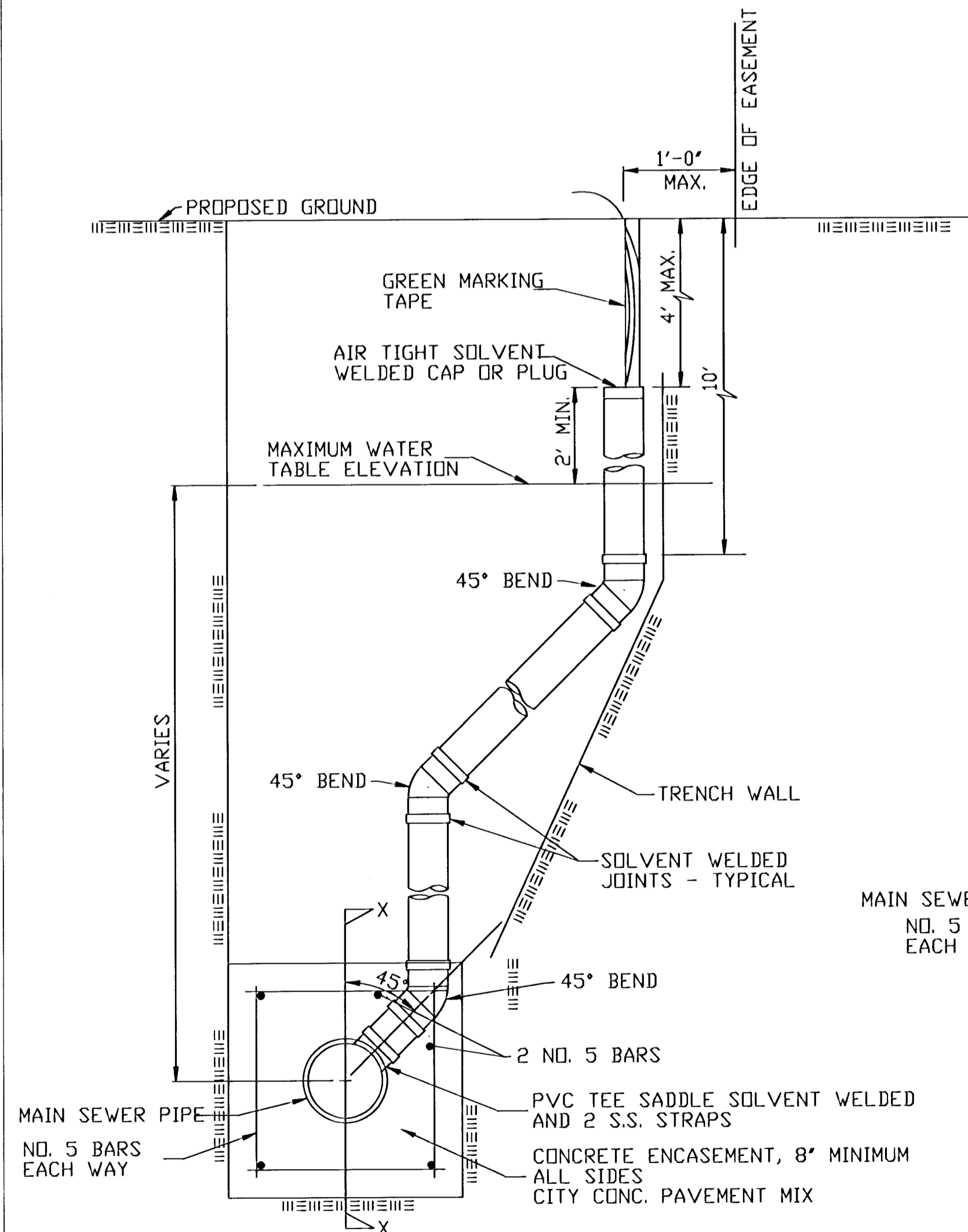
1. **RISERS.** Risers shall be installed to serve all lots or tracts where the sanitary sewer main is below the water table. Risers shall also be installed to serve all lots and tracts where the sanitary sewer main depth is greater than 12 feet below the proposed ground elevation. Installation of risers because of field conditions shall be as approved by the Construction Engineer. The location of the risers to be developed properly shall be approved by the property owner and the Construction Engineer.
2. **PIPE STUBS.** Pipe stubs shall be installed in manholes where locations of manholes will provide satisfactory service connection as determined by the Construction Engineer. The vertical distance between the flowline of the manhole pipe stub and the flowline of the sanitary sewer main out of the manhole shall not exceed 2 feet. Risers shall be utilized at manhole pipe stubs as indicated in Note 1. Manhole pipe stubs shall be set such that the top of the stub is not lower than the top of the sanitary sewer main.
3. **SIZING.** Pipe stubs and risers shall be sized according to the plans and riser table where risers are indicated by the plans. Where risers or pipe stubs are required because of field conditions, the risers and stubs shall be six-inch diameter for commercial or industrial properties and 4" or 6" diameter for residential properties, based on lot size and sanitary sewer main depth. Sizing of risers and stubs shall be approved by the Construction Engineer prior to installation.
4. **RISER OR STUB MATERIAL.** Risers and stubs shall be constructed of Schedule 40 PVC Pipe, meeting the requirements of the latest revision of A.S.T.M. All pipe joints shall be solvent welded.
5. **REINFORCED CONCRETE ENCASUREMENT.** Riser connections to clay pipe sanitary sewers shall be reinforced concrete encased both ways from the riser centerline. The reinforced concrete encasement shall extend three feet from the riser centerline or stop at the first sanitary sewer pipe joint within three feet of the riser centerline. Riser connections to PVC Sanitary Sewer mains shall be reinforced concrete encased one foot each way from the riser centerline. The concrete encasement shall be reinforced using reinforcing steel as shown in the appropriate drawing. The concrete shall conform to the City Standard Specifications for concrete pavement.
6. **BEDDING.** Bedding around the sanitary sewer riser shall be compacted Pipe Bedding Type 1 or 2. The bedding shall be placed and compacted from the depth of the sanitary sewer main to the top of the sanitary sewer riser pipe. Compacted Pipe Bedding Type 1 or 2 shall be required for all risers whether constructed in vertical wall or sloped wall trenches. Bedding material and construction practices shall be approved by the Construction Engineer prior to installation.
7. **SUPPORT OF RISERS.** Sanitary sewer riser pipe shall be supported during trench backfill. The riser pipe shall be held in a vertical position at all times until trench backfill and compaction has been completed. Contractor's methods for supporting and backfilling the riser pipe shall be approved by the Construction Engineer.
8. **PLUGGING.** The ends of the riser pipes and manhole stubs shall be plugged using an airtight solvent welded cap or plug. Cap or plug fittings shall be approved by the Construction Engineer prior to installation. Caps or plugs which do not provide an airtight seal will not be accepted.
9. **TOP OF THE RISER PIPE.** The top elevation of the sanitary sewer riser pipe shall be built per plan elevations, unless otherwise directed by the Construction Engineer. Where riser elevations are not shown on the plans, the top of the risers shall be set at an elevation four feet below the proposed ground surface. If ground water is encountered, the top of the riser pipe shall be set at an elevation two feet (min.) above the maximum water table elevation, regardless of the riser elevation shown on the plans.
10. **MARKING.** Locations of the ends of the sanitary sewer riser pipe shall be marked by fastening green colored plastic tape to the end of the riser. The tape shall be supported by a length of wooden 2 x 4, extending from the top of the riser pipe to the proposed ground surface. The green tape shall be visible and extend one foot above the proposed ground surface. The green tape shall be 4 mil Polyethylene film with a minimum width of three inches, specifically manufactured for the purpose of identification of underground sewers.
11. **LOCATION MEASURES.** The project inspector shall record and document the location of all risers constructed as measured from the nearest manhole, indicating the direction from the manhole, the direction and distance from the main, riser size, and elevation of the top of the riser.
12. **RISER LOCATION.** The riser shall be located per plan if shown. If not shown on the plan, the riser shall be located at the center of the lot, within one foot of the property side of the easement for the lot being served. All riser locations shall be approved by the Construction Engineer prior to installation.
13. **PAYMENT.** "Sanitary sewer risers" shall be paid for at the contract unit price per each, which price shall be full compensation for all pipe, fittings, marking tape, length of wooden 2 x 4, reinforced concrete encasement, support during backfill, backfill, labor, site restoration, and any other items necessary to complete the work.  
 "Manhole stubs" shall be paid for at the contract unit price per each, which shall be full compensation for all labor, material, and incidentals necessary to complete the work including all pipe, fittings, reinforced concrete encasement, and all other items as required and listed for "Sanitary Sewer Risers".



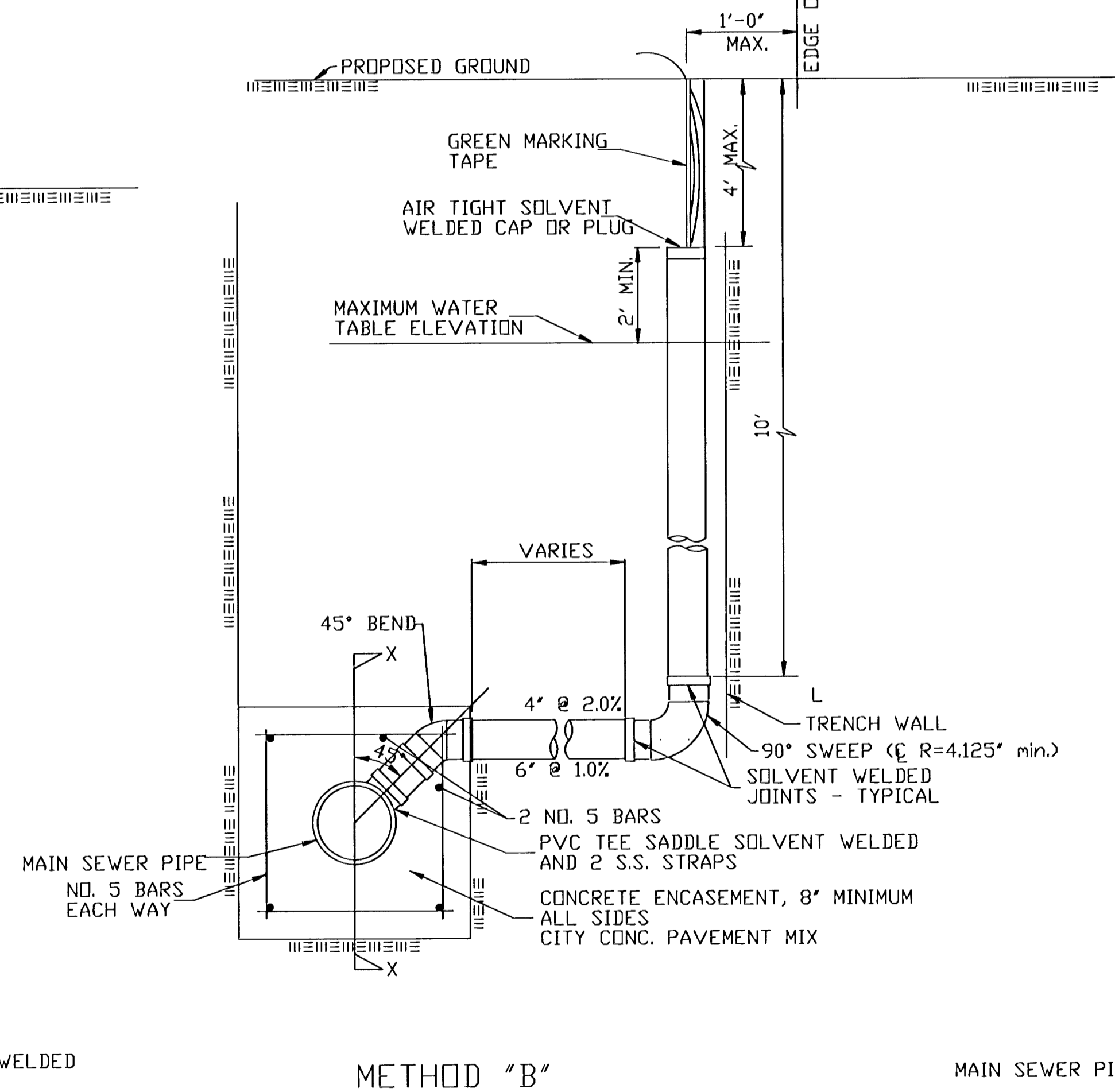
TYPICAL PLAN VIEW



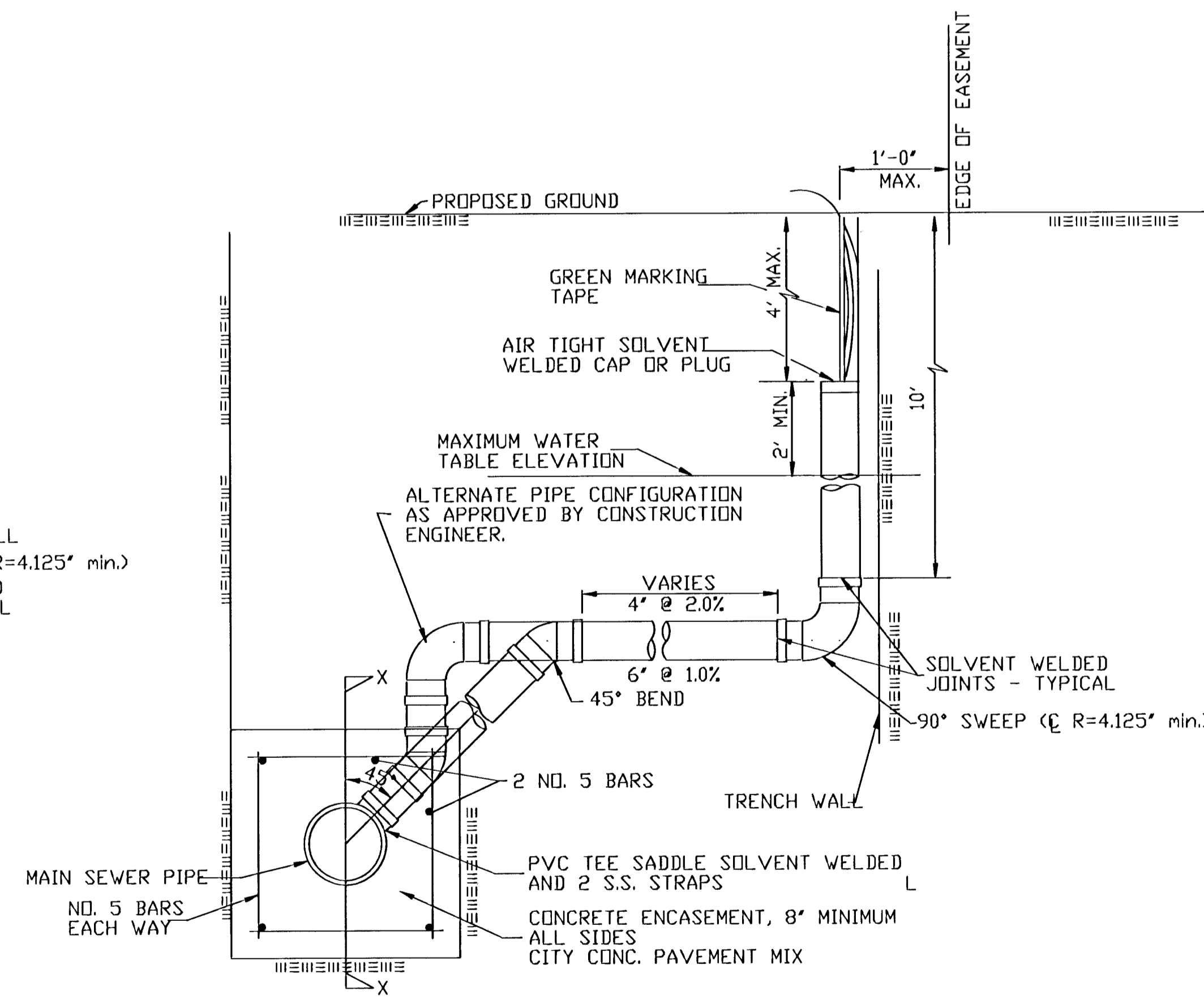
TYPICAL SECTION X-X



METHOD "A"



METHOD "B"



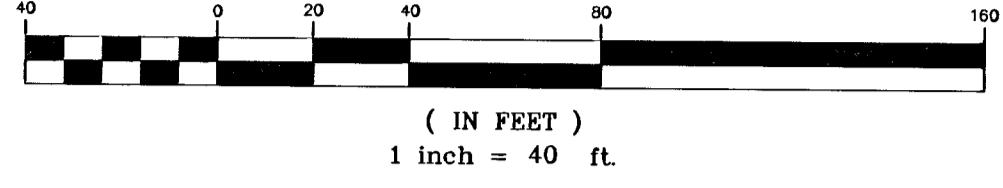
METHOD "C"

NOTE: RISER PIPE REQUIREMENTS AT MANHOLE STUBS SHALL BE SIMILAR TO THOSE SHOWN ABOVE.

<p style="font-size: small; margin: 0;">THE CITY OF WICHITA</p> <p style="font-size: x-small; margin: 0;">CITY ENGINEER'S OFFICE 455 NORTH MAIN STREET WICHITA, KANSAS 67202 (316) 268-4501 (316) 268-4114 FAX</p>	<b>VERTICAL RISER DETAIL</b>	
	M. E. LINDEBAK P.E. - CITY ENGINEER	
	PROJECT NUMBER 468-83281	INDEX CODE 743877
	DATE JUN 01	SHEET 3 OF 9



GRAPHIC SCALE



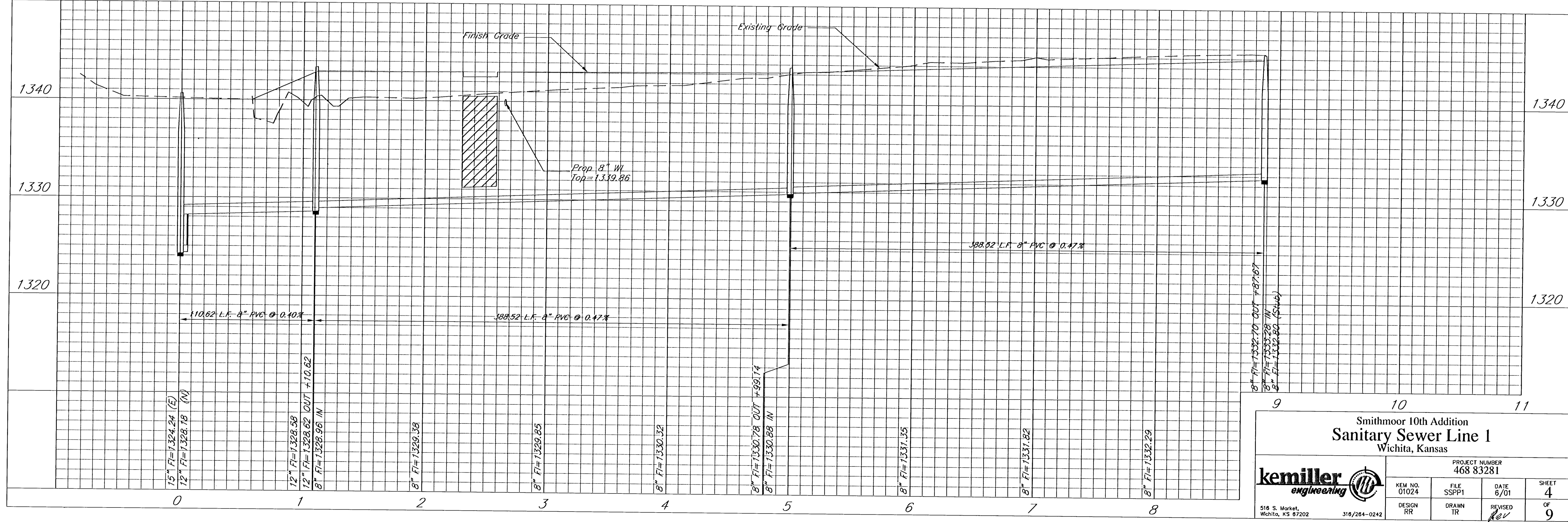
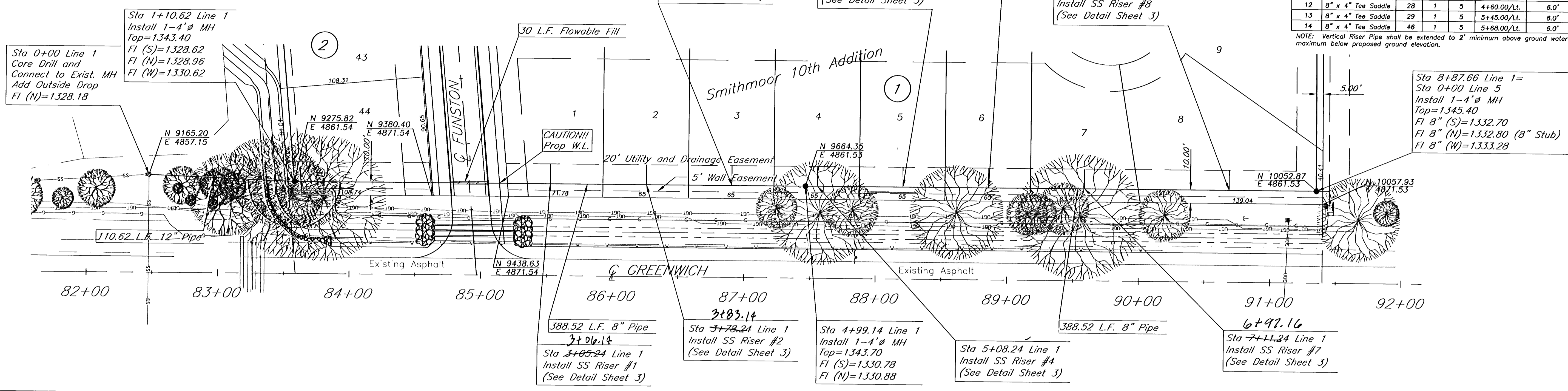
**BENCHMARKS:**

BM#1 City disc on the SW corner traffic signal base on the NE corner of the intersection of Harry St. and Greenwich Rd. Elev. = 1343.49 USGS

BM#2 "□" cut on the SW corner of the N. Headwall at the east end of pond on the W. side of Greenwich Rd., approx. 1000' S. of Harry St. Elev. = 1341.87 USGS

NUMBER	TYPE	LOCATION			FOR INFORMATION ONLY	
		LOT NO.	BLOCK NO.	LINE NO.	STATION/DIRECTION	APPROXIMATE LENGTH OF 4" PIPE VERTICAL HORIZONTAL
1	8" x 4" Tee Saddle	1	1	1	3+05.24/LL	6.0' 15'
2	8" x 4" Tee Saddle	2	1	1	3+78.24/LL	6.0' 15'
3	8" x 4" Tee Saddle	3	1	1	4+43.24/LL	6.0' 15'
4	8" x 4" Tee Saddle	4	1	1	5+08.24/LL	6.0' 15'
5	8" x 4" Tee Saddle	5	1	1	5+73.24/LL	6.0' 15'
6	8" x 4" Tee Saddle	6	1	1	6+38.24/LL	6.0' 15'
7	8" x 4" Tee Saddle	7	1	1	7+11.24/LL	6.0' 15'
8	8" x 4" Tee Saddle	8	1	1	8+21.24/LL	6.0' 15'
9	8" x 4" Tee Saddle	9	1	5	1+00.00/LL	6.0' 15'
10	8" x 4" Tee Saddle	10	1	5	2+30.00/LL	6.0' 15'
11	8" x 4" Tee Saddle	27	1	5	3+40.00/LL	6.0' 15'
12	8" x 4" Tee Saddle	28	1	5	4+60.00/LL	6.0' 15'
13	8" x 4" Tee Saddle	29	1	5	5+45.00/LL	6.0' 15'
14	8" x 4" Tee Saddle	48	1	5	5+68.00/LL	6.0' 15'

NOTE: Vertical Riser Pipe shall be extended to 2' minimum above ground water elevation and 4' maximum below proposed ground elevation.

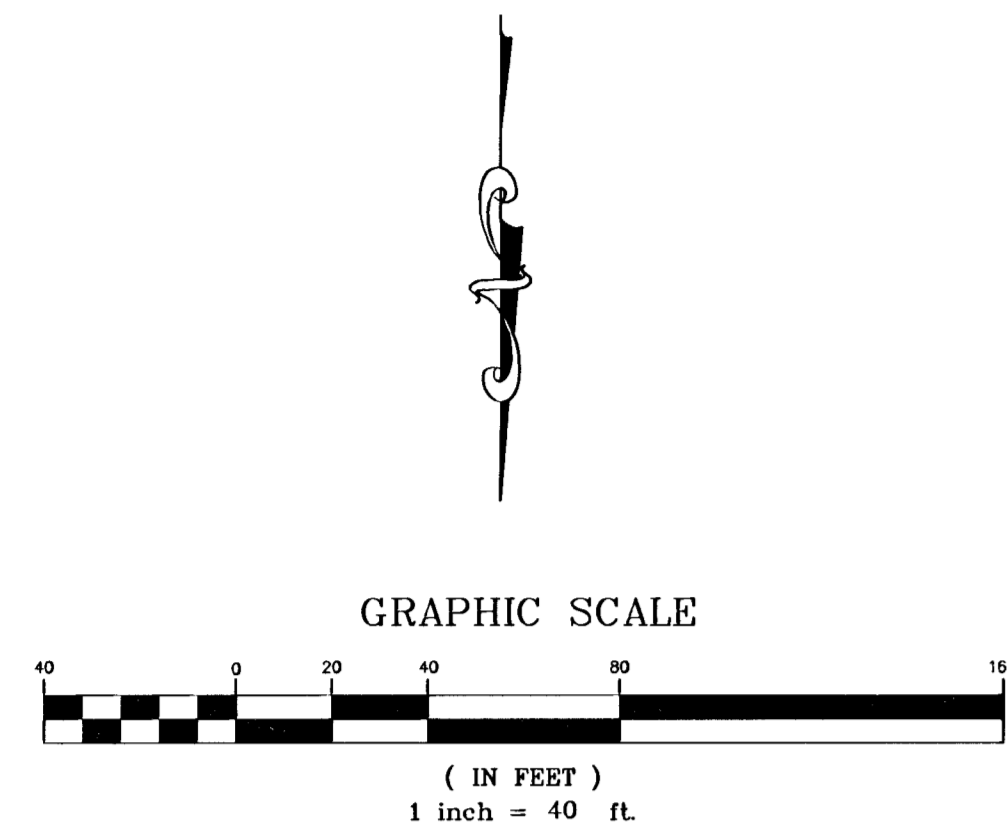


**Smithmoor 10th Addition  
Sanitary Sewer Line 1  
Wichita, Kansas**

PROJECT NUMBER  
**468 83281**

	KEM NO. 01024	FILE SSPP1	DATE 6/01	SHEET 4
	DESIGN RR	DRAWN TR	REVISED REV	OF 9

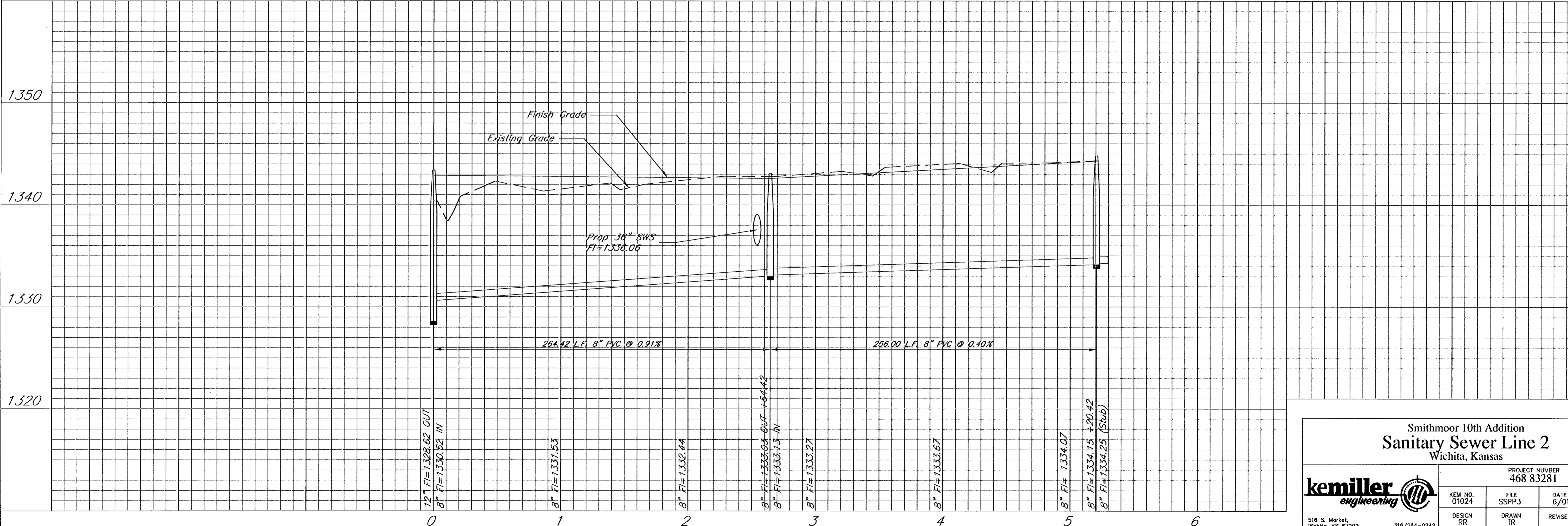
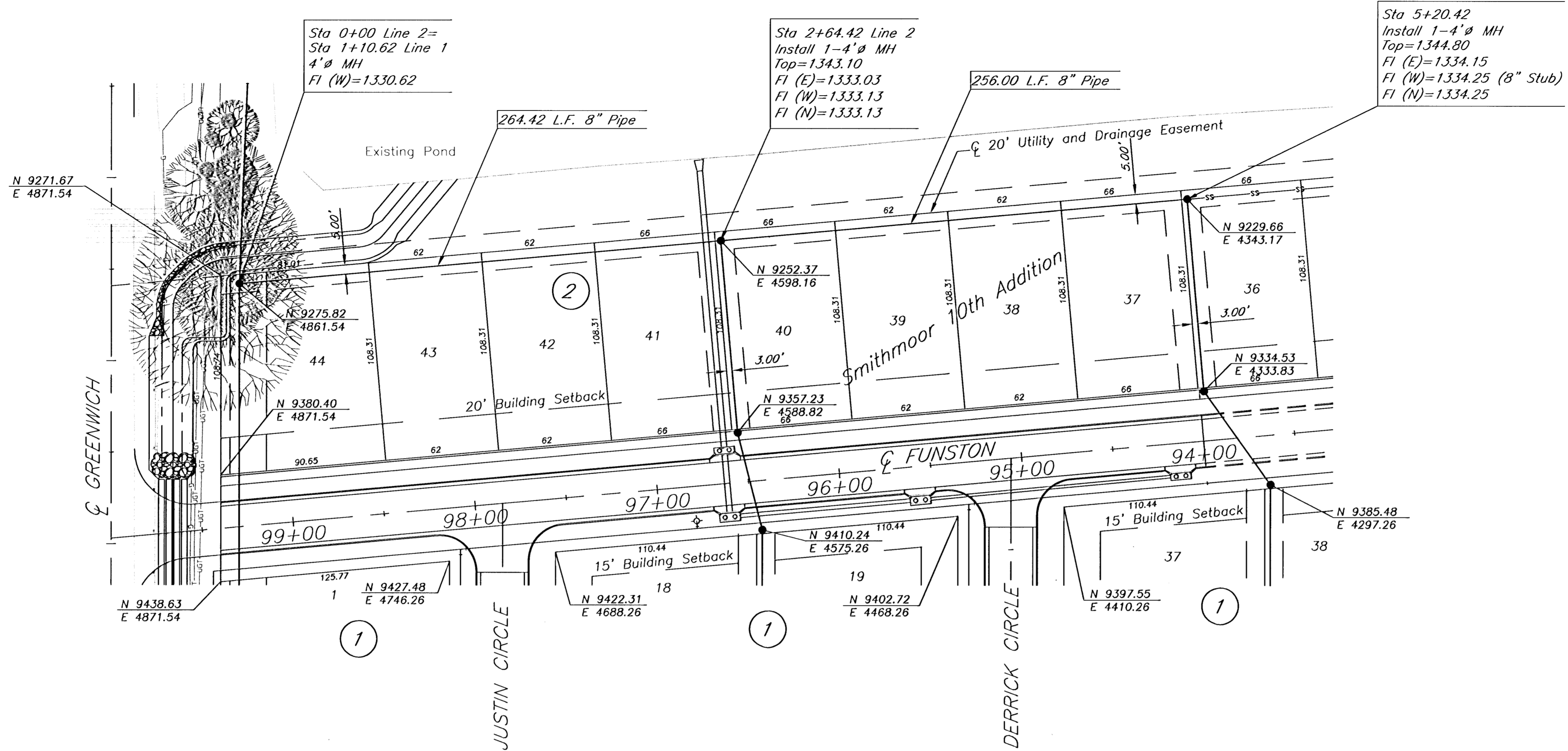
516 S. Market, Wichita, KS 67202      316/284-0242



**BENCHMARKS:**

BM#1 City disc on the SW corner traffic signal base on the NE corner of the intersection of Harry St. and Greenwich Rd. Elev. = 1343.49 USGS

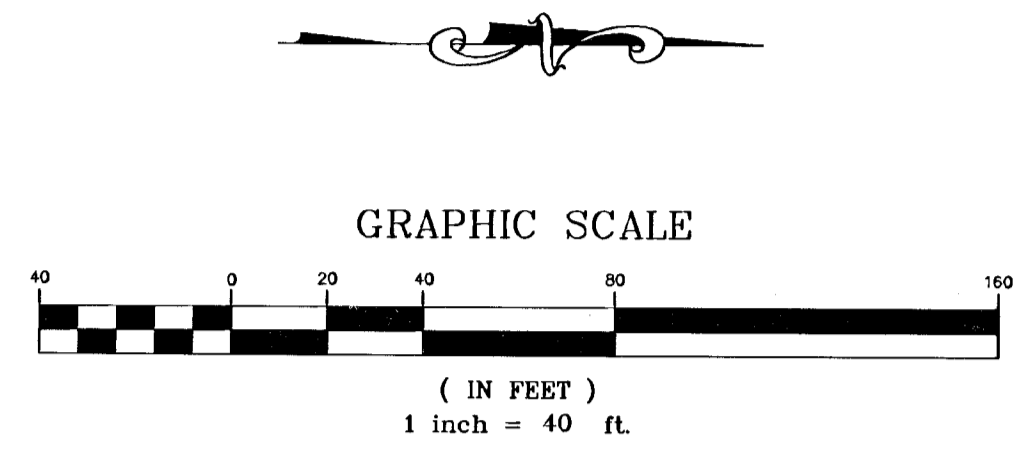
BM#2 " cut on the SW corner of the N. Headwall at the east end of pond on the W. side of Greenwich Rd., approx. 1000' S. of Harry St. Elev. = 1341.87 USGS



Smithmoor 10th Addition  
Sanitary Sewer Line 2  
Wichita, Kansas

PROJECT NUMBER 468 83281			
KEM NO. 01024	FILE SSPP3	DATE 6/01	SHEET 5
DESIGN RR	DRAWN TR	REVISED	OF 9

kemiller engineering  
518 S. Market, Wichita, KS 67202      316/264-0242

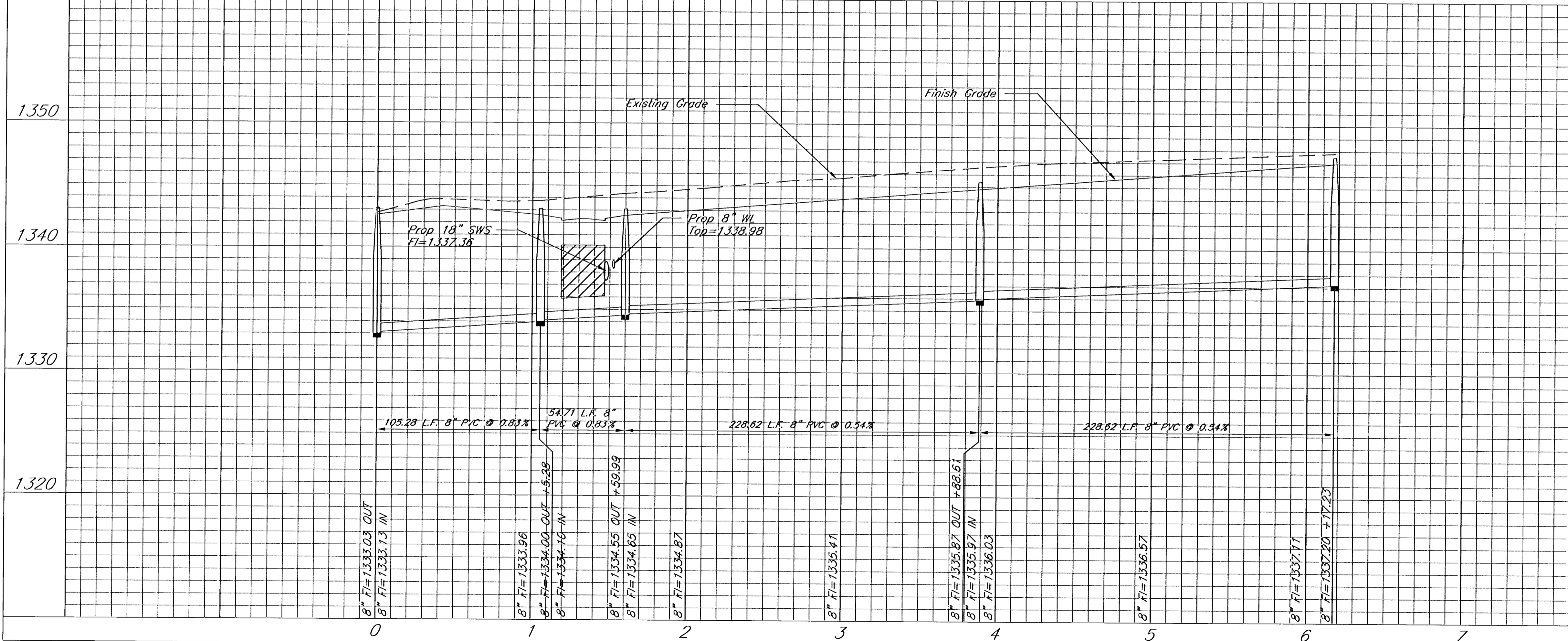
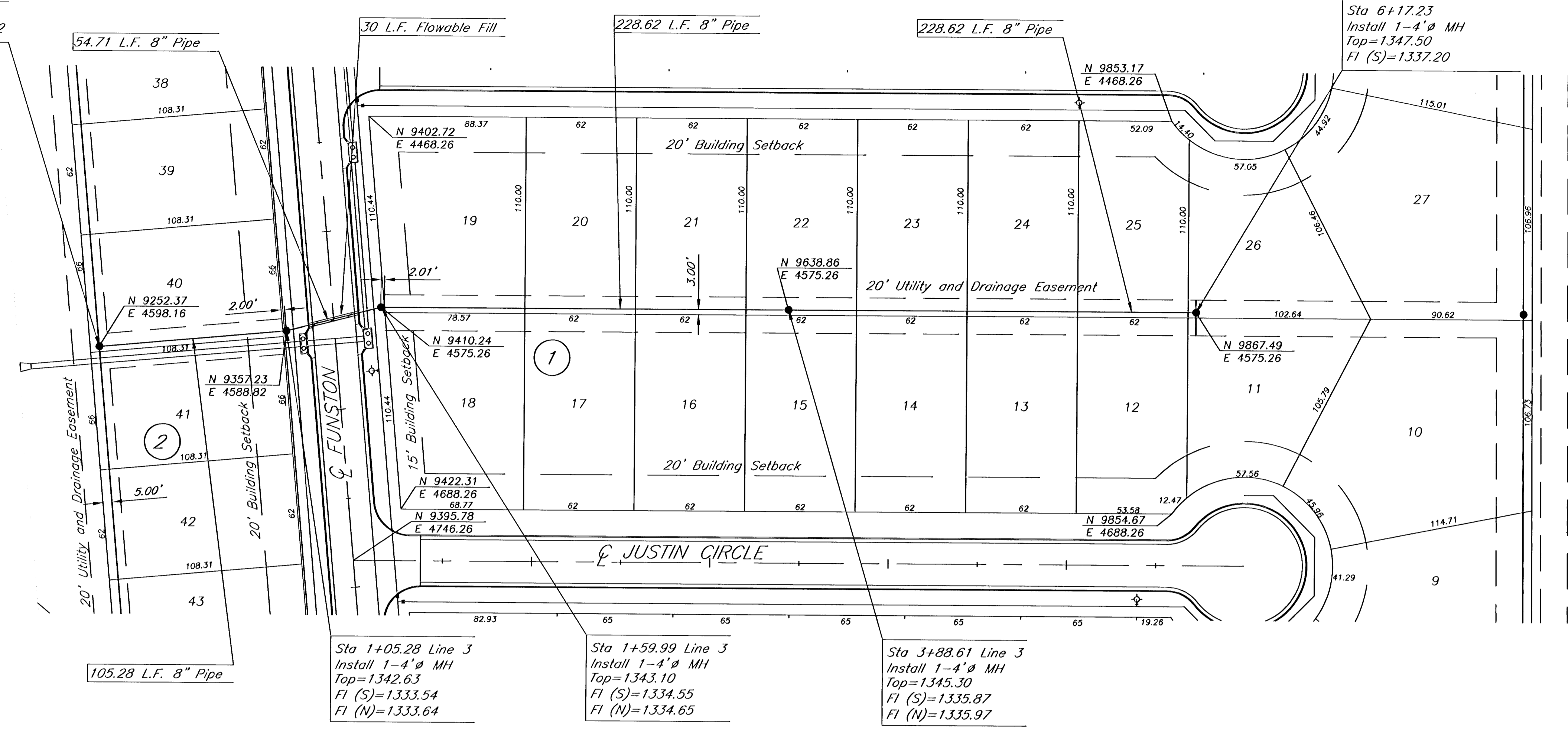


**BENCHMARKS:**

BM#1 City disc on the SW corner traffic signal base on the NE corner of the intersection of Harry St. and Greenwich Rd. Elev. = 1343.49 USGS

BM#2 " " cut on the SW corner of the N. Headwall at the east end of pond on the W. side of Greenwich Rd., approx. 1000' S. of Harry St. Elev. = 1341.87 USGS

Sta 0+00 Line 3=  
Sta 2+64.42 Line 2



Smithmoor 10th Addition  
**Sanitary Sewer Line 3**  
Wichita, Kansas

PROJECT NUMBER  
468 83281

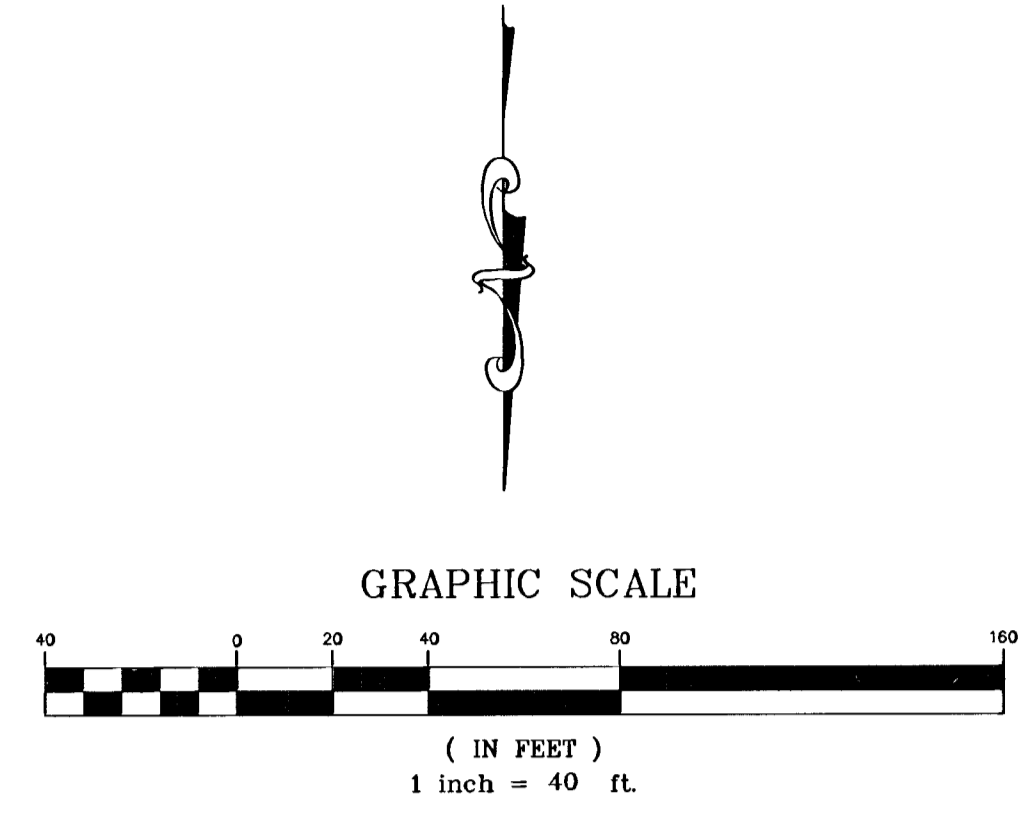
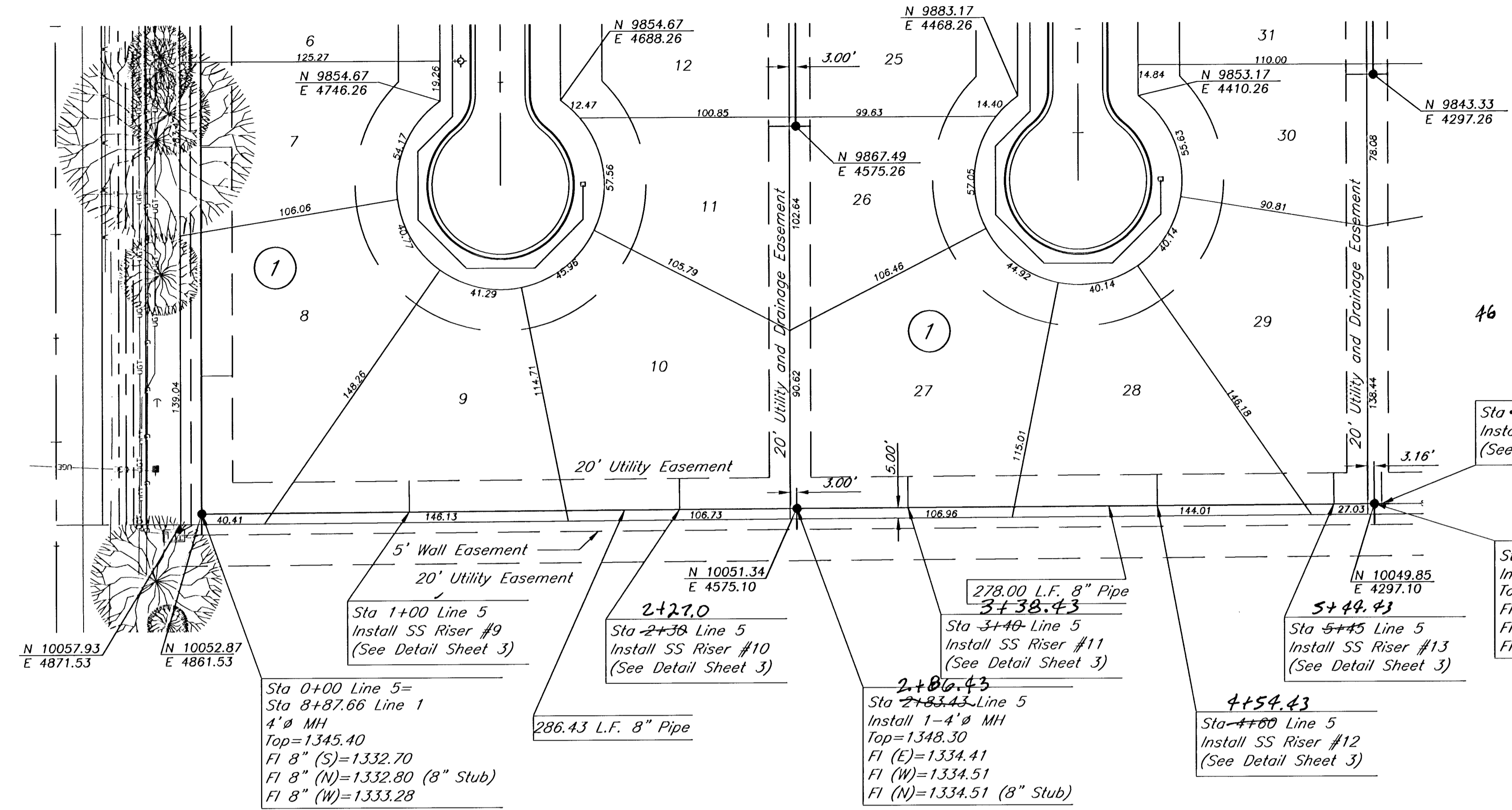
**kemiller**  
engineering

KEM NO. 01024	FILE SSPP5	DATE 6/01	SHEET 6
DESIGN RR	DRAWN TR	REVISED	OF 9

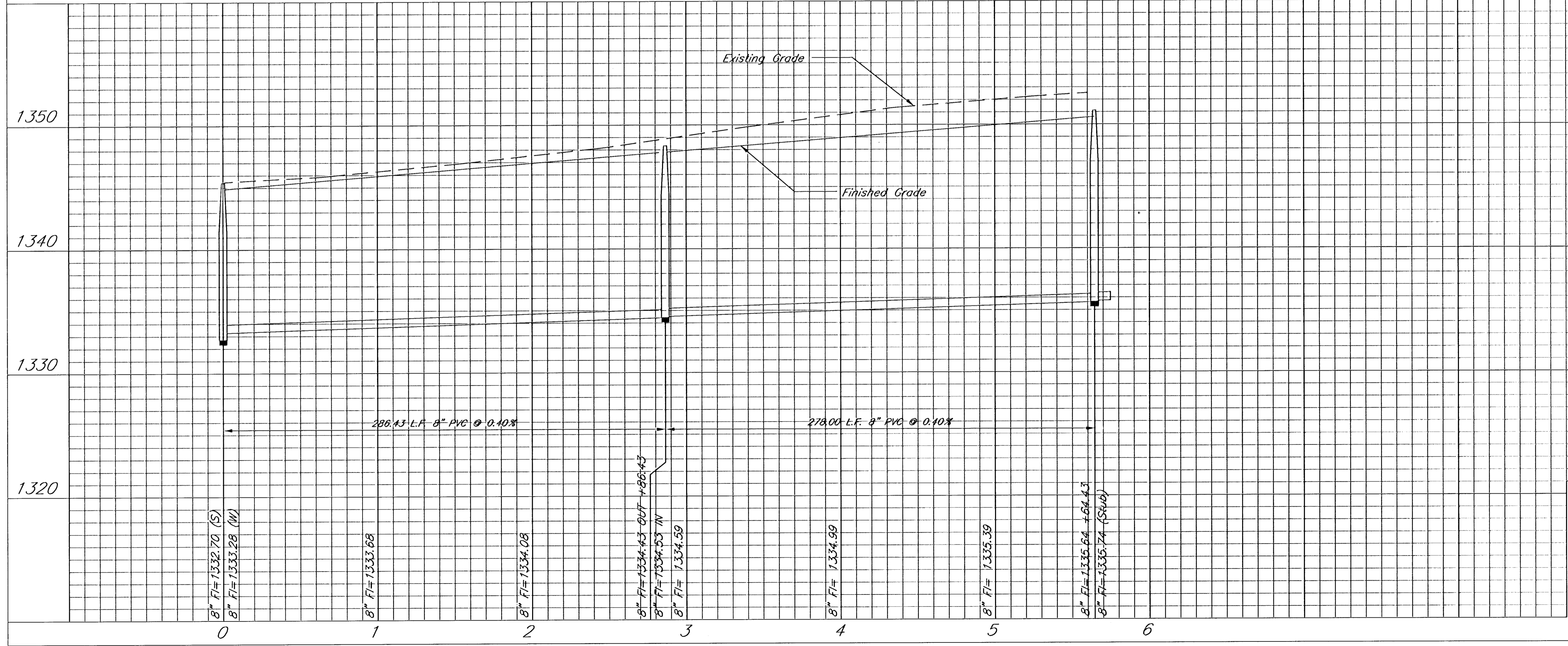
516 S. Market,  
Wichita, KS 67202

316/264-0242





**BENCHMARKS:**  
 BM#1 City disc on the SW corner of the traffic signal base on the NE corner of the intersection of Harry St. and Greenwich Rd. Elev. = 1343.49 USGS  
 BM#2 "□" cut on the SW corner of the N. Headwall at the east end of pond on the W. side of Greenwich Rd., approx. 1000' S. of Harry St. Elev. = 1341.87 USGS



Smithmoor 10th Addition  
**Sanitary Sewer Line 5**  
 Wichita, Kansas

**kemiller engineering**

PROJECT NUMBER 468 83281			
KEM NO. 01024	FILE SSPP2	DATE 8/01	SHEET 8
DESIGN RR	DRAWN TR	REVISED Rev	OF 9

516 S. Market, Wichita, KS 67202 316/264-0242

HARRY

NE Cor. NE 1/4  
Sec. 33-27S-2E

# SMITHMOOR 10TH ADDITION

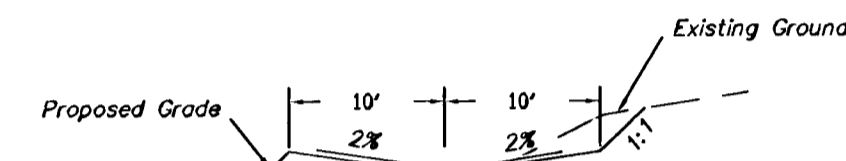
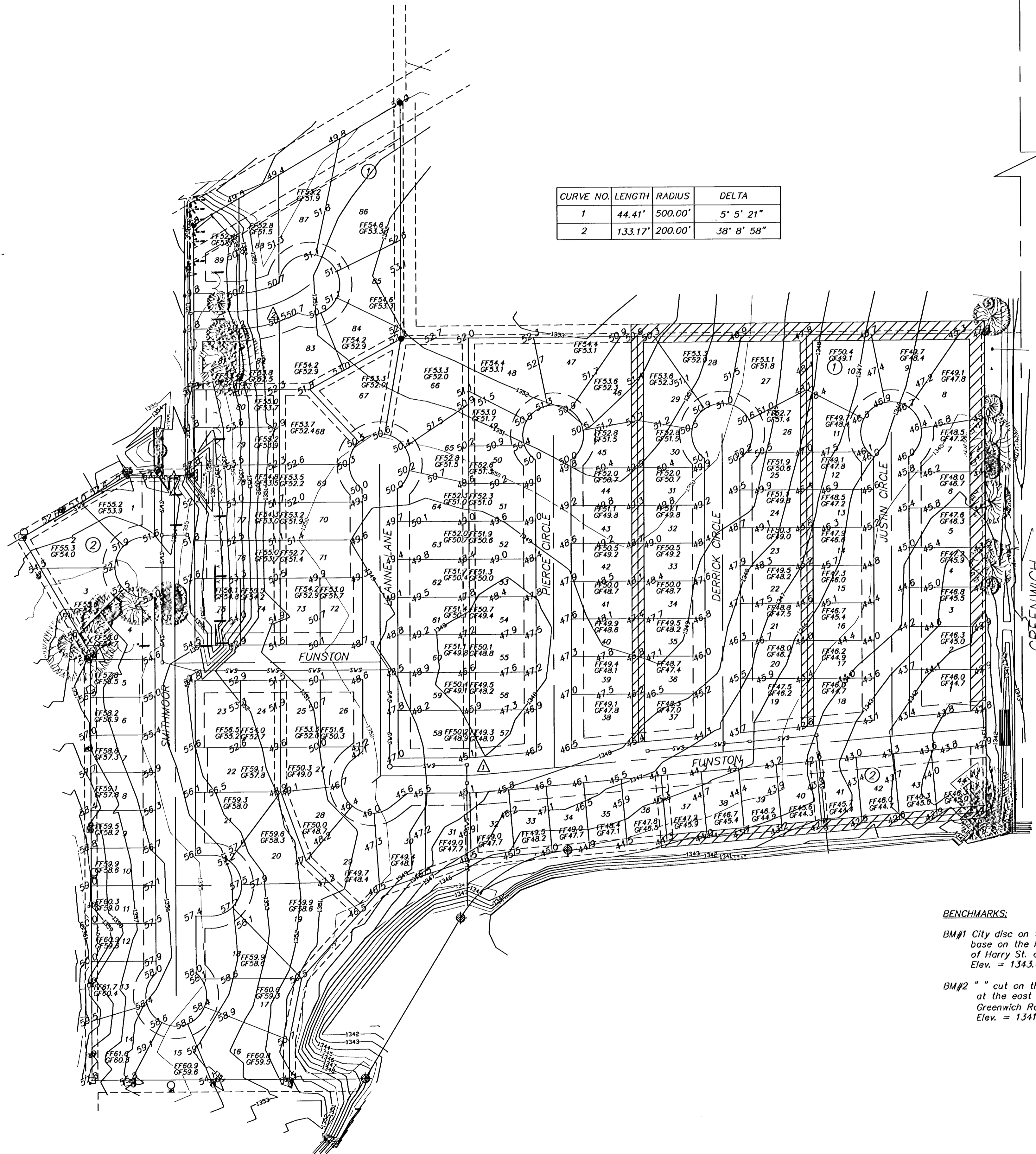
## EASEMENT GRADING PLAN



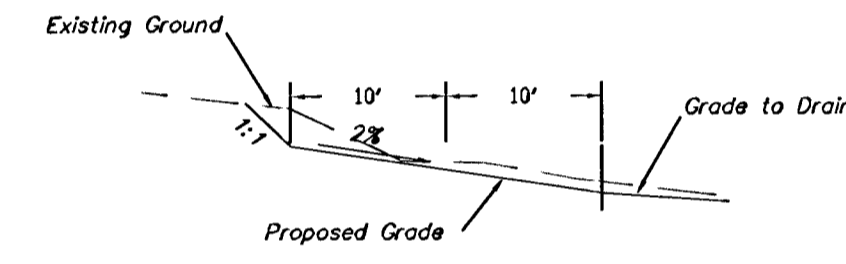
SCALE



CURVE NO.	LENGTH	RADIUS	DELTA
1	44.41'	500.00'	5' 5" 21"
2	133.17'	200.00'	38' 8" 58"



Typical Section

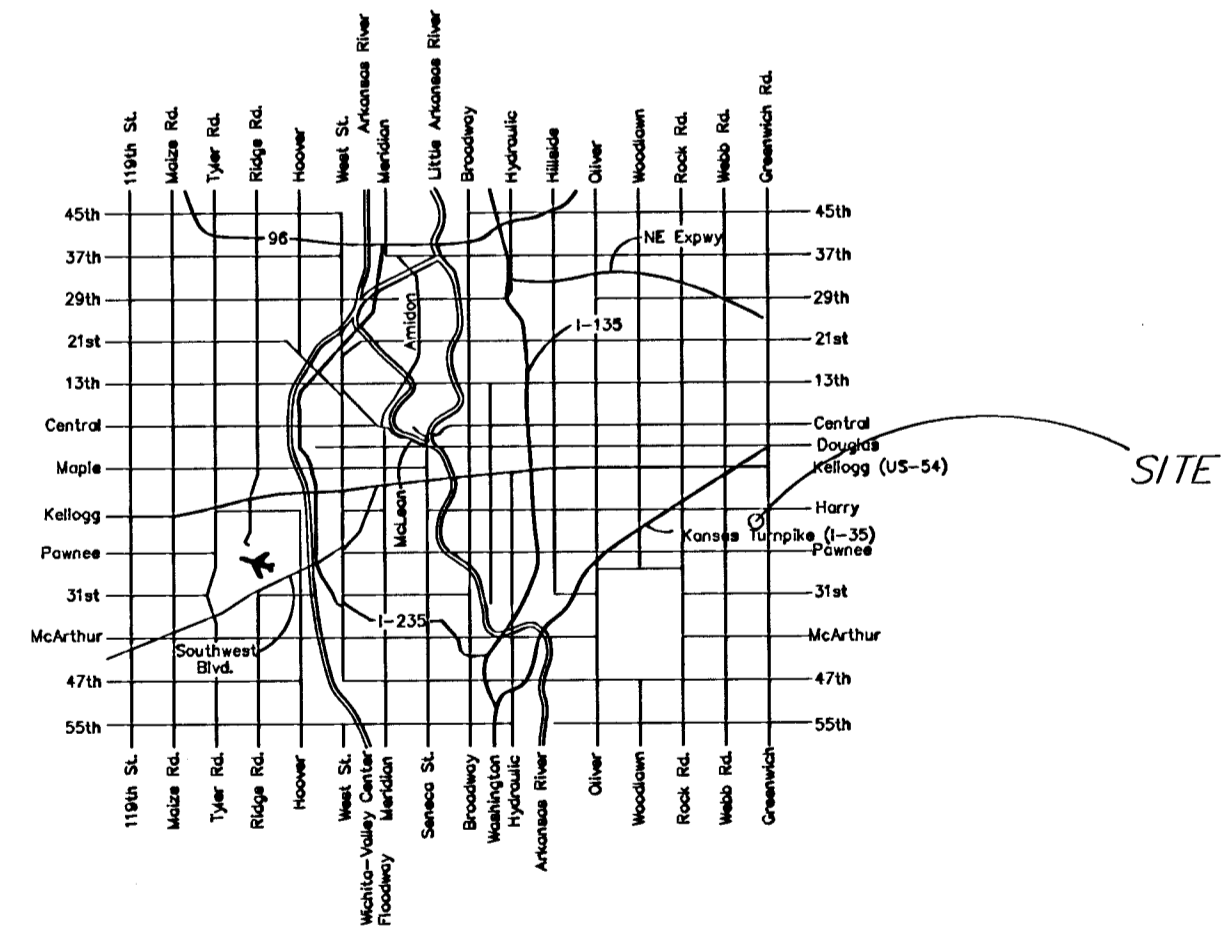


Typical Section South Line

Excavation	2475 CY
Compaction	355 CY

For Information Only

- LEGEND**
- Manhole
  - Sign
  - Telephone Pedestal
  - Cable TV Pedestal
  - Tree
  - ▲ Power Pole
  - ▲ Guy Wire
  - ▲ Fire Hydrant
  - Waterline
  - UGE Underground Electric
  - OHE Overhead Electric
  - Gas Line
  - CATV Underground Cable TV
  - 5/8" Rebar (found) AMPA
  - 5/8" Rebar (found) MEPA
  - 40d Nail (found)
  - 5/8" Rebar (set) B.WARD
  - FF Finished Floor
  - GF Garage Floor
  - ▲ Proposed Grade



LOCATION MAP

**BENCHMARKS:**

BM#1 City disc on the SW corner traffic signal base on the NE corner of the intersection of Harry St. and Greenwich Rd. Elev. = 1343.49 USGS

BM#2 " " cut on the SW corner of the N. Headwall at the east end of pond on the W. side of Greenwich Rd., approx. 1000' S. of Harry St. Elev. = 1341.87 USGS

Smithmoor 10th Addition <b>Easment Grading Plan</b> Wichita, Kansas			
PROJECT NUMBER			
<b>kemiller</b> <i>engineering</i>	HEM NO. 01024	FILE esmtgrad	DATE 6/01
	DESIGN KM	DRAWN TR	REVISED OF 9
516 S. Market, Wichita, KS 67202		316/284-0242	