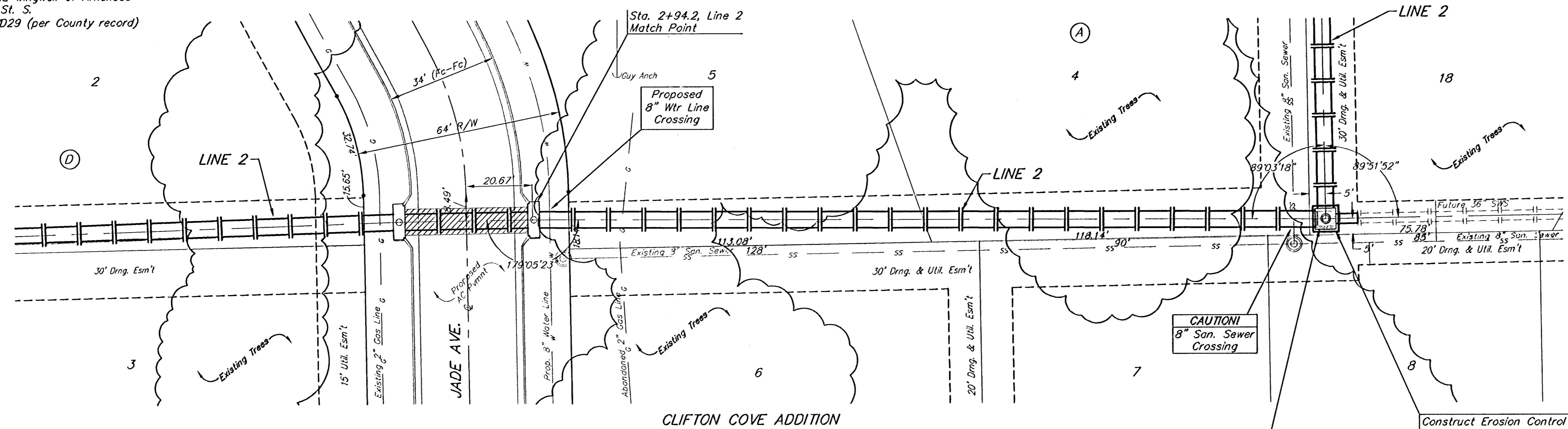


BENCHMARK:
Arkansas River bridge & 63rd St. S. City of
Wichita Benchmark Disc. SW Cor. of bridge,
top of hubguard. 500'± E. of Grove.
Elev. = 1269.95 NGVD29 (per City record)

Brass plate on the NE wingwall of Arkansas
River bridge & 63rd St. S.
Elev. = 1267.48 NGVD29 (per County record)

CLIFTON COVE ADDITION

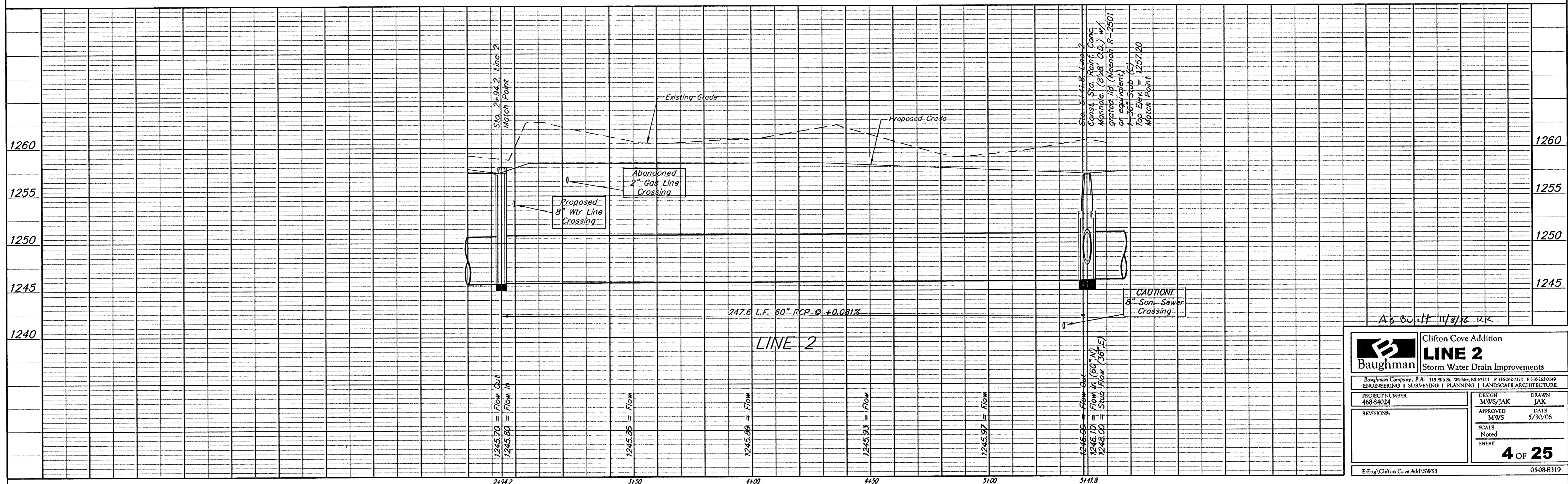


SCALE:
1" = 20' HORIZONTAL
1" = 5' VERTICAL
• = IRON

Remove Existing Trees Only as **ABSOLUTELY**
Necessary For Construction. Trees Not in
Direct Conflict With Proposed New
Construction Shall Remain And Be Protected
From Damage. Cost to be Included in Bid
Item "Site Clearing & Restoration"

Sta. 5+41.8, Line 2
Const. Std. Reinf. Conc.
Manhole. (8'x8' O.D.) w/
grated lid (Neenah R-2501
or equivalent)
1-36" Stub (E)
Top Elev. = 1257.20
Match Point

Construct Erosion Control
Straw Bale Barrier Around
Inlet. See Detail, Sheet 28.



As Built 11/8/12 UK

		Clifton Cove Addition LINE 2 Storm Water Drain Improvements	
Baughman Company, P.A. 315 Bill St. Wichita, KS 67211 P:316-261-1111 F:316-261-0149 ENGINEERING SURVEYING PLANNING LANDSCAPE ARCHITECTURE			
PROJECT NUMBER 468-84024	DESIGN MWS/JAK	DRAWN JAK	
REVISIONS:	APPROVED MWS	DATE 5/30/06	
SCALE Noted		SHEET 4 OF 25	
E:\Eng\Clifton Cove Add\SW3		0508319	