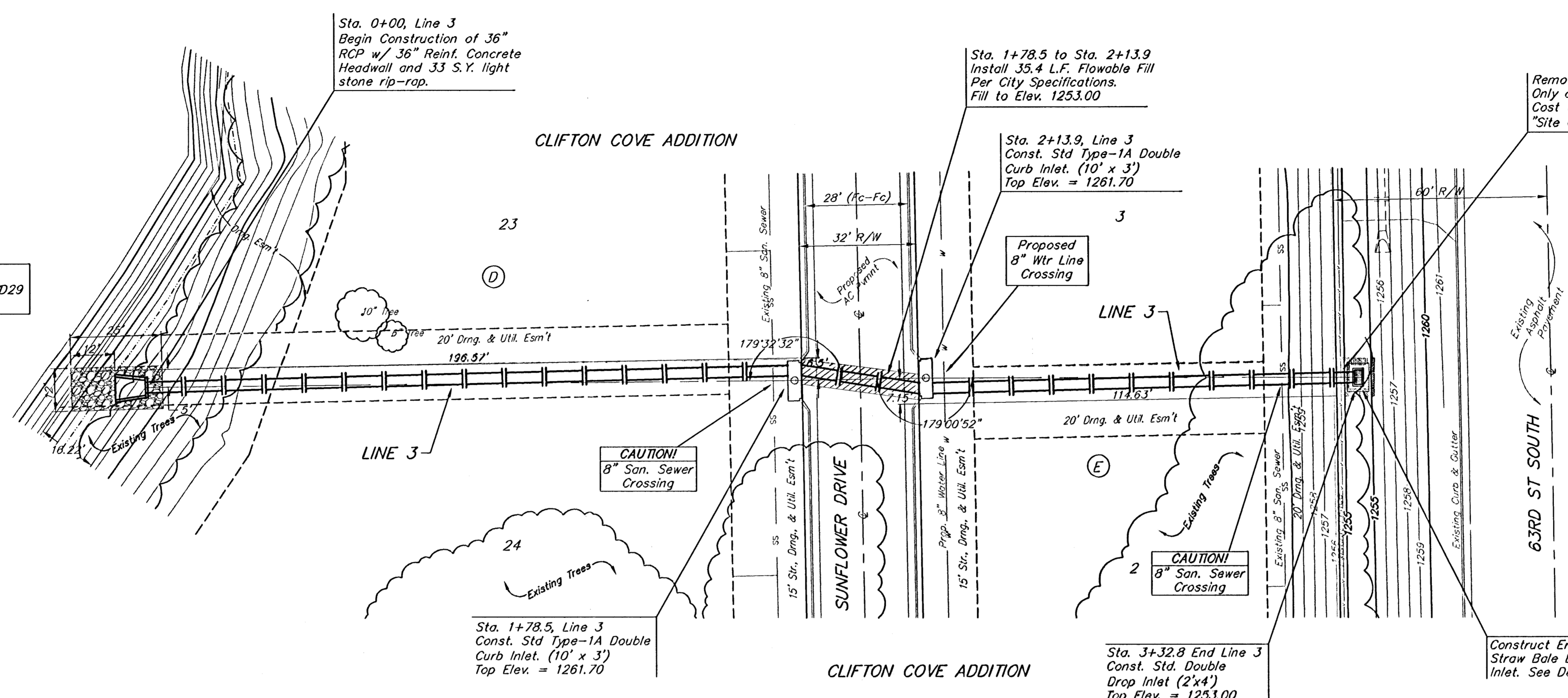


BENCHMARK:
 Arkansas River bridge & 63rd St. S. City of
 Wichita Benchmark Disc. SW Cor. of bridge,
 top of hubguard. 500'± E. of Grove.
 Elev. = 1269.95 NGVD29 (per City record)

Brass plate on the NE wingwall of Arkansas
 River bridge & 63rd St. S.
 Elev. = 1267.48 NGVD29 (per County record)

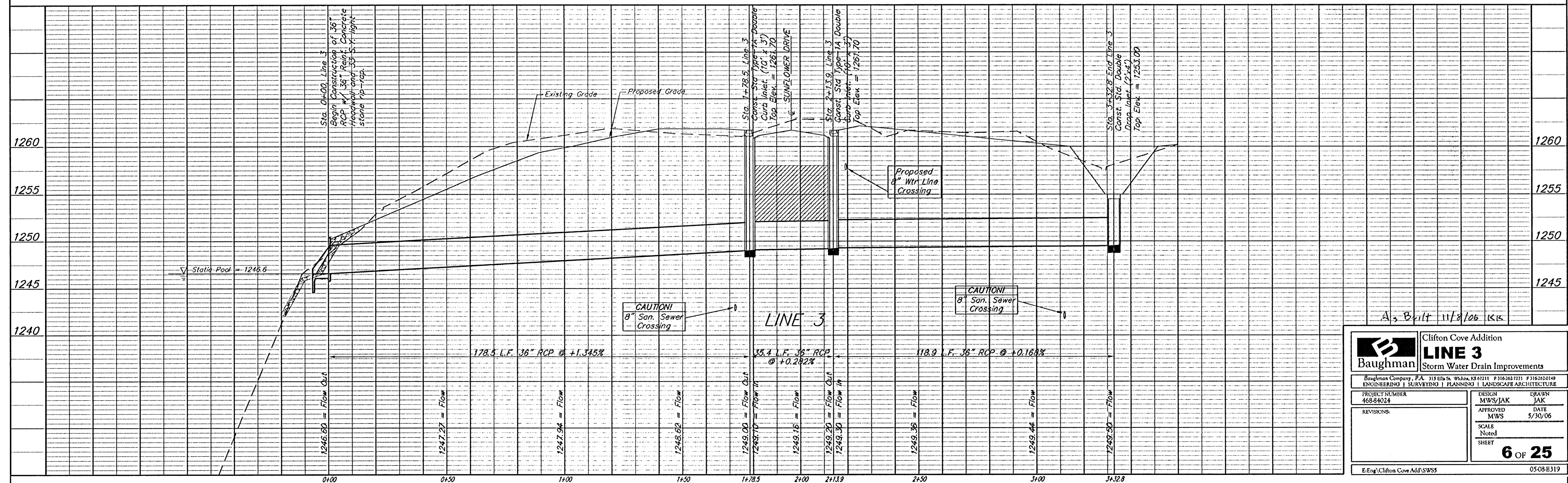
SCALE:
 1" = 20' HORIZONTAL
 1" = 5' VERTICAL
 • = IRON

POND DATA:
 STATIC POOL ELEVATION: 1246.6 NGVD29
 100 YEAR DWS: 1256.0 NGVD29



Remove Existing Trees Only as **ABSOLUTELY**
 Necessary For Construction. Trees Not in
 Direct Conflict With Proposed New
 Construction Shall Remain And Be Protected
 From Damage. Cost to be Included in Bid
 Item "Site Clearing & Restoration"

Construct Erosion Control
 Straw Bale Barrier Around
 Inlet. See Detail, Sheet 28.



A3 Built 11/8/06 KJK

| | | | |
|--------------------------------|-------------------|---|-----------------|
| | | Clifton Cove Addition | |
| | | LINE 3 | |
| Storm Water Drain Improvements | | Baughman Company, P.A. 315 Ellis St. Wichita, KS 67211 P 316-262-7271 F 316-262-0149 ENGINEERING SURVEYING PLANNING LANDSCAPE ARCHITECTURE | |
| PROJECT NUMBER 468-84024 | DESIGN MWS/JAK | DRAWN JAK | DATE 5/30/06 |
| REVISIONS: | APPROVED MWS | SCALE Noted SHEET | |
| | | 6 OF 25 | |
| E:\Eng\Clifton Cove Add\SWSS | | 05-08-B319 | |