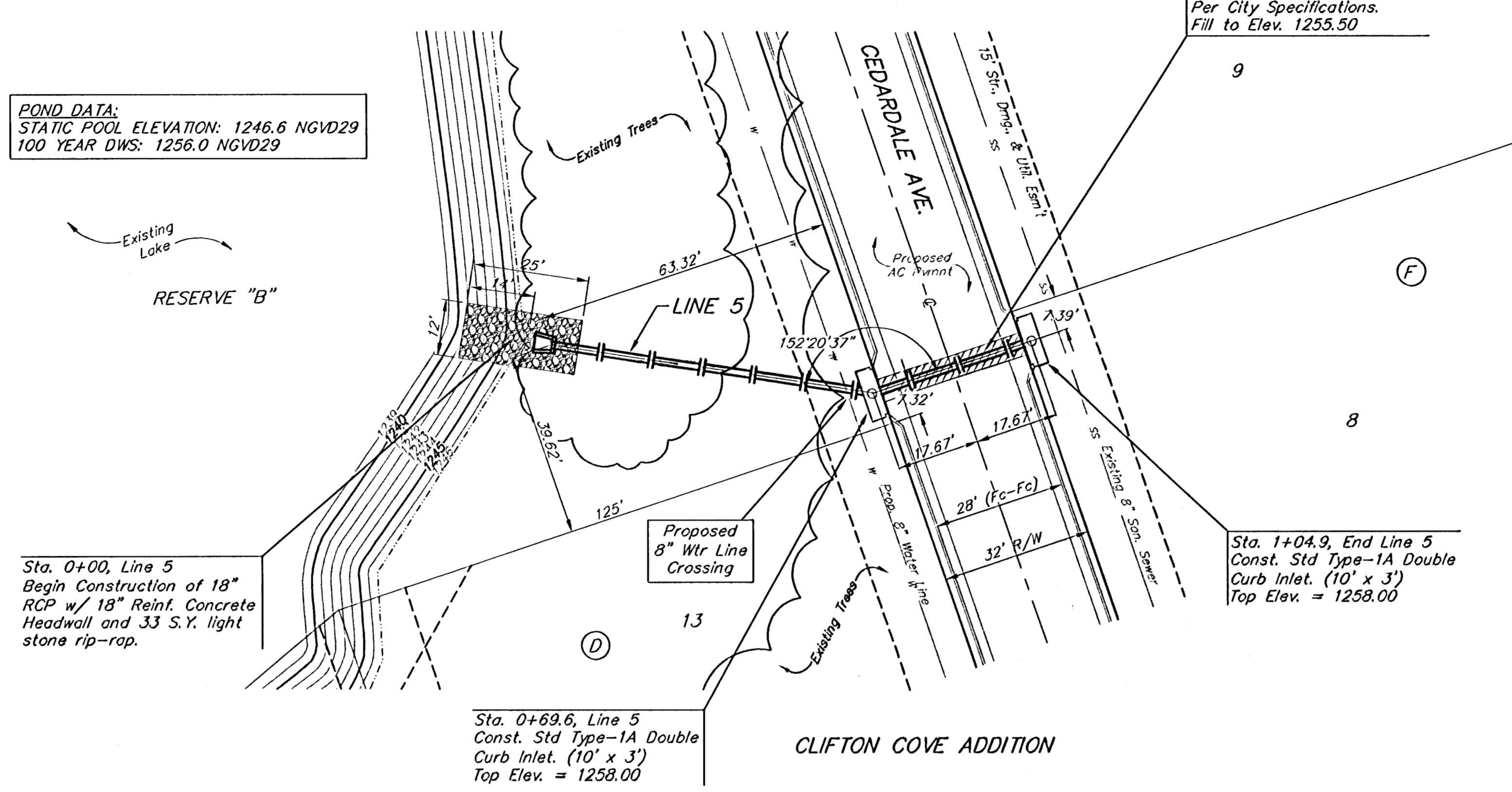


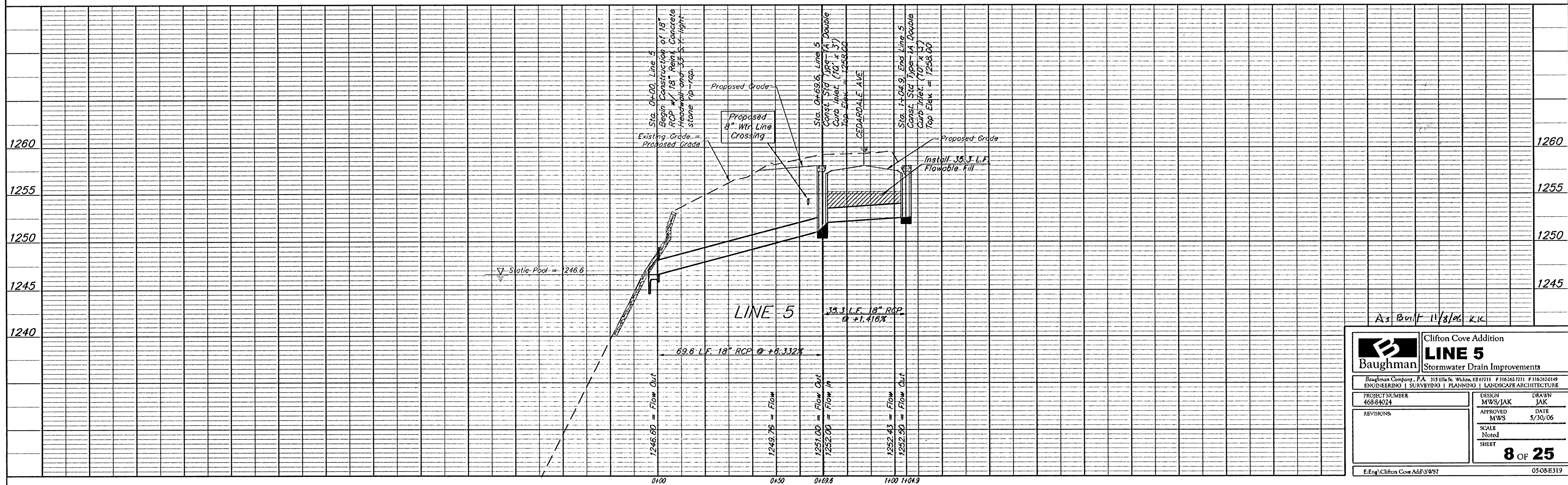
BENCHMARK:
 Arkansas River bridge & 63rd St. S. City of
 Wichita Benchmark Disc. SW Cor. of bridge,
 top of hubguard, 500'± E. of Grove.
 Elev. = 1269.95 NGVD29 (per City record)
 Brass plate on the NE wingwall of Arkansas
 River bridge & 63rd St. S.
 Elev. = 1267.48 NGVD29 (per County record)

POND DATA:
 STATIC POOL ELEVATION: 1246.6 NGVD29
 100 YEAR DWS: 1256.0 NGVD29

CLIFTON COVE ADDITION



Remove Existing Trees Only as **ABSOLUTELY**
 Necessary For Construction. Trees Not in
 Direct Conflict With Proposed New
 Construction Shall Remain And Be Protected
 From Damage. Cost to be Included in Bid
 Item "Site Clearing & Restoration"



Baughman		Clifton Cove Addition	
		LINE 5	
		Stormwater Drain Improvements	
Baughman Company, P.A. 315 Ellis St. Wichita, KS 67211 P 316-262-7271 F 316-262-0149 ENGINEERING SURVEYING PLANNING LANDSCAPE ARCHITECTURE			
PROJECT NUMBER 468-84024	DESIGN MWS/JAK	DRAWN JAK	
REVISIONS:	APPROVED MWS	DATE 5/30/06	
	SCALE Noted	SHEET	
		8 OF 25	
E:Eng\Clifton Cove Add\SWST		0508B319	