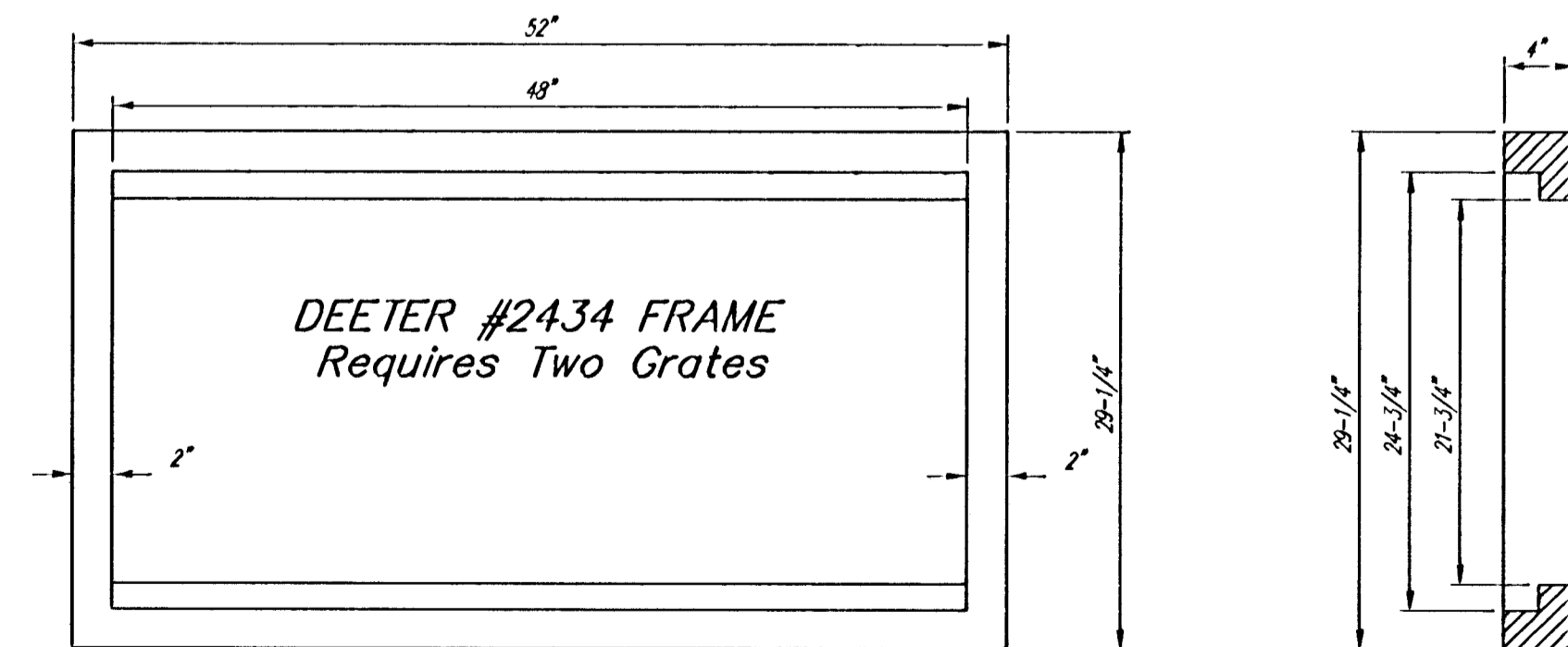


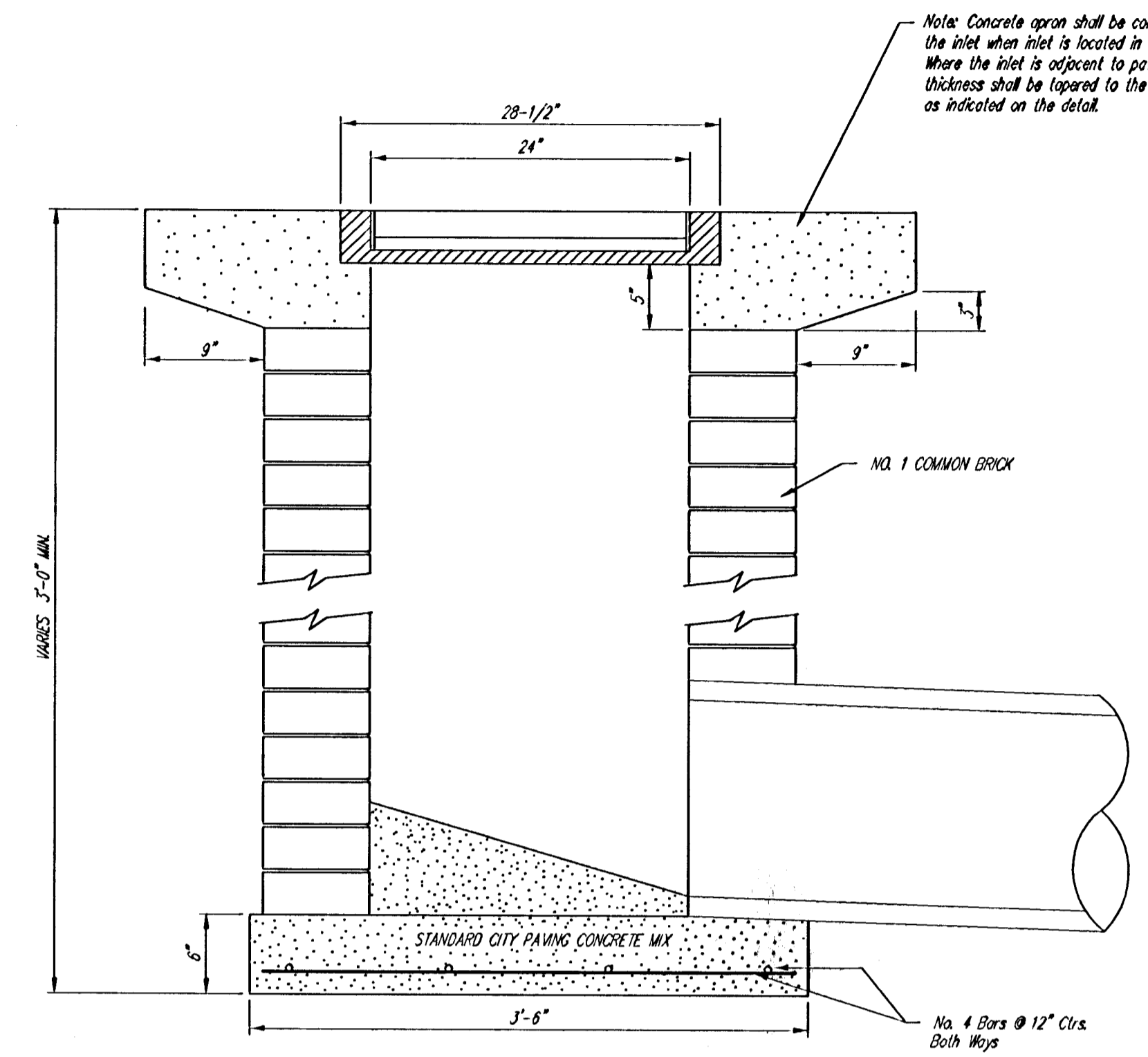
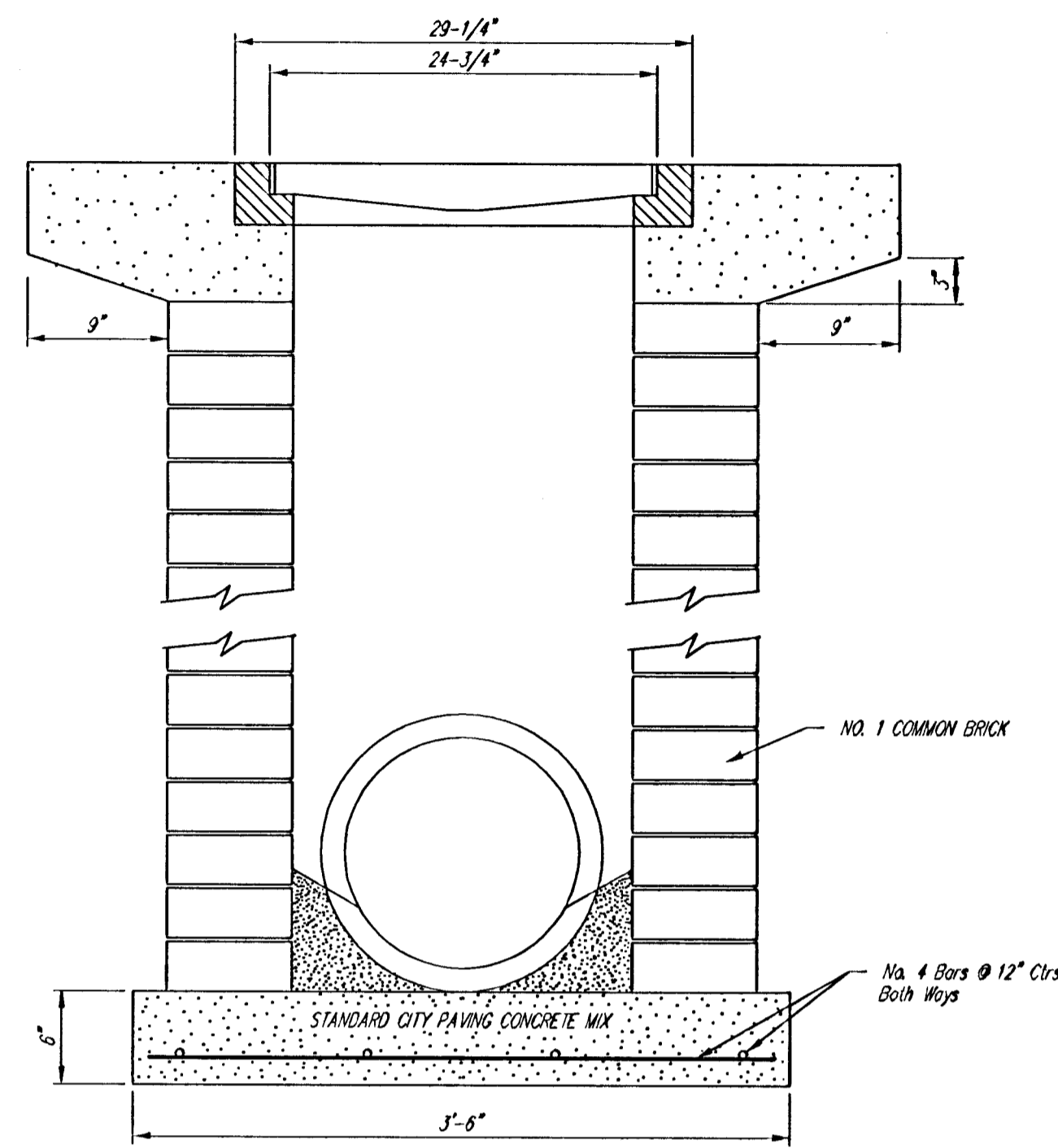
DEETER #2433 GRATE

24" x 24" Frame and Grate Detail

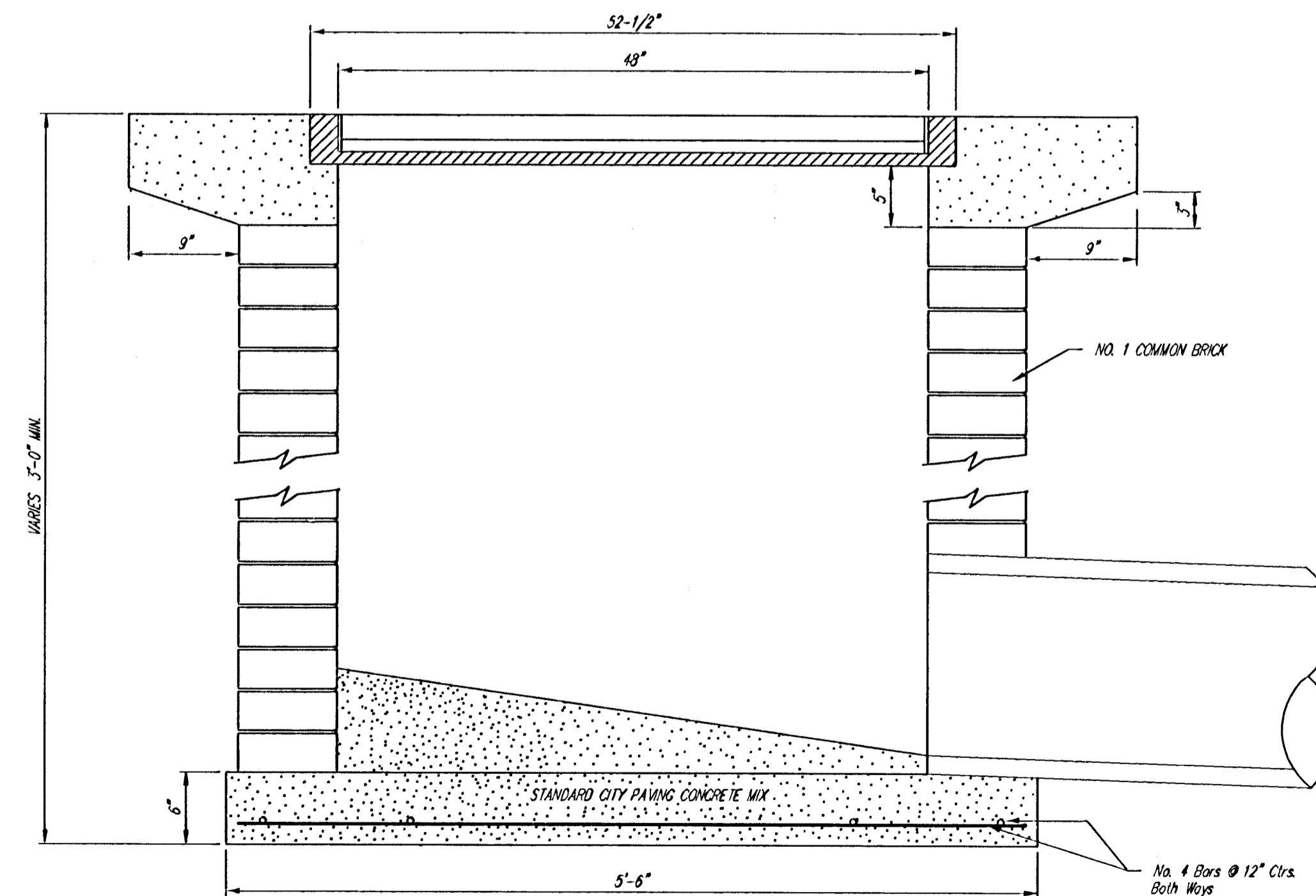
NOTE: Grates shall be imprinted on the top surface with "CITY OF WICHITA" using letters at least 1" in height. Other marking methods may be approved by the engineer.



Double 24" x 24" Frame Detail



Note: Concrete apron shall be constructed around the inlet when inlet is located in an unpaved area. Where the inlet is adjacent to pavement, the pavement thickness shall be tapered to the inlet in 3 inches as indicated on the detail.



	City of Wichita Standard	
	Drop Inlet Detail	
<small>Baughman Company, P.A. 314 E. 15th St., Wichita, KS 67211 P 316.262.7171 F 316.262.0149 ENGINEERING SURVEYING PLANNING LANDSCAPE ARCHITECTURE</small>		
PROJECT NUMBER 468-84024	DESIGN C.O.W.	DRAWN STAFF
REVISIONS	APPROVED	DATE 5/30/06
	SCALE NONE	SHEET
	14 OF 25	
<small>Clifton Cove Add'l DropInlet</small>		