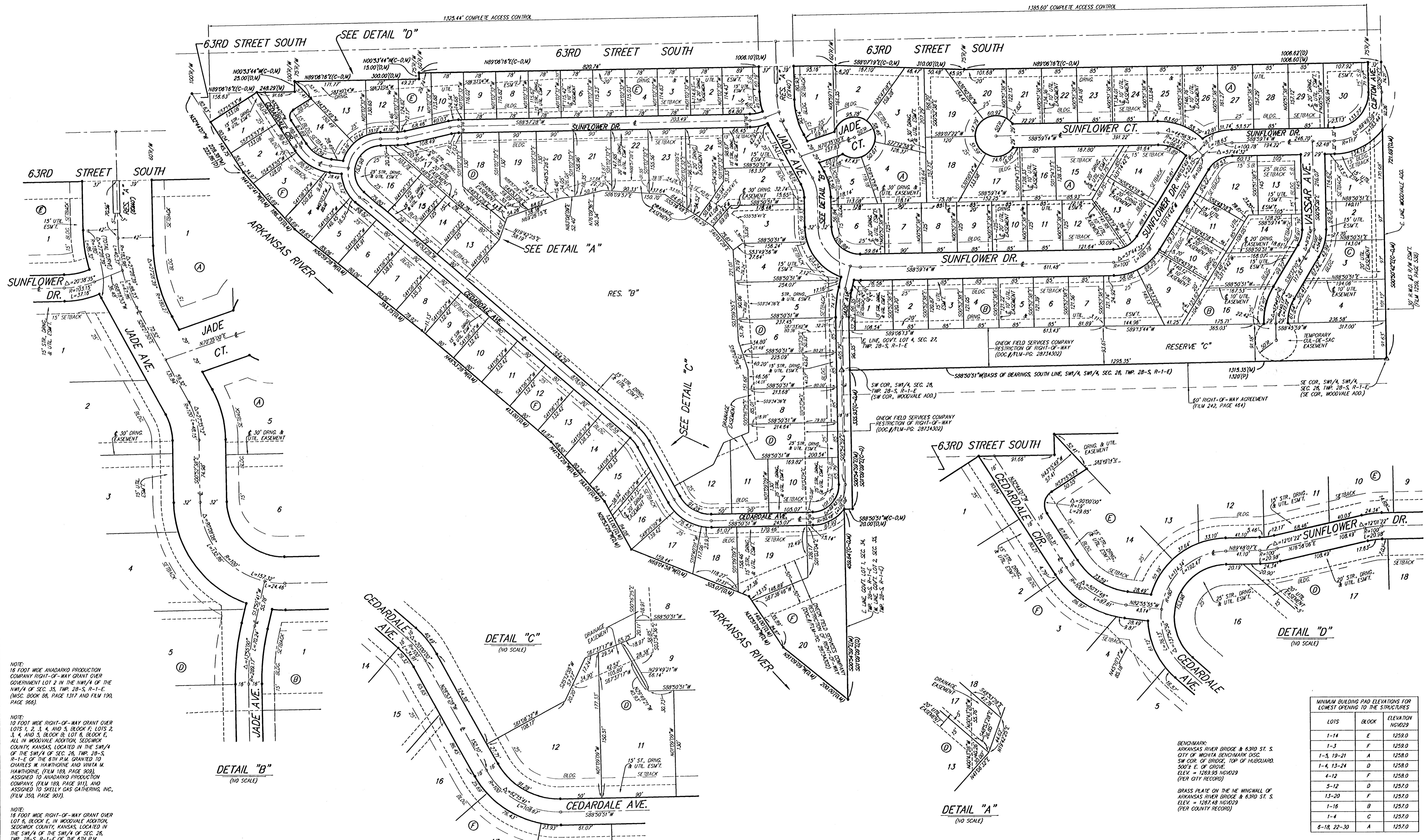


CLIFTON COVE ADDITION

SEDGWICK COUNTY, KANSAS



NOTE:
16 FOOT WIDE ANADARKO PRODUCTION COMPANY RIGHT-OF-WAY GRANT OVER GOVERNMENT LOT 2 IN THE NW1/4 OF THE NW1/4 OF SEC. 35, TWP. 28-S, R-1-E. (MISC. BOOK 86, PAGE 1317 AND FILM 190, PAGE 966).

NOTE:
10 FOOT WIDE RIGHT-OF-WAY GRANT OVER LOTS 1, 2, 3, 4, AND 5, BLOCK F, LOTS 2, 3, 4, AND 5, BLOCK B, LOT 6, BLOCK E, ALL IN WOODVALE ADDITION, SEDGWICK COUNTY, KANSAS, LOCATED IN THE SW1/4 OF THE SW1/4 OF SEC. 26, TWP. 28-S, R-1-E OF THE 6TH P.M. GRANTED TO CHARLES W. HAWTHORNE AND WILMA M. HAWTHORNE. (FILM 189, PAGE 302), ASSIGNED TO ANADARKO PRODUCTION COMPANY, (FILM 189, PAGE 311), AND ASSIGNED TO SKELLY GAS GATHERING, INC. (FILM 353, PAGE 307).

NOTE:
16 FOOT WIDE RIGHT-OF-WAY GRANT OVER LOT 5, BLOCK E, IN WOODVALE ADDITION, SEDGWICK COUNTY, KANSAS, LOCATED IN THE SW1/4 OF THE SW1/4 OF SEC. 26, TWP. 28-S, R-1-E OF THE 6TH P.M. GRANTED TO DONNE E. COOK AND NORMA J. COOK. (MISC. BOOK 86, PAGE 1315, AND FILM 190, PAGE 969), ASSIGNED TO ANADARKO PRODUCTION COMPANY, (MISC. BOOK 95, PAGE 1178, AND FILM 190, PAGE 971), AND ASSIGNED TO SKELLY GAS GATHERING, INC. (FILM 353, PAGE 307).

NOTE:
16 FOOT WIDE GETTY GAS GATHERING RIGHT-OF-WAY GRANT OVER GOVERNMENT LOT 2 IN THE NW1/4 OF THE NW1/4 OF SEC. 35, TWP. 28-S, R-1-E. (FILM 1528, PAGE 1727, AND FILM 1453, PAGE 467).

DETAIL "B"
(NO SCALE)

DETAIL "C"
(NO SCALE)

DETAIL "A"
(NO SCALE)

DETAIL "D"
(NO SCALE)

LOTS	BLOCK	ELEVATION NGVD29
1-14	E	1258.0
1-3	F	1258.0
1-5, 19-21	A	1258.0
1-4, 13-24	D	1258.0
4-12	F	1258.0
5-12	D	1257.0
13-20	F	1257.0
1-16	B	1257.0
1-4	C	1257.0
6-18, 22-30	A	1257.0

BENCHMARK:
ARKANSAS RIVER BRIDGE & 63RD ST. S. CITY OF WICHITA BENCHMARK DISC. SW COR. OF BRIDGE, TOP OF HUBBARD. 500' E. OF GROVE. ELEV. = 1263.95 NGVD29 (PER CITY RECORD)

BRASS PLATE ON THE NE CORNER OF ARKANSAS RIVER BRIDGE & 63RD ST. S. ELEV. = 1267.48 NGVD29 (PER COUNTY RECORD)

NOTE:
A master grading plan for drainage has been developed for this subdivision and is on file with the City of Wichita, Kansas. All drainage easements, right-of-ways, or reserves shall remain of established grades or as modified with the approval of the City Engineer of the City of Wichita, Kansas. No obstructions which impede the flow of this drainage system shall be allowed.

Baughman Company, P.A.
315 Ellis St. Wichita, KS 67211 P 316-262-7171 F 316-262-0149

Baughman ENGINEERING | SURVEYING | PLANNING | LANDSCAPE ARCHITECTURE

F:\PLAT\CLIFTON COVE REVISED DWG\CLIFTON COVE REVISED DWG.MXC