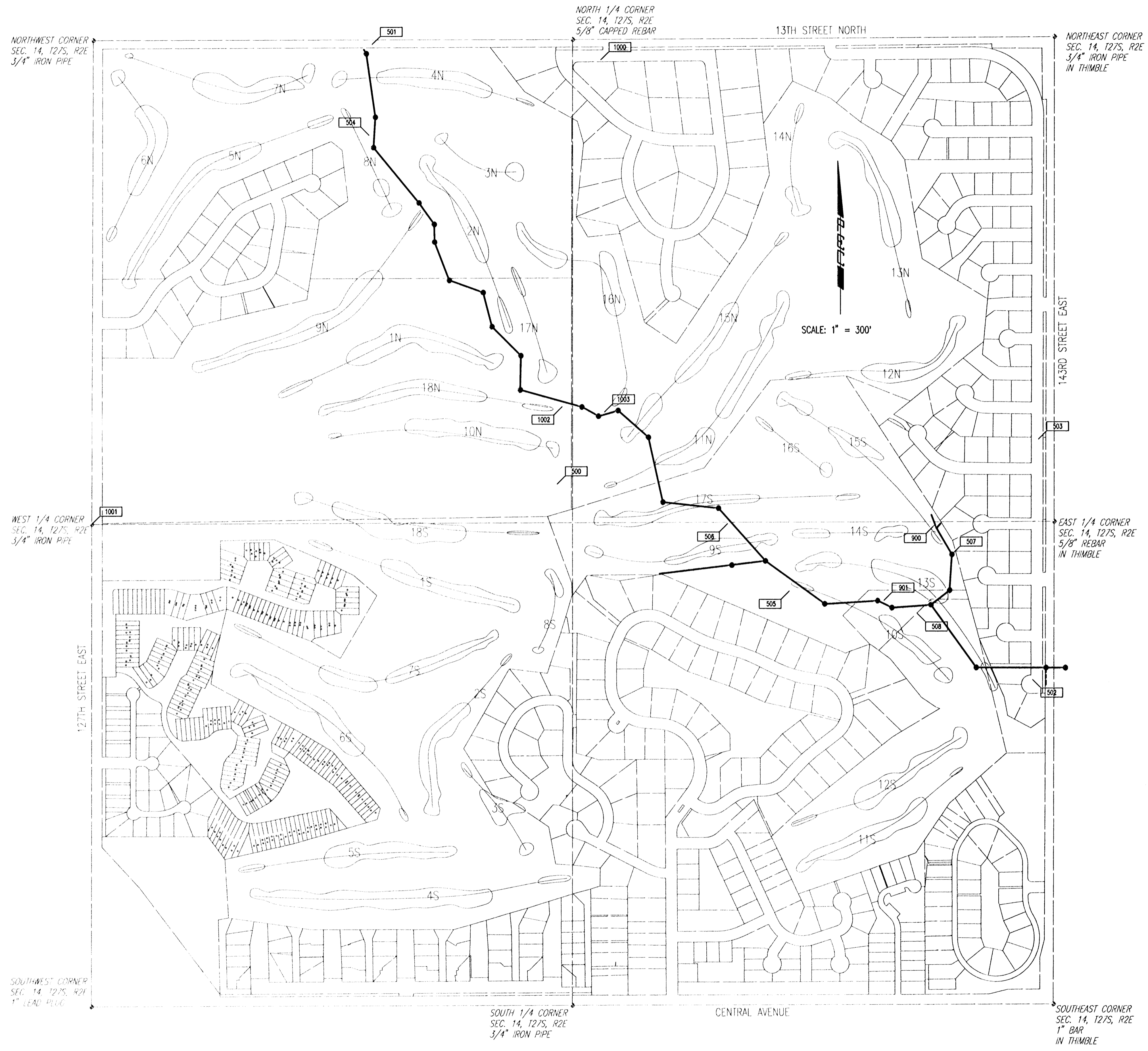


DSNR: OPER: JGA SCALE: 1"=300.00
 01/20/02 09:26:33 \RControl 09-22-2004 05:49:37 pm

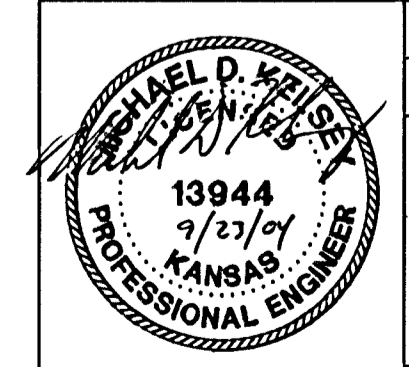


CONTROL POINTS

- Pt#500 1/2" Rebar
 N=52,854.2560 E=47,268.9200
 Elev.=1347.62
 No ties taken
- Pt#501 Conc. Nail
 N=55,268.9958 E=46,250.4922
 Elev.=1338.43
 No ties taken
- Pt#502 Conc. Nail
 N=51,781.1802 E=49,885.2884
 Elev.=1320.66
 No ties taken
- Pt#503 Conc. Nail
 N=53,103.7546 E=49,917.0797
 Elev.=1336.91
 No ties taken
- Pt#504 1/2" Rebar
 N=54,770.0540 E=46,233.0860
 Elev.=1339.69
 No ties taken
- Pt#505 1/2" Rebar
 N=52,267.3200 E=48,546.7800
 Elev.=1326.27
 No ties taken
- Pt#506 1/2" Rebar
 N=52,837.2859 E=48,206.7146
 Elev.=1330.29
 No ties taken
- Pt#507 1/2" Rebar
 N=52,470.4100 E=49,441.6800
 Elev.=1327.89
 No ties taken
- Pt#508 1/2" Rebar
 N=52,143.6500 E=49,251.1800
 Elev.=1320.51
 No ties taken
- Pt#900 Nail
 N=52,629.9729 E=49,344.7881
 Elev.=1329.31
 No ties taken
- Pt#901 Nail
 N=52,216.7708 E=49,067.4573
 Elev.=1320.37
 No ties taken
- Pt#1000 Bench Mark
 N=55,185.4943 E=47,508.1564
 Elev.=1354.63
 No ties taken
- Pt#1001 3/4" Iron Pipe
 N=52,632.1549 E=44,709.6064
 Elev.=1372.53
 No ties taken
- Pt#1002 Rebar
 N=53,278.6159 E=47,295.9973
 Elev.=1336.57
 No ties taken
- Pt#1003 Rebar
 N=53,250.1415 E=47,529.4042
 Elev.=1331.21
 No ties taken

SECTION CORNERS

- N=55,290.1770, E=44,717.0110
 NORTHWEST CORNER SEC. 14, T27S, R2E
 3/4" Iron pipe
- N=55,315.7140, E=50,003.5830
 NORTHEAST CORNER SEC. 14, T27S, R2E
 3/4" Iron pipe in thimble
- N=49,980.5226, E=44,709.2384
 SOUTHWEST CORNER SEC. 14, T27S, R2E
 1" Lead plug
- N=50,000.0000, E=50,000.0000
 SOUTHEAST CORNER SEC. 14, T27S, R2E
 1" Bar in thimble
- N=49,990.0367, E=47,355.2740
 SOUTH 1/4 CORNER SEC. 14, T27S, R2E
 3/4" Iron pipe



No.	Revision	By	Date
MAIN 17, FOUR MILE CREEK CRESTVIEW SEWER - PHASE 1 HORIZONTAL AND VERTICAL CONTROL JAMES L. ARMOUR, P.E. - ACTING CITY ENGINEER CITY OF WICHITA PROJECT NO. 468-83903 Professional Engineering Consultants, P.A. 303 S. TOPEKA • WICHITA, KANSAS 67202 316-262-2691 • FAX 316-262-3003			
Designed by	MDK	Job No.	35-02633-3697
Drawn by	JGA	Date	JULY 2004
			Sht. 3 of 23