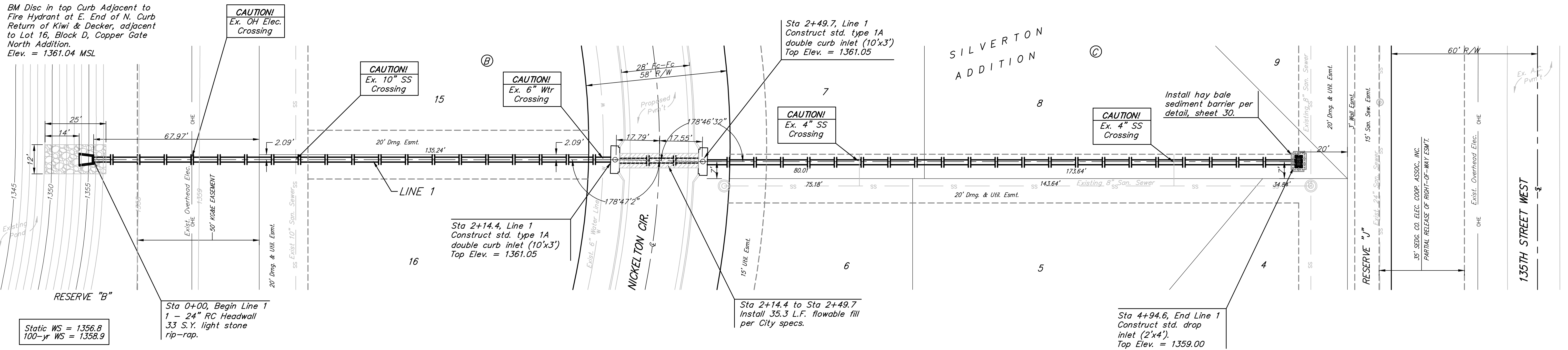


BENCHMARKS:
 135th St. W. & 13th St. N. - City of Wichita Disc at Southwest Corner of Intersection, 30.00'± S. of ϕ of 13th St. N. 35.00'± W. of ϕ of 135th St. W.
 Elev. = 1355.65 MSL

"□" Cut in Top of Curb 10' South of end of Existing Pavement, East Curb adjacent to Lot 12, Block D, Copper Gate North Addition.
 Elev. = 1362.13 MSL

BM Disc in top Curb Adjacent to Fire Hydrant at E. End of N. Curb Return of Kiwi & Decker, adjacent to Lot 16, Block D, Copper Gate North Addition.
 Elev. = 1361.04 MSL

Scale: 1" = 20' Horizontal
 1" = 5' Vertical
 • = Iron



Static WS = 1356.8
 100-yr WS = 1358.9

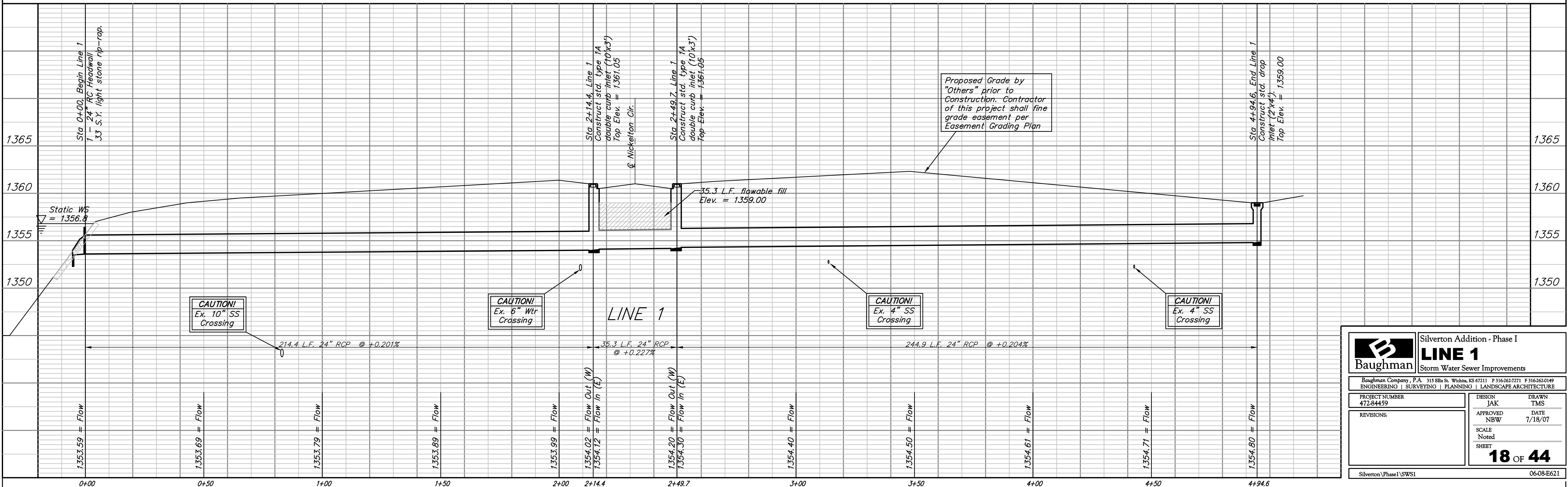
Sta 0+00, Begin Line 1 - 24" RC Headwall, 33 S.Y. light stone rip-rap.

Sta 2+14.4, Line 1 - Construct std. type 1A double curb inlet (10'x3'), Top Elev. = 1361.05

Sta 2+14.4 to Sta 2+49.7 - Install 35.3 L.F. flowable fill per City specs.

Sta 4+94.6, End Line 1 - Construct std. drop inlet (2'x4'), Top Elev. = 1359.00

Proposed Grade by "Others" prior to Construction. Contractor of this project shall fine grade easement per Easement Grading Plan



		Silverton Addition - Phase I LINE 1 Storm Water Sewer Improvements	
		<small>Baughman Company, P.A. 315 Ellis St. Wichita, KS 67211 P 316-262-7271 F 316-262-0149 ENGINEERING SURVEYING PLANNING LANDSCAPE ARCHITECTURE</small>	
PROJECT NUMBER 472-84459	DESIGN JAK	DRAWN TMS	DATE 7/18/07
REVISIONS:	APPROVED NBW	SCALE Noted	SHEET 18 OF 44
Silverton\Phase I\SWSI		06-08-E621	