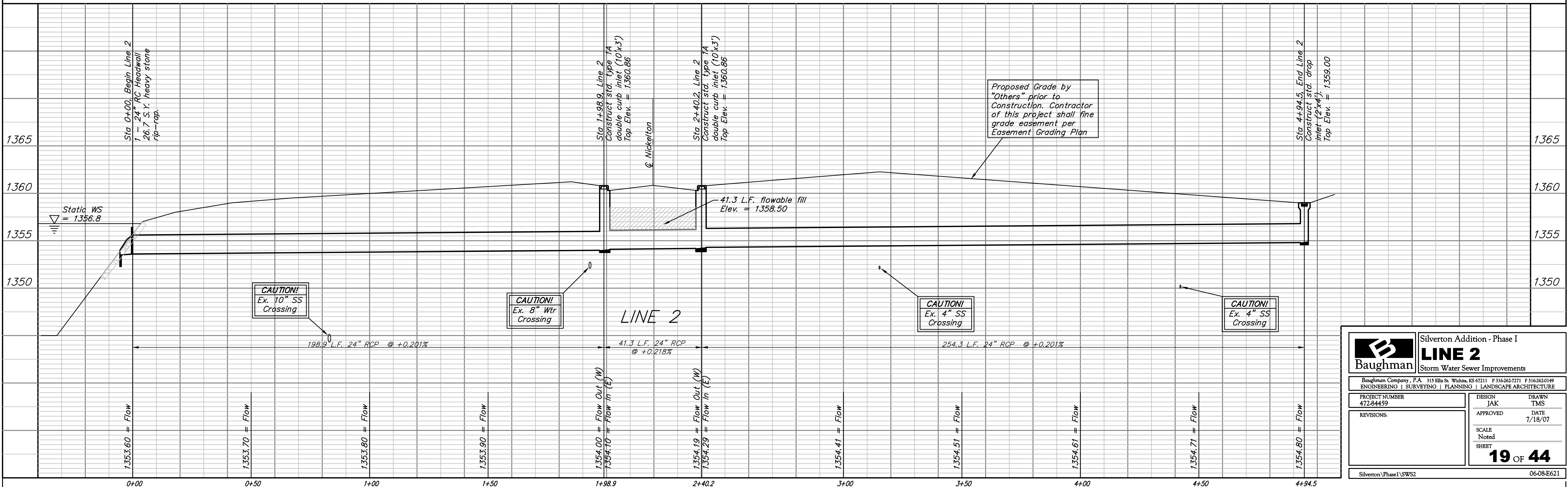
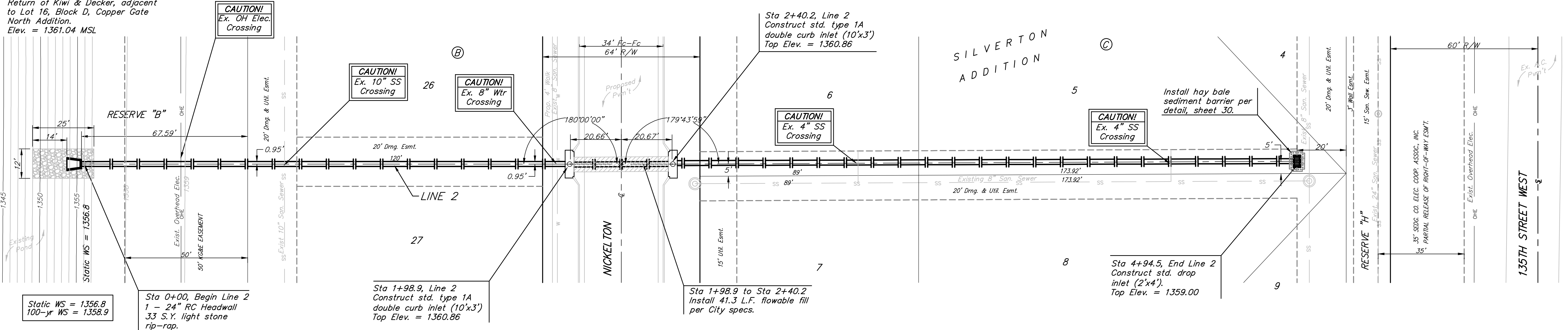


**BENCHMARKS:**  
 135th St. W. & 13th St. N. - City of Wichita Disc at Southwest Corner of Intersection, 30.00± S. of  $\mathcal{C}$  of 13th St. N. 35.00± W. of  $\mathcal{C}$  of 135th St. W.  
 Elev. = 1355.65 MSL

"□" Cut in Top of Curb 10' South of end of Existing Pavement, East Curb adjacent to Lot 12, Block D, Copper Gate North Addition.  
 Elev. = 1362.13 MSL

BM Disc in top Curb Adjacent to Fire Hydrant at E. End of N. Curb Return of Kiwi & Decker, adjacent to Lot 16, Block D, Copper Gate North Addition.  
 Elev. = 1361.04 MSL

Scale: 1" = 20' Horizontal  
 1" = 5' Vertical  
 • = Iron



|  |                |                                |                                 |
|--|----------------|--------------------------------|---------------------------------|
| <b>Baughman</b>  |                | Silverton Addition - Phase I   |                                 |
| <b>LINE 2</b>  |                | Storm Water Sewer Improvements |                                 |
| Baughman Company, P.A. 315 Ellis St. Wichita, KS 67211 P 316-363-7271 F 316-363-0149 |                |                                |                                 |
| ENGINEERING   SURVEYING   PLANNING   LANDSCAPE ARCHITECTURE                          |                |                                |                                 |
| PROJECT NUMBER<br>472-84459  | DESIGN<br>JAK  | DRAWN<br>TMS                   | DATE<br>7/18/07                 |
| REVISIONS:   | SCALE<br>Noted |                                |                                 |
|  |                |                                | SHEET<br><b>19</b> OF <b>44</b> |
| Silverton Phase I SWS2   |                |                                | 06-08-E621                      |