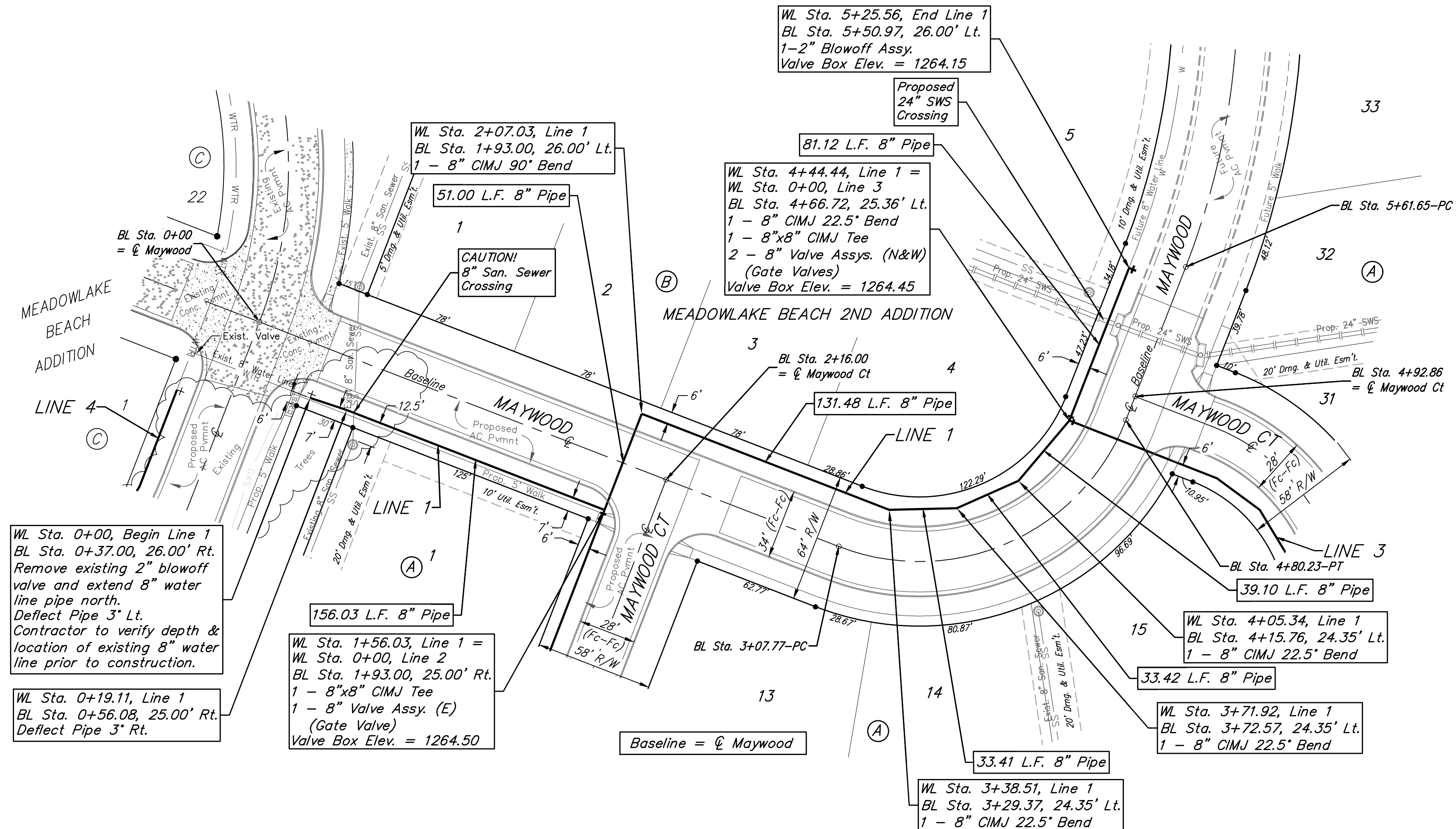


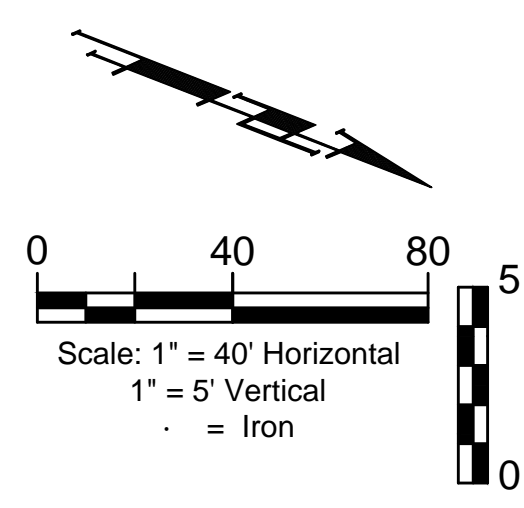
BENCHMARK:

BM #1 - City of Wichita Benchmark Disc, SE Corner of Clifton and 55th Street South, Southwest corner of RCBC, on top of hubguard at the West end.
Elev. = 1263.61 NAVD88

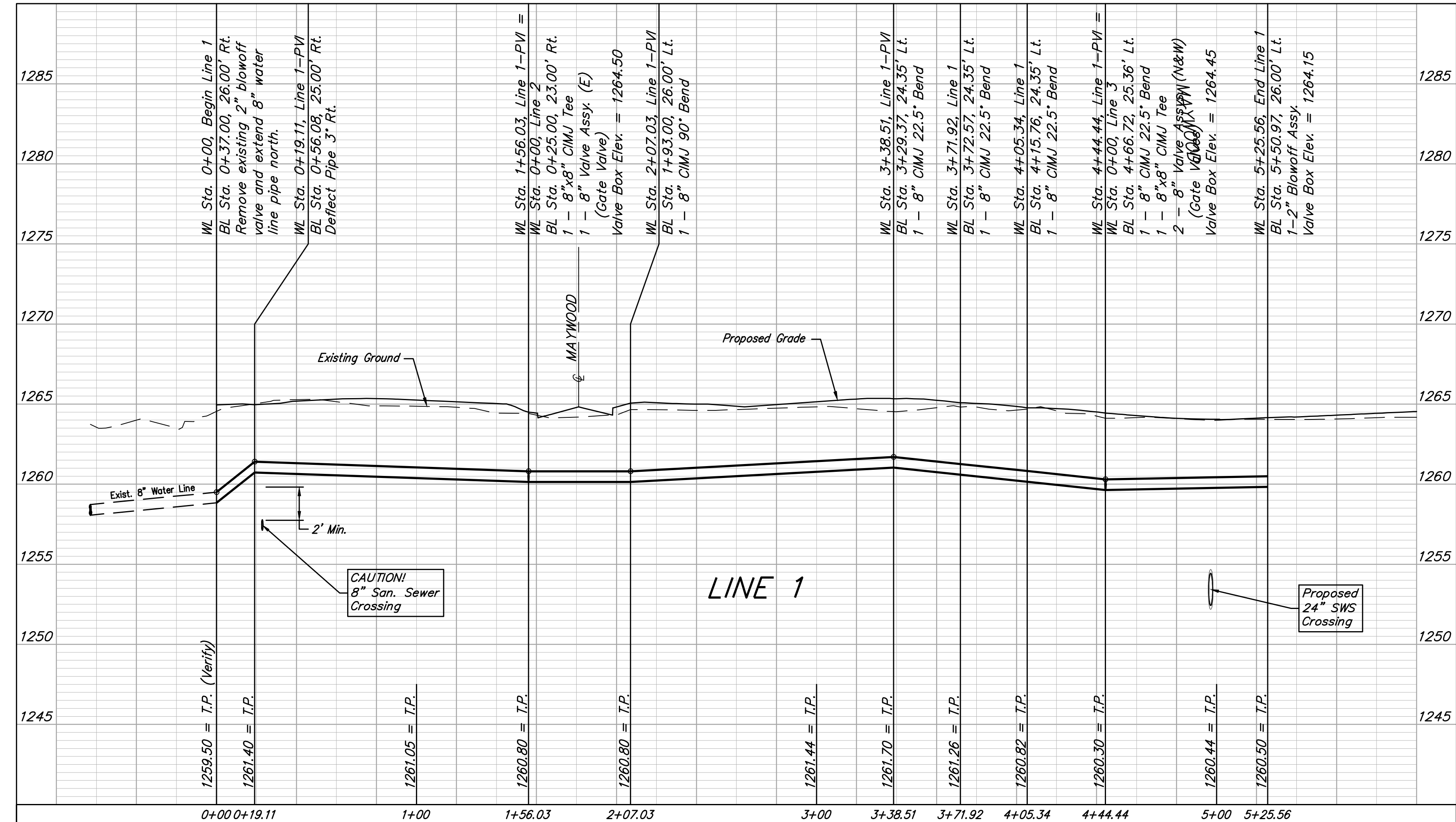
BM #2 - " " Cut on top of curb, north side of Shoffner, adjacent to SE corner of Lot 14 Block B, Meadowlake Beach Addition, Sedgwick County, Kansas.
Elev. = 1264.80 NAVD88



Existing trees shall be removed as necessary for construction. Trees not in direct conflict with proposed new construction shall remain and be protected from damage. Cost to be included in "Site Clearing".



MEADOWLAKE BEACH 2ND ADDITION







BAUGHMAN COMPANY

315 Ellis St.
Wichita, KS 67211
316-262-7271
BaughmanCo.com

MEADOWLAKE BEACH 2ND ADDITION - PHASE I

LINE 1

WATER DISTRIBUTION SYSTEM

PROJECT NUMBER:

DESIGN: DMV DRAWN: JAK
DATE: June 12, 2024

SHEET 4 OF 15