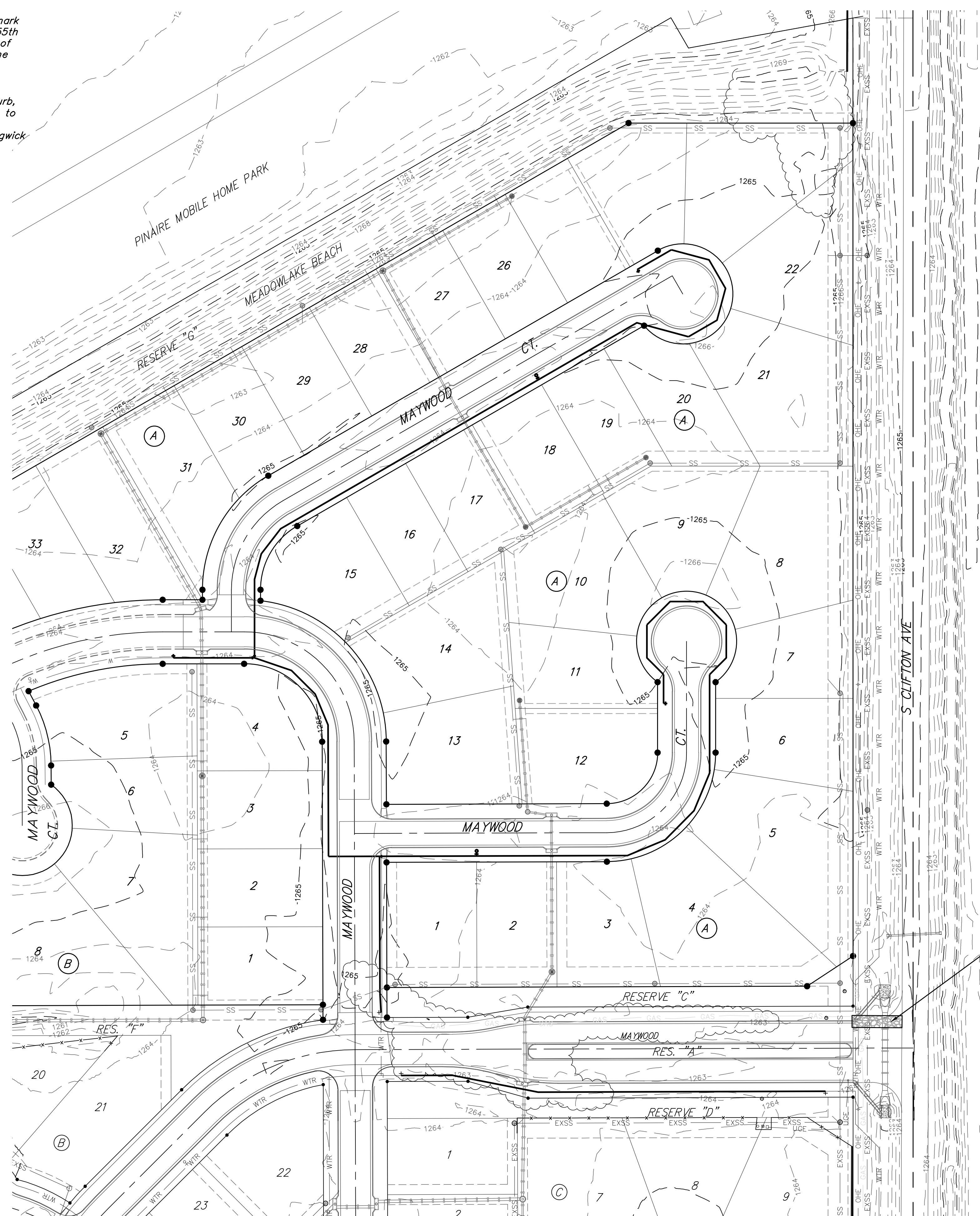


**BENCHMARK:**

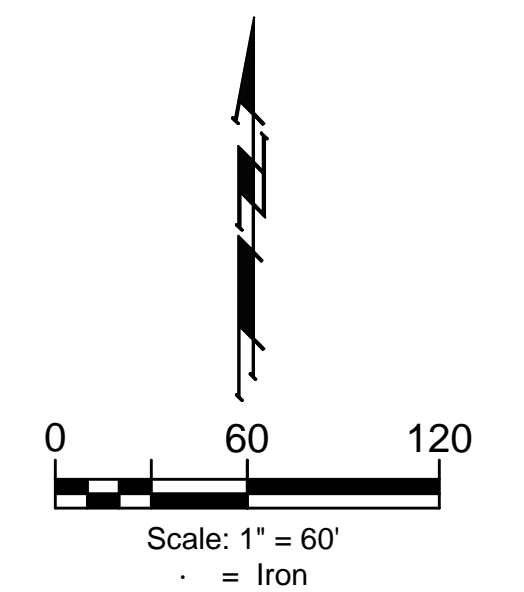
BM #1 - City of Wichita Benchmark Disc, SE Corner of Clifton and 55th Street South, Southwest corner of RCB, on top of hubguard at the West end.  
Elev. = 1263.61 NAVD88

BM #2 - " " Cut on top of curb, north side of Shoffner, adjacent to SE corner of Lot 14 Block B, Meadowlake Beach Addition, Sedgwick County, Kansas.  
Elev. = 1264.80 NAVD88



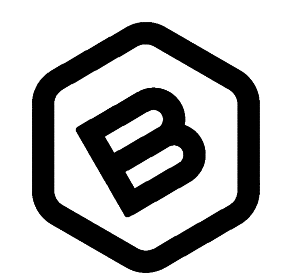
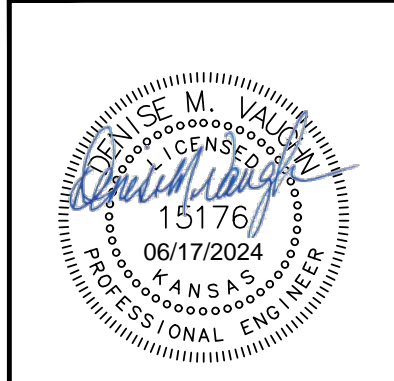
EROSION CONTROL MEASURE	INSTALL	MAINTAIN
CONSTRUCTION ENTRANCE (EA)	0	1

\* ALL EXISTING BMPs INCLUDING CONSTRUCTION ENTRANCE, SEDIMENT BARRIERS, SILT FENCE, CUT-OFF TRENCH, AND EROSION CONTROL MAT SHALL BE MAINTAINED AND REPAIRED IF NECESSARY.



- NOTES:**
- Contractor shall make sure all erosion control is in place before project is accepted. This plan represents the minimum standard. Any additional erosion control measures shall be installed by the Contractor as needed.
  - All areas disturbed during construction shall be seeded, mulched, and fertilized as per Cover Sheet General Notes.

Existing Ground - - - - - 1364 - - - - -



**BAUGHMAN COMPANY**  
315 Ellis St.  
Wichita, KS 67211  
316-262-7271  
BaughmanCo.com

MEADOWLAKE BEACH  
2ND ADDITION - PHASE I

**EROSION CONTROL**

WATER DISTRIBUTION SYSTEM

PROJECT NUMBER:

DESIGN: DMV DRAWN: JAK

DATE: June 12, 2024

SHEET 8 OF 15

File: E:\Projects\Meadowlake Beach 2nd Addition - Engineering\Phase 1\Water\WTR\_22-08-E270.DWG