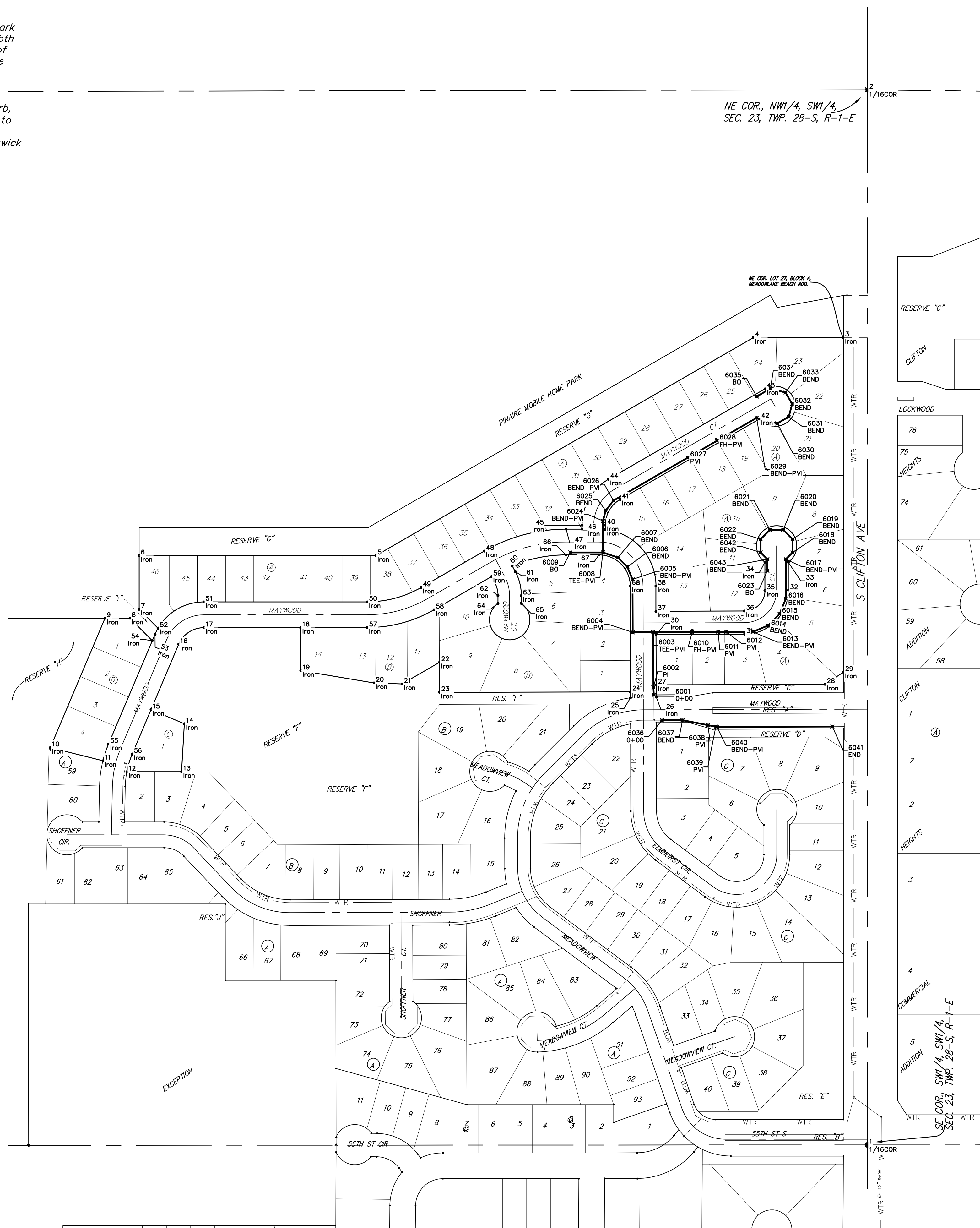


BENCHMARK:

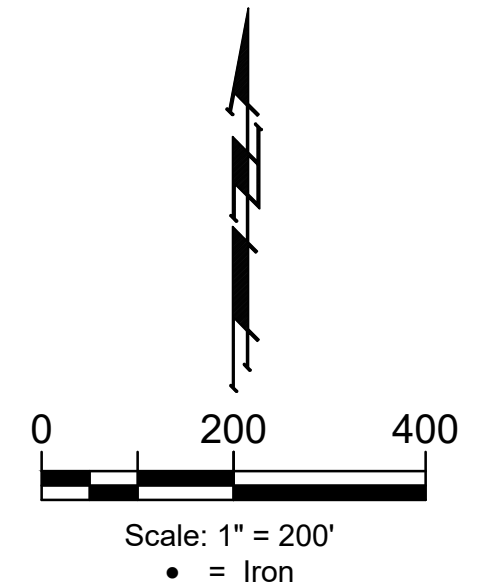
BM #1 - City of Wichita Benchmark Disc, SE Corner of Clifton and 55th Street South, Southwest corner of RCB, on top of hubguard at the West end.
Elev. = 1263.61 NAVD88

BM #2 - "□" Cut on top of curb, north side of Shoffner, adjacent to SE corner of Lot 14 Block B, Meadowlake Beach Addition, Sedgwick County, Kansas.
Elev. = 1264.80 NAVD88



CONTROL POINTS			
Point #	Northing	Easting	Description
1	1,651,334.19	1,631,757.20	1/16COR
2	1,653,958.21	1,631,757.12	1/16COR
3	1,653,342.02	1,631,697.14	Iron
4	1,653,342.01	1,631,472.82	Iron
5	1,652,799.71	1,630,533.77	Iron
6	1,652,799.69	1,629,945.01	Iron
7	1,652,666.36	1,629,945.02	Iron
8	1,652,644.06	1,629,922.06	Iron
9	1,652,643.99	1,629,860.14	Iron
10	1,652,322.39	1,629,724.05	Iron
11	1,652,289.63	1,629,855.03	Iron
12	1,652,262.36	1,629,914.52	Iron
13	1,652,262.34	1,630,050.46	Iron
14	1,652,391.59	1,630,057.49	Iron
15	1,652,416.67	1,629,974.60	Iron
16	1,652,579.20	1,630,043.38	Iron
17	1,652,620.70	1,630,106.00	Iron
18	1,652,620.71	1,630,346.85	Iron
19	1,652,513.58	1,630,347.17	Iron
20	1,652,483.26	1,630,529.24	Iron
21	1,652,480.70	1,630,599.25	Iron
22	1,652,534.32	1,630,692.11	Iron
23	1,652,459.68	1,630,692.33	Iron
24	1,652,461.11	1,631,167.33	Iron
25	1,652,446.11	1,631,167.38	Iron
26	1,652,448.40	1,631,231.37	Iron
27	1,652,478.40	1,631,231.28	Iron
28	1,652,479.66	1,631,651.28	Iron
29	1,652,509.80	1,631,697.16	Iron
30	1,652,603.40	1,631,230.90	Iron
31	1,652,604.06	1,631,451.13	Iron
32	1,652,713.06	1,631,559.81	Iron
33	1,652,783.47	1,631,559.80	Iron
34	1,652,783.46	1,631,501.80	Iron
35	1,652,713.06	1,631,501.81	Iron
36	1,652,662.06	1,631,450.96	Iron
37	1,652,661.39	1,631,230.73	Iron
38	1,652,724.17	1,631,230.54	Iron
39	1,652,864.79	1,631,104.91	Iron
40	1,652,875.74	1,631,104.91	Iron
41	1,652,939.46	1,631,141.69	Iron
42	1,653,139.63	1,631,488.32	Iron
43	1,653,214.54	1,631,502.05	Iron
44	1,652,989.68	1,631,112.68	Iron
45	1,652,875.74	1,631,046.91	Iron
46	1,652,865.74	1,631,046.91	Iron
47	1,652,865.74	1,631,007.12	Iron
48	1,652,811.19	1,630,803.60	Iron
49	1,652,720.63	1,630,646.79	Iron
50	1,652,684.71	1,630,512.77	Iron
51	1,652,684.70	1,630,106.00	Iron
52	1,652,619.23	1,629,991.99	Iron
53	1,652,604.14	1,629,984.44	Iron
54	1,652,588.23	1,629,977.71	Iron
55	1,652,331.10	1,629,868.90	Iron
56	1,652,306.16	1,629,927.84	Iron
57	1,652,620.71	1,630,512.77	Iron
58	1,652,665.21	1,630,678.79	Iron
59	1,652,747.69	1,630,821.62	Iron
60	1,652,774.46	1,630,873.08	Iron
61	1,652,780.11	1,630,880.66	Iron
62	1,652,700.05	1,630,837.61	Iron
63	1,652,700.22	1,630,895.61	Iron
64	1,652,680.85	1,630,837.67	Iron
65	1,652,681.03	1,630,895.67	Iron
66	1,652,801.74	1,631,007.12	Iron
67	1,652,801.74	1,631,088.54	Iron
68	1,652,723.97	1,631,166.54	Iron

WTR POINTS			
Point #	Northing	Easting	Description
6001	1,652,453.36	1,631,225.36	O+00
6002	1,652,472.45	1,631,224.30	PI
6003	1,652,609.37	1,631,223.89	TEE-PV
6004	1,652,609.22	1,631,172.89	BEND-PV
6005	1,652,740.70	1,631,172.49	BEND-PV
6006	1,652,771.53	1,631,159.61	BEND
6007	1,652,795.09	1,631,135.91	BEND
6008	1,652,807.74	1,631,088.91	TEE-PV
6009	1,652,807.74	1,631,017.79	BO
6010	1,652,609.67	1,631,320.89	FH-PV
6011	1,652,609.86	1,631,385.89	PI
6012	1,652,609.92	1,631,405.89	PI
6013	1,652,610.12	1,631,471.60	BEND-PV
6014	1,652,625.91	1,631,509.41	BEND
6015	1,652,654.98	1,631,538.30	BEND
6016	1,652,692.73	1,631,553.81	BEND
6017	1,652,791.02	1,631,553.80	BEND-PV
6018	1,652,807.74	1,631,570.53	BEND
6019	1,652,840.65	1,631,570.53	BEND
6020	1,652,863.92	1,631,547.26	BEND
6021	1,652,863.92	1,631,514.35	BEND
6022	1,652,840.65	1,631,491.08	BEND
6023	1,652,762.14	1,631,507.80	BO
6024	1,652,886.21	1,631,088.91	BEND-PV
6025	1,652,911.62	1,631,105.71	BEND
6026	1,652,936.74	1,631,124.98	BEND-PV
6027	1,653,043.54	1,631,309.92	PI
6028	1,653,085.68	1,631,382.89	FH-PV
6029	1,653,142.42	1,631,481.14	BEND-PV
6030	1,653,128.61	1,631,532.67	BEND
6031	1,653,145.07	1,631,561.17	BEND
6032	1,653,176.86	1,631,569.69	BEND
6033	1,653,205.36	1,631,553.23	BEND
6034	1,653,215.44	1,631,515.60	BEND
6035	1,653,195.77	1,631,481.54	BO
6036	1,652,390.44	1,631,245.54	O+00
6037	1,652,390.59	1,631,296.92	BEND
6038	1,652,378.25	1,631,359.95	PI
6039	1,652,374.41	1,631,379.58	PI
6040	1,652,373.85	1,631,382.43	BEND-PV
6041	1,652,374.71	1,631,669.66	END
6042	1,652,807.74	1,631,491.08	BEND
6043	1,652,791.01	1,631,507.80	BEND



BAUGHMAN COMPANY
 315 Ellis St.
 Wichita, KS 67211
 316-262-7271
 BaughmanCo.com

MEADOWLAKE BEACH
 2ND ADDITION - PHASE

COORDINATES

WATER LINE
 IMPROVEMENTS
 PROJECT NUMBER:

DESIGN: DMV DRAWN: JAK
 DATE: June 12, 2024

File: E:\Projects\Meadowlake Beach 2nd Addition - Engineering\Phase 1\Water\WTR_22-08-E270.DWG