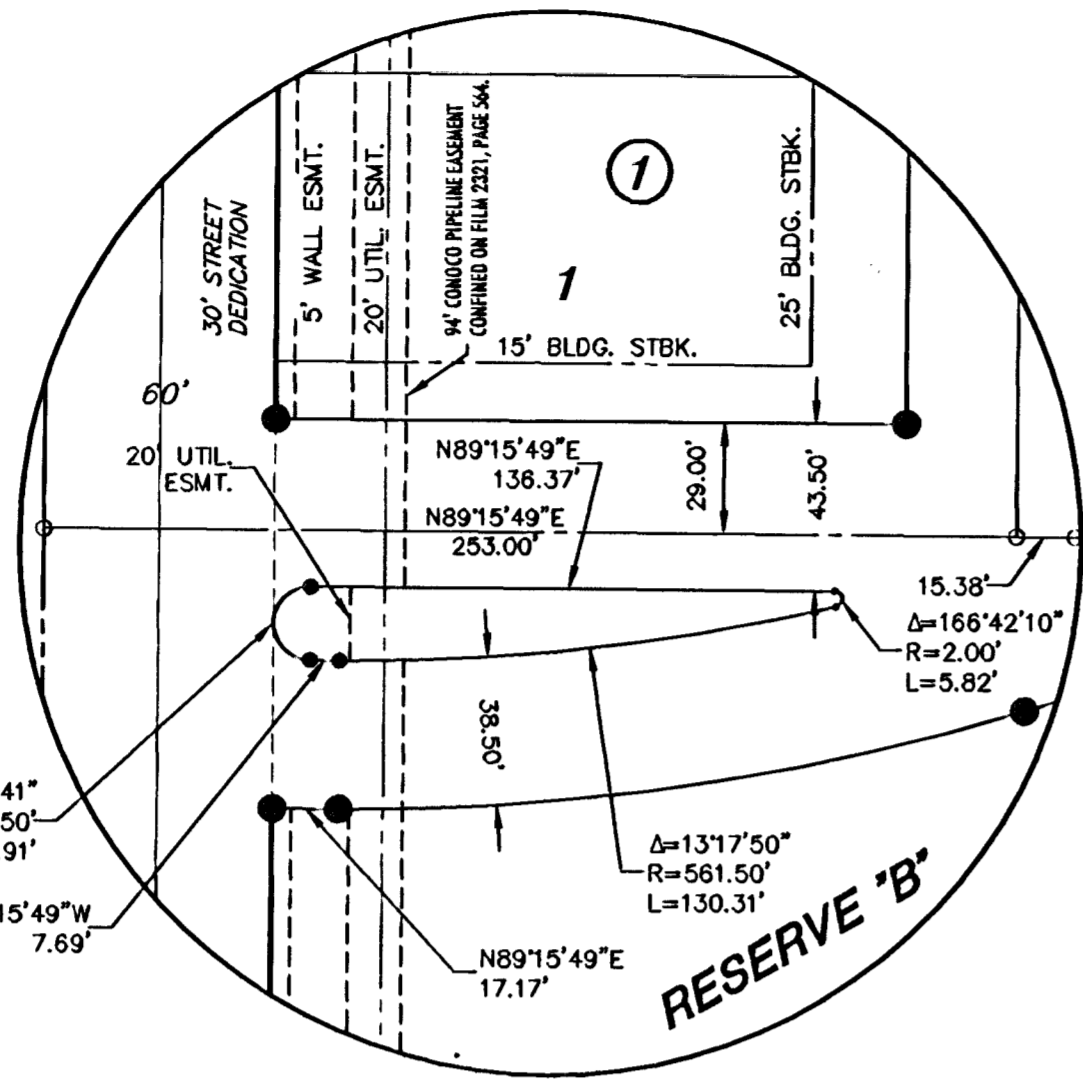


MINIMUM PAD ELEVATIONS (LOWEST OPENINGS)			
LOTS	BLOCK	ELEVATION	
		(CITY DATUM)	(NGVD)
1	3	148.6	1336.0
2	3	148.6	1336.0
3	3	148.6	1336.0
4	3	148.6	1336.0
5	3	148.6	1336.0
6	3	148.6	1336.0
7	3	148.6	1336.0
8	3	148.6	1336.0
9	3	148.6	1336.0
10	3	148.6	1336.0
11	3	148.6	1336.0
12	3	148.6	1336.0
13	3	148.6	1336.0
14	3	148.6	1336.0
15	3	148.6	1336.0
16	3	148.6	1336.0
17	3	148.6	1336.0
18	3	148.6	1336.0
19	3	148.6	1336.0
20	3	148.6	1336.0
6	4	138.8	1326.2
7	4	138.8	1326.2
8	4	138.8	1326.2
9	4	138.8	1326.2
10	4	138.8	1326.2
11	4	138.8	1326.2
12	4	138.8	1326.2
13	4	138.8	1326.2
14	4	138.8	1326.2
15	4	138.8	1326.2
16	4	138.8	1326.2
17	4	138.8	1326.2
18	4	138.8	1326.2
19	4	138.8	1326.2
20	4	138.8	1326.2
21	4	138.8	1326.2
22	4	138.8	1326.2
23	4	138.8	1326.2
24	4	138.8	1326.2
25	4	138.8	1326.2
1	5	137.6	1325.0
2	5	137.6	1325.0

# FINAL PLAT

## COUNTRY HOLLOW ADDITION

### AN ADDITION TO WICHITA, SEDGWICK COUNTY, KANSAS



DETAIL RESERVE "A"  
1"=50'

#### LEGEND

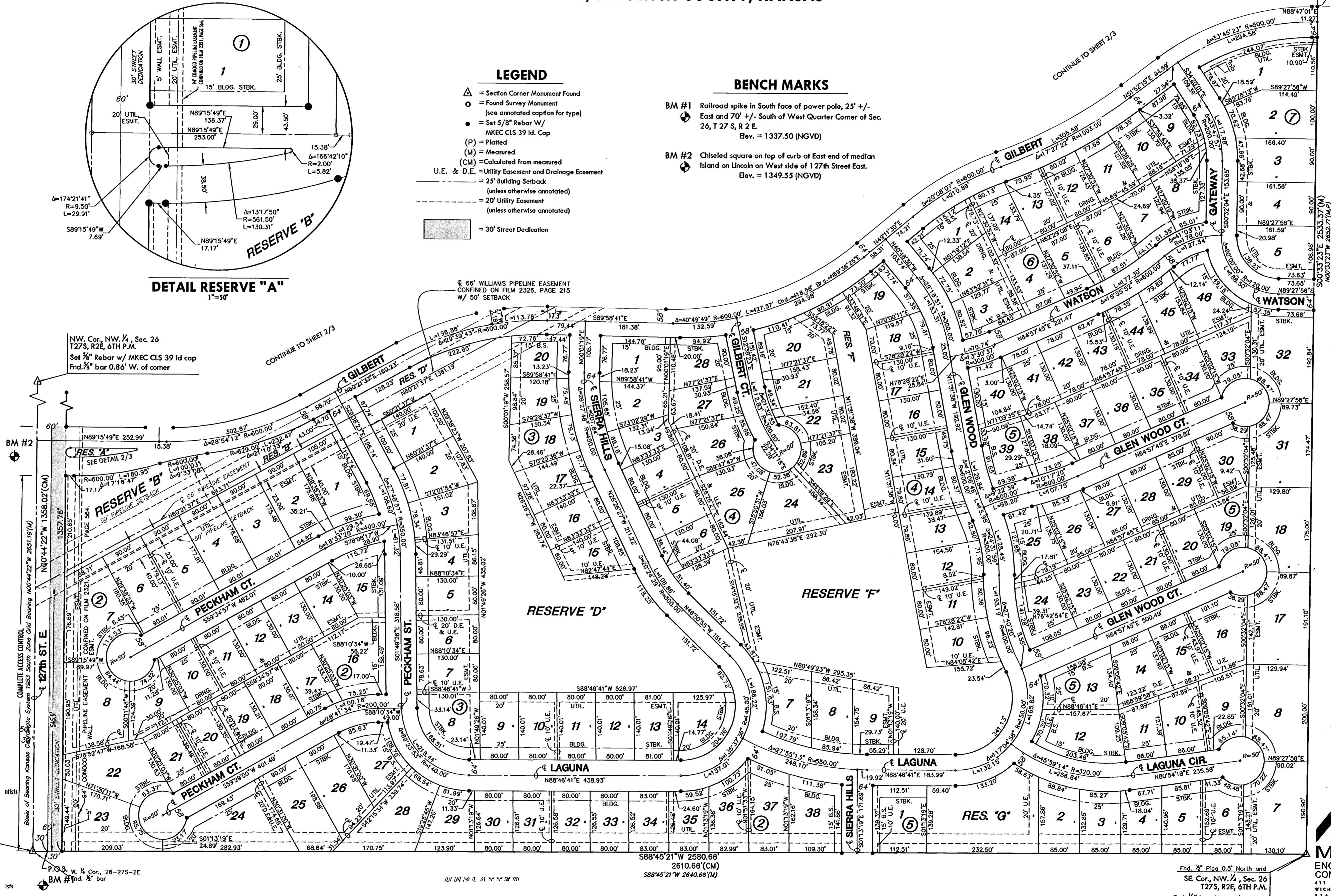
- △ = Section Corner Monument Found
- = Found Survey Monument (see annotated caption for type)
- = Set 5/8" Rebar w/ MKEC CLS 39 Id. Cap
- (P) = Platted
- (M) = Measured
- (CM) = Calculated from measured
- U.E. & D.E. = Utility Easement and Drainage Easement
- = 25' Building Setback (unless otherwise annotated)
- - - = 20' Utility Easement (unless otherwise annotated)
- ▭ = 30' Street Dedication

#### BENCH MARKS

- BM #1 Railroad spike in South face of power pole, 25' +/- East and 70' +/- South of West Quarter Corner of Sec. 26, T 27 S, R 2 E. Elev. = 1337.50 (NGVD)
- BM #2 Chiseled square on top of curb at East end of median Island on Lincoln on West side of 127th Street East. Elev. = 1349.55 (NGVD)

NW. Cor., NW 1/4, Sec. 26  
T27S, R2E, 6TH P.M.  
Set 3/8" Rebar w/ MKEC CLS 39 Id cap

NE. Cor., NW 1/4, Sec. 26  
T27S, R2E, 6TH P.M.  
Fnd. 3/8" Rebar w/o Id cap in thimble



DOCUMENT NO.

SW. Cor., NW 1/4, Sec. 26  
T27S, R2E, 6TH P.M.  
Fnd. 1/2" Rebar w/o Id cap



Fnd. 1/2" Pipe 0.5' North and  
SE. Cor., NW 1/4, Sec. 26  
T27S, R2E, 6TH P.M.  
Fnd. 1/2" Iron Pipe w/o Id cap

J:\Client\04429\wg\Gilbert Phase 1\044296