

STA. 17+50.83, 23' LT.
INSTALL 60 L.F. 18" RCP
LENGTH INCL. END SECTIONS.
FL W = 1361.72
FL E = 1362.0
PLACE 11 S.Y. LIGHT STONE
RIPRAP AS INDICATED.

REGRADE 100 L.F.
DITCH AS INDICATED

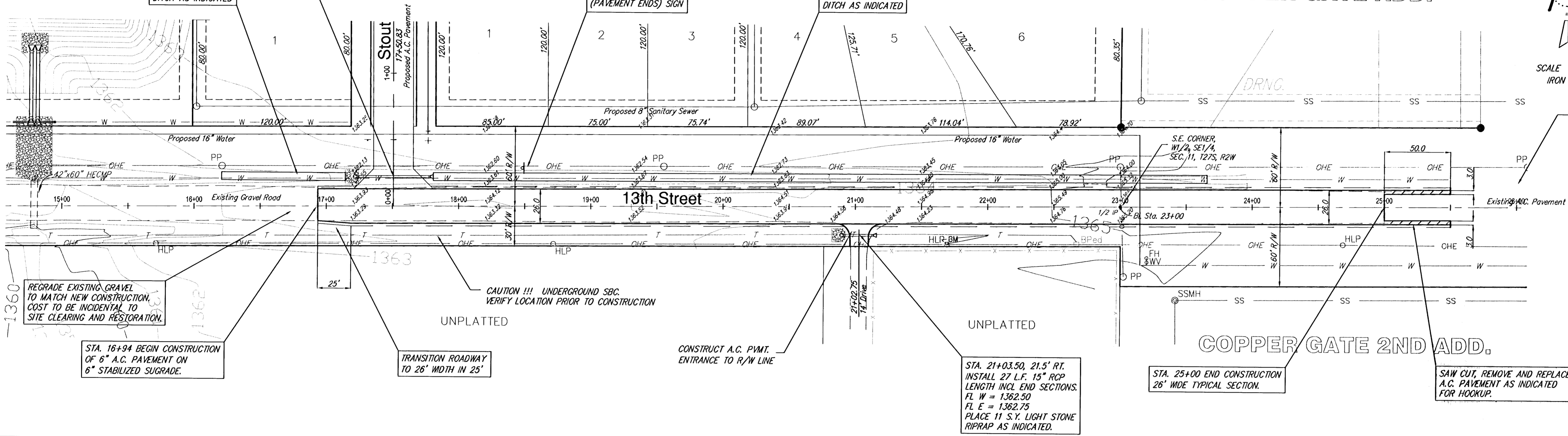
CHERYL'S HOLLOW ADD.

CONSTRUCTION TRAFFIC CONTROL
TO BE INSTALLED AND MAINTAINED
IN ACCORDANCE WITH DETAILS ON
SHEETS 28-29.

COPPER GATE ADD.



SCALE 1" = 40'
IRON = •



REGRADE EXISTING GRAVEL
TO MATCH NEW CONSTRUCTION.
COST TO BE INCIDENTAL TO
SITE CLEARING AND RESTORATION.

STA. 16+94 BEGIN CONSTRUCTION
OF 6" A.C. PAVEMENT ON
6" STABILIZED SUGRADE.

TRANSITION ROADWAY
TO 26' WIDTH IN 25'

CAUTION !!! UNDERGROUND SBC.
VERIFY LOCATION PRIOR TO CONSTRUCTION

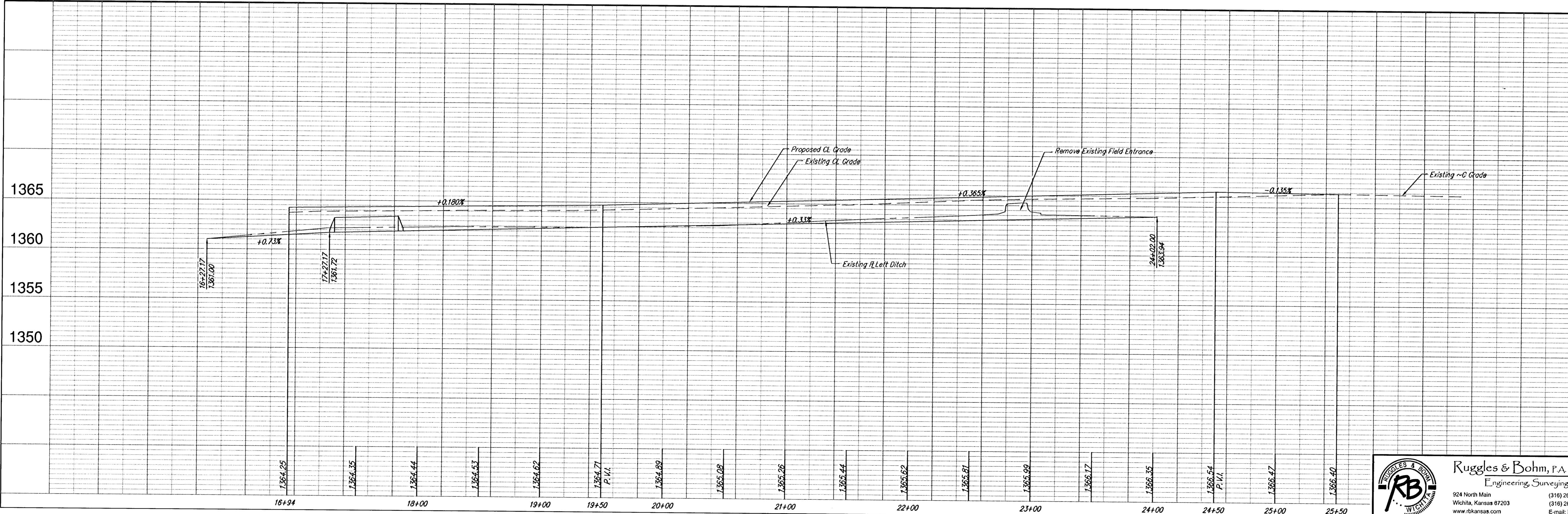
CONSTRUCT A.C. PVMT.
ENTRANCE TO R/W LINE

STA. 21+03.50, 21.5' RT.
INSTALL 27 L.F. 15" RCP
LENGTH INCL. END SECTIONS.
FL W = 1362.50
FL E = 1362.75
PLACE 11 S.Y. LIGHT STONE
RIPRAP AS INDICATED.

STA. 25+00 END CONSTRUCTION
26' WIDE TYPICAL SECTION.

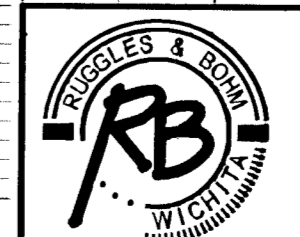
SAW CUT, REMOVE AND REPLACE
A.C. PAVEMENT AS INDICATED
FOR HOOKUP.

REMOVE 'PAVEMENT ENDS' SIGN



DESIGN KWL	PROJECT NUMBER	REVISIONS
UTILITY	DRAWING FILE	DATE
	Drawing 13th Street	Aug. 3, 2005
		REVIEW

Cheryl's Hollow Addition, Paving Improvements
13th Street North
WICHITA, KANSAS



Ruggles & Bohm, P.A.
Engineering, Surveying, Land Planning
924 North Main
Wichita, Kansas 67203
www.rbkansas.com
(318) 264-8008
(318) 264-4821 fax
E-mail: info@rbkansas.com

SHEET
14
OF
43