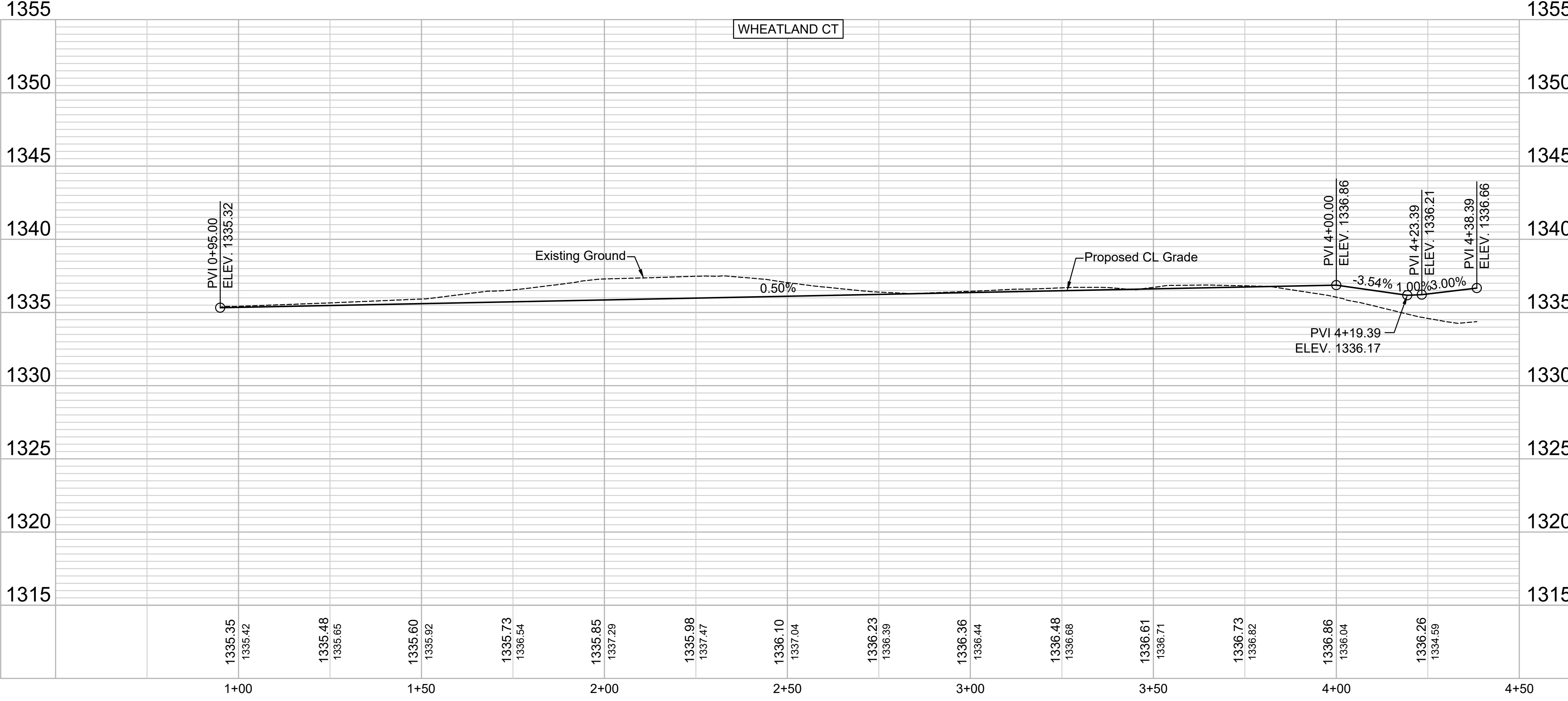
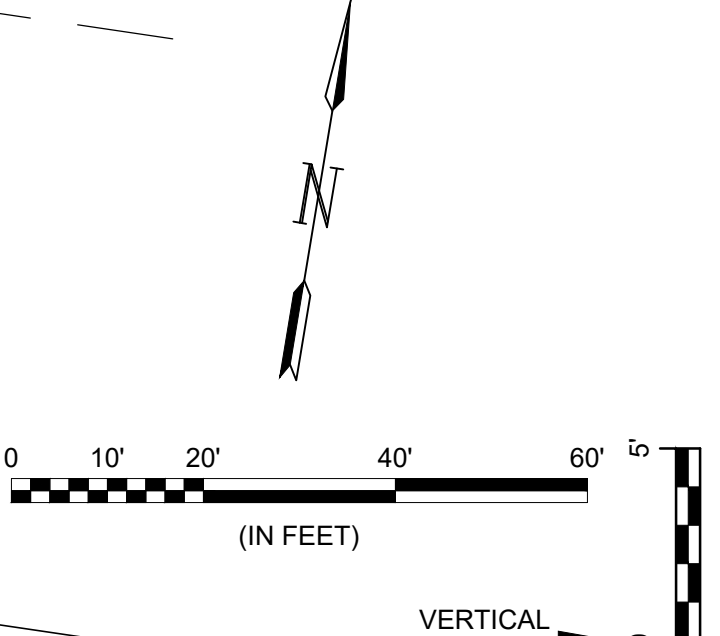
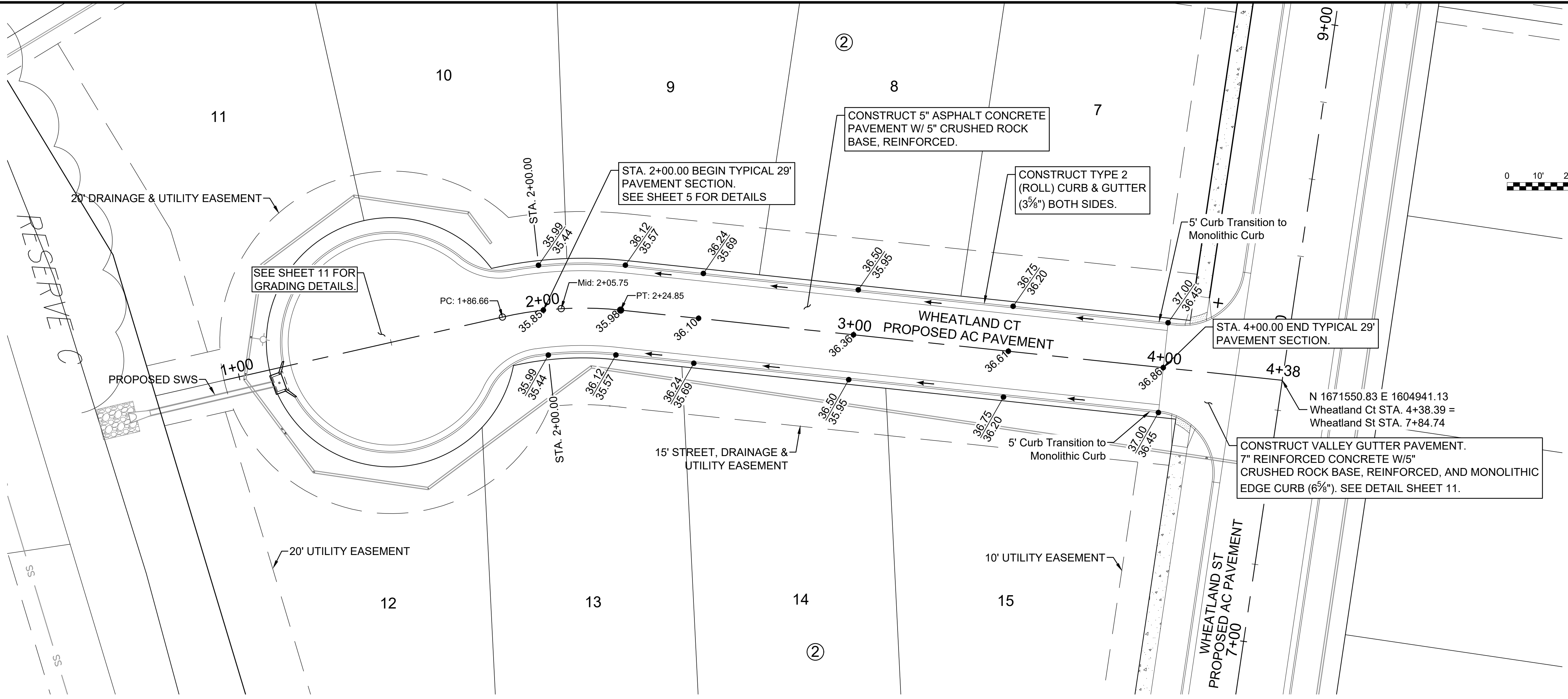


File: L:\2022\22T41006 - Lionsgate Addition\Drawings\C3DPAVING & SWS\WHEATLAND CT P&P.dwg Last Save: 5/9/2024 1:37 PM Last saved by: MCarraPiedra
 Last plotted by: Carrera-Piedra, Mariana Plot Date: 6/20/2024 9:23 AM Plotter used: None



GARVER
 © 2023 GARVER, LLC
 THIS DOCUMENT, ALONG WITH THE IDEAS AND DESIGNS CONVEYED HEREIN, SHALL BE CONSIDERED INSTRUMENTS OF PROFESSIONAL SERVICE AND ARE PROPERTY OF GARVER, LLC. ANY USE, REPRODUCTION, OR DISTRIBUTION OF THIS DOCUMENT, ALONG WITH THE IDEAS AND DESIGN CONTAINED HEREIN, IS PROHIBITED UNLESS AUTHORIZED IN WRITING BY GARVER, LLC OR EXPLICITLY ALLOWED IN THE GOVERNING PROFESSIONAL SERVICES AGREEMENT FOR THIS WORK.

1995 Midfield Road
 Wichita, KS 67209
 (316) 264-8008



N 1671550.83 E 1604941.13
 Wheatland Ct STA. 4+38.39 =
 Wheatland St STA. 7+84.74

CONSTRUCT VALLEY GUTTER PAVEMENT.
 7" REINFORCED CONCRETE W/5" CRUSHED ROCK BASE, REINFORCED, AND MONOLITHIC EDGE CURB (6 3/8"). SEE DETAIL SHEET 11.

REV.	DATE	DESCRIPTION	BY



CITY OF WICHITA
 WICHITA, KANSAS
 LIONSGATE
 PAVING & SWS

WHEATLAND
 CT P&P

JOB NO.: 22T41006
 DATE: JUNE 2024
 DESIGNED BY: .
 DRAWN BY: .

BAR IS ONE INCH ON ORIGINAL DRAWING
 IF NOT ONE INCH ON THIS SHEET, ADJUST SCALES ACCORDINGLY.

DRAWING NUMBER

SHEET NUMBER **10** OF **40**