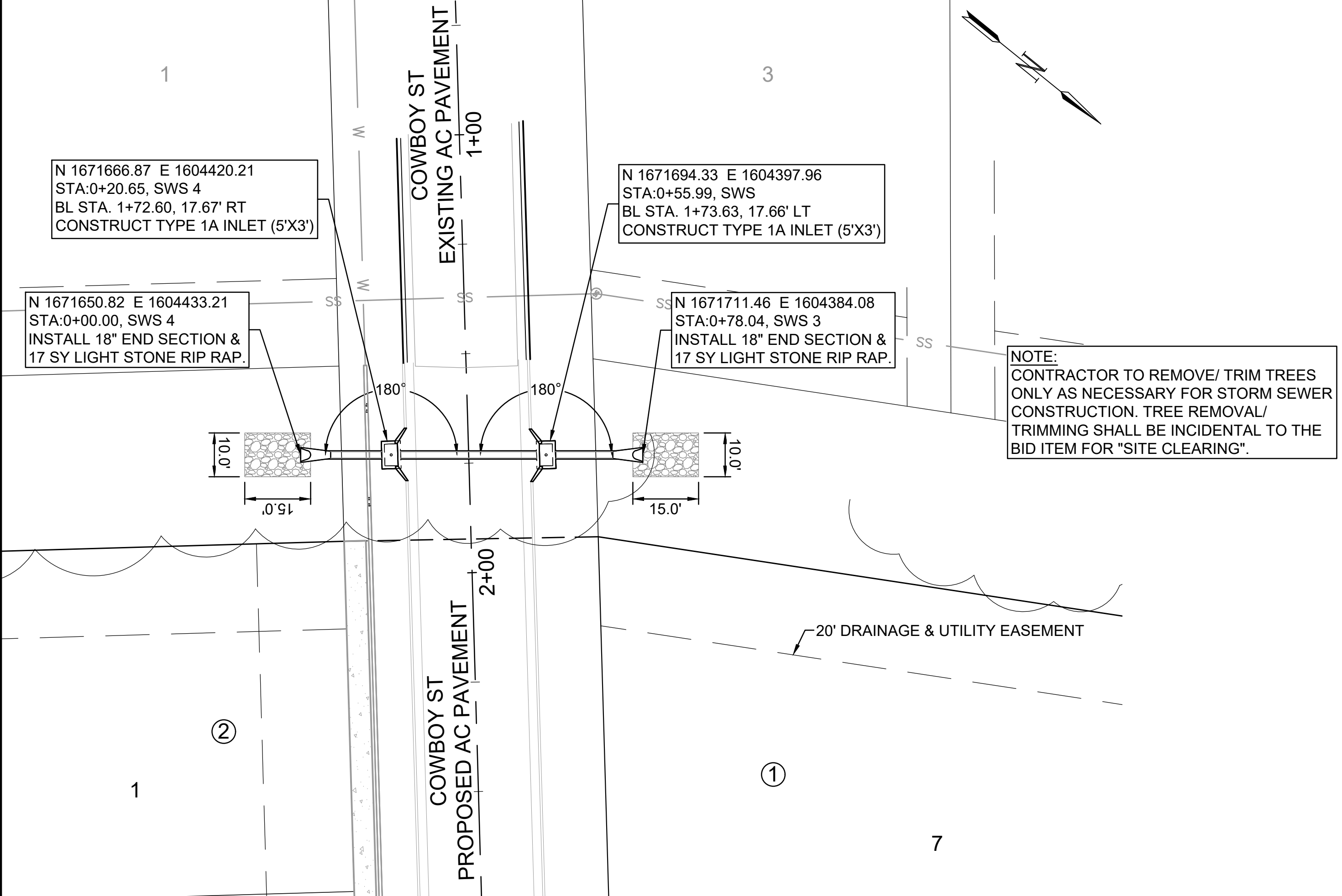


SOUTHGATE PASSAGE ADDITION

SOUTHGATE PASSAGE ADDITION



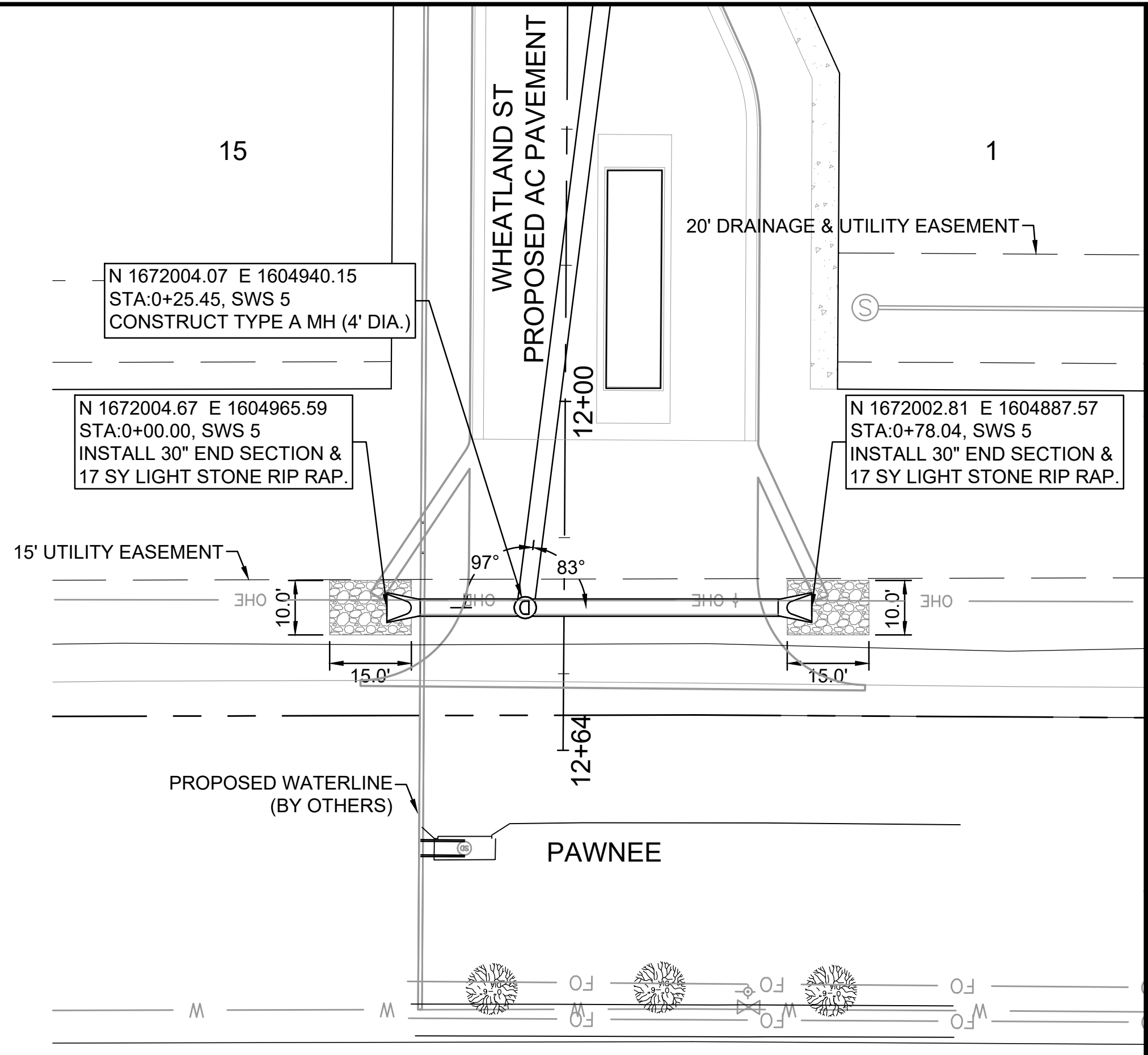
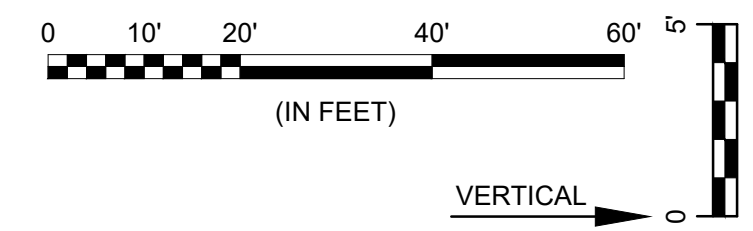
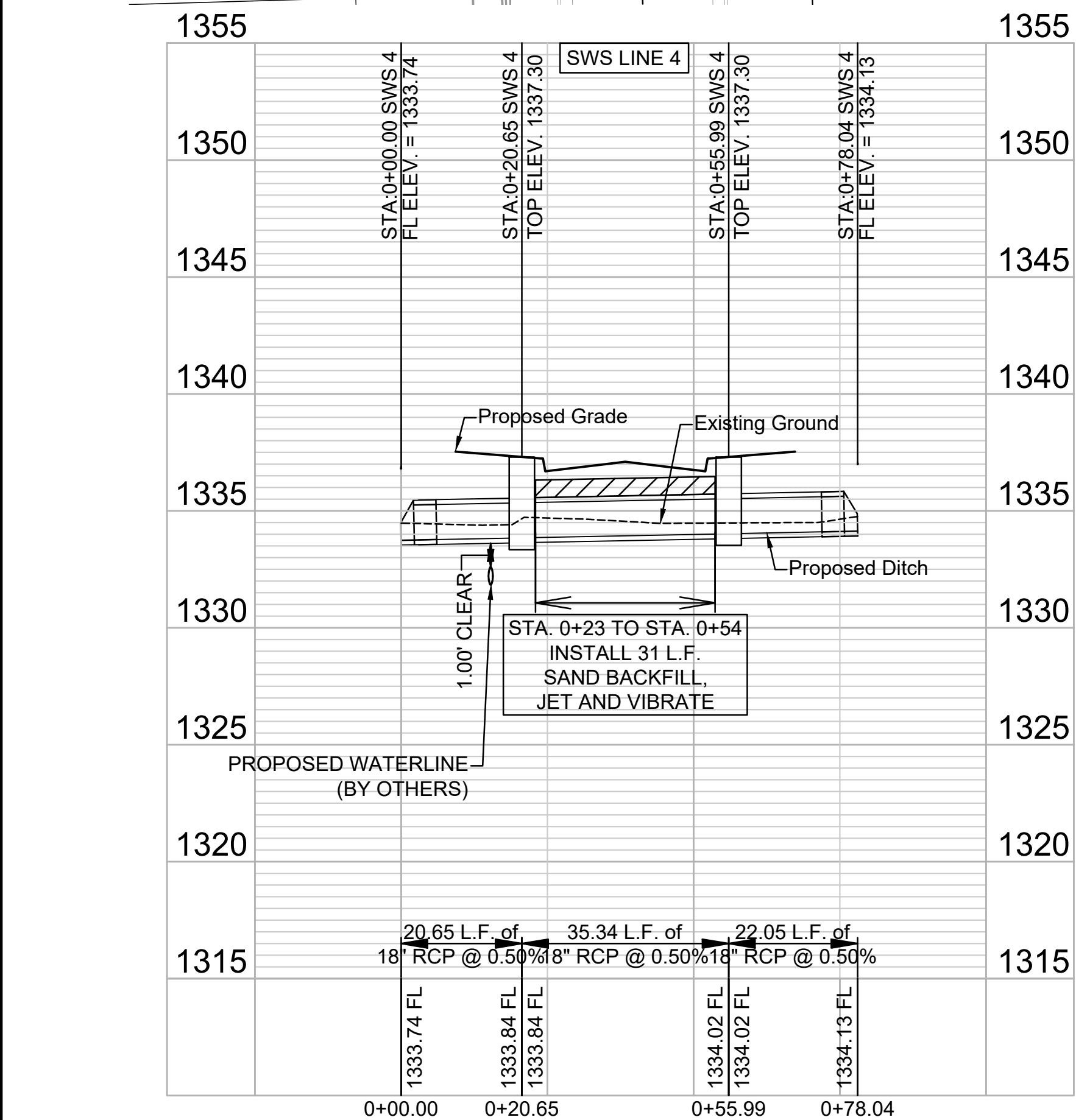
NOTE:
CONTRACTOR TO REMOVE/ TRIM TREES ONLY AS NECESSARY FOR STORM SEWER CONSTRUCTION. TREE REMOVAL/ TRIMMING SHALL BE INCIDENTAL TO THE BID ITEM FOR "SITE CLEARING".

N 1671666.87 E 1604420.21
STA:0+20.65, SWS 4
BL STA. 1+72.60, 17.67' RT
CONSTRUCT TYPE 1A INLET (5'X3')

N 1671694.33 E 1604397.96
STA:0+55.99, SWS
BL STA. 1+73.63, 17.66' LT
CONSTRUCT TYPE 1A INLET (5'X3')

N 1671650.82 E 1604433.21
STA:0+00.00, SWS 4
INSTALL 18" END SECTION &
17 SY LIGHT STONE RIP RAP.

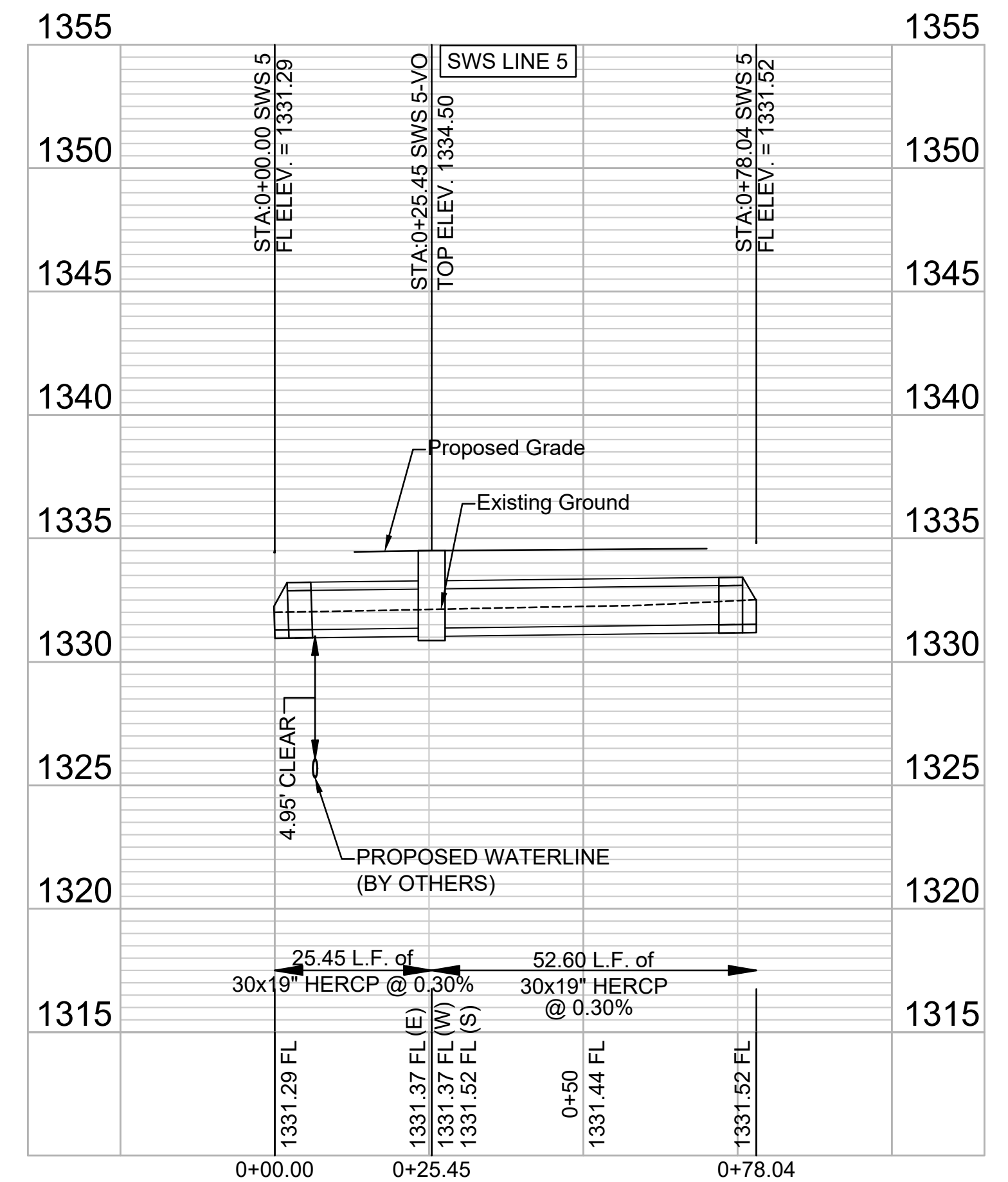
N 1671711.46 E 1604384.08
STA:0+78.04, SWS 3
INSTALL 18" END SECTION &
17 SY LIGHT STONE RIP RAP.



N 1672004.07 E 1604940.15
STA:0+25.45, SWS 5
CONSTRUCT TYPE A MH (4' DIA.)

N 1672004.67 E 1604965.59
STA:0+00.00, SWS 5
INSTALL 30" END SECTION &
17 SY LIGHT STONE RIP RAP.

N 1672002.81 E 1604887.57
STA:0+78.04, SWS 5
INSTALL 30" END SECTION &
17 SY LIGHT STONE RIP RAP.

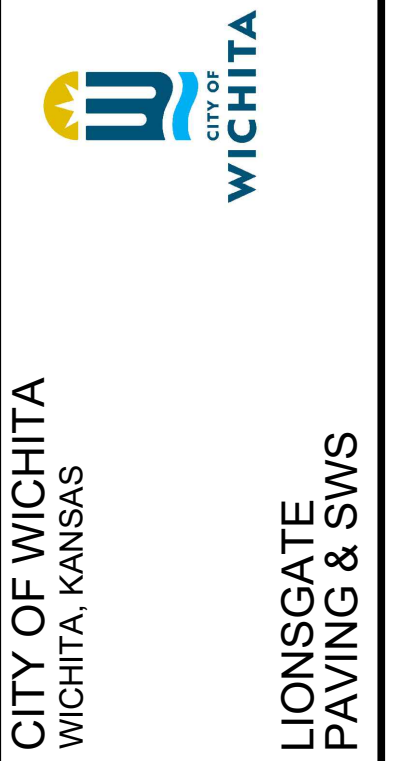


© 2023 GARVER, LLC
THIS DOCUMENT, ALONG WITH THE IDEAS AND DESIGNS CONVEYED HEREIN, SHALL BE CONSIDERED INSTRUMENTS OF PROFESSIONAL SERVICE AND ARE PROPERTY OF GARVER, LLC. ANY USE, REPRODUCTION, OR DISTRIBUTION OF THIS DOCUMENT, ALONG WITH THE IDEAS AND DESIGNS CONTAINED HEREIN, IS PROHIBITED UNLESS AUTHORIZED IN WRITING BY GARVER, LLC OR EXPLICITLY ALLOWED IN THE GOVERNING PROFESSIONAL SERVICES AGREEMENT FOR THIS WORK.

1995 Midfield Road
Wichita, KS 67209
(316) 264-8008



REV.	DATE	DESCRIPTION



SWS LINE 4 & 5

JOB NO.: 22T41006
DATE: JUNE 2024
DESIGNED BY: .
DRAWN BY: .

BAR IS ONE INCH ON ORIGINAL DRAWING
IF NOT ONE INCH ON THIS SHEET, ADJUST SCALES ACCORDINGLY.

DRAWING NUMBER

SHEET NUMBER 26 OF 40

File: L:\2022\22T41006 - Lionsgate Addition\Drawings\C3DPAVING & SWS\SWS LINE 4 & 5.dwg Last Save: 6/19/2024 1:27 PM Last saved by: MCarraerPiedra Last plotted by: Carrera-Piedra, Mariana Plot Date: 6/20/2024 9:28 AM Plotter used: None