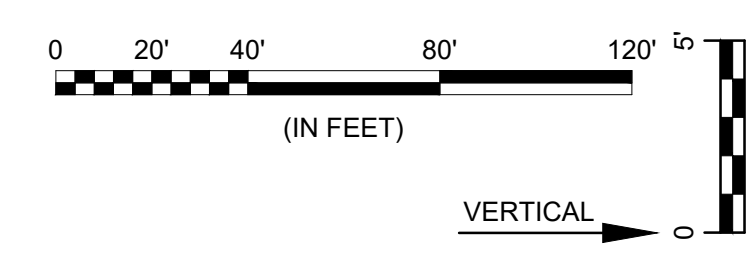
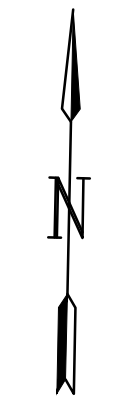


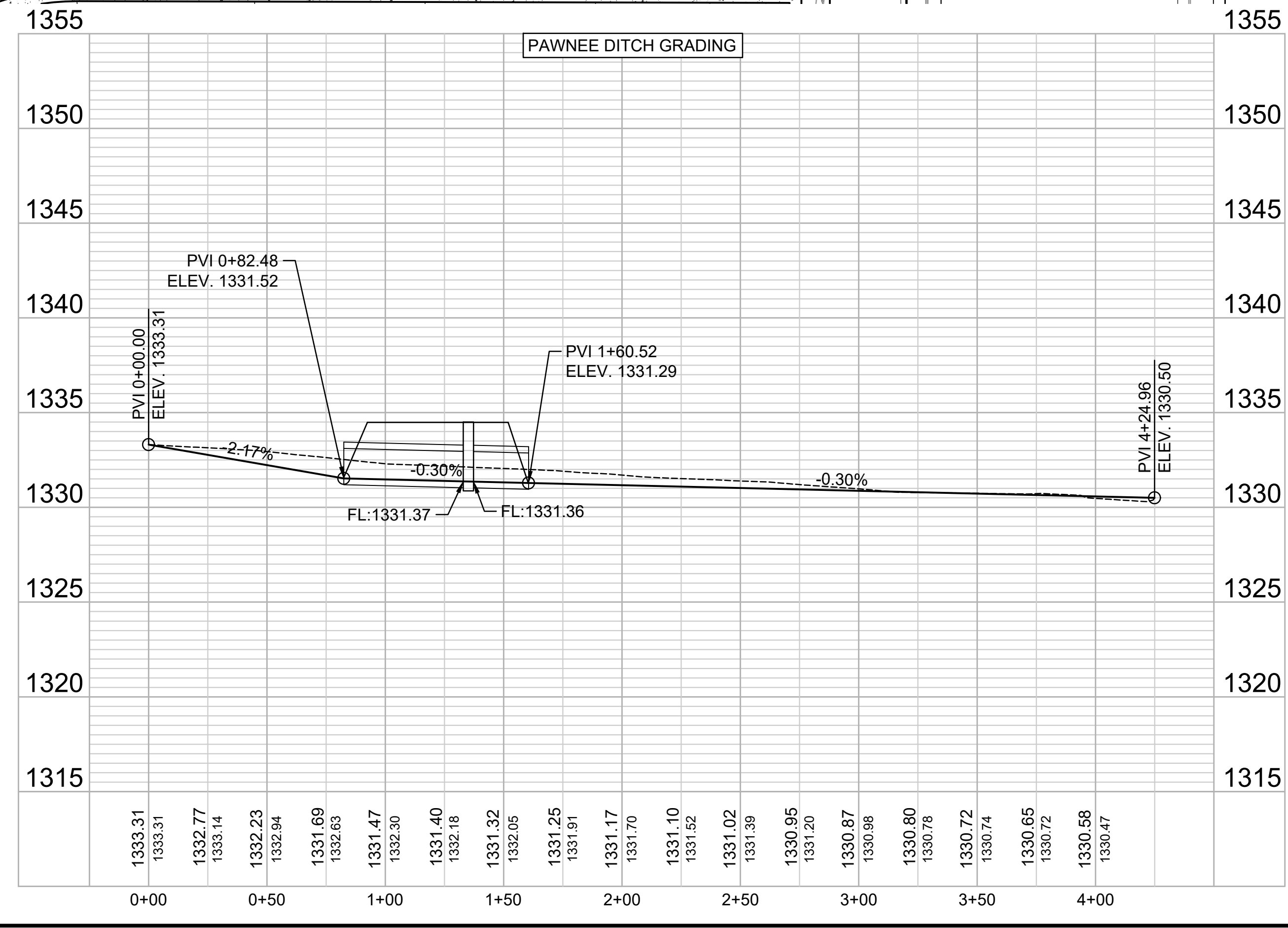
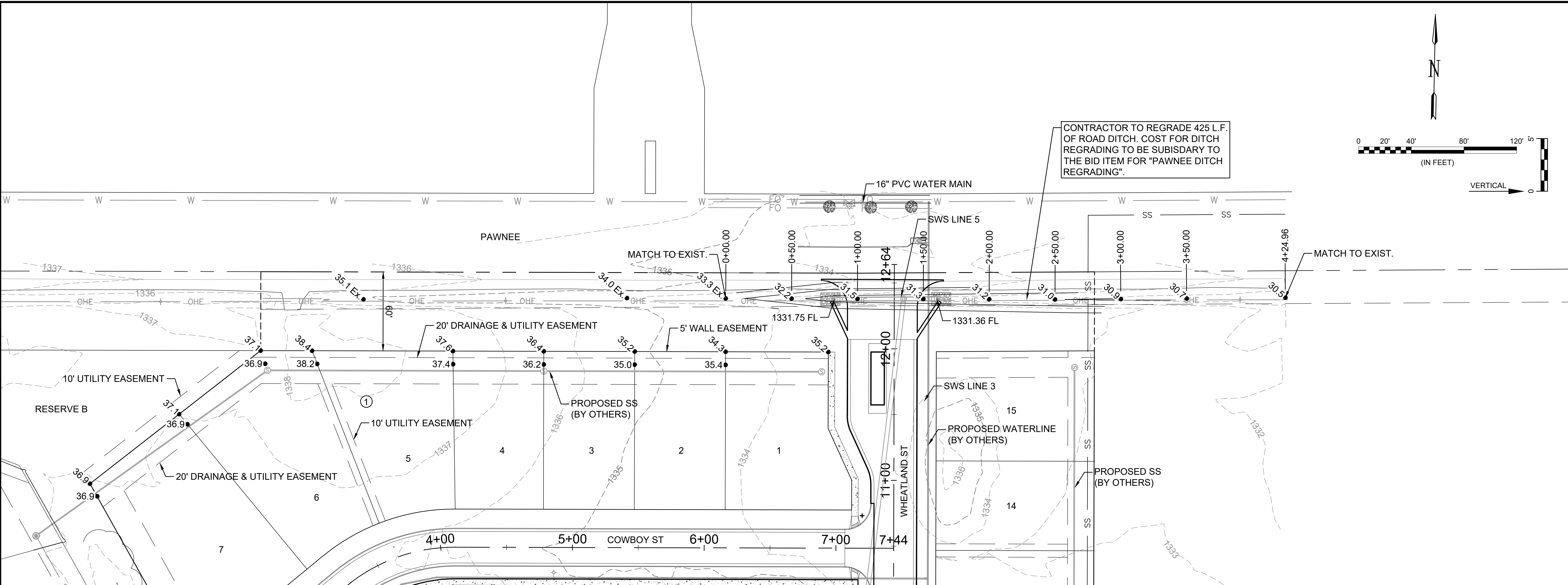


© 2023 GARVER, LLC
 THIS DOCUMENT, ALONG WITH THE IDEAS AND DESIGNS CONVEYED HEREIN, SHALL BE CONSIDERED INSTRUMENTS OF PROFESSIONAL SERVICE AND ARE PROPERTY OF GARVER, LLC. ANY USE, REPRODUCTION, OR DISTRIBUTION OF THIS DOCUMENT, ALONG WITH THE IDEAS AND DESIGN CONTAINED HEREIN, IS PROHIBITED UNLESS AUTHORIZED IN WRITING BY GARVER, LLC OR EXPLICITLY ALLOWED IN THE GOVERNING PROFESSIONAL SERVICES AGREEMENT FOR THIS WORK.

1995 Midfield Road
 Wichita, KS 67209
 (316) 264-8008



CONTRACTOR TO REGRADE 425 L.F. OF ROAD DITCH. COST FOR DITCH REGRADING TO BE SUBSIDARY TO THE BID ITEM FOR "PAWNEE DITCH REGRADING".



File: L:\2022\22T41006 - Lionsgate Addition\Drawings\C3DPAVING & SWS\NORTH DITCH GRADING.dwg Last Save: 6/11/2024 1:59 PM Last saved by: MCarreraPiedra
 Last plotted by: Carrera-Piedra, Mariana Plot Date: 6/20/2024 9:30 AM Plotter used: None

REV.	DATE	DESCRIPTION	BY