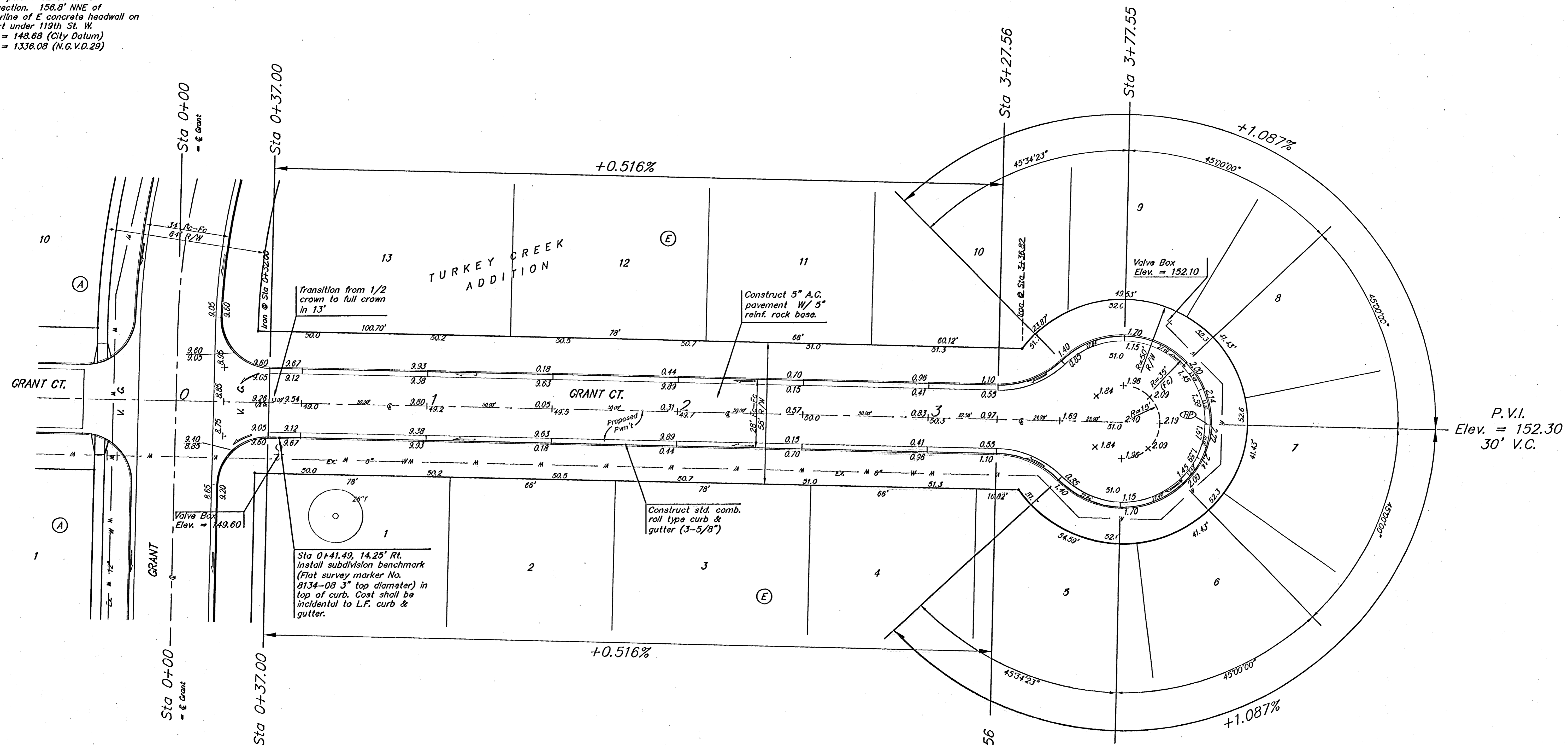


**BENCHMARK**  
 119th St. W. & Pawnee  
 City of Wichita Benchmark Disc.  
 NE corner of intersection. 40' E  
 and 30' N of centerline. 59.5' N of  
 power pole @ SE corner of  
 intersection. 156.8' NNE of  
 centerline of E concrete headwall on  
 culvert under 119th St. W.  
 Elev. = 148.68 (City Datum)  
 Elev. = 1336.08 (N.G.V.D.29)

Scale: 1" = 20'  
 • = Iron



Subdivision Bench Marks

| Street & Station                            | Location Description   | Elevation |
|---|--|-----------|
| Jewell Ct. (48-60, E)<br>3+28.78, 14.25' Rt | Adjacent to Fire Hydrant at S. End of E. Curb Return of Jewell & Jewell Ct. (48-60, Block E) |           |
| Rogers Cir.<br>0+44.71, 14.25' Rt.          | Adjacent to Fire Hydrant at N. End of E. Curb Return of Grant & Rogers Cir.                  |           |
| Grant Ct. (1-13, E)<br>0+41.49, 14.25' Rt.  | Adjacent to Fire Hydrant at N. End of E. Curb Return of Grant & Grant Ct. (1-13, Block E)    |           |

Adjust water valve boxes as needed to grade. Incidental to Site Clearing and Restoration.

**NOTE:** ROLL TYPE CURB & GUTTER TO BE CONSTRUCTED ON THE PAVEMENT SHOWN ON THIS SHEET. TOP OF CURB ELEVATIONS ARE GIVEN FOR FULL HEIGHT CURB.

**Baughman** TURKEY CREEK ADDITION - PH. I  
**GRANT CT.**  
 STA 0+00 TO STA 3+77.55

Baughman Company, P.A. 315 Ellis St. Wichita, KS 67211 P:316-263-7771 F:316-263-0149  
 ENGINEERING | SURVEYING | PLANNING | LANDSCAPE ARCHITECTURE

|                             |                           |
|-----------------------------|---------------------------|
| PROJECT NUMBER<br>472-84028 | DESIGN<br>TMS             |
| REVISIONS                   | APPROVED<br>DATE<br>12/04 |
|                             | SCALE<br>Noted            |
|                             | SHEET<br><b>14 OF 48</b>  |

TurkeyCreek/S09 0406E9311