

STORM WATER SEWER NO. 345

SERVING PORTIONS OF
WOODBRIDGE 2nd, WOODBRIDGE 5th and SUNRIDGE 2nd ADDITIONS

CITY OF WICHITA, KANSAS
M.E. LINDEBAK CITY ENGINEER

CITY PROJECT NO. 468 - 76 - 245 - 81742 - 000 - 000 - 001
INDEX NO. 750232

MAY, 1991

NOTES:

- CONTRACTOR WILL BE REQUIRED TO PROVIDE A MINIMUM ADVANCE NOTICE OF TWENTY-FOUR (24) HOURS TO UTILITY COMPANIES PRIOR TO STARTING ANY EXCAVATION AS FOLLOWS:

KANSAS ONE-CALL 687-2470

THE CONTRACTOR MUST NOTIFY THE FOLLOWING IN CASE OF AN EMERGENCY:

CABLEVISION 262-4270 OR 263-2061
K.P. & L. GAS SERVICE COMPANY 263-7511
KANSAS GAS & ELECTRIC 263-1141
ARKLA GAS COMPANY 942-8350 OR 263-8161
SOUTHWESTERN BELL TELEPHONE COMPANY 1-571-2611
CITY OF WICHITA WATER DEPARTMENT 268-4908
CITY OF WICHITA SEWER MAINTENANCE 268-4071
- THE CONTRACTOR SHALL BE RESPONSIBLE FOR PRESERVING PROPERTY IRONS. THE CONTRACTOR WILL BE REQUIRED TO RE-ESTABLISH ANY PROPERTY IRONS WHICH ARE DAMAGED OR DESTROYED BY HIS CONSTRUCTION OPERATIONS. SUCH IRONS SHALL BE RE-ESTABLISHED BY A LICENSED LAND SURVEYOR IN ACCORDANCE WITH STATE LAWS.
- INTERURBAN TRAFFIC GENERATED OUTSIDE THE PROJECT AREA IS NOT TO BE CARRIED THROUGH CONSTRUCTION.
- EXISTING UTILITIES AND THEIR LOCATION, AS SHOWN ON THE PLANS, REPRESENT THE BEST INFORMATION OBTAINABLE FOR DESIGN. LOCATION INFORMATION HAS BEEN OBTAINED FROM THE VARIOUS UTILITY COMPANIES AND IS EITHER FROM COMPANY RECORD DRAWINGS OR COMPANY PROVIDED FIELD LOCATIONS. THE CONTRACTOR WILL BE REQUIRED TO WORK AROUND EXISTING UTILITIES WITHIN THE RIGHT-OF-WAY WHICH DO NOT CONFLICT WITH PROPOSED CONSTRUCTION.
- RUBBLE FROM THE REMOVAL OF MISCELLANEOUS STRUCTURES AND EXCESS EXCAVATION WHICH IS TO BE WASTED, SHALL BE DISPOSED OF ON SITES TO BE PROVIDED BY THE CONTRACTOR. SITES SHALL BE APPROVED BY THE ENGINEER AS TO SUITABILITY, APPEARANCE AND SITE LOCATION. LOCATIONS THAT, IN THE OPINION OF THE ENGINEER, WILL LEAVE AN UNSIGHTLY APPEARANCE WILL NOT BE APPROVED.
- THE CONTRACTOR SHALL NOTIFY PIPELINE COMPANIES AT LEAST 24 HOURS IN ADVANCE OF ANY WORK BEING PERFORMED ACROSS AND/OR ADJACENT TO PIPELINES.
- TREES AND SHRUBS IN PUBLIC RIGHT-OF-WAY WHICH ARE IN DIRECT CONFLICT WITH PROPOSED NEW CONSTRUCTION SHALL BE REMOVED BY THE CONTRACTOR WITH THE ENGINEER'S APPROVAL. TREES AND SHRUBS WHICH ARE NOT IN DIRECT CONFLICT WITH PROPOSED NEW CONSTRUCTION SHALL BE SAVED AND PROTECTED FROM DAMAGE.
- CONTRACTOR SHALL GIVE THE OWNER OF PROPERTY ABUTTING THIS PROJECT, WHOSE YARDS WILL BE LOWER THAN THE NEW FINISHED GRADE ELEVATIONS AT THE RIGHT-OF-WAY LINE, AN OPPORTUNITY TO UTILIZE EXCESS EXCAVATED MATERIAL FROM THE PROJECT TO REGRADE THOSE YARDS TO DRAIN. CONTRACTOR WILL BE REQUIRED TO DUMP AND SPREAD THE EXCESS MATERIAL AS REQUIRED BY THE SPECIFICATIONS WHEN REQUESTED BY THE PROPERTY OWNER. THE CONTRACTOR SHALL BE FURNISHED A WRITTEN REQUEST FROM THE PROPERTY OWNER BEFORE ANY SUCH EXCESS MATERIAL IS DELIVERED TO SUCH PROPERTIES.

IMPROVEMENT DISTRICT DESCRIPTION

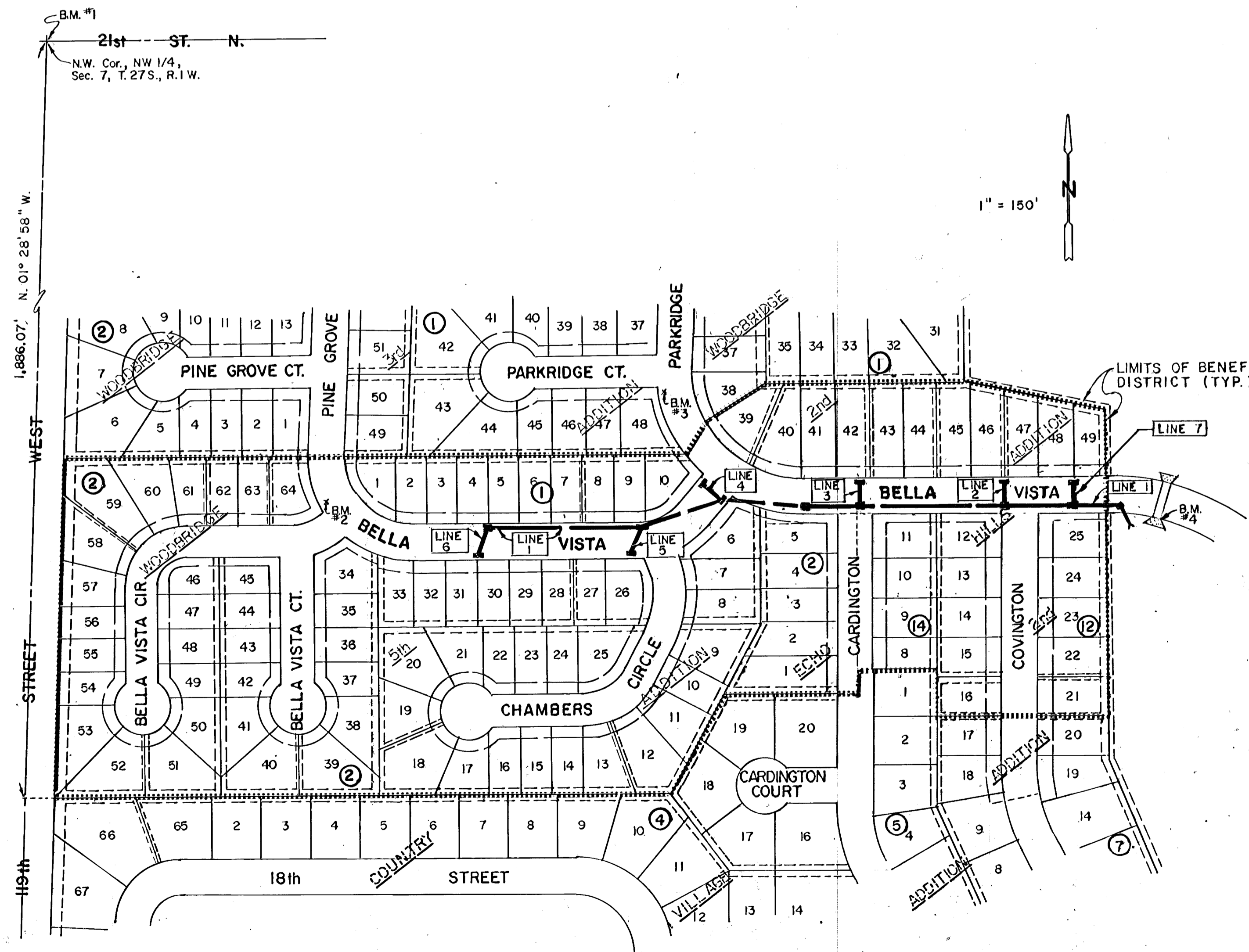
LOTS 39 THROUGH 49 INCLUSIVE, BLOCK "1" IN WOODBRIDGE 2nd ADDITION.
LOTS 1 THROUGH 10 INCLUSIVE, BLOCK "1" AND LOTS 1 THROUGH 64 INCLUSIVE, BLOCK "2" IN WOODBRIDGE 5th ADDITION.
LOTS 21 THROUGH 25 INCLUSIVE, BLOCK "12" AND LOTS 8 THROUGH 16 INCLUSIVE, BLOCK "14" IN ECHO HILLS 2nd ADDITION.

INDEX OF SHEETS

- Cover Sheet
- 2,3. S.W.S. - Line 1
4. S.W.S. - Lines 1, 6 and 7
5. S.W.S. - Lines 2, 3, 4 and 5
- 6,7. Std. Type I-A Curb Inlets (L = 6'-4" & L = 11'-4")
8. Reinforced Concrete Manhole Details
9. Woodbridge 2nd Final Plat
10. Woodbridge 5th Final Plat
11. Sunridge 2nd Final Plat

BENCHMARKS

- City Disc - 79' South and 46' East of NW. Cor., NW 1/4, Sec. 7, T. 27 S., R. 1 W. Elev. = 172.08 City Datum
- "□" on top of curb, N. end return (NW Cor.) Bella Vista and Bella Vista Circle. Elev. = 165.37 City Datum
- "□" on top of curb, S. end return (SW Cor.) Parkridge and Parkridge Court. Elev. = 160.69 City Datum
- "□" on RCBC, N. end E. Wingwall, S. side Bella Vista. Elev. = 159.74 City Datum



MOEHRING & ASSOCIATES
CONSULTING ENGINEERS
WICHITA

NOTE: COST OF RIP-RAP REMOVAL TO BE SUBSIDIARY TO OTHER ITEMS OF WORK.

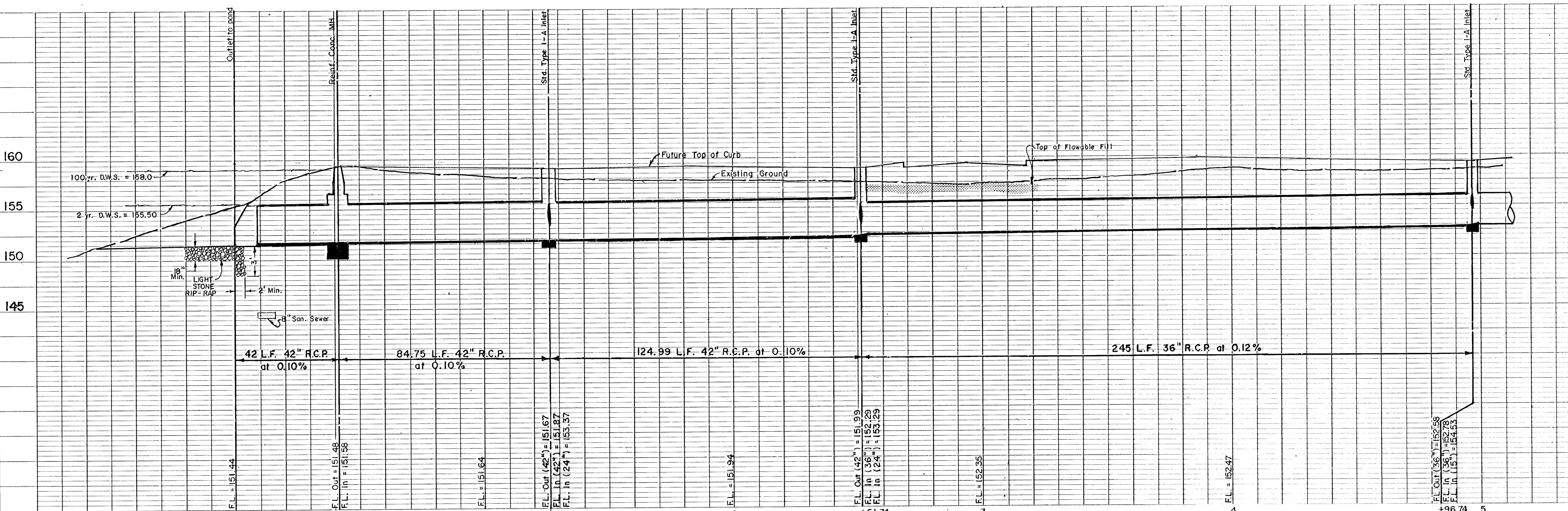
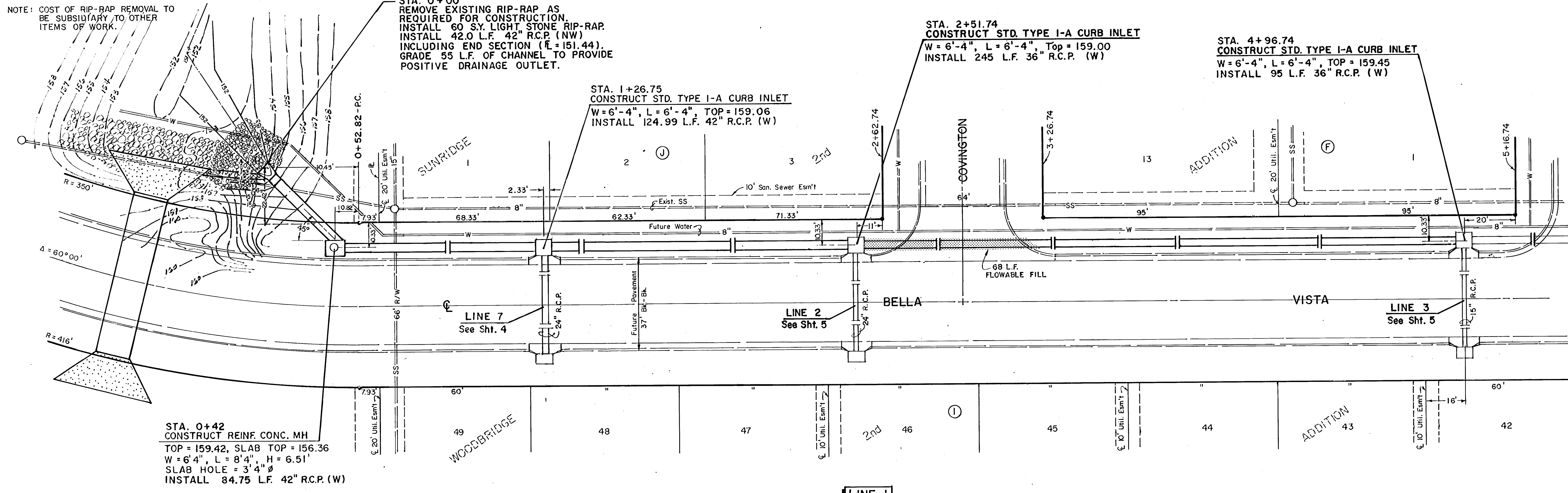
STA. 0+00
REMOVE EXISTING RIP-RAP AS REQUIRED FOR CONSTRUCTION.
INSTALL 60 SY. LIGHT STONE RIP-RAP.
INSTALL 42.0 L.F. 42" R.C.P. (NW) INCLUDING END SECTION (E = 151.44).
GRADE 55 L.F. OF CHANNEL TO PROVIDE POSITIVE DRAINAGE OUTLET.

STA. 2+51.74
CONSTRUCT STD. TYPE I-A CURB INLET
W = 6'-4", L = 6'-4", TOP = 159.00
INSTALL 245 L.F. 36" R.C.P. (W)

STA. 4+96.74
CONSTRUCT STD. TYPE I-A CURB INLET
W = 6'-4", L = 6'-4", TOP = 159.45
INSTALL 95 L.F. 36" R.C.P. (W)

STA. 1+26.75
CONSTRUCT STD. TYPE I-A CURB INLET
W = 6'-4", L = 6'-4", TOP = 159.06
INSTALL 124.99 L.F. 42" R.C.P. (W)

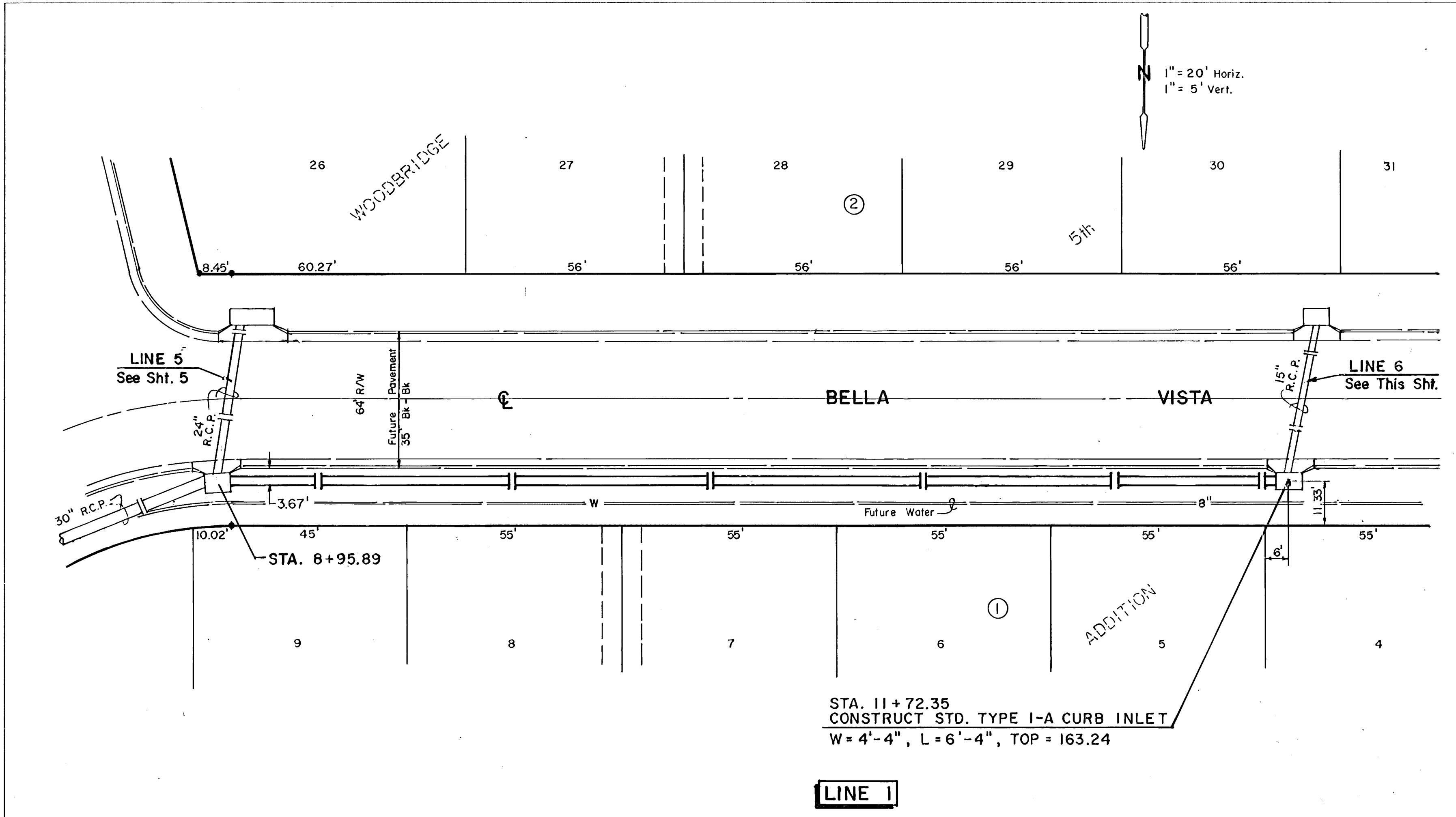
STA. 0+42
CONSTRUCT REINF. CONC. MH
TOP = 159.42, SLAB TOP = 156.36
W = 6' 4", L = 8' 4", H = 6.51'
SLAB HOLE = 3' 4" Ø
INSTALL 84.75 L.F. 42" R.C.P. (W)



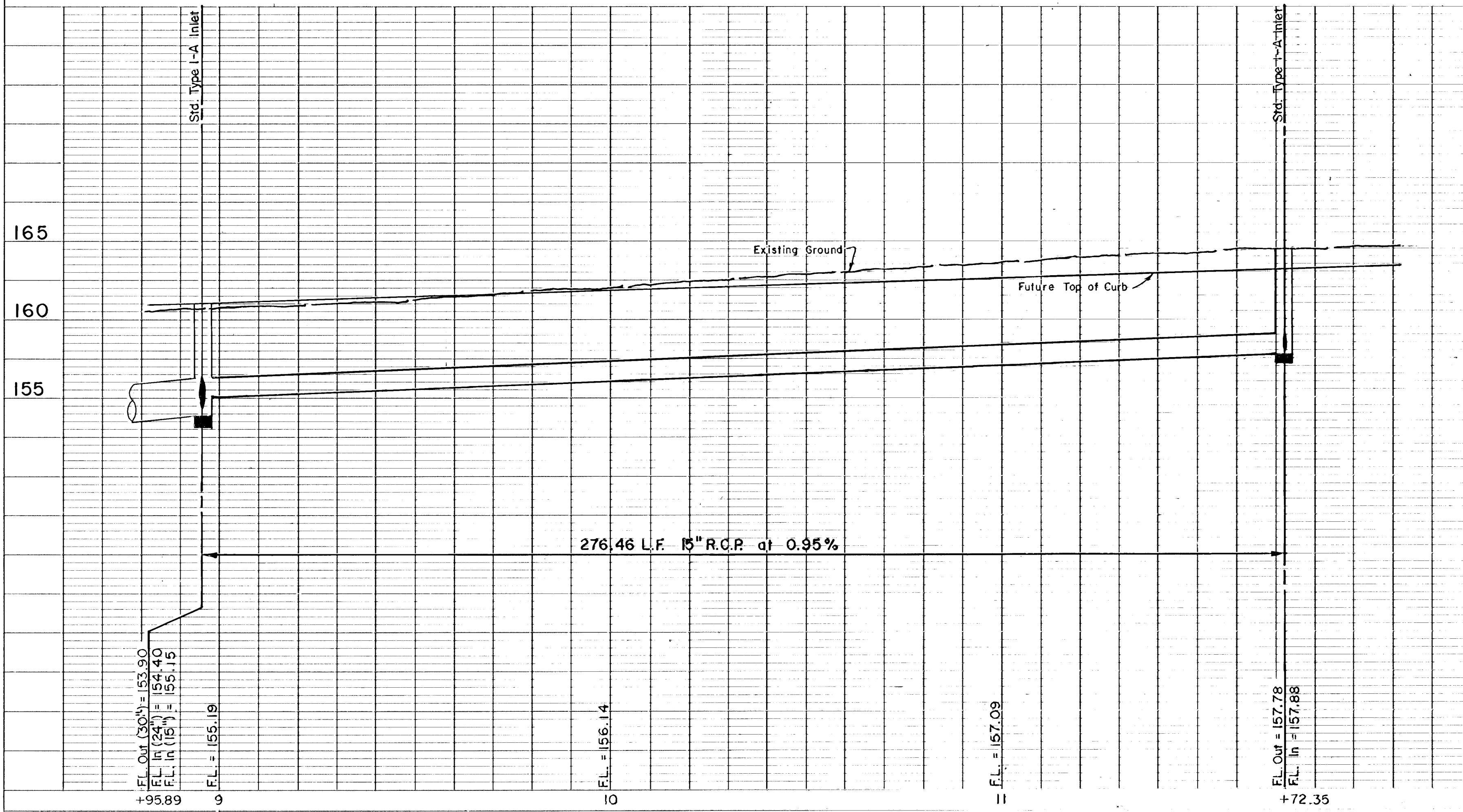
DATE: _____
BY: _____
CHECKED: _____
NO. _____

DATE: _____
BY: _____
CHECKED: _____
NO. _____

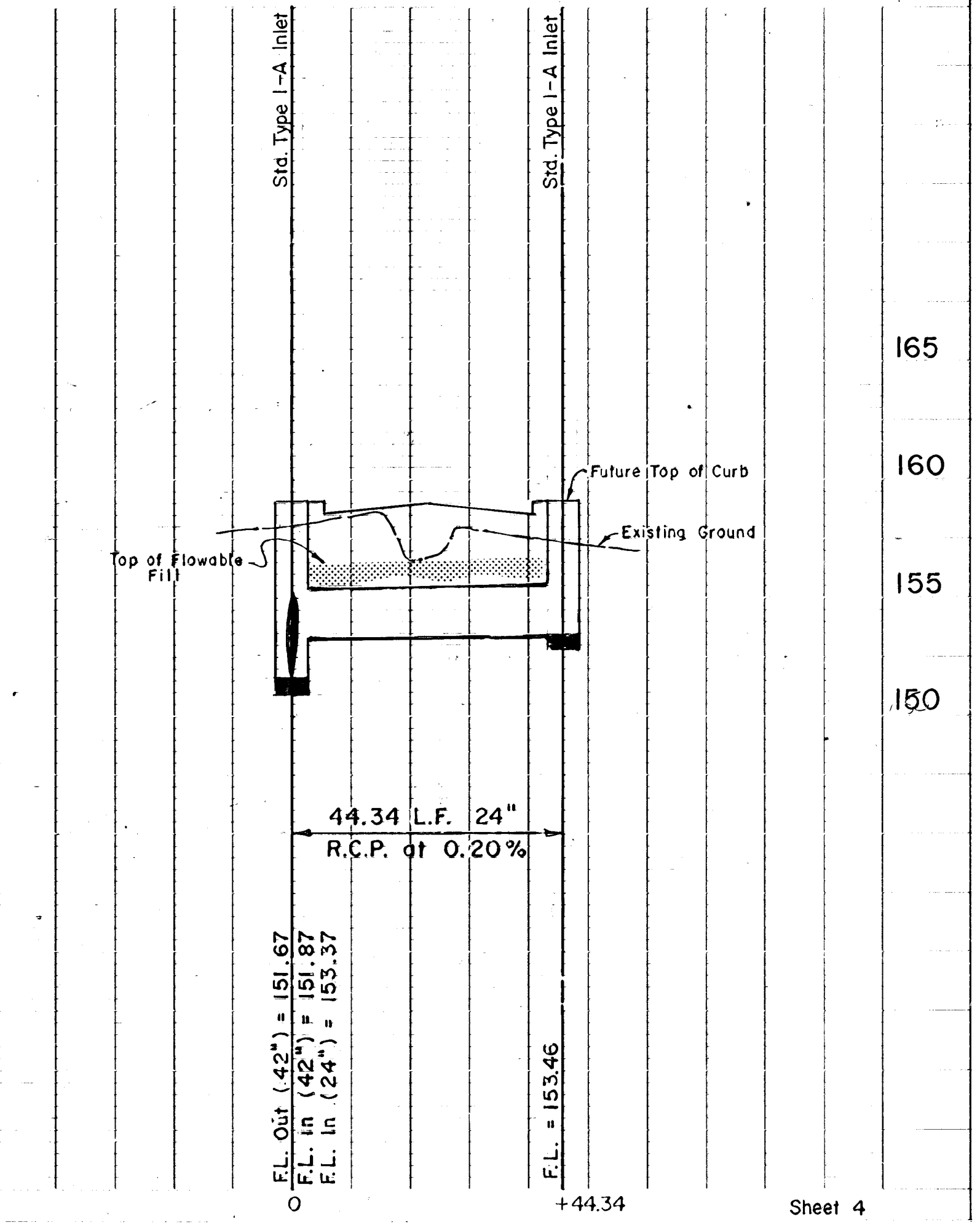
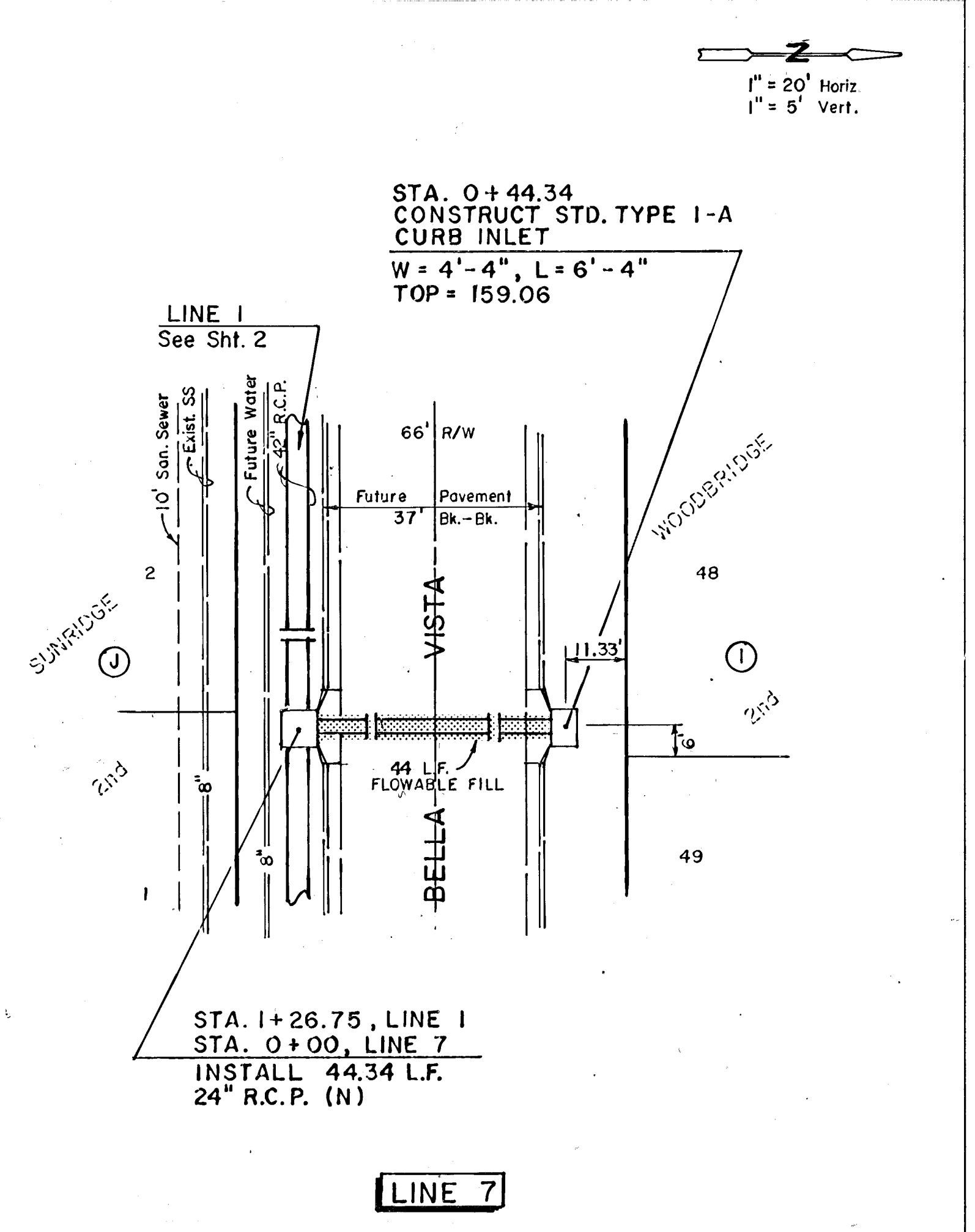
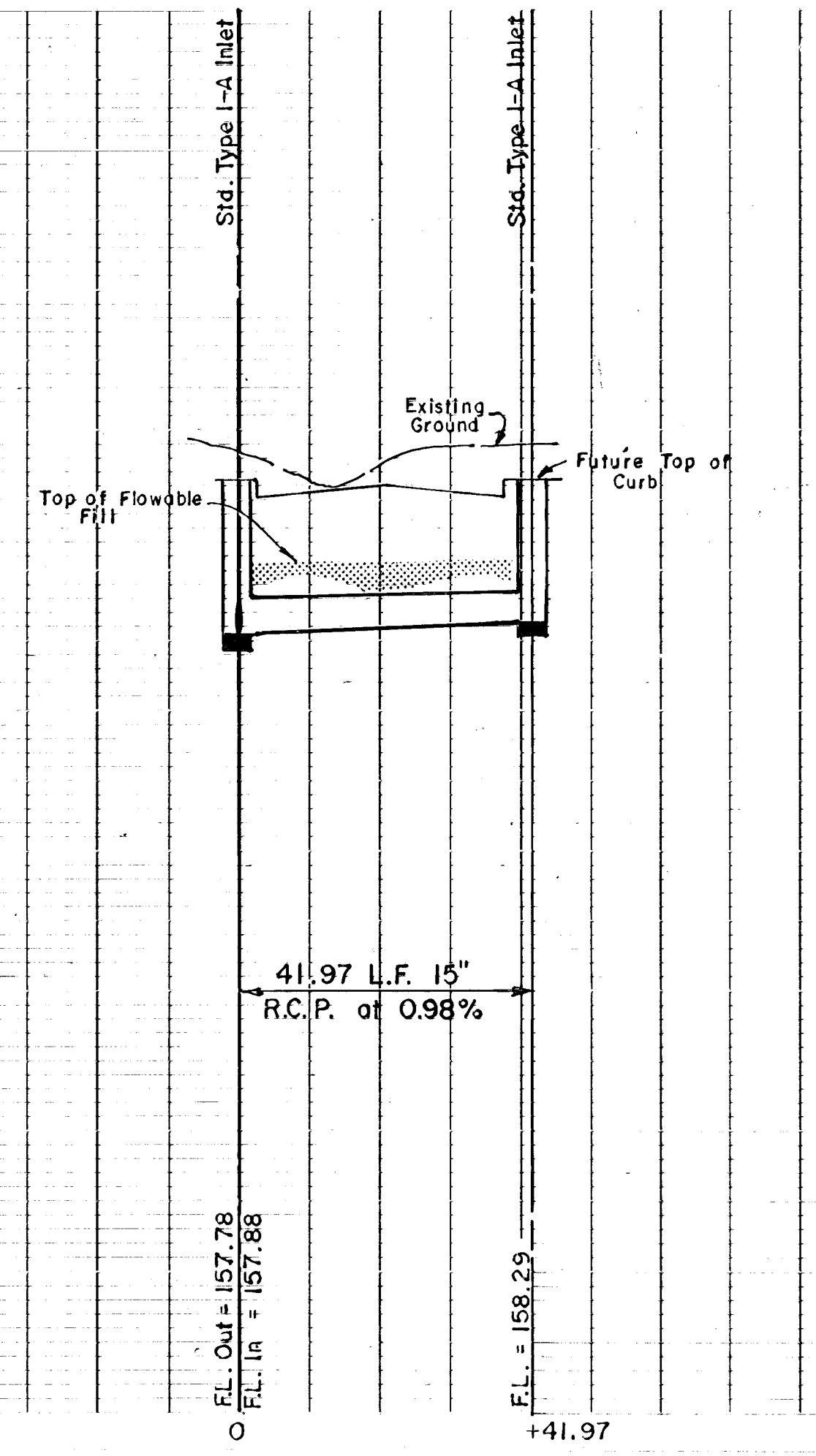
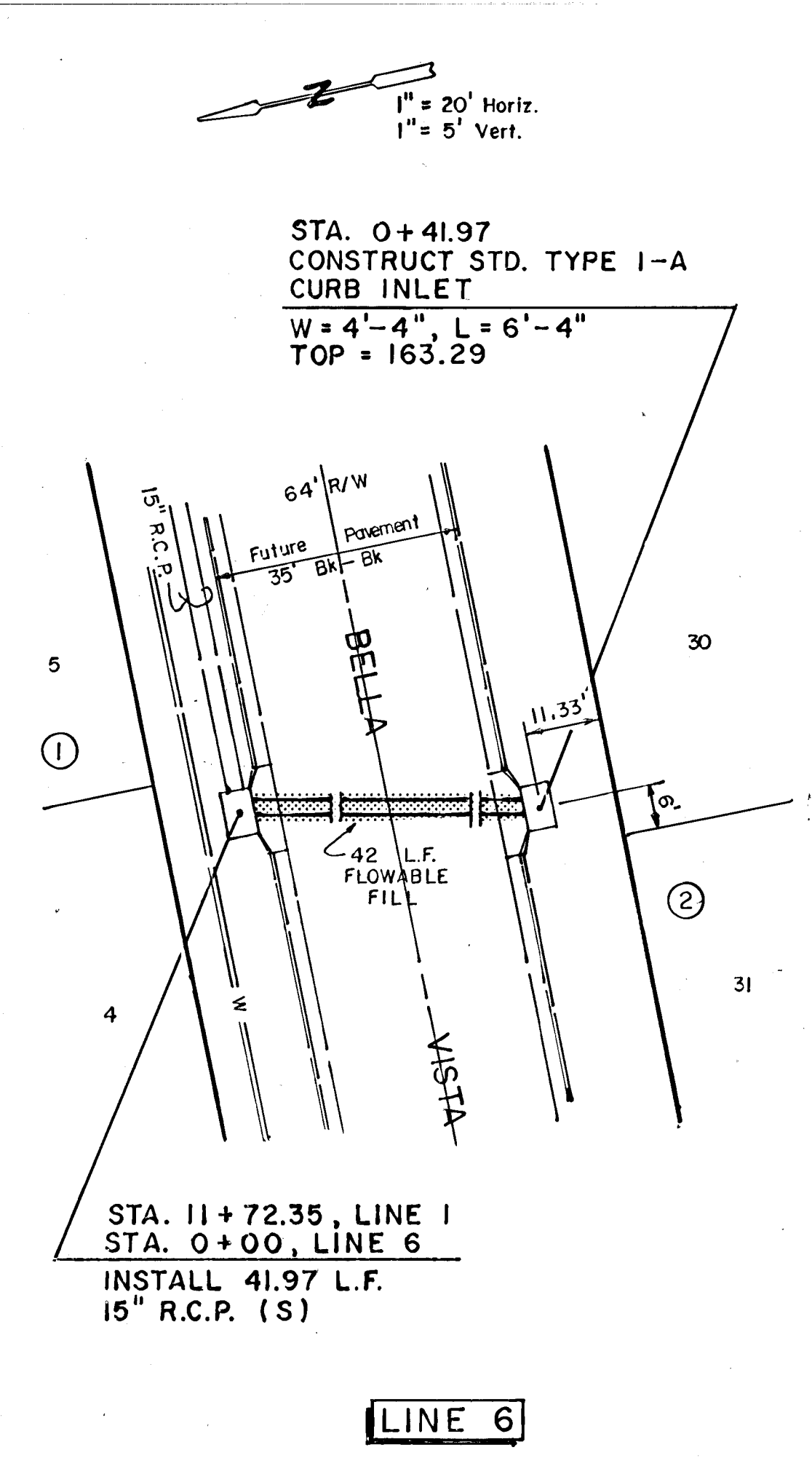
DATE	BY
APPROVED	DESIGNED
NOTED	DRAWN
NO. OF SHEETS	TOTAL SHEETS
PROJECT NO.	SHEET NO.

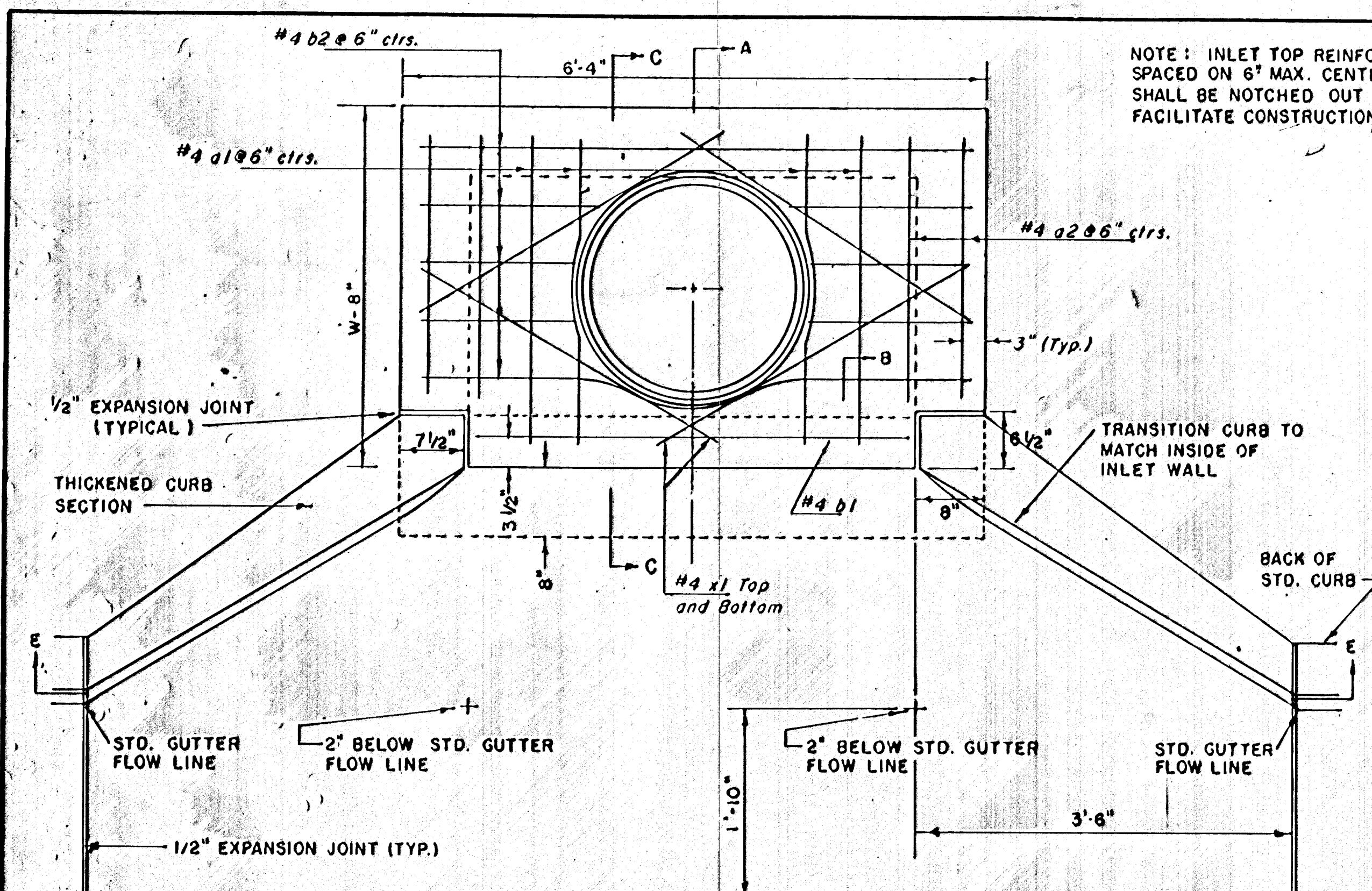


DATE	BY
APPROVED	DESIGNED
NOTED	DRAWN
NO. OF SHEETS	TOTAL SHEETS
PROJECT NO.	SHEET NO.

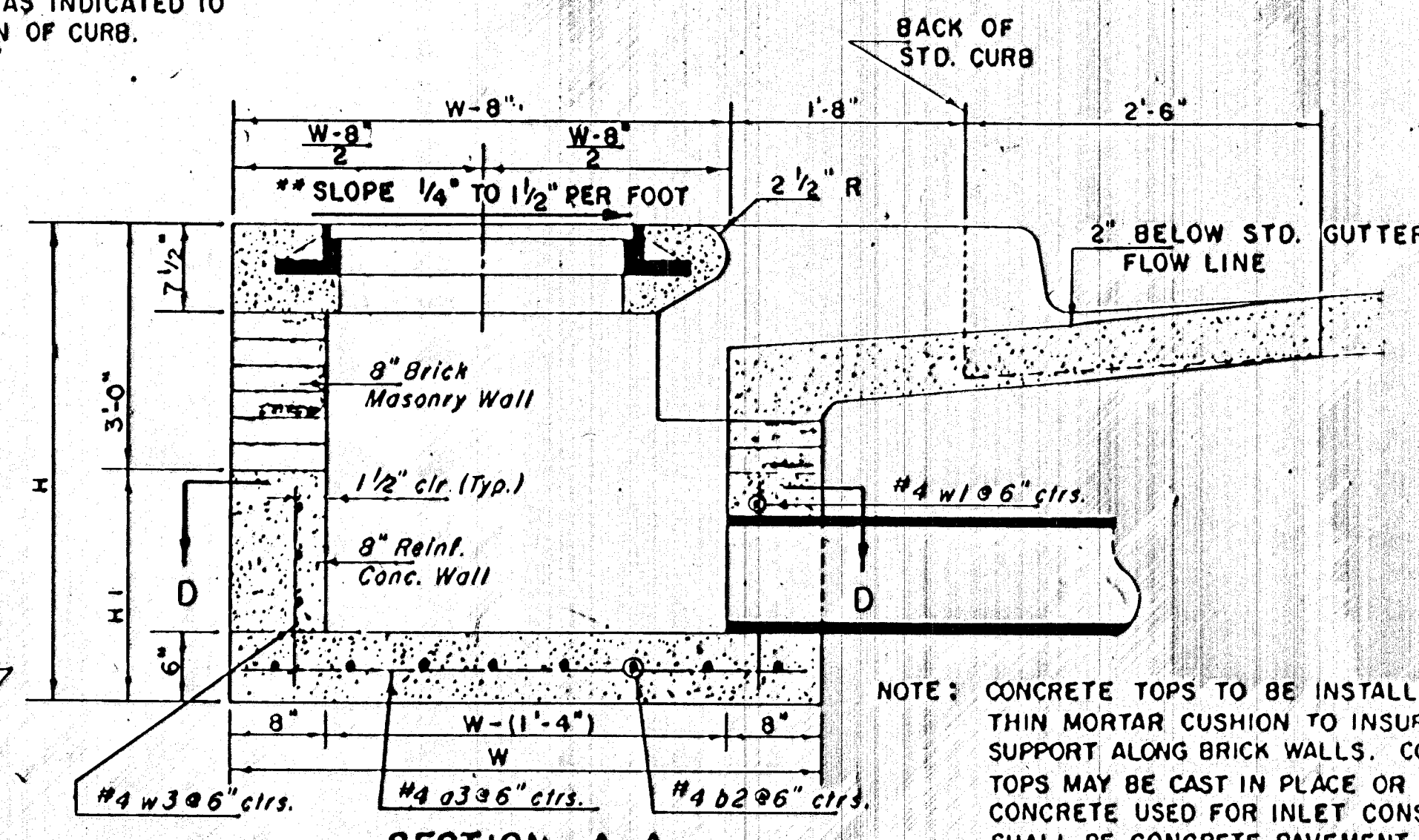


HIGHWAY FEDERAL AID SHEET
PLATE 1-SINGLE PLAN AND PROFILE FULL LINE
PUBLISHED BY THE
FEDERAL BUREAU OF SURVEY
PRINTED IN U.S.A.

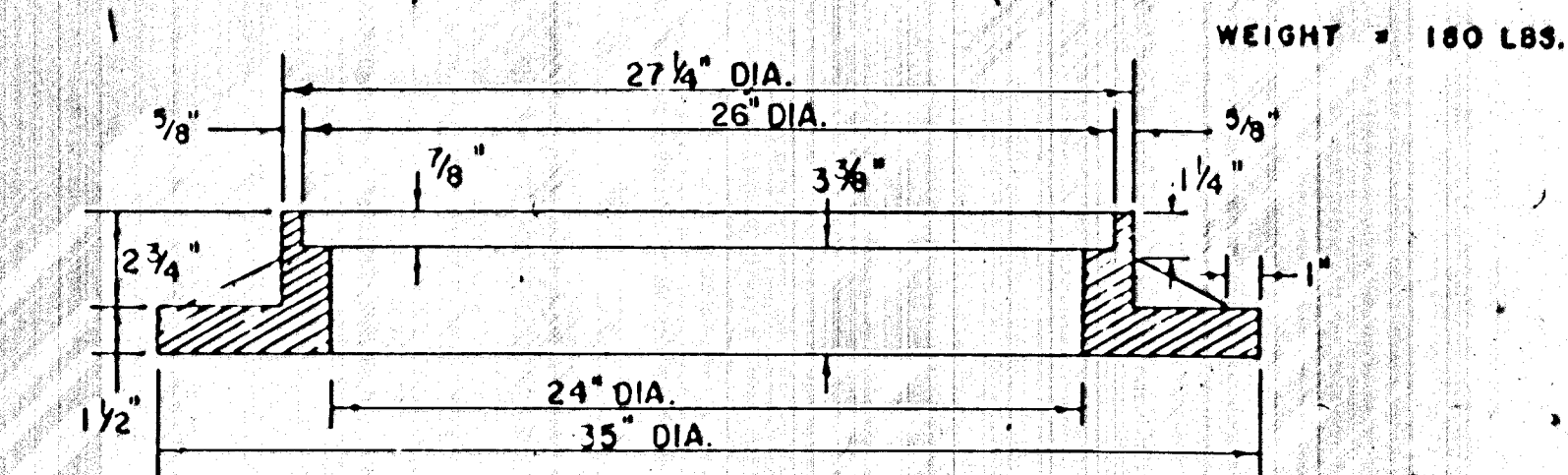
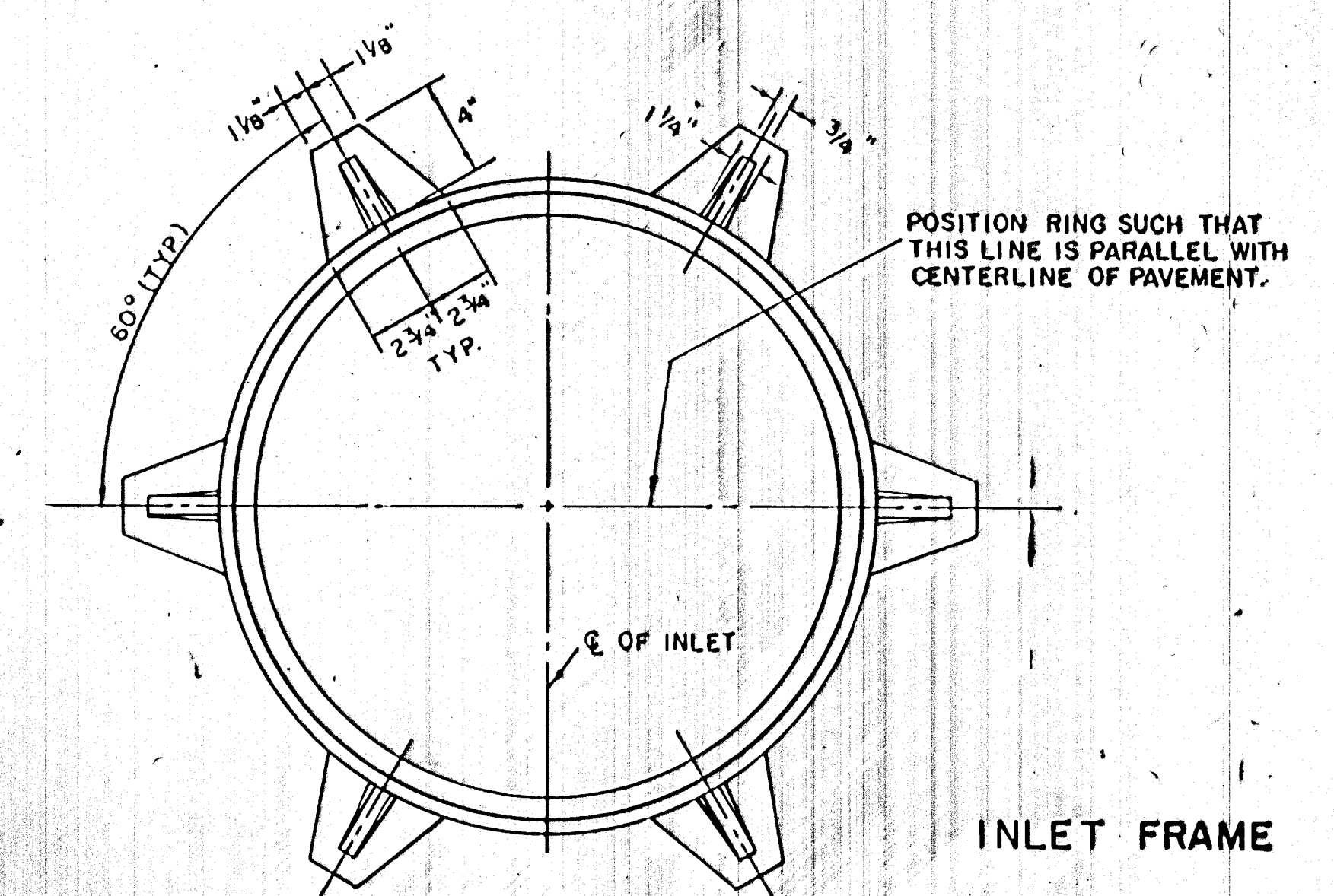




NOTE: INLET TOP REINFORCING SHALL BE SPACED ON 6" MAX. CENTERS. INLET LIDS SHALL BE NOTCHED OUT AS INDICATED TO FACILITATE CONSTRUCTION OF CURB.



NOTE: CONCRETE TOPS TO BE INSTALLED ON THIN MORTAR CUSHION TO INSURE FULL SUPPORT ALONG BRICK WALLS. CONCRETE TOPS MAY BE CAST IN PLACE OR PRECAST. CONCRETE USED FOR INLET CONSTRUCTION SHALL BE CONCRETE PAVEMENT MIX WITH AIR ENTRAINMENT.



SEE CITY OF WICHITA STANDARD MANHOLE FRAME AND COVER DETAIL SHEET FOR COVER DETAILS TO BE USED WITH INLET FRAME.

NOTE: EXPANSION JOINT ONLY IN CURB AREA WITH CONC. PAVEMENT.

PLAN

BENDING DIAGRAM

PRECAST SLAB AND FLOOR REINFORCING											
Mark	Size	W=4'-4"		W=5'-4"		W=6'-4"		W=7'-4"		W=8'-4"	
		No.	Length	No.	Length	No.	Length	No.	Length	No.	Length
a1	#4	6	6'-7"	6	8'-7"	6	10'-7"	6	12'-7"	6	14'-7"
a2	#4	4	6'-0"	4	8'-0"	4	10'-0"	4	12'-0"	4	14'-0"
a3	#4	13	4'-1"	13	5'-1"	13	6'-1"	13	7'-1"	13	8'-1"
b1	#4	1	4'-9"	1	4'-9"	1	4'-9"	1	4'-9"	1	4'-9"
b2	#4	23	6'-1"	29	6'-1"	35	6'-1"	41	6'-1"	47	6'-1"
x1	#4	8	3'-10"	8	4'-2"	8	4'-6"	8	4'-10"	8	5'-2"

WALL REINFORCING											
Mark	Size	W=4'-4"		W=5'-4"		W=6'-4"		W=7'-4"		W=8'-4"	
		No.	Length	No.	Length	No.	Length	No.	Length	No.	Length
w1	#4	1	6'-1"	1	6'-1"	1	6'-1"	1	6'-1"	1	6'-1"
w2	#4	1	4'-1"	1	5'-1"	1	6'-1"	1	7'-1"	1	8'-1"
w3	#4	32	2	36	2	40	2	44	2	48	2

* Field bend or cut Reinforcing as required for clearance.
 ① 4(HI-12"); (HI-12") Round down to nearest 0.5"
 ② HI-3"

STANDARD CURB INLET PRECAST TOPS			
W	PRECAST TOP SIZE	PIPE SIZE	CU. YD. CONC.
4' 4"	38" x 6' 4" x 7 1/2"	21" & SMALLER	0.38 ±
5' 4"	48" x 6' 4" x 7 1/2"	24" & 30"	0.51 ±
6' 4"	58" x 6' 4" x 7 1/2"	36" & 42"	0.64 ±
7' 4"	68" x 6' 4" x 7 1/2"	48" & 54"	0.77 ±
8' 4"	78" x 6' 4" x 7 1/2"	60" & 66"	0.90 ±

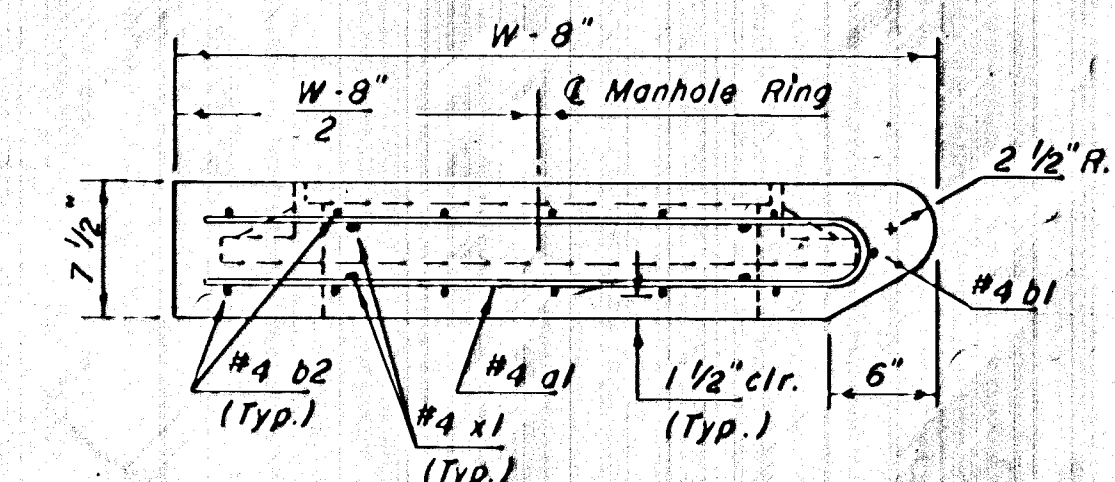
NOTE: CONTRACTOR SHALL HAVE THE OPTION OF CONSTRUCTING 8" BRICK MASONRY WALLS BETWEEN THE CONCRETE INLET BASE AND TOP ON THIS INLET WHEN W = 6'-4" AND H = 7'-0" OR LESS.

ADDITIONAL CURB AND GUTTER CONSTRUCTION NECESSARY TO CONNECT SET-BACK INLET TO PAVEMENT WILL BE PAID FOR AT THE UNIT PRICE BID FOR EACH INLET HOOKUP.

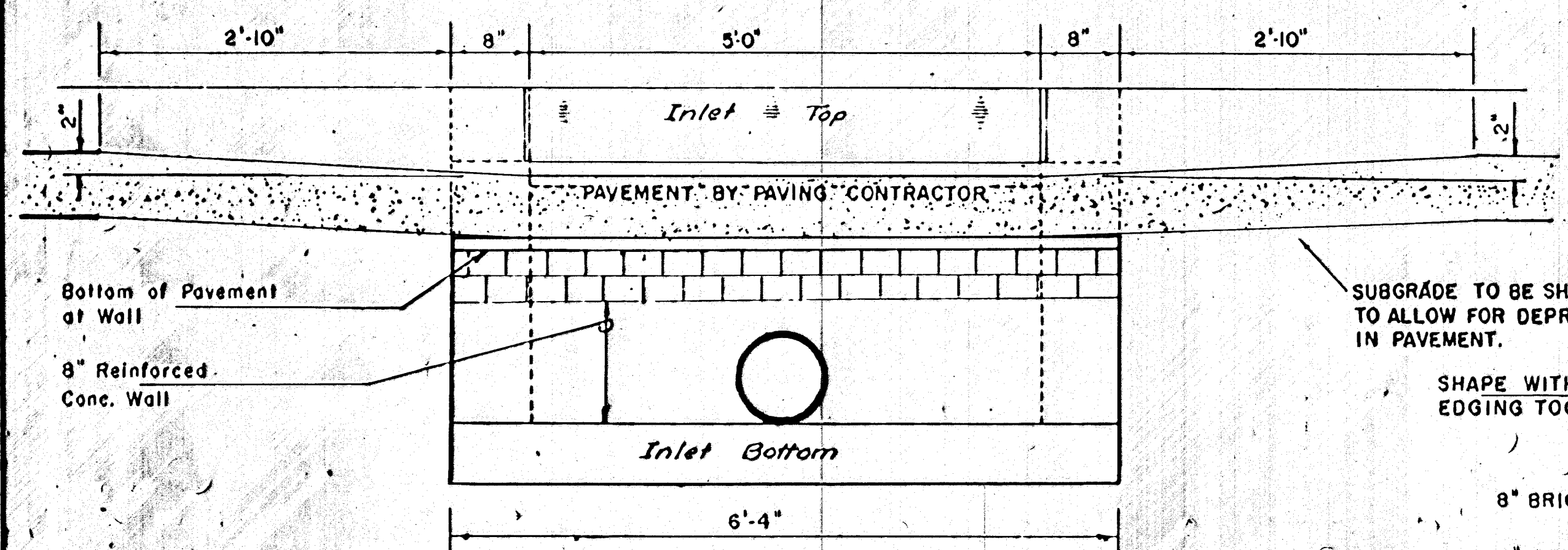
INLET INVERT SHALL BE SHAPED WITH 8 SACK SAND MIX CONCRETE TO CREATE FLOW CHANNELS AND TO INCREASE HYDRAULIC EFFICIENCY SUCH THAT THE INLET WILL BE SELF CLEANING BETWEEN ALL INLET AND/OR OUTLET PIPES.

THE ENDS OF ALL PIPES INSTALLED IN INLETS SHALL BE CUT OFF FLUSH WITH THE INSIDE FACE OF THE INLET WALL.

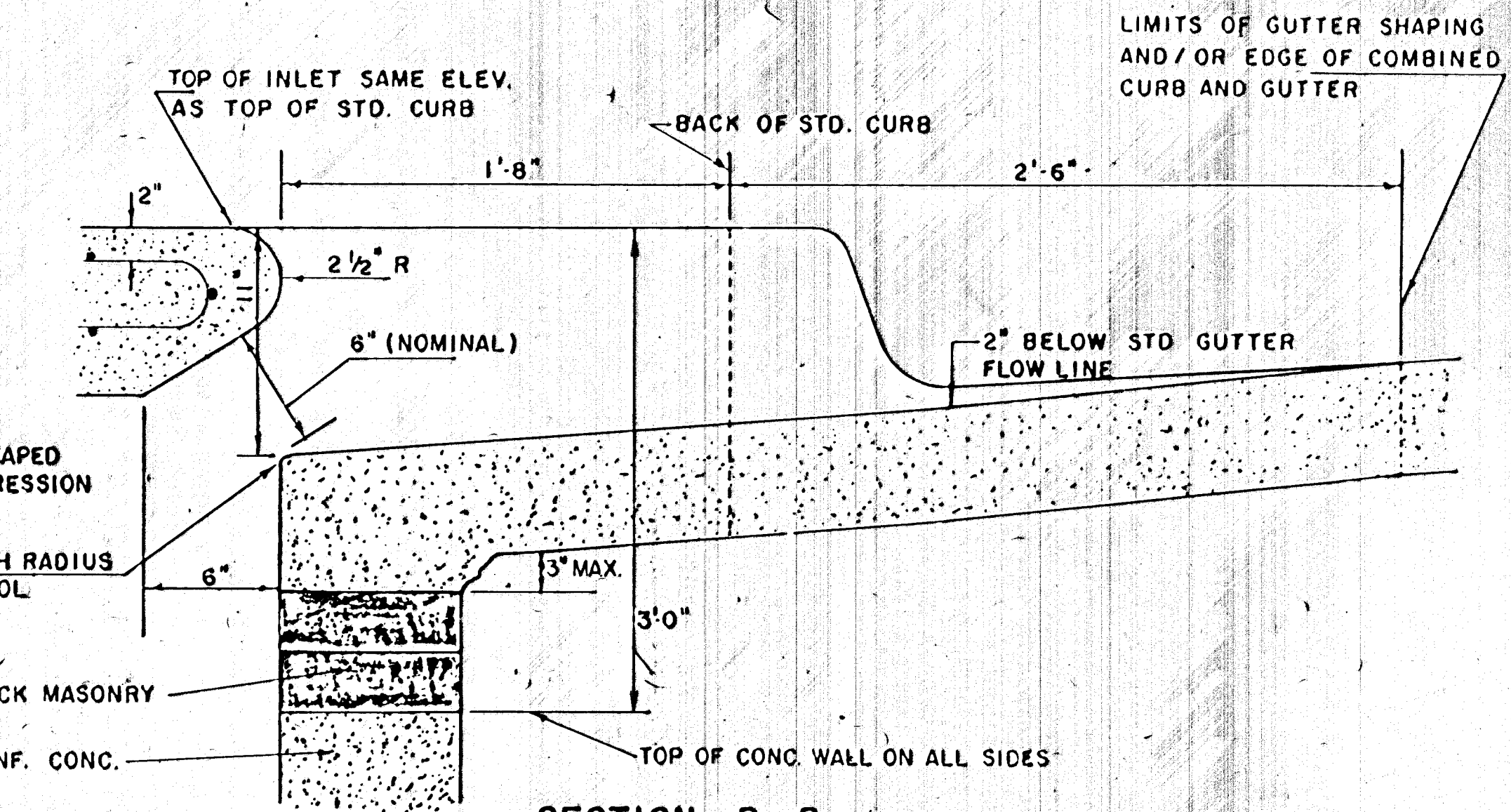
**NOTE: Slope of Inlet Tops to match Sidewalk or Parking Slopes within Limits indicated.



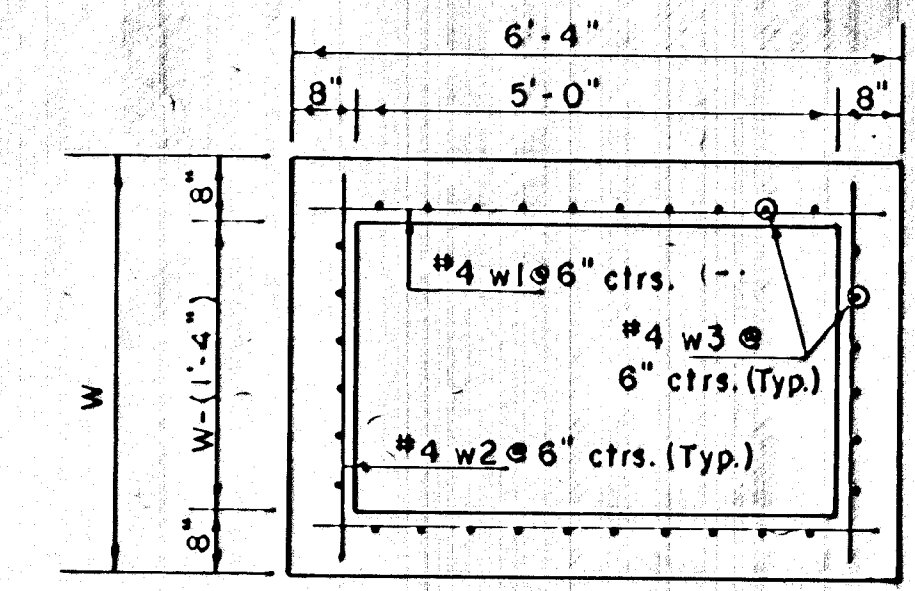
SECTION C-C



SECTION E-E



SECTION B-B



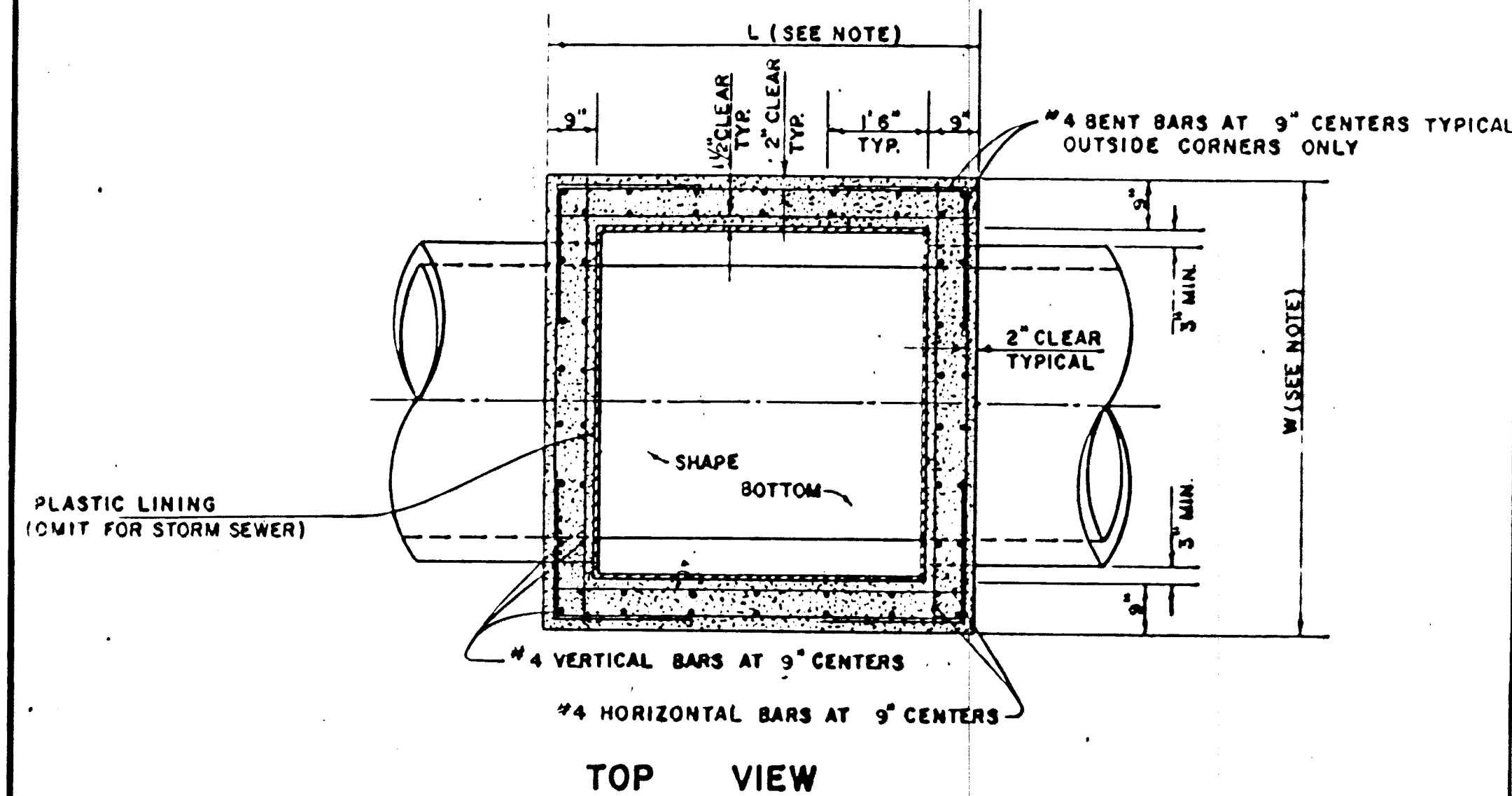
SECTION D-D

REVISED 11-30-1988
 REVISED 12-21-1984
 Revised 2-16-1989

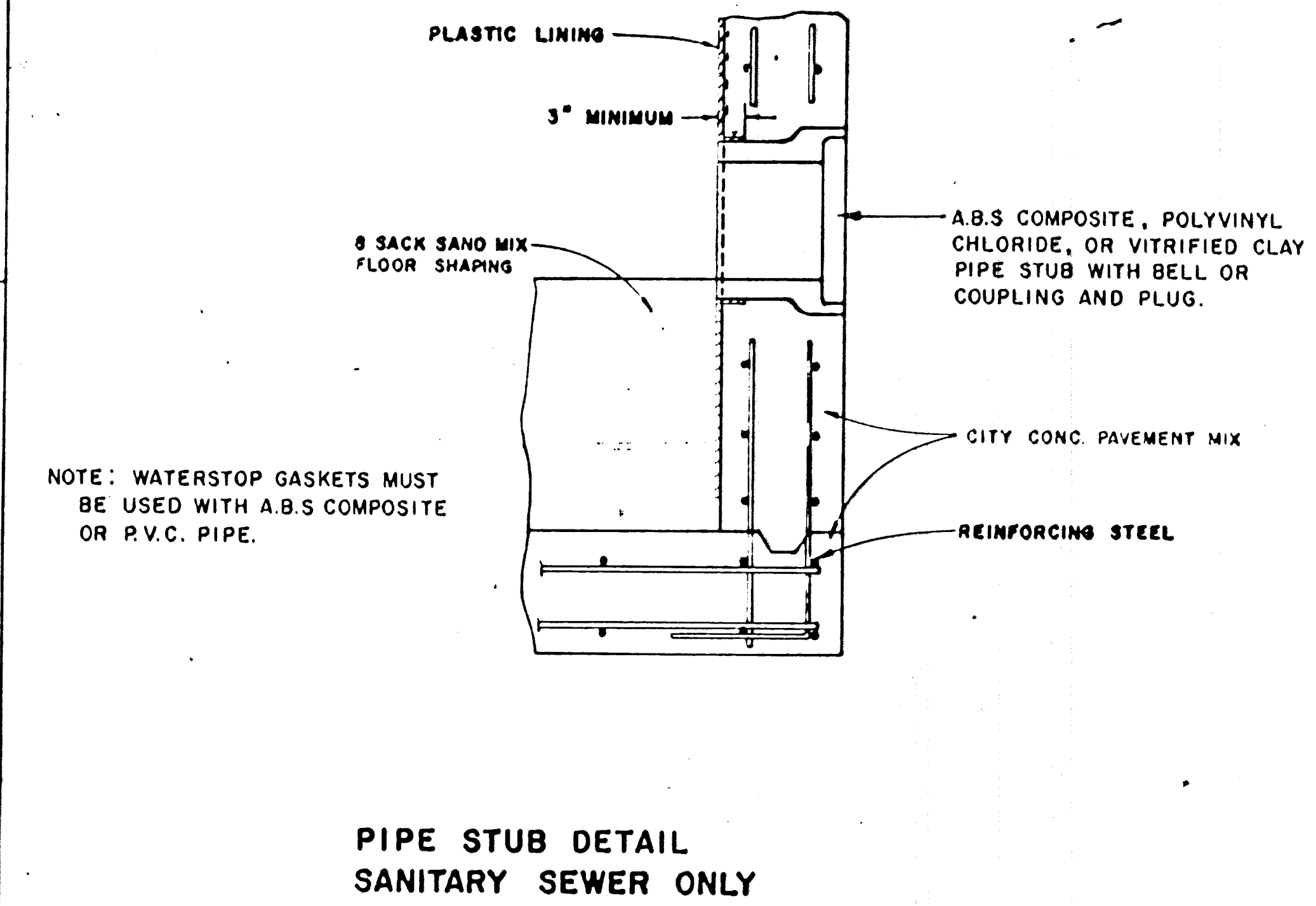
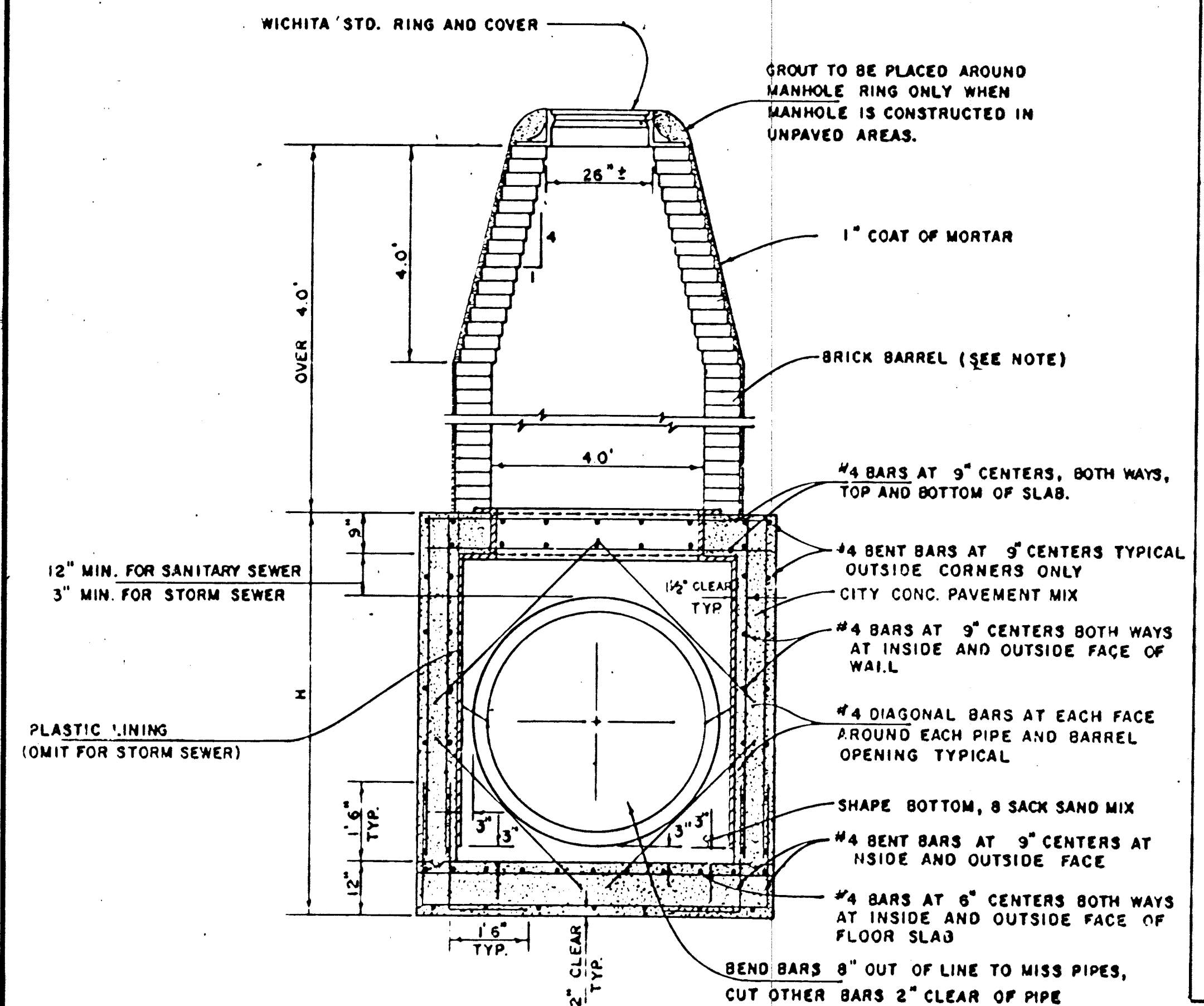
DETAIL STANDARD TYPE IA CURB INLET
 CITY OF WICHITA, KANSAS
 INLET OPENING = 6" x 5' 0"

JUNE 1984

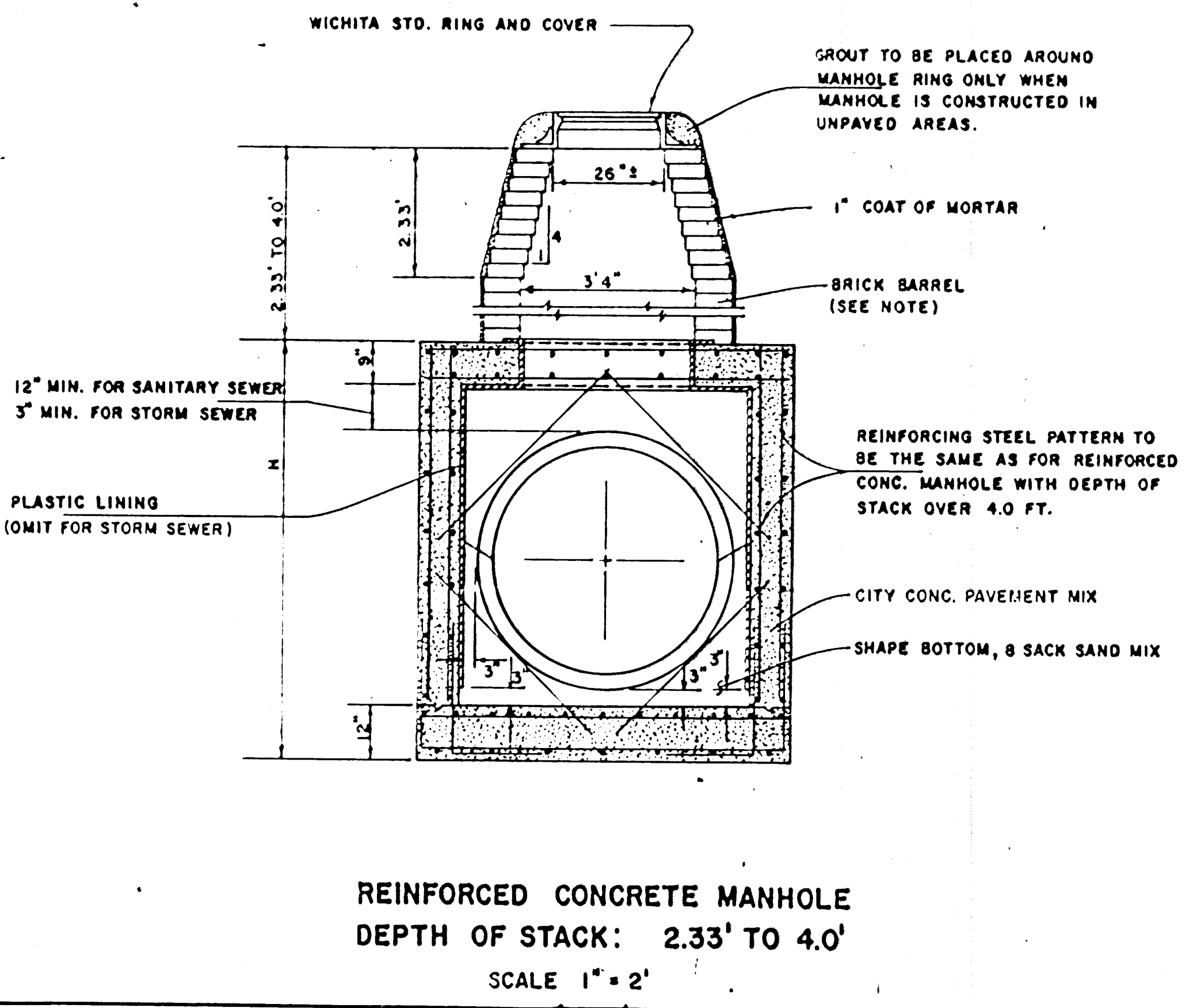
Sheet 6



REINFORCED CONCRETE MANHOLE
DEPTH OF STACK: OVER 4.0'
 SCALE 1" = 2'

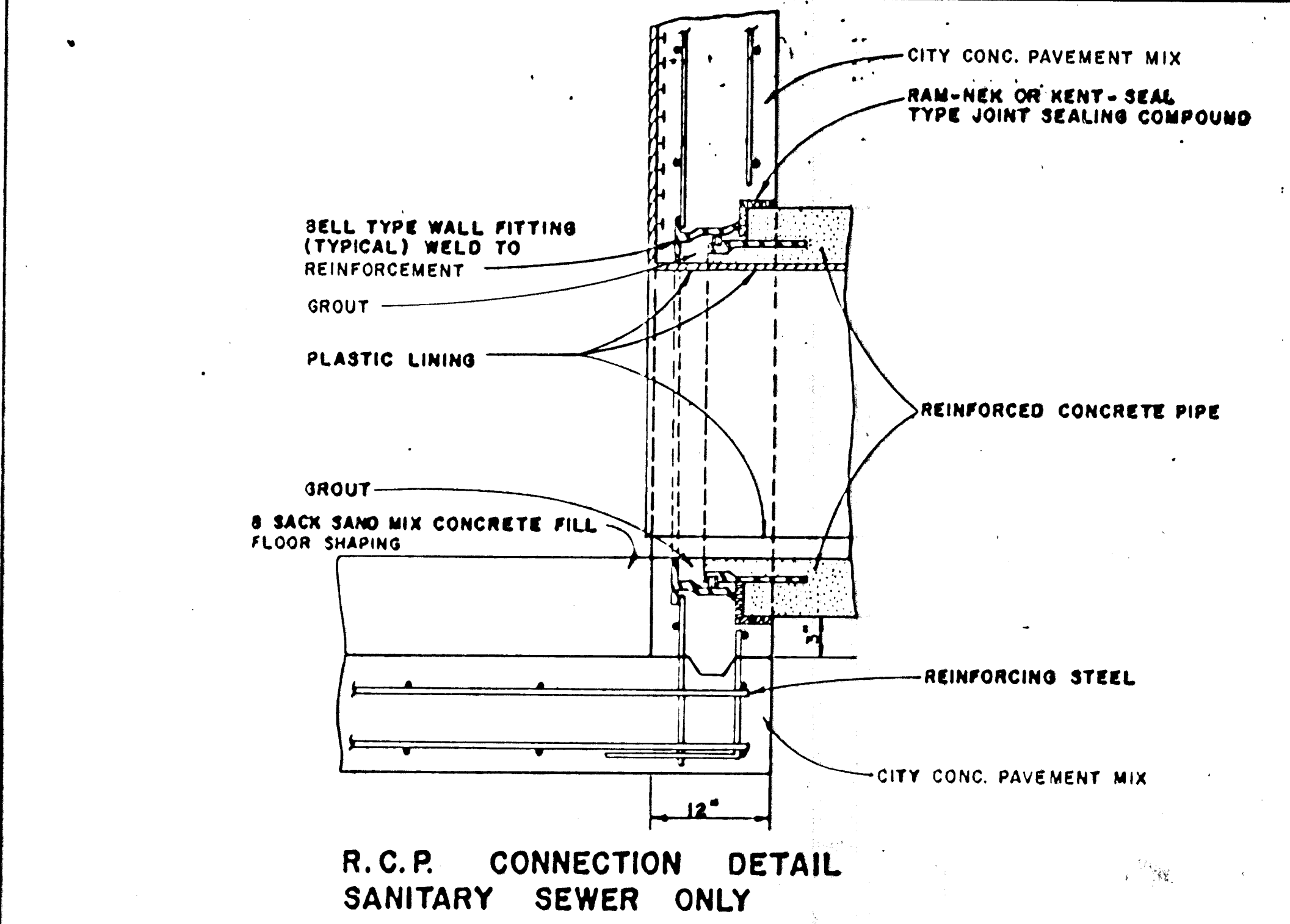


PIPE STUB DETAIL
SANITARY SEWER ONLY

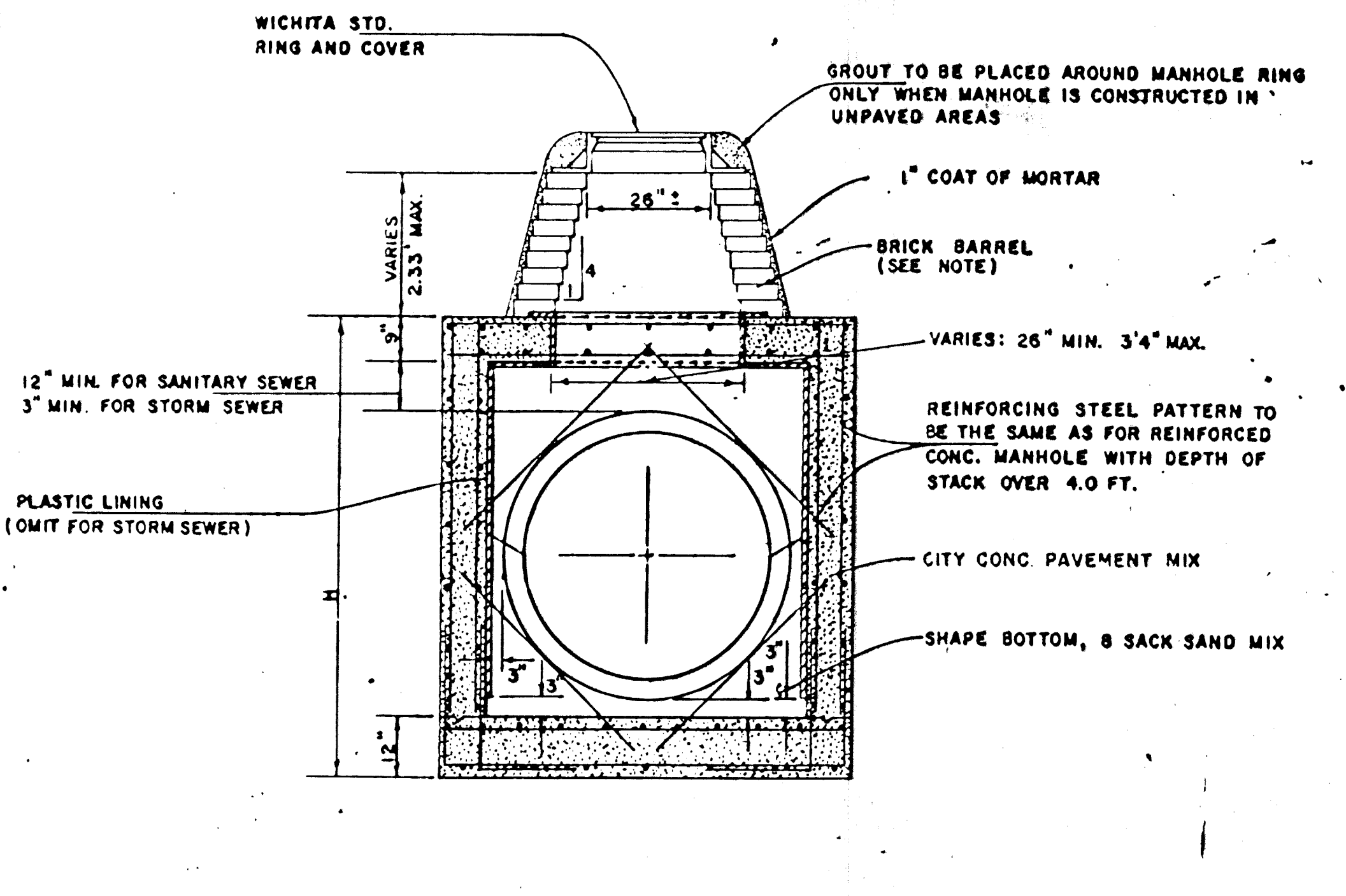


REINFORCED CONCRETE MANHOLE
DEPTH OF STACK: 2.33' TO 4.0'
 SCALE 1" = 2'

NOTE:
 BRICK BARRELS LESS THEN 16' DEEP SHALL HAVE 8" WALLS EXCEPT WHEN LOCATED WITHIN PUBLIC STREET OR ALLEY PAVEMENT THEN THE WALL SHALL BE 12". BRICK BARRELS MORE THEN 16' DEEP SHALL HAVE 12" WALLS. THE "L" AND "W" DIMENSIONS SHALL BE A MINIMUM OF 5'6" FOR BRICK BARRELS WITH 8" WALLS AND 6'2" FOR BRICK BARRELS WITH 12" WALLS WHEN THE BRICK BARRELS ARE OVER 4 FT. IN HEIGHT. COMPLETED MANHOLE SHALL BE WITHOUT LEAKS AND WATERTIGHT.

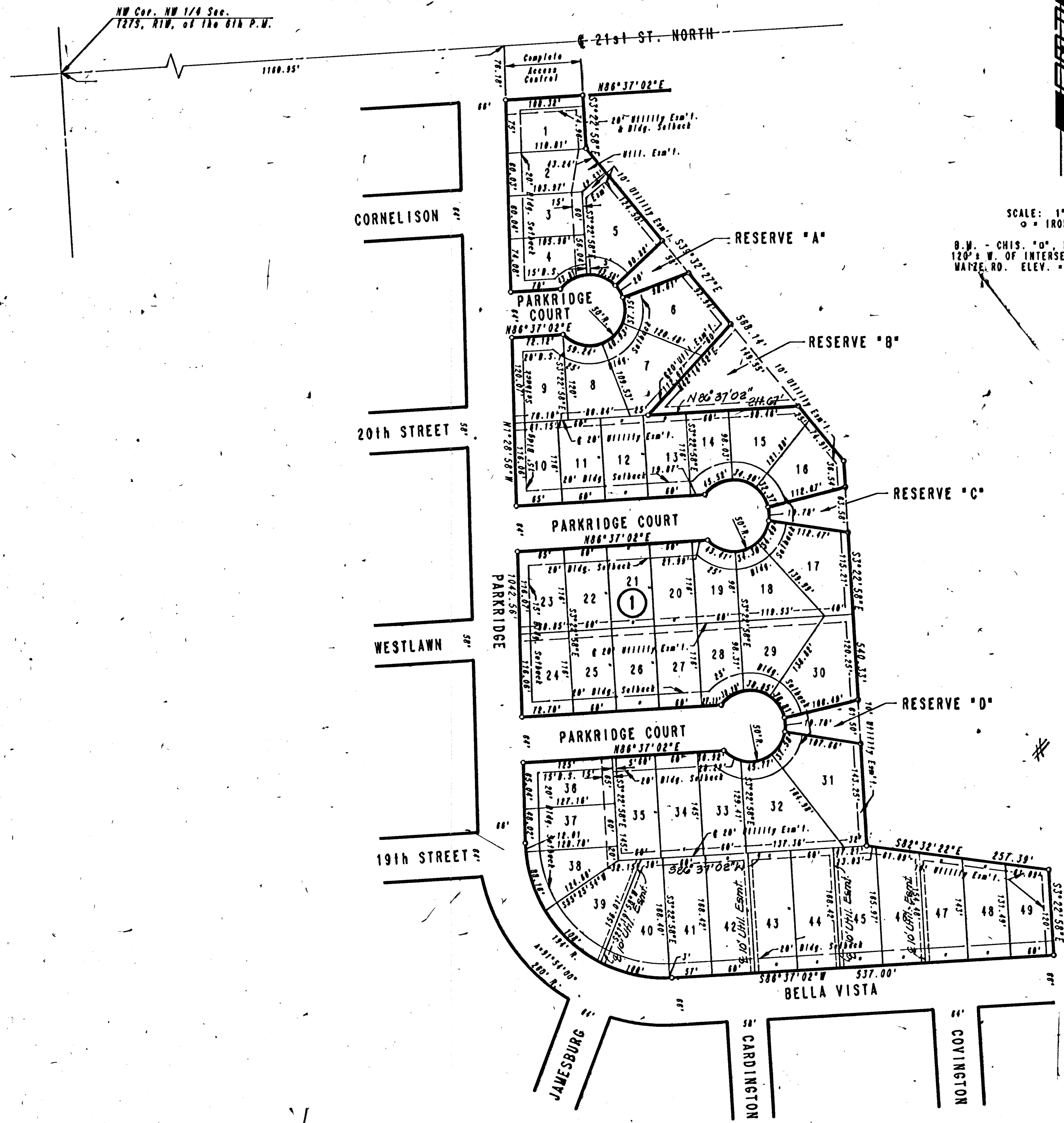


R.C.P. CONNECTION DETAIL
SANITARY SEWER ONLY



REINFORCED CONCRETE MANHOLE
DEPTH OF STACK: 0' TO 2.33'
 SCALE 1" = 2'

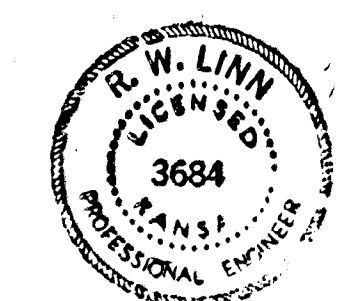
WOODBIDGE 2ND ADDITION TO WICHITA, SEDGWICK COUNTY, KANSAS



SCALE: 1" = 100'
 ○ = IRON SET
 B.M. - CHIS. "O", NE COR. HEADWALL
 120' W. OF INTERSECTION 21ST ST. &
 WATFE. RD. ELEV. = 1351.065 M.S.L.

STATE OF KANSAS }
 COUNTY OF SEDGWICK }
 I, R.W. LINN, A PROFESSIONAL ENGINEER IN AFORESAID STATE AND COUNTY DO HEREBY CERTIFY THAT ON THIS 14th DAY OF October, 1985, I HAVE CAUSED TO BE SURVEYED AND PLATTED WOODBRIDGE 2ND ADDITION TO WICHITA, SEDGWICK COUNTY, KANSAS, INTO LOTS, A BLOCK, AND RESERVES, THE SAME BEING A REPLAT OF AND DESCRIBED AS: LOTS 24 TO 39 INCLUSIVE, IN BLOCK 2 AND THOSE PORTIONS OF RESERVE "A" IN SAID BLOCK 2 LYING BETWEEN THE EXTENSION OF THE EASTERLY LINE BETWEEN LOTS 27 AND 28, AND 28 AND 35, ALSO BETWEEN THE EXTENSION OF THE EAST LINE BETWEEN LOTS 35 AND 36, AND LOTS 45 AND 46, ALL IN ECHO HILLS 2ND ADDITION TO WICHITA SEDGWICK COUNTY, KANSAS.

R.W. Linn
 R.W. LINN, P.E. LIC. NO. 3684



KNOW ALL MEN BY THESE PRESENTS THAT WE, THE UNDERSIGNED PROPERTY OWNERS OF THE LAND AS ABOVE SET FORTH IN THE ENGINEER'S CERTIFICATE, HAVE CAUSED THE LAND TO BE SURVEYED AND PLATTED INTO LOTS, A BLOCK, AND RESERVES, THE SAME TO BE KNOWN AS WOODBRIDGE 2ND ADDITION TO WICHITA, SEDGWICK COUNTY, KANSAS. EASEMENTS AS INDICATED FOR THE CONSTRUCTION AND MAINTENANCE OF PUBLIC UTILITIES ARE HEREBY GRANTED. THE RESERVES "A", "B", "C" AND "D" AS INDICATED, SHALL BE RESERVED FOR DRAINAGE, UTILITIES, LANDSCAPING, AND RECREATIONAL FACILITIES IN ACCORDANCE WITH THE RESTRICTIVE COVENANTS ESTABLISHED BY THE DECLARATION OF LANDOWNERS' ASSOCIATION AGREEMENT, AND SHALL BE OWNED AND MAINTAINED BY THE WOODBRIDGE 2ND ADDITION HOMEOWNERS' ASSOCIATION. ALL ADJUTERS' RIGHTS OF ACCESS TO AND FROM 21ST STREET NORTH OVER AND ACROSS THE NORTH LINE OF LOT 1 ARE HEREBY GRANTED TO THE CITY OF WICHITA. ALL PORTIONS OF ECHO HILLS 2ND ADDITION TO WICHITA, SEDGWICK COUNTY, KANSAS, WITHIN THE ABOVE DESCRIBED TRACT OF LAND ARE HEREBY VACATED AND REPLATTED BY VIRTUE OF KSA 12-512(b) AMENDED. MINIMUM PAD ELEVATIONS AS FOLLOWS:
 LOTS 1 THROUGH 5 MINIMUM PAD ELEVATION 1349.0 MSL
 LOTS 6 THROUGH 16 MINIMUM PAD ELEVATION 1348.5 MSL

INLAND INVESTMENT CO., INC.
Larry A. Chambers PRESIDENT
 LARRY A. CHAMBERS

THIS PLAT HAS BEEN SUBMITTED TO AND APPROVED BY THE WICHITA-SEGWICK COUNTY METROPOLITAN AREA PLANNING COMMISSION, WICHITA, KANSAS. DATED THIS 19th DAY OF SEPTEMBER, 1985.

James O. Wilson CHAIRMAN
 JAMES O. WILSON
Michael E. Lindelof SECRETARY
 MICHAEL E. LINDELOF

THIS PLAT APPROVED AND ALL DEDICATIONS SHOWN HEREON ARE ACCEPTED BY THE CITY COMMISSION OF THE CITY OF WICHITA, KANSAS. DATED THIS 12th DAY OF Nov., 1985.

Robert C. Brown MAYOR
 ROBERT C. BROWN
Donald C. Gisick CITY CLERK
 DONALD C. GISICK

ENTERED ON TRANSFER RECORD THIS 26 DAY OF Nov., 1985.

Don Wright COUNTY CLERK
 DON WRIGHT

THIS IS TO CERTIFY THAT THIS INSTRUMENT WAS FILED FOR RECORD IN THE REGISTER OF DEEDS OFFICE AT 11:00 A.M., ON THIS 26th DAY OF November, 1985.

Pat Kettler REGISTER OF DEEDS
 PAT KETTLER
Ed Resa DEPUTY
 ED RESA

STATE OF KANSAS }
 COUNTY OF SEDGWICK }
 BE IT REMEMBERED THAT ON THIS 15th DAY OF October, 1985, BEFORE ME, A NOTARY PUBLIC IN AFORESAID STATE AND COUNTY, CAME LARRY A. CHAMBERS, PRESIDENT OF INLAND INVESTMENT CO., INC., TO ME PERSONALLY KNOWN TO BE THE SAME PERSON WHO EXECUTED THE FOREGOING INSTRUMENT OF WRITING AND DULY ACKNOWLEDGE THE EXECUTION OF SAME, FOR AND ON BEHALF AND AS THE VOLUNTARY ACT AND DEED OF SAID COMPANY. IN TESTIMONY WHEREOF I HAVE HEREUNTO SET MY HAND AND AFFIXED BY NOTARIAL SEAL THE DAY AND YEAR ABOVE WRITTEN.

Janina L. Kessler NOTARY PUBLIC
 MY COMMISSION EXPIRES 11/30/88

JANINA L. KESSLER
 NOTARY PUBLIC
 STATE OF KANSAS
 My Appl. Exp. 11/30/88

WE THE MELLON BANK, N.A., PITTSBURG, PA., HOLDER OF A MORTGAGE ON THE ABOVE DESCRIBED PROPERTY, DO HEREBY CONSENT TO THE PLATTING OF WOODBRIDGE 2ND ADDITION TO WICHITA, SEDGWICK COUNTY, KANSAS.

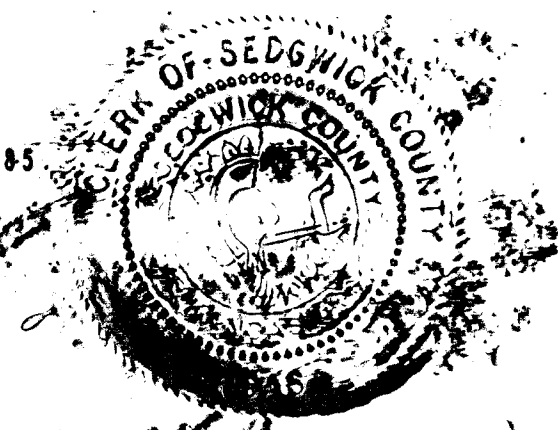
James G. Carmel III
 VICE PRESIDENT *James G. Carmel III*

STATE OF KANSAS }
 COUNTY OF SEDGWICK }

BE IT REMEMBERED THAT ON THIS 17th DAY OF October, 1985, BEFORE ME, A NOTARY PUBLIC IN AFORESAID STATE AND COUNTY, CAME *James G. Carmel III* OF THE MELLON BANK, N.A., PITTSBURG, PA., TO ME PERSONALLY KNOWN TO BE THE SAME PERSON WHO EXECUTED THE FOREGOING INSTRUMENT OF WRITING AND DULY ACKNOWLEDGE THE EXECUTION OF SAME FOR AND ON BEHALF AND AS THE VOLUNTARY ACT AND DEED OF SAID BANK. IN TESTIMONY WHEREOF I HAVE HEREUNTO SET MY HAND AND AFFIXED BY NOTARIAL SEAL THE DAY AND YEAR ABOVE WRITTEN.

Janina L. Kessler NOTARY PUBLIC
 MY COMMISSION EXPIRES 11/30/88

JANINA L. KESSLER
 NOTARY PUBLIC
 STATE OF KANSAS
 My Appl. Exp. 11/30/88



Restrictive Covenant F 764 B 425
Vacation Order F 942 B 1172
Vacation Order F 878 B 876
 (Att 36; Bk 1)

SUNRIDGE 2ND ADDITION

WICHITA, SEDGWICK COUNTY, KANSAS

