

PAVING AND STORM WATER SEWER IN

# COMOTARA INDUSTRIAL PARK FOURTH ADDITION & INDUSTRIAL AIR CENTER ADDITION

AN ADDITION TO THE CITY OF WICHITA  
SEDGWICK COUNTY, KANSAS  
MICHAEL E. LINDEBAK, CITY ENGINEER

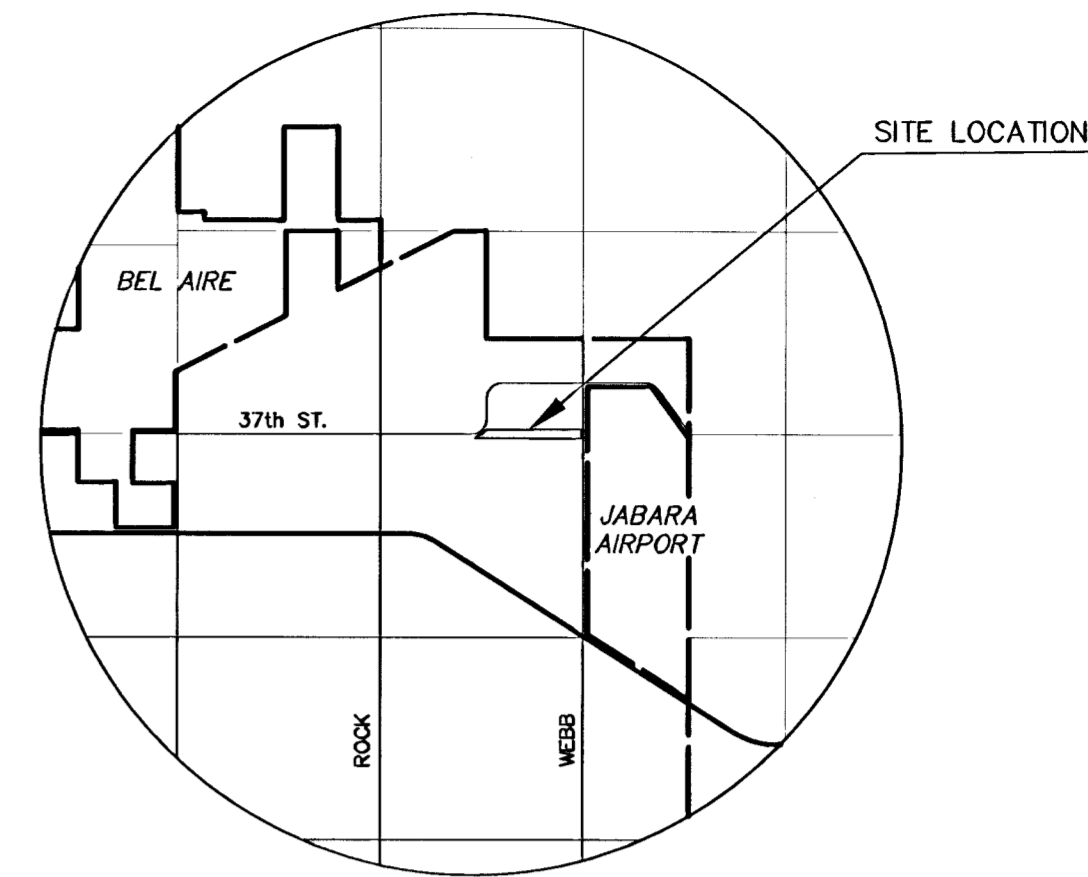
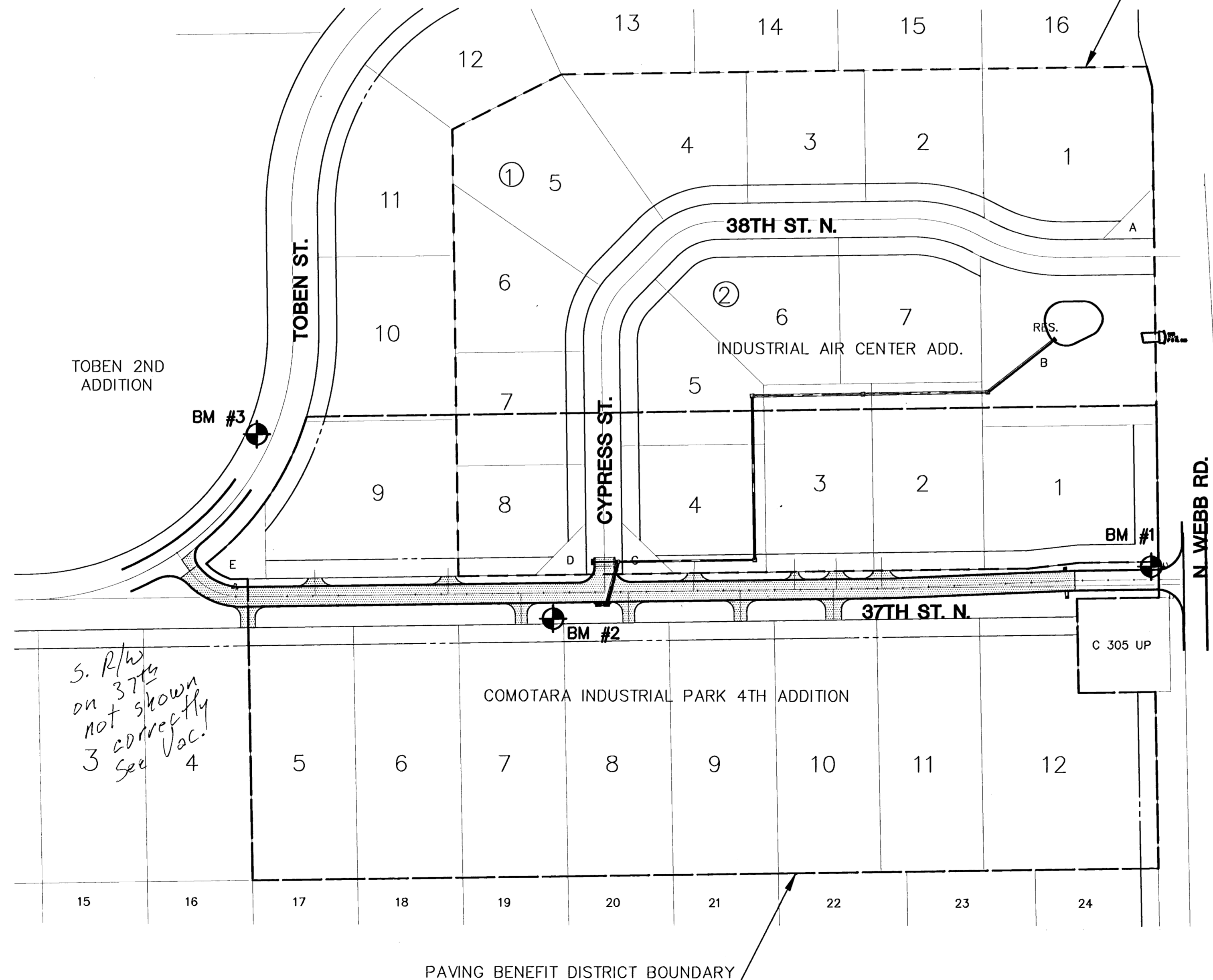
PAVING PROJECT NO. 472-81373  
INDEX CODE 763433  
S.W.S. 340, PROJECT NO. 468-82694  
INDEX CODE 750869

*37th St. N.*

## GENERAL NOTES

- UNLESS SHOWN OR STATED OTHERWISE ON THESE DRAWINGS, MATERIALS AND CONSTRUCTION SHALL BE IN ACCORDANCE WITH CITY OF WICHITA CONCRETE PAVEMENT AND ASPHALTIC CONCRETE PAVEMENT SPECIFICATIONS.
- THE CONTRACTOR SHALL BE RESPONSIBLE FOR PRESERVING PROPERTY IRONS. THE CONTRACTOR WILL BE REQUIRED TO RE-ESTABLISH ANY PROPERTY IRONS WHICH ARE DAMAGED OR DESTROYED BY HIS CONSTRUCTION OPERATIONS. SUCH IRONS SHALL BE RE-ESTABLISHED BY A LICENSED LAND SURVEYOR IN ACCORDANCE WITH STATE LAWS.
- TRANSITION CURB FROM FULL HEIGHT COMBINATION CURB AND GUTTER TO ROLL TYPE COMBINATION CURB AND GUTTER IS TO BE PAID AS BID FOR LINEAL FEET COMBINED CURB AND GUTTER (3 5/8" ROLL).
- EXISTING UTILITIES AND THEIR LOCATIONS, AS SHOWN ON THE PLANS REPRESENT THE BEST INFORMATION OBTAINABLE FOR DESIGN. LOCATION INFORMATION HAS BEEN OBTAINED FROM THE VARIOUS UTILITY COMPANIES AND IS EITHER FROM COMPANY RECORD DRAWINGS OR COMPANY PROVIDED FIELD LOCATIONS. THE PLAN LOCATIONS SHOWN ARE NOT GUARANTEED. ADDITIONAL EXISTING UTILITIES MAY ALSO BE ENCOUNTERED.
- CONTRACTOR WILL BE REQUIRED TO PROVIDE A MINIMUM ADVANCE NOTICE OF FORTY-EIGHT (48) HOURS TO UTILITY COMPANIES PRIOR TO STARTING ANY EXCAVATION AS FOLLOWS:  
  
KANSAS ONE-CALL 1-800-344-7233  
OR 687-2470 (LOCAL WICHITA)  
  
THE CONTRACTOR MUST NOTIFY THE FOLLOWING IN CASE OF AN EMERGENCY:  
  
SOUTHWESTERN BELL TELEPHONE COMPANY 1-571-2115  
CABLEVISION 262-0661  
KG&E (GAS DIST) 832-0012  
KANSAS (ELECTRIC) 264-1141  
CITY OF WICHITA WATER & SEWER DEPT. 268-4908  
ARKLA GAS COMPANY 942-8350 OR 263-8161
- RUBBLE FROM THE REMOVAL OF MISCELLANEOUS STRUCTURES AND EXCESS EXCAVATION WHICH IS TO BE WASTED SHALL BE DISPOSED OF ON SITES TO BE PROVIDED BY THE CONTRACTOR. THESE SITES SHALL BE APPROVED BY THE ENGINEER AS TO SUITABILITY, APPEARANCE AND SITE LOCATION. LOCATIONS THAT, IN THE OPINION OF THE ENGINEER, WILL LEAVE AN UNSIGHTLY APPEARANCE WILL NOT BE APPROVED. ALL DISPOSAL SITES MUST BE APPROVED BY THE KANSAS DEPARTMENT OF HEALTH AND ENVIRONMENT. MATERIAL EITHER STOCKPILED OR DISPOSED OF IN A FLOOD PLAIN WOULD REQUIRE A KANSAS STATE BOARD OF AGRICULTURE PERMIT. ANY MATERIAL DUMPED IN WATERS OF THE UNITED STATES OR WETLANDS IS SUBJECT TO U.S. CORPS OF ENGINEERS PERMITTING REGULATIONS. ANY MATERIAL BURIED OR STOCKPILED BEYOND APPROVED CONSTRUCTION LIMITS WOULD REQUIRE ADDITIONAL ARCHAEOLOGICAL INVESTIGATIONS UNLESS BURIED IN A PREVIOUSLY APPROVED BORROW LOCATION.
- THIS PROJECT INCLUDES A CERTAIN AMOUNT OF ROLL TYPE CURB CONSTRUCTION. ROLL CURBS SHALL BE DEPRESSED THROUGH ALL DRIVEWAY OPENINGS WHEN SUCH DRIVES ARE CONSTRUCTED AS A PART OF THE PROJECT. NO MORE THAN 2 DRIVES 20 FEET IN WIDTH OR EQUIVALENT COMBINATIONS THEREOF ARE TO BE CONSTRUCTED WITH THIS PROJECT.
- A SAW CUT OF AT LEAST ONE-HALF THE DEPTH OF THE EXISTING SURFACE COURSES OR ONE-FOURTH THE DEPTH OF THE EXISTING TOTAL PAVEMENT THICKNESS SHALL BE PROVIDED AT LOCATIONS WHERE PROPOSED CONSTRUCTION ADJUTS AN EXISTING SURFACE OR PAVEMENT FOR WHICH PARTIAL REMOVAL OF THAT SURFACE OR PAVEMENT IS REQUIRED. SAW JOINT TO FACILITATE REMOVAL WITHIN THREE (3) FEET OF EXISTING JOINTS WILL NOT BE PERMITTED AND FOR SUCH INSTANCES THE LIMITS OF REMOVAL SHALL EXTEND TO THE EXISTING JOINT. SUCH SAW CUTS WILL NOT BE PAID FOR DIRECTLY AND THIS COST SHALL BE CONSIDERED AS SUBSIDIARY TO THE REMOVAL OF SURFACE OR PAVEMENT.
- TREES TO BE REMOVED ARE MARKED . ALL TREES WHICH IN THE OPINION OF THE FIELD ENGINEER CAN BE SAVED, SHALL BE SAVED.
- CONTRACTOR SHALL RESEED AND MULCH ALL DISTURBED AREAS. COST SHALL BE CONSIDERED SUBSIDIARY TO SITE RESTORATION.
- CONTRACTOR SHALL USE AGGREGATES FOR GRAVEL INSTALLATION ON CYPRESS FROM K-DOT STANDARD SPEC. 1990 EDITION SUBSECTION 1114.
- INTERURBAN TRAFFIC GENERATED OUTSIDE THE PROJECT AREA AND LOCAL BUSINESS OR APARTMENT TRAFFIC GENERATED WITHIN THE PROJECT AREA ARE TO BE CARRIED THROUGH CONSTRUCTION.

37TH STREET NORTH: LOTS 5 THROUGH 8, INCLUSIVE AND THE WEST 55.86 FEET OF LOT 9, COMOTARA INDUSTRIAL PARK FOURTH ADDITION. LOT 9, EXCEPT THE WEST 55.86 FEET, AND ALL OF LOTS 10, 11 AND 12, COMOTARA INDUSTRIAL PARK FOURTH ADDITION. THE NORTH 300.00 FEET OF THE SOUTH 350.00 FEET OF THE SOUTHEAST QUARTER OF SECTION 29, TOWNSHIP 26 SOUTH, RANGE 2 EAST OF THE 6TH P.M. FROM THE EAST LINE OF TOBEN STREET TO THE WEST LINE OF WEBB ROAD.



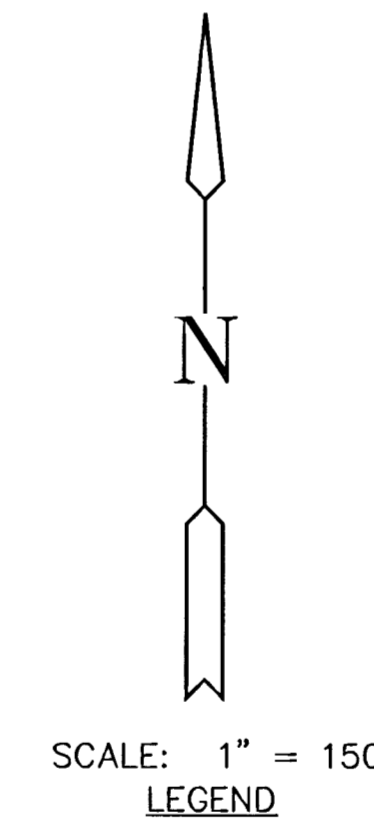
LOCATION MAP

## INDEX TO DRAWINGS

SHEET NO.	DESCRIPTION
1	TITLE SHEET
2	TYP. SECTION 41'B-B
3	STD. DRIVE ENTRANCES FULL HEIGHT CURB
4-5	MISC. DETAILS
6-7	STANDARD TYPE 1A CURB INLET
8-10	PAVING PLAN SHEETS
11-13	STORM SEWER PLAN SHEETS
14-19	PAVING CROSS SECTIONS
20-21	FINAL PLATS

## BENCHMARKS

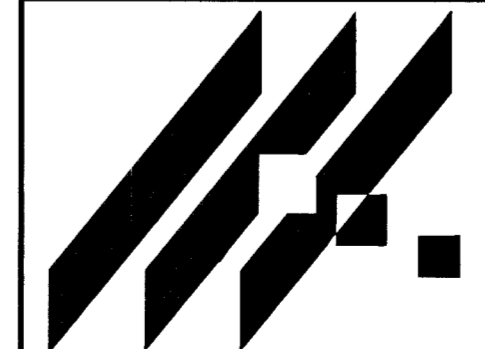
- BM #1 SQUARE CUT BENCH MARK, N.E. CORNER OF STORMWATER INLET, N.W. CORNER OF WEBB RD. & 37TH ST. ELEV. = 226.97
- BM #2 RAILROAD SPIKE IN POWER POLE, NORTH SIDE OF POWER POLE, SOUTH SIDE OF 37TH ST., BRITE BUILDING, 9229 E. 37TH ST. N. ELEV. = 238.82
- BM #3 SQUARE CUT BENCH MARK, N.E. CORNER OF STORMWATER INLET, NORTH SIDE OF TOBEN ST. AND E. 37TH ST. N. ELEV. = 226.45



SCALE: 1" = 150'  
LEGEND



LENGTH OF PROJECT	
41' BK-BK	1741.91 FT.
EARTHWORK SUMMARY	
EXCAVATION	6424.9 C.Y.
LOOSE FILL	661.2 C.Y.



MID-KANSAS ENGINEERING CONSULTANTS, INC.  
411 N. WEBB ROAD  
WICHITA, KS. 67206  
316-684-9600

**COMOTARA INDUSTRIAL PARK FOURTH ADDITION & INDUSTRIAL AIR CENTER ADDITION**  
PROJECT NAME

**PAVING & STORM WATER SEWER PLANS**  
SHEET TITLE

GJA/JPN DESIGN BY.	JPN/RDP/BDM DRAWN BY.	GJA/BDM CHECKED BY.
OCT. 1996 DATE	95114-ET JOB NO.	1 / 21 SHEET/OF

PAVING BENEFIT DISTRICT BOUNDARY

*S. R/W on 37th not shown 3 correctly see vac. 4*