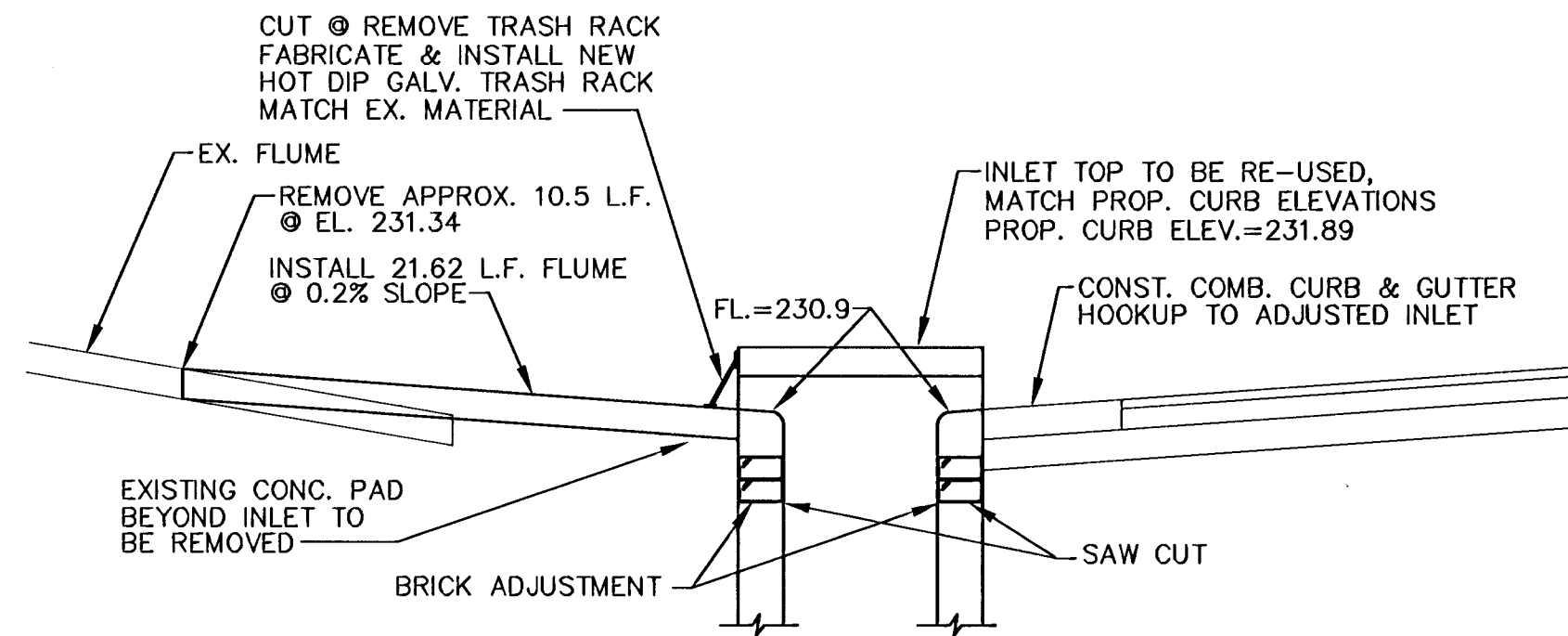
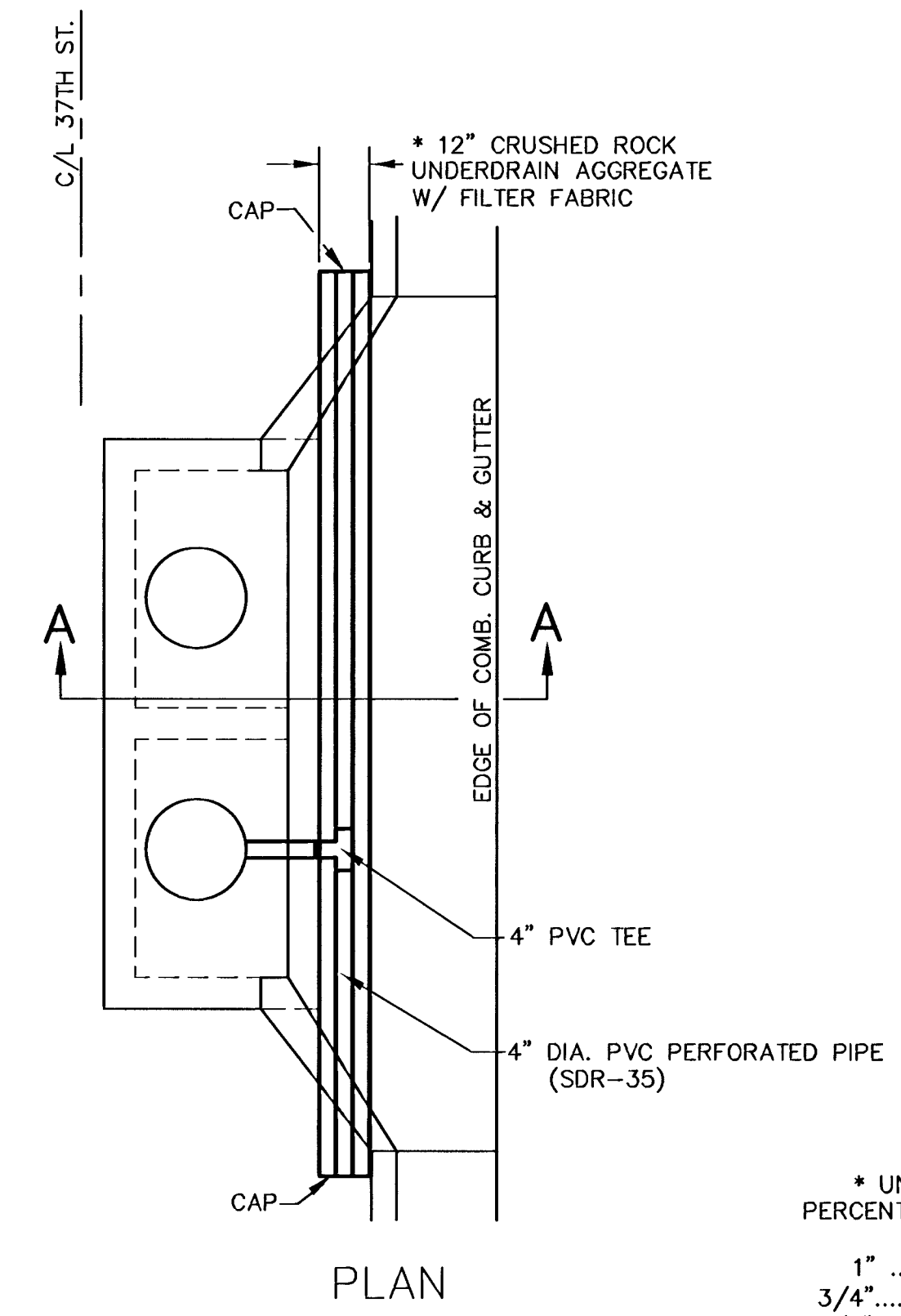


INLET ADJUSTMENT DETAIL 2
NO SCALE



INLET ADJUSTMENT DETAIL 1
NO SCALE

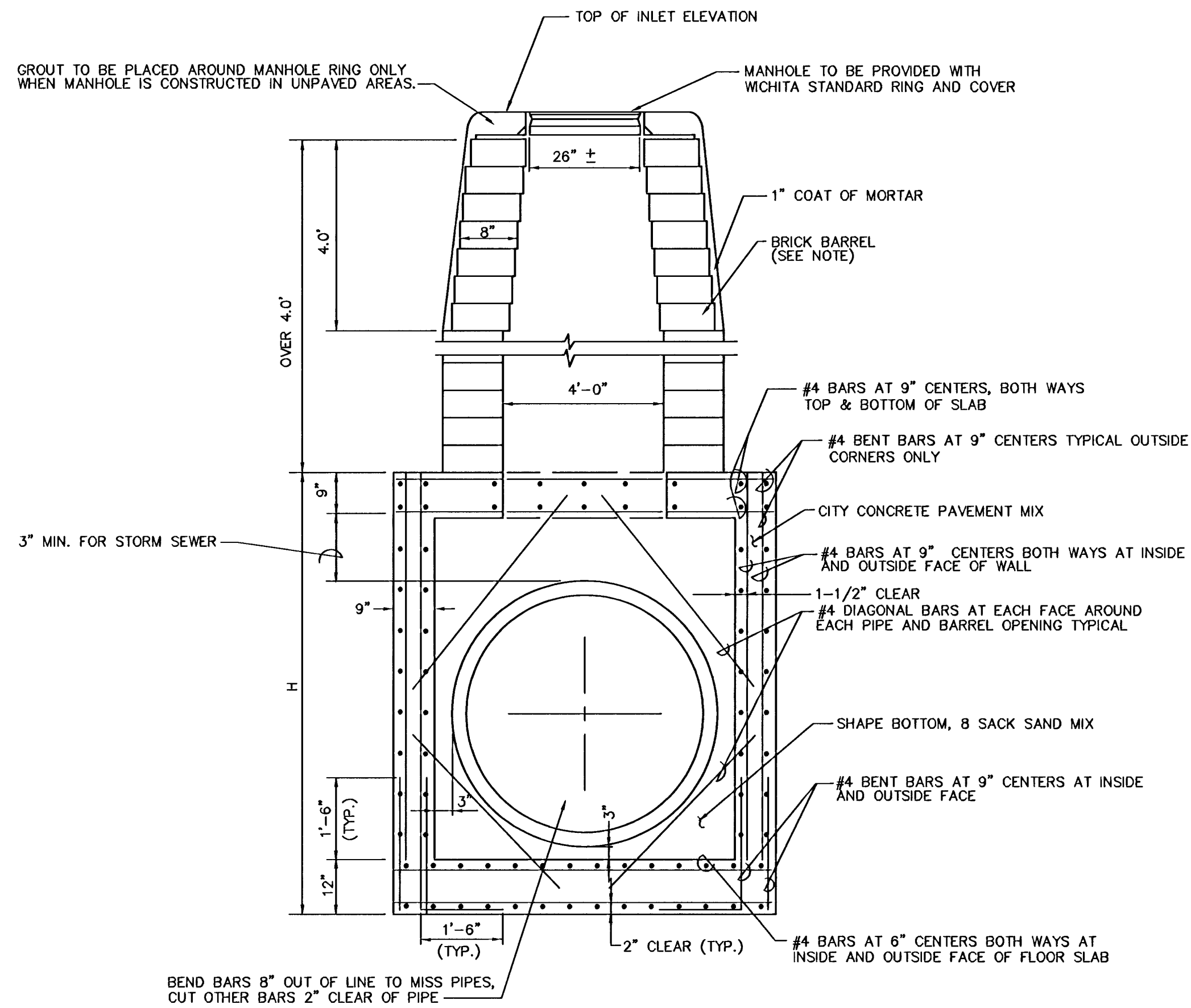


PLAN

* UNDERDRAIN AGGREGATE PERCENT OF AGGREGATE RETAINED

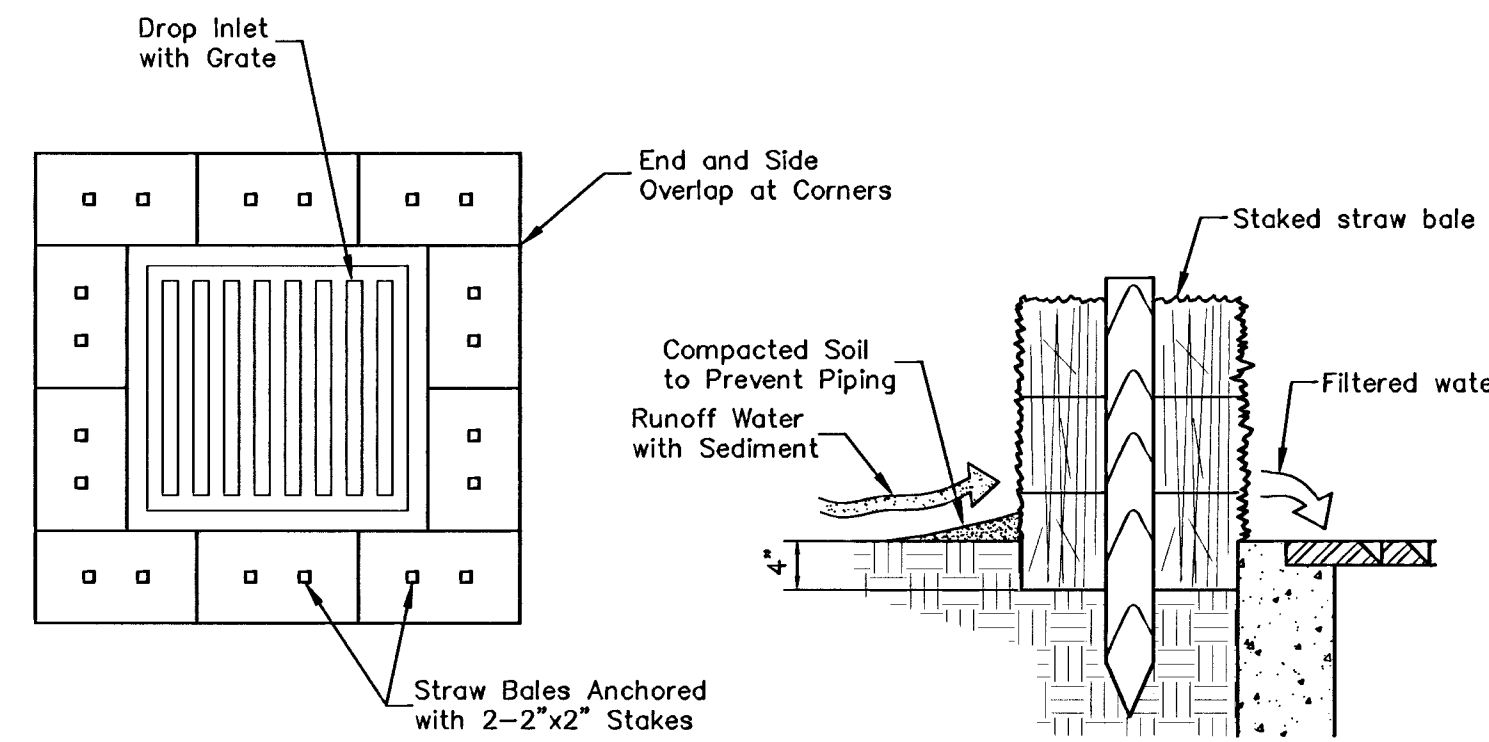
1"	0
3/4"	0 to 10
3/8"	45 to 80
#4	90 to 100
#8	95 to 100

ROCK QUALITY SHALL CONFORM TO THE REQUIREMENTS SPECIFIED BY K.D.O.T. 1990 EDITION STANDARD SPECIFICATION SUBSECTION 1102 FOR DURABILITY CLASS 1.



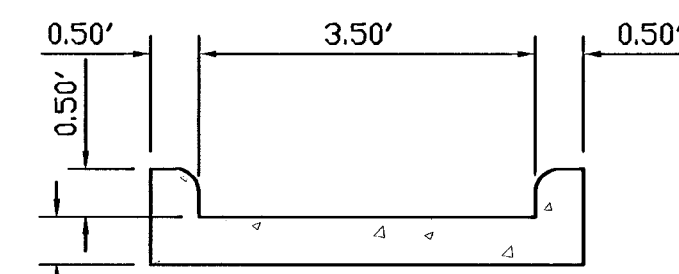
REINFORCED CONCRETE MANHOLE & INLET DETAIL
NO SCALE

DEPTH OF STACK: OVER 4.0'

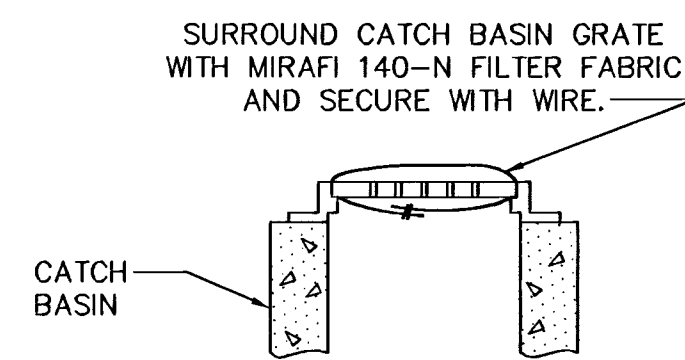


STRAW BALE DROP INLET SEDIMENT BARRIER

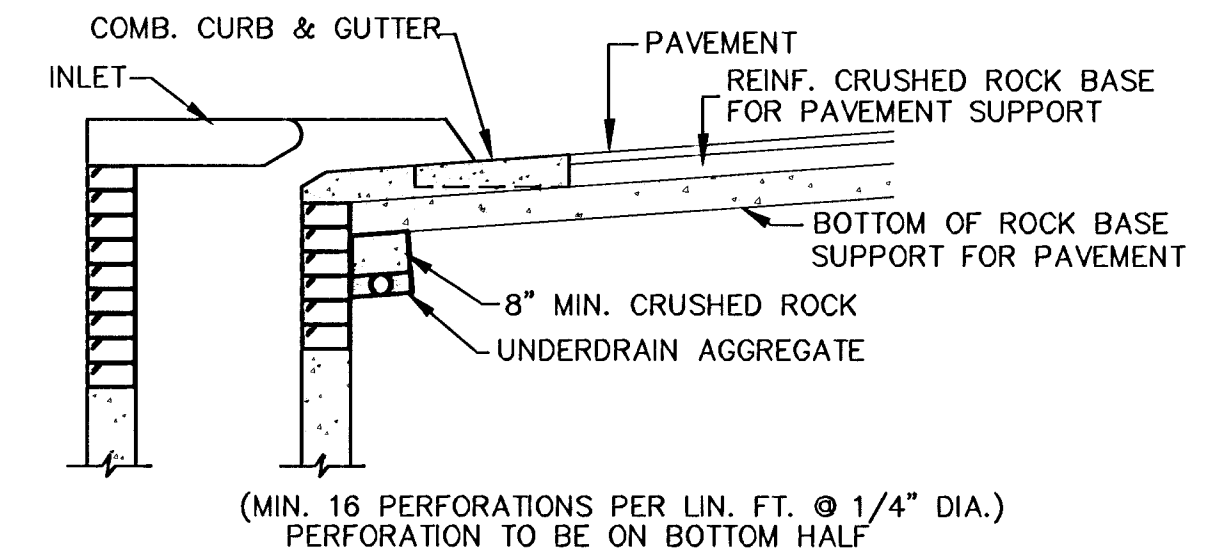
Note: Wedge loose straw between bales to prevent water from flowing between bales.



CONCRETE FLUME DETAIL
NO SCALE



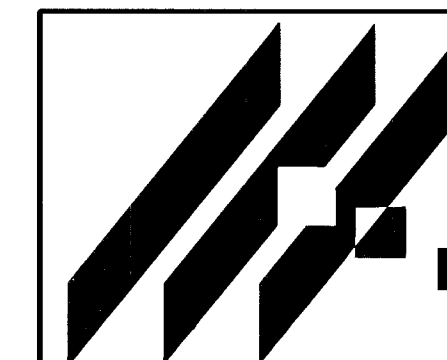
GRATE PROTECTION DETAIL
NO SCALE



SECTION A-A

NOTE: PLACE 4" PVC PERFORATED PIPE AT ALL DRAINAGE SUMP LOCATIONS. COST OF UNDERDRAIN SYSTEM TO BE INCIDENTAL TO THE REINFORCED CRUSHED ROCK SUBGRADE. INLET TYPE MAY VARY FROM THAT SHOWN.

PAVEMENT UNDERDRAIN DETAIL
NO SCALE



MID-KANSAS ENGINEERING CONSULTANTS, INC.
411 N. WEBB ROAD
WICHITA, K.S. 67206
316-684-9600

**COMOTARA INDUSTRIAL PARK
FOURTH ADDITION &
INDUSTRIAL AIR CENTER ADDITION**
PROJECT NAME

MISC. DETAILS
SHEET TITLE

JPN DESIGN BY.	JPN/RDP/BDM DRAWN BY.	GJA/JPN CHECKED BY.
OCT. 1996 DATE	5114_ED3 JOB NO.	4 / 21 SHEET/OF