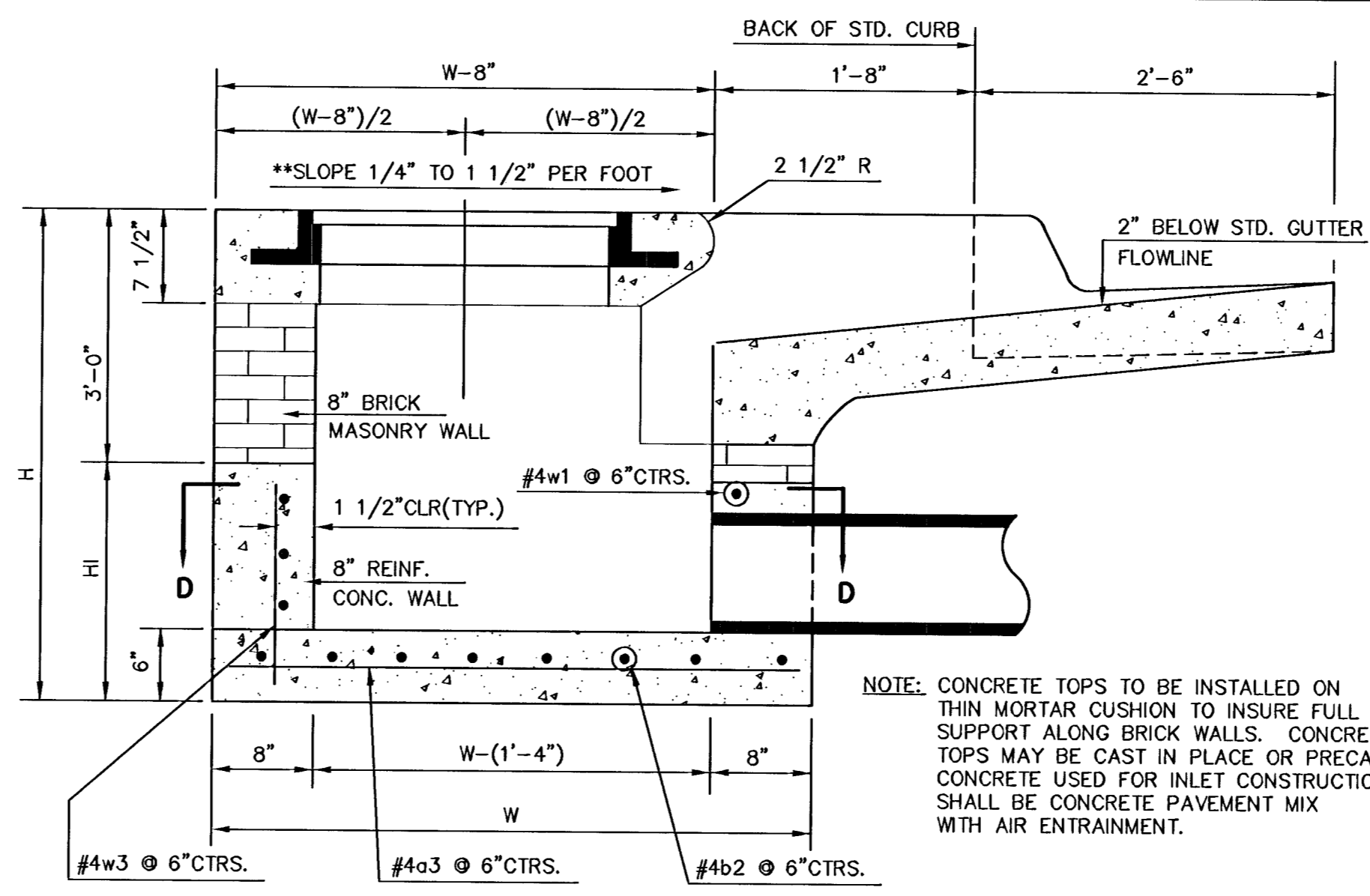
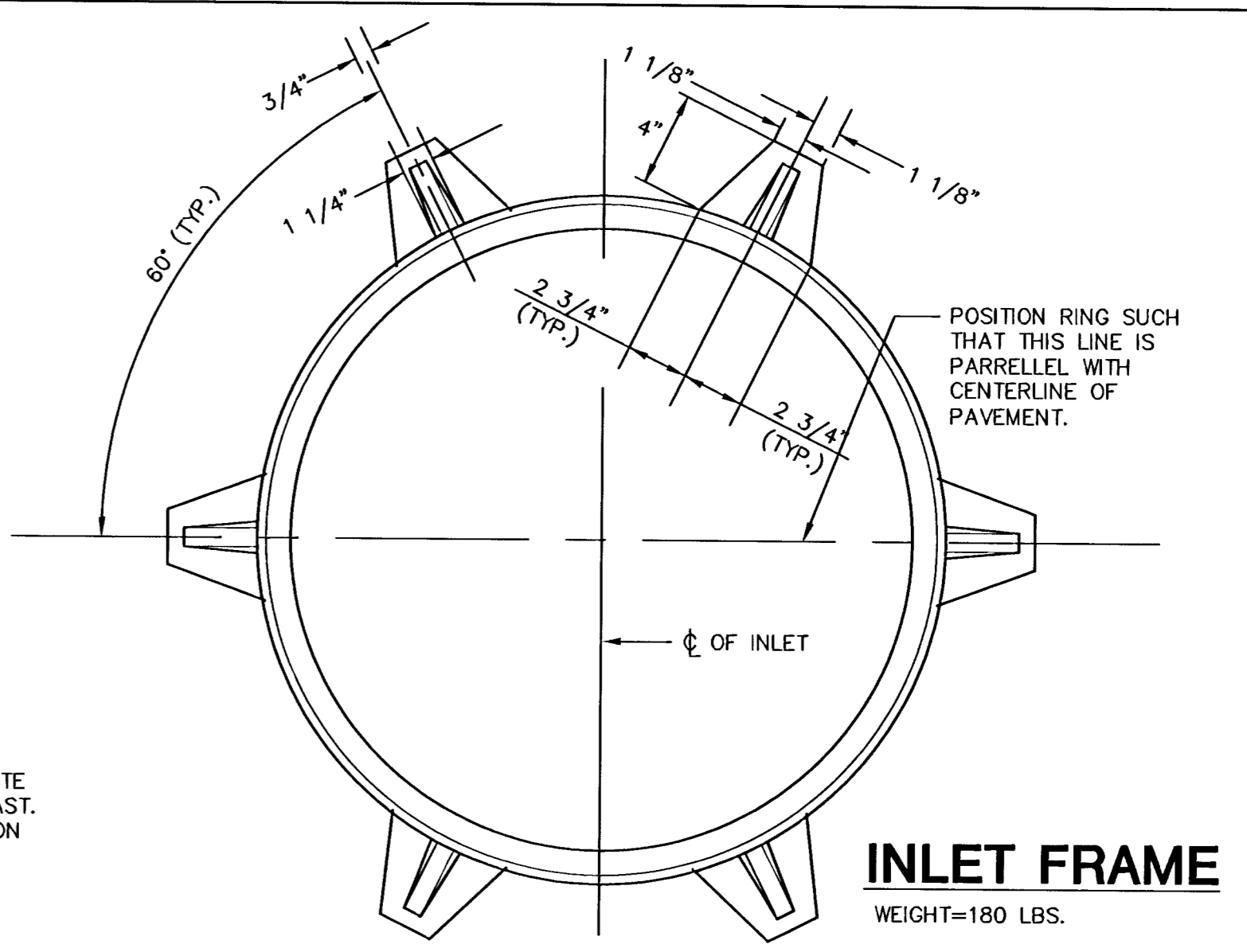


PLAN



SECTION A-A



INLET FRAME
WEIGHT=180 LBS.

NOTE: CONTRACTOR SHALL HAVE THE OPTION OF CONSTRUCTING 8" BRICK MASONRY WALLS BETWEEN THE CONCRETE INLET BASE AND TOP ON THIS INLET WHEN W=6'-4" AND H=7'-0" OR LESS.

ADDITIONAL CURB AND GUTTER CONSTRUCTION NECESSARY TO CONNECT SET-BACK INLET TO PAVEMENT WILL BE PAID FOR AT THE UNIT PRICE BID FOR EACH INLET HOOKUP.

INLET INVERT SHALL BE SHAPED WITH 8 SACK SAND MIX CONCRETE TO CREATE FLOW CHANNELS AND TO INCREASE HYDRAULIC EFFICIENCY SUCH THAT THE INLET WILL BE SELF CLEANING BETWEEN ALL INLET AND/OR OUTLET PIPES.

THE ENDS OF ALL PIPES INSTALLED IN INLETS SHALL BE CUT OFF FLUSH WITH THE INSIDE FACE OF THE INLET WALL.

NOTE: SLOPE OF INLET TOPS TO MATCH SIDEWALK OR PARKING SLOPES WITHIN LIMITS INDICATED.

BENDING DIAGRAM

| STANDARD CURB INLET PRECAST TOPS | | | |
|----------------------------------|--------------------|---------------|---------------|
| W | PRE-CAST TOP SIZE | PIPE SIZE | CU. YD. CONC. |
| 4'-4" | 3'-8"x6'-4"x7 1/2" | 21" & SMALLER | .038± |
| 5'-4" | 4'-8"x6'-4"x7 1/2" | 24" & 30" | .51± |
| 6'-4" | 5'-8"x6'-4"x7 1/2" | 36" & 42" | .64± |
| 7'-4" | 6'-8"x6'-4"x7 1/2" | 48" & 54" | .77± |
| 8'-4" | 7'-8"x6'-4"x7 1/2" | 60" & 66" | .90± |

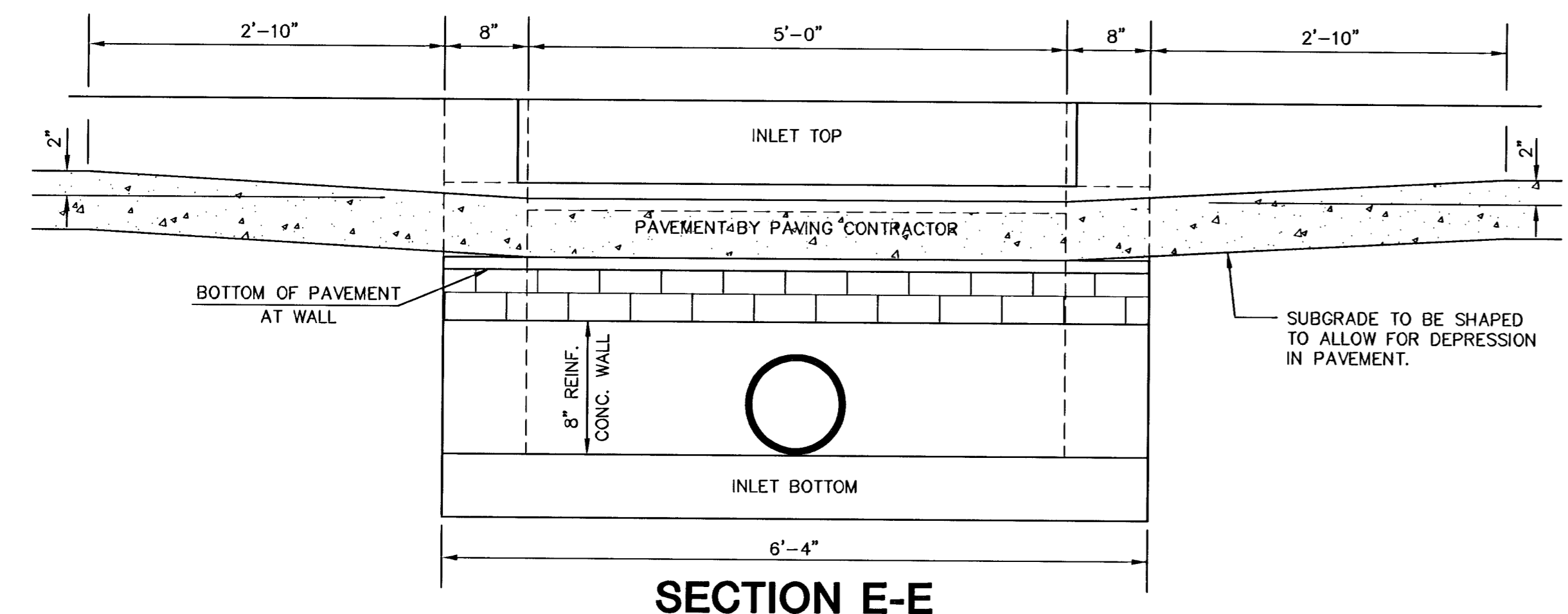
PRECAST SLAB AND FLOOR REINFORCING

| MARK | SIZE | W=4'-4" | | W=5'-4" | | W=6'-4" | | W=7'-4" | | W=8'-4" | |
|------|------|---------|--------|---------|--------|---------|--------|---------|--------|---------|--------|
| | | NO. | LENGTH | NO. | LENGTH | NO. | LENGTH | NO. | LENGTH | NO. | LENGTH |
| *a1 | #4 | 6 | 6'-7" | 6 | 8'-7" | 6 | 10'-7" | 6 | 12'-7" | 6 | 14'-7" |
| a2 | #4 | 4 | 6'-0" | 4 | 8'-0" | 4 | 10'-0" | 4 | 12'-0" | 4 | 14'-0" |
| a3 | #4 | 13 | 4'-1" | 13 | 5'-1" | 13 | 6'-1" | 13 | 7'-1" | 13 | 8'-1" |
| b1 | #4 | 1 | 4'-9" | 1 | 4'-9" | 1 | 4'-9" | 1 | 4'-9" | 1 | 4'-9" |
| *b2 | #4 | 23 | 6'-1" | 29 | 6'-1" | 35 | 6'-1" | 41 | 6'-1" | 47 | 6'-1" |
| x1 | #4 | 8 | 3'-10" | 8 | 4'-2" | 8 | 4'-6" | 8 | 4'-10" | 8 | 5'-2" |

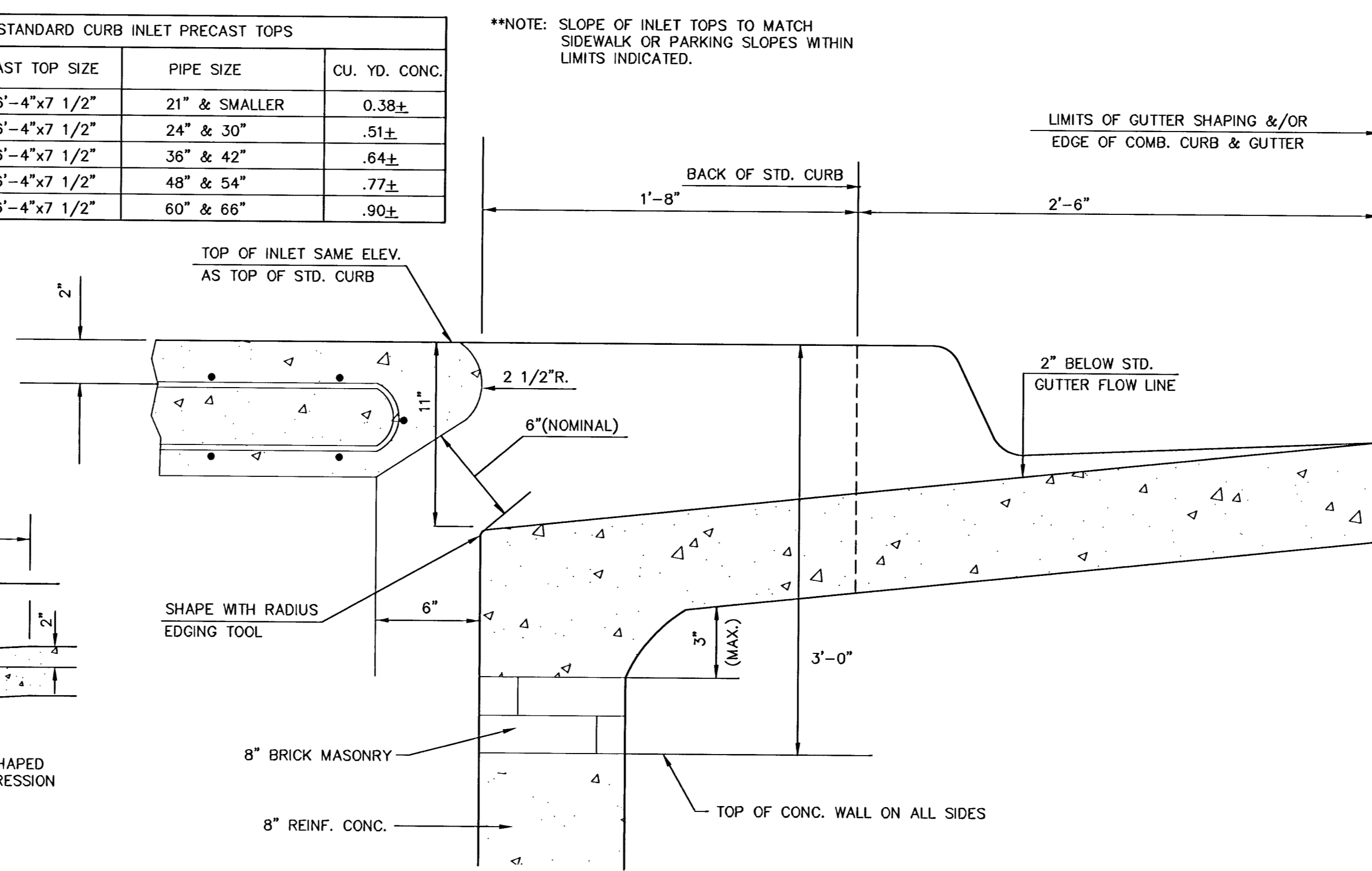
WALL REINFORCING

| MARK | SIZE | W=4'-4" | | W=5'-4" | | W=6'-4" | | W=7'-4" | | W=8'-4" | |
|------|------|---------|--------|---------|--------|---------|--------|---------|--------|---------|--------|
| | | NO. | LENGTH | NO. | LENGTH | NO. | LENGTH | NO. | LENGTH | NO. | LENGTH |
| w1 | #4 | ① | 6'-1" | ① | 6'-1" | ① | 6'-1" | ① | 6'-1" | ① | 6'-1" |
| w2 | #4 | ① | 4'-1" | ① | 5'-1" | ① | 6'-1" | ① | 7'-1" | ① | 8'-1" |
| w3 | #4 | 32 | ② | 36 | ② | 40 | ② | 44 | ② | 48 | ② |

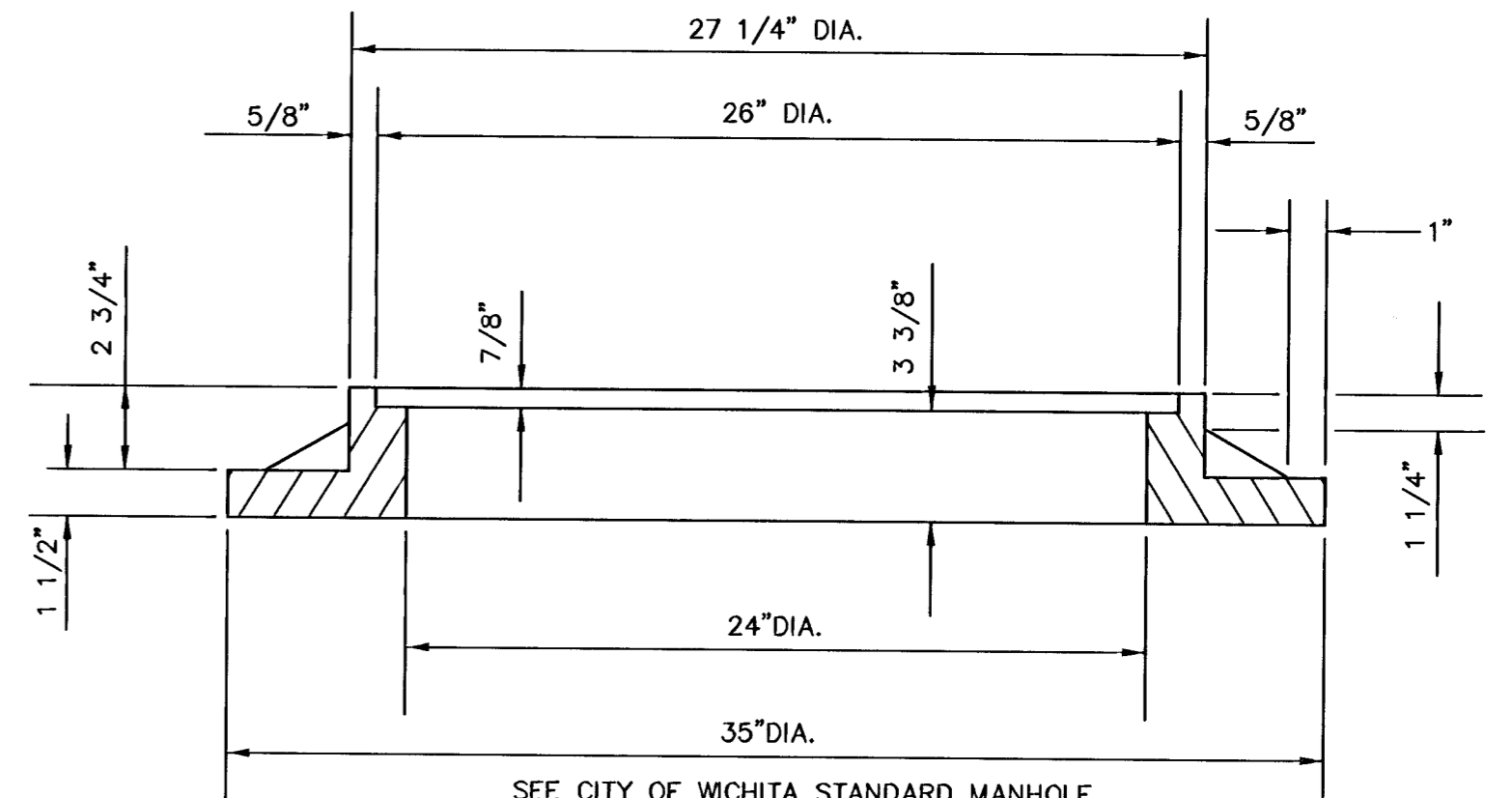
* FIELD BEND OR CUT REINFORCING AS REQUIRED FOR CLEARANCE
 ① HI-12"; (HI-12") ROUND DOWN TO NEAREST 0.5"
 ② HI-3"



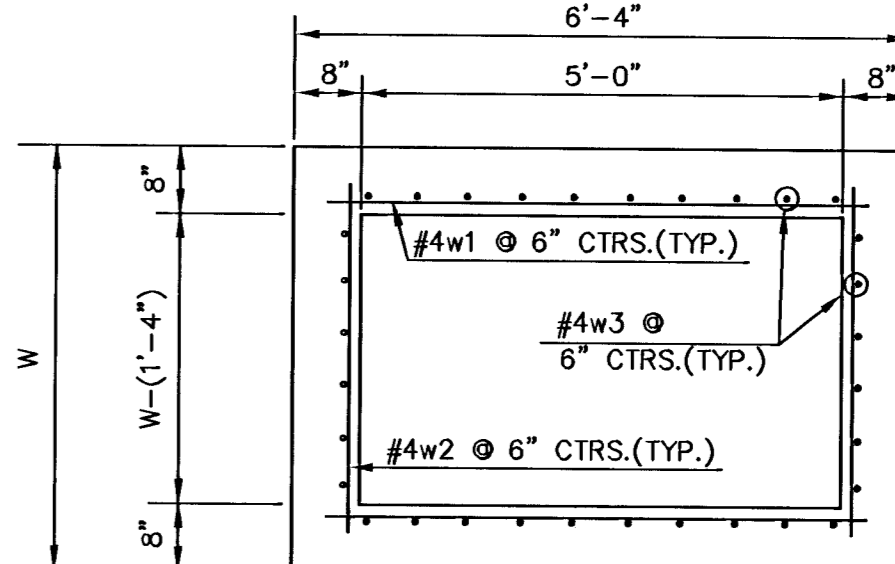
SECTION E-E



SECTION B-B



SECTION C-C



SECTION D-D

REVISED: 2-16-89 C.O.W.

STANDARD TYPE 1A CURB INLET
 INLET OPENING=6"x5'-0"

JUNE 1984
 CITY OF WICHITA, KANSAS

| | | |
|---------------|------------|------------------------------|
| Design C.O.W. | Checked by | Checked by |
| Drawn by | Date | Date JULY 1986 Job No. 95114 |