

FINAL PLAT OF COMOTARA INDUSTRIAL PARK FOURTH ADDITION

AN ADDITION TO WICHITA, SEDGWICK COUNTY, KANSAS

I, Steven E. Anderson a Land Surveyor in Kansas, do hereby certify that I have been in responsible charge of surveying and platting of "Comotara Industrial Park Fourth Addition" to Wichita, Sedgwick County, Kansas, into lots and a street, the same being accurately set forth in the accompanying plat and described as follows:

A replat of part of Blocks 3 and 4, Comotara Business Park Addition to Wichita Sedgwick County, Kansas described as follows:

Beginning at a point on the west line of the northeast quarter, Section 32, T 26 S, R 2 E of the 6th P.M., 50.00 feet south of the northwest corner of said quarter; thence east along the south line of 37th Street North bearing N 89° 07' 32" E, 2435.41 feet; thence S 1° 05' 53" E, 158.00 feet; thence N 89° 07' 32" E, 149.00 feet to the west line of Webb Road; thence south along said west line bearing S 1° 05' 53" E, 1427.00 feet; thence S 89° 07' 32" W, 2588.56 feet to the east line of Comotara Industrial Park Second Addition; thence north along said east line bearing N 0° 56' 53" W, 1585.00 feet to the point of beginning. Containing 93.57 acres, more or less.

35th Street, as dedicated in plat of Comotara Business Park Addition, is hereby vacated by virtue of K.S.A. 12-512-B.

I hereby certify that the details of the plat are correct to the best of my knowledge and belief this 27th day of September, 1978.

By: Steven E. Anderson
Steven E. Anderson
Van Doren-Hazard-Stallings
Architects-Engineers
260 North Rock Road
Wichita, Kansas

Know all men by these presents, that we the undersigned property owners of the land as above set forth in the Land Surveyor's Certificate, have caused the same to be surveyed and platted into lots and a street, the same to be known as "Comotara Industrial Park Fourth Addition" to Wichita, Sedgwick County, Kansas. The street is hereby dedicated to and for the use of the public; Easements for drainage, and construction and maintenance of public utilities, as indicated on the accompanying plat, are hereby granted. All abutter's rights of access across the south line of 37th Street North and across the west line of Rock Road are hereby granted to the City of Wichita, Kansas, provided, however, that the subdivision shall have access to 37th Street North at one location per lot and shall have access to Webb Road at one location per lot.

Wichita Development Company

By: Robert R. Fox
Robert R. Fox
Attorney in Fact for Wichita Development Company

State of Kansas, County of Sedgwick, SS:

Be it remembered that on this 27th day of September, 1978 before me, a Notary Public in and for said State and County, came the Wichita Development Company, by Robert R. Fox, Attorney in Fact for Wichita Development Company, to me personally known to be the same person who executed the foregoing instrument of writing and duly acknowledged the execution of the same. In testimony whereof I have hereunto set my hand and affixed my notarial seal the day and year above written.

Carolyn R. Owen Notary Public
Carolyn Owen

My Commission Expires _____

We, the Citibank, N.A., New York City, New York, mortgagees on the above described property do hereby consent to the plat of "Comotara Industrial Park Fourth Addition".

The Citibank, N.A., New York, New York.

By: Robert R. Fox
Robert R. Fox
Attorney in Fact for Citibank, N.A.

Be it remembered on this 27th day of September, 1978 before me, a Notary Public in and for said State and County, came the Citibank, N.A., New York City, New York, by Robert R. Fox, Attorney in Fact for Citibank, N.A., to me personally known to be the same person who executed the foregoing instrument of writing and duly acknowledged the execution of the same. In testimony whereof, I have hereunto set my hand and affixed my notarial seal the day and year above written.

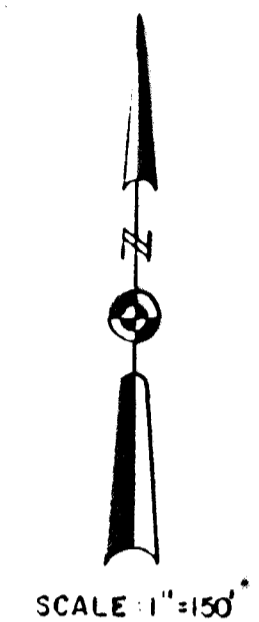
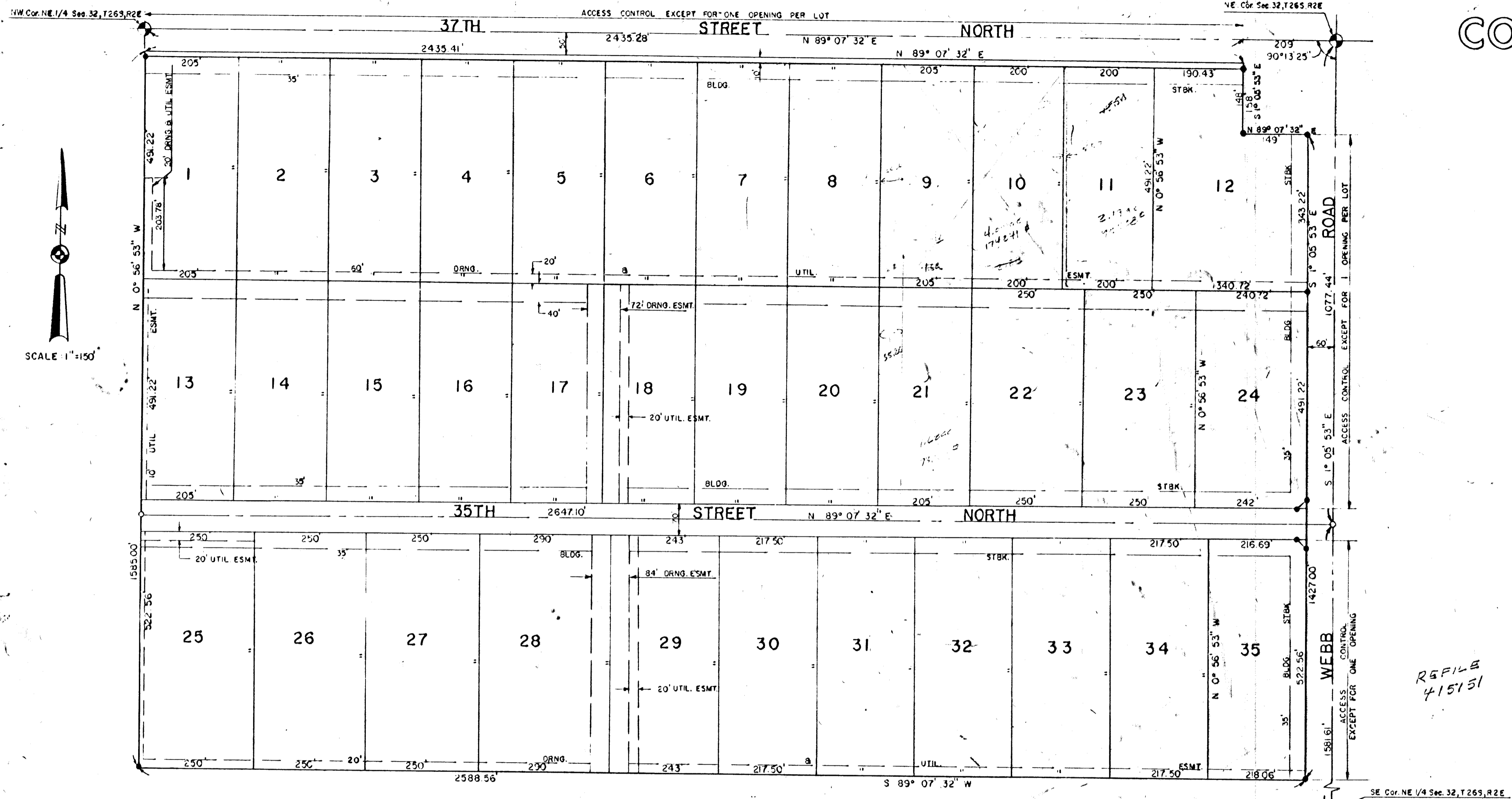
Carolyn R. Owen Notary Public
Carolyn R. Owen

My Commission Expires _____

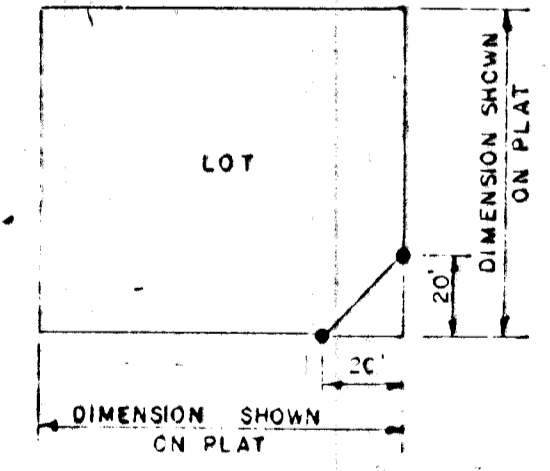
Pat Kettler
Pat Kettler
Deputy

Pat Kettler
Deputy

Restrictive Covenant P. 34 p. 1427



REFILE
415151



TYPICAL INTERSECTION
RIGHT OF WAY DETAILS

STATE OF KANSAS
SEDGWICK COUNTY SS:

This is to certify that this plat was refiled for record in the office of the Register of Deeds this 27th day of September, 1978 to change the legal description in the Surveyor's Certificate from "Beginning at the northwest corner of Lot 2, Block 3 of Comotara Business Park Addition" to "Beginning at a point on the west line of the northeast quarter, Section 32, T 26 S, R 2 E of the 6th P.M., 50.00 feet south of the northwest corner of said quarter".

By: Steven E. Anderson
Steven E. Anderson
VAN DOREN-HAZARD-STALLINGS

Bette F. McCart
Bette F. McCart
Register of Deeds

Pat Kettler
Pat Kettler
Deputy

#409014

This plat of "Comotara Industrial Park Fourth Addition" has been submitted to and approved by the Wichita-Sedgwick County Metropolitan Area Planning Commission, Wichita, Kansas.

Dated this 22nd day of June, 1978.

Wichita-Sedgwick County Metropolitan Area Planning Commission

Jerry Greider Vice-Chairman
Jerry Greider

Robert A. Lakin Secretary
Robert A. Lakin

This plat approved and all dedications shown hereon, if any, accepted by the City Commission of the City of Wichita, Kansas this 10th day of OCTOBER, 1978.

Connie A. Peters Mayor
Connie A. Peters

Donald C. Glick City Clerk
Donald C. Glick

Entered on transfer record this 16th day of October, 1978.

Stephen D. Wright County Clerk
Stephen D. Wright

This plat approved and all dedications shown hereon, if any, accepted by the Board of County Commissioners of Sedgwick County, Kansas this _____ day of _____, 1978.

Everett M. Patrick Chairman
Everett M. Patrick

Tom Scott Commissioner
Tom Scott

John H. Hale Commissioner
John H. Hale

Attest: Stephen D. Wright County Clerk
Stephen D. Wright

State of Kansas, County of Sedgwick, SS:

This is to certify that this instrument was filed for record in the Register of Deeds Office at 3:00 P.M. on the 16th day of OCTOBER, 1978.

Bette F. McCart Register of Deeds
Bette F. McCart

Pat Kettler Deputy
Pat Kettler

REFILE
20.00

20.00