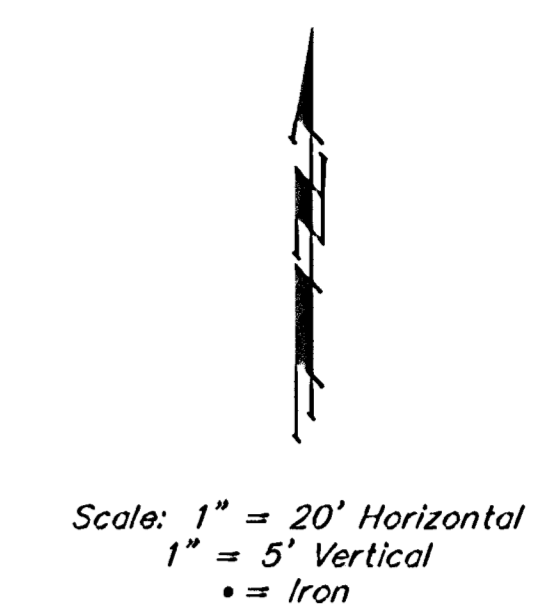
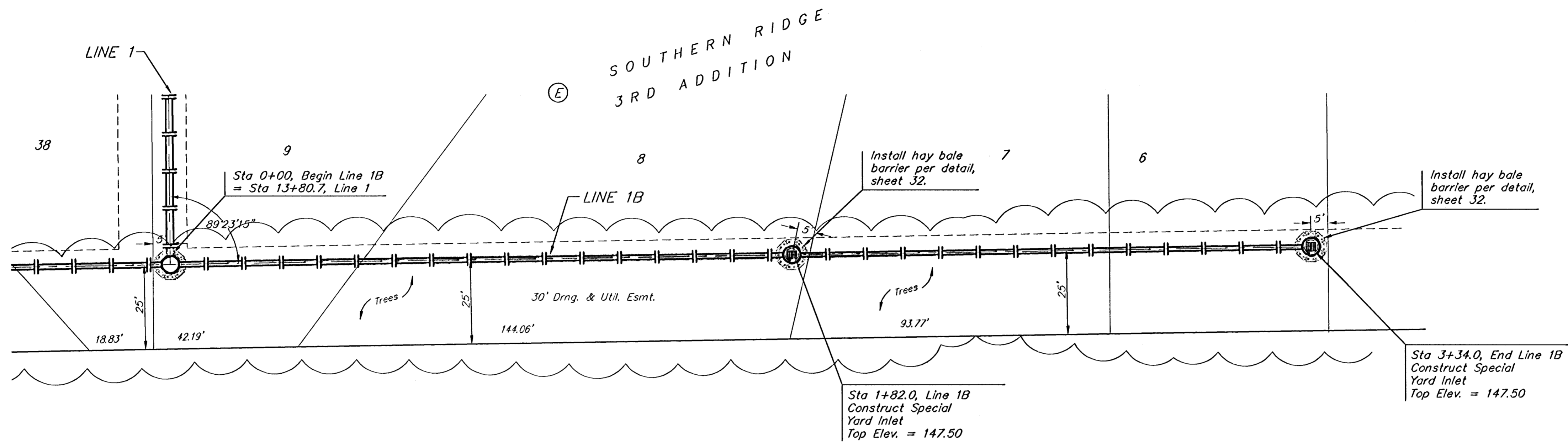


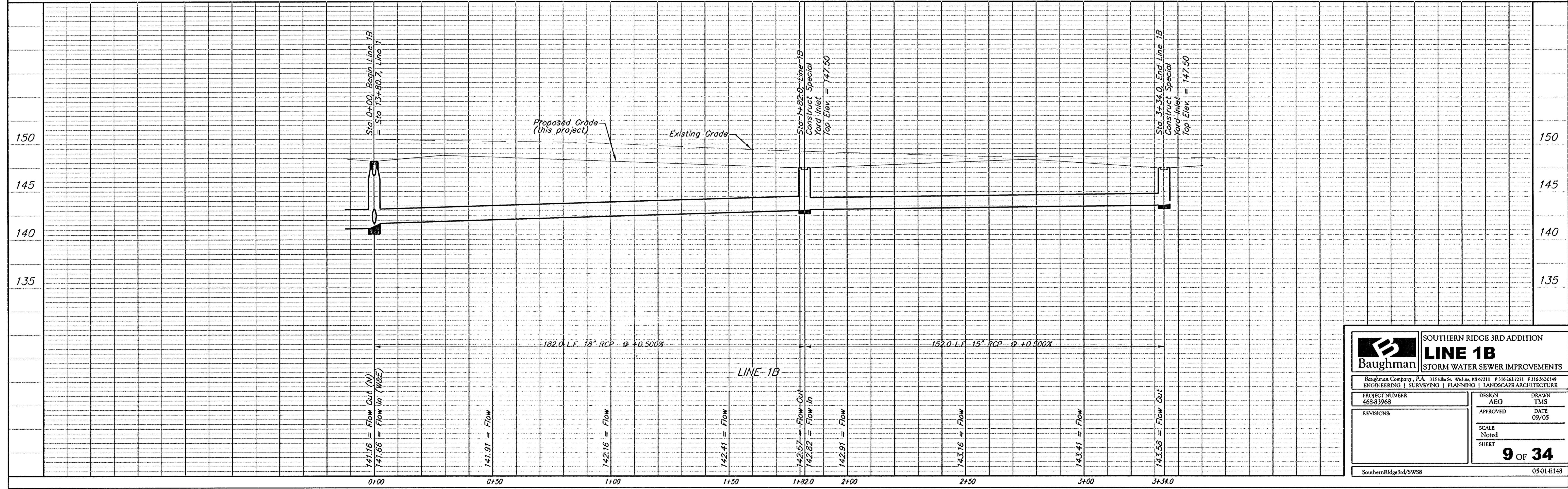
BENCHMARKS:
 BM #1: COW Disc at South West Corner of the Intersection of Lark & Atlanta.
 Elev. = 145.20 (City Datum)

BM #2: COW Disc at North West side of Westgate at South End of Lot 13 Block "B" Southern Ridge Addition.
 Elev. = 144.10 (City Datum)

BM #3: COW BM at Shefford on the south side of Pawnee Ave.
 Elev. = 145.53 (City Datum)



Remove trees only as necessary for storm sewer construction and only with permission of Developer or Baughman Co. Cost of removal to be incidental to lump sum bid item "Site Clearing & Restoration".



Baughman		SOUTHERN RIDGE 3RD ADDITION	
		LINE 1B	
		STORM WATER SEWER IMPROVEMENTS	
Baughman Company, P.A. 315 Ella St. Wichita, KS 67211 P 316-262-1771 F 316-262-1449			
ENGINEERING SURVEYING PLANNING LANDSCAPE ARCHITECTURE			
PROJECT NUMBER 468-83968	DESIGN AEG	DRAWN TMS	APPROVED DATE 09/05
REVISIONS:	SCALE Noted	SHEET 9 OF 34	
SouthernRidgeJct/SWS8		0501-E148	