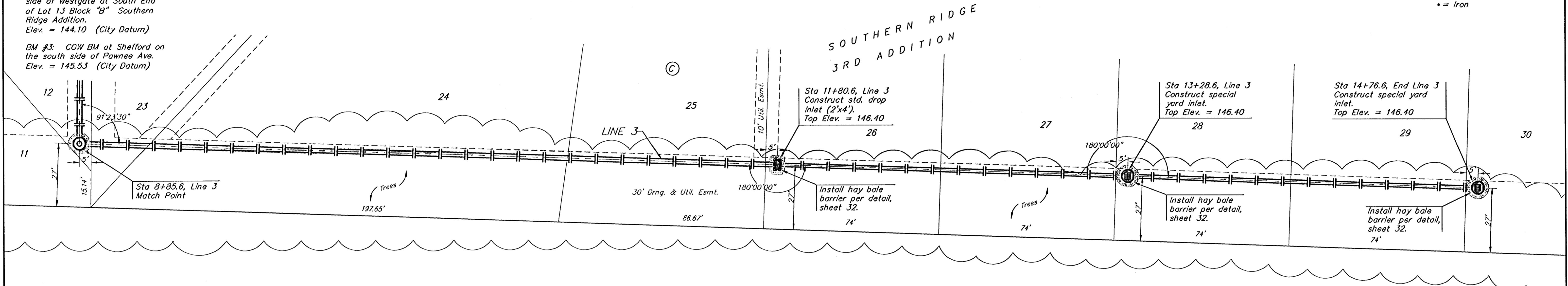


**BENCHMARKS:**  
 BM #1: COW Disc at South West Corner of the Intersection of Lork & Atlanta.  
 Elev. = 145.20 (City Datum)

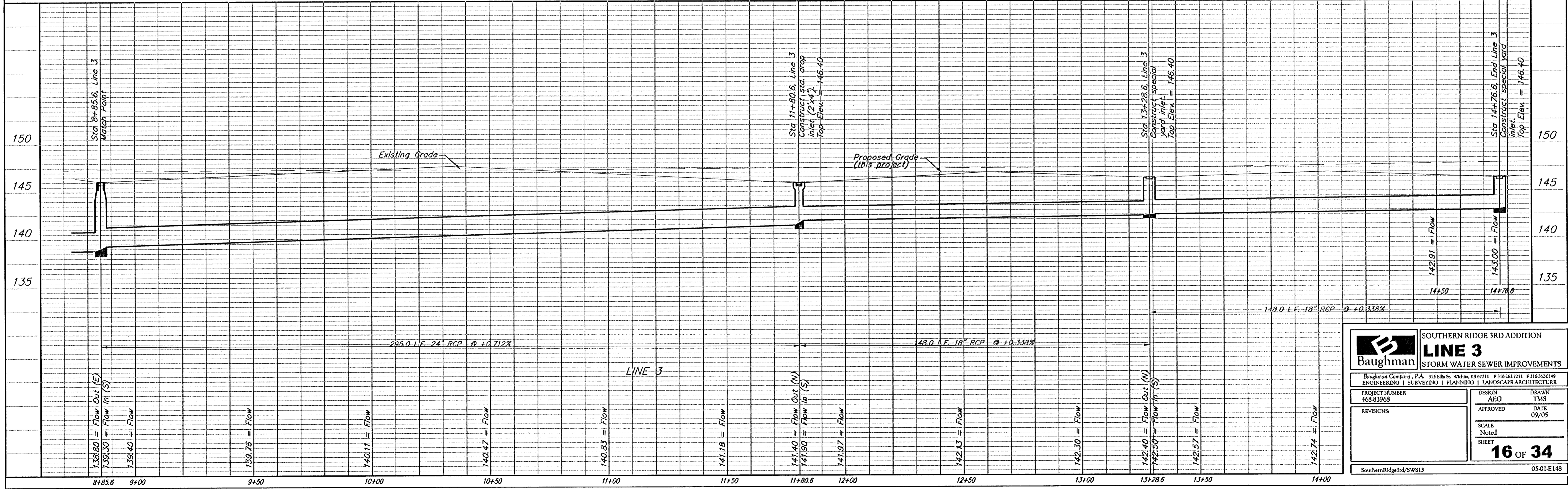
BM #2: COW Disc at North West side of Westgate at South End of Lot 13 Block "B" Southern Ridge Addition.  
 Elev. = 144.10 (City Datum)

BM #3: COW BM at Shefford on the south side of Pawnee Ave.  
 Elev. = 145.53 (City Datum)

Scale: 1" = 20' Horizontal  
 1" = 5' Vertical  
 • = Iron



Remove trees only as necessary for storm sewer construction and only with permission of Developer or Baughman Co. Cost of removal to be incidental to lump sum bid item "Site Clearing & Restoration".



		SOUTHERN RIDGE 3RD ADDITION	
		<b>LINE 3</b>	
STORM WATER SEWER IMPROVEMENTS		Baughman Company, P.A. 315 Hills & Valley, N.S. 01111 F316323111 F316323119 ENGINEERING   SURVEYING   PLANNING   LANDSCAPE ARCHITECTURE	
PROJECT NUMBER 468-83968	DESIGN AEG	DRAWN TMS	DATE 09/05
REVISIONS	APPROVED	SCALE Noted	SHEET
		<b>16 OF 34</b>	
SouthernRidge3rd/SWS13		0501E149	