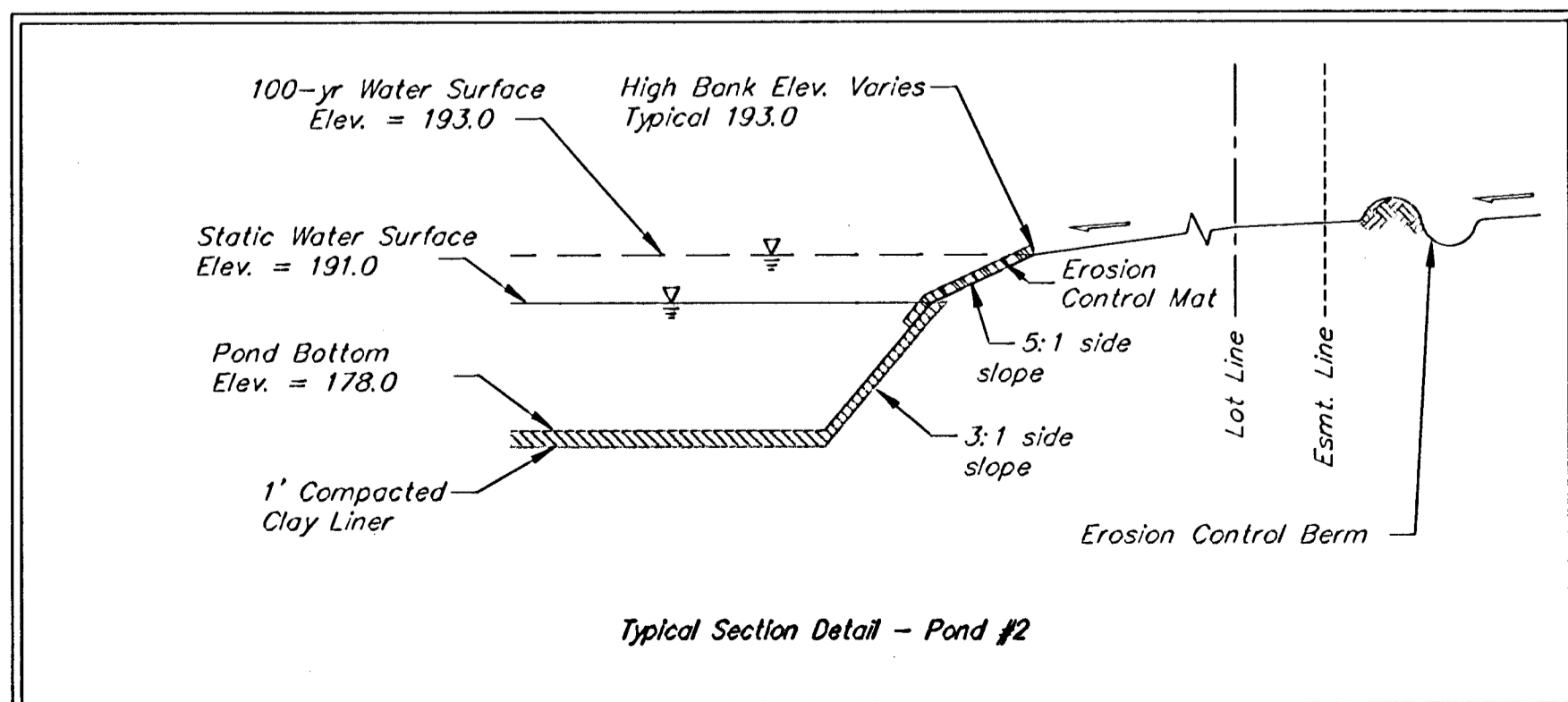


Pond #2 Data:
 Static WS elev. = 191.0
 100-yr WS elev. = 193.0

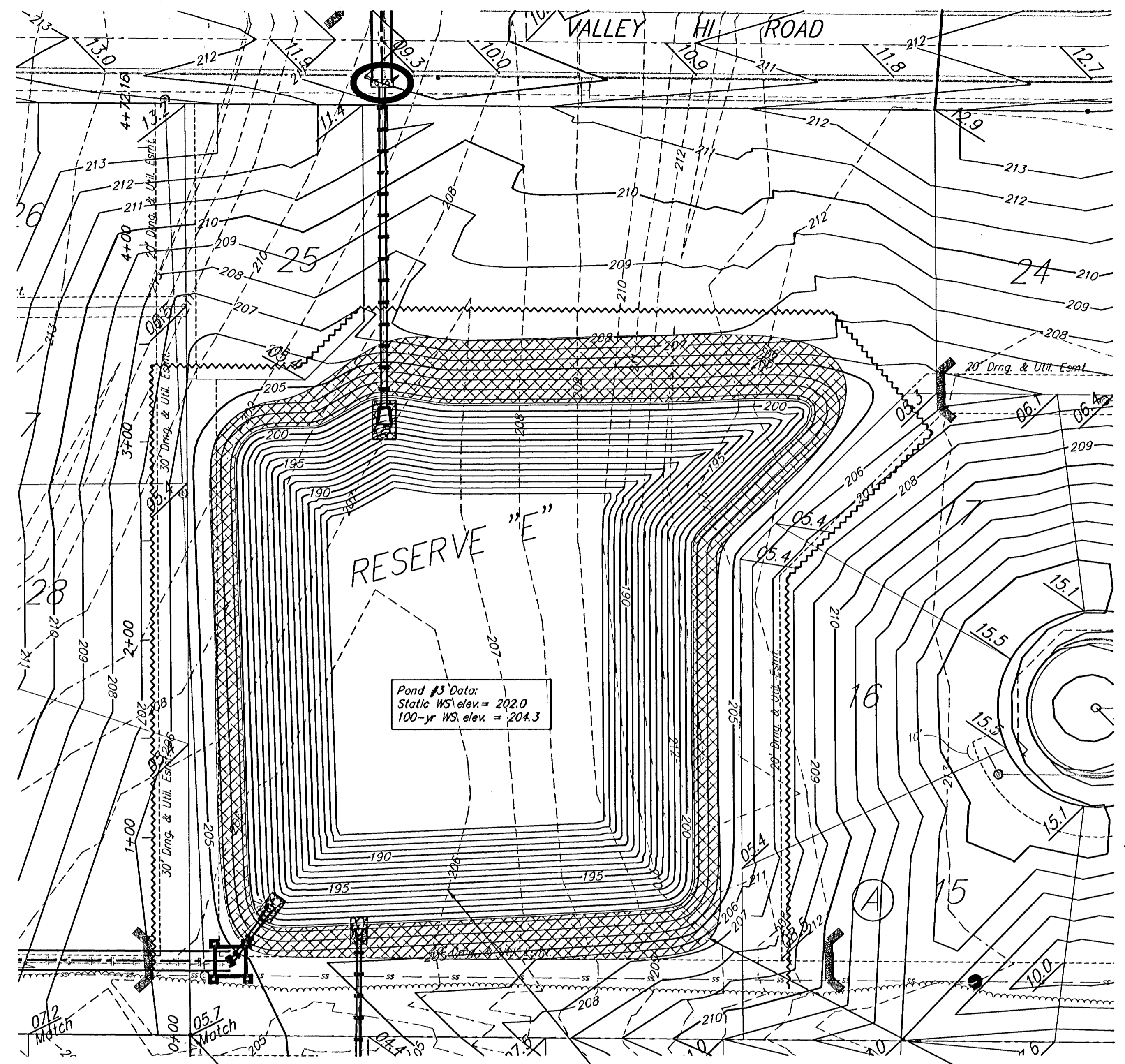
Install 3,068 S.Y. Curlex II, or approved equal. Erosion control mat shall be installed and anchored per manufacturer's specifications. Note: This quantity does not include excess material necessary for overlap and anchoring.

Construct Pond #2, see detail below

BL Sta 0+00 = NE corner of Lot 13, Block E, Auburn Hills 16th Add.



Typical Section Detail - Pond #2

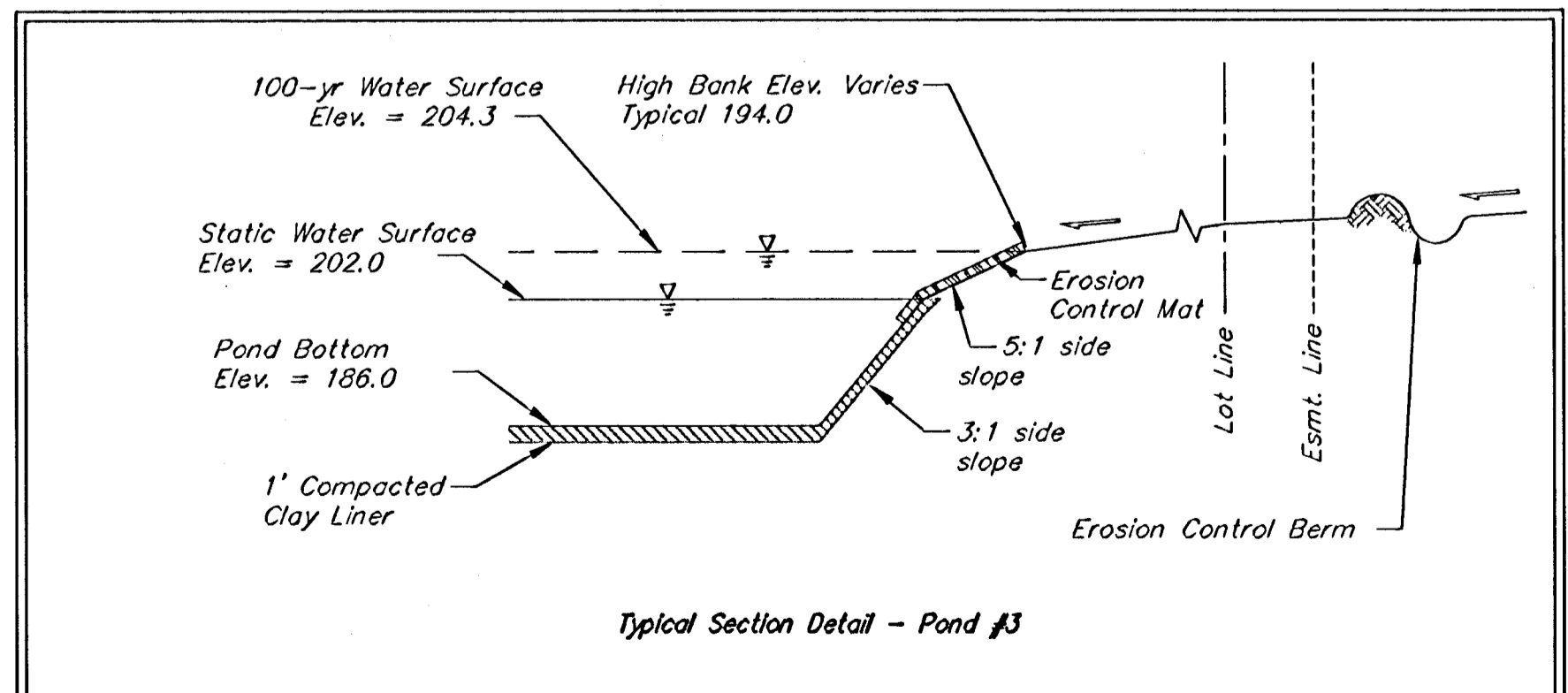


Pond #3 Data:
 Static WS elev. = 202.0
 100-yr WS elev. = 204.3

BL Sta 0+00 = SE corner of Lot 29, Block A, Auburn Hills 16th Add.

Construct Pond #3, see detail below

Install 2,279 S.Y. Curlex II, or approved equal. Erosion control mat shall be installed and anchored per manufacturer's specifications. Note: This quantity does not include excess material necessary for overlap and anchoring.



Typical Section Detail - Pond #3

Scale: 1" = 40'

		AUBURN HILLS 16TH ADDITION	
		POND #2 & #3	
Baughman Company, P.A. 315 Elm St., Walling, MS 39111 F316343701 F316343149 ENGINEERING SURVEYING PLANNING LANDSCAPE ARCHITECTURE		PROJECT NUMBER 468-9492	
REVISIONS		DESIGN AEG	
		DRAWN RDM	
		APPROVED DATE 03/08/2006	
		SCALE NOTED SHEET	
		9 OF 47	
AUBURN HILLS 16TH/SWD/POND_3			