

BENCHMARK:
 "□" CUT ON TOP OF CURB
 AT WEST LINE OF LOT 7,
 BLOCK A, AUBURN HILLS 5TH
 ADD.
 ELEV. = 1395.13 NGVD29

DISC IN BACK OF CURB,
 NORTH OF FRONT CORNER
 COMMON TO LOTS 23 AND 24,
 BLOCK D, AUBURN HILLS 12TH
 ADD.
 ELEV. = 1379.24 NGVD29

"□" CUT ON CENTER OF
 CATCH BASIN, NORTH OF LOT
 CORNER COMMON TO LOTS 1
 AND 15, BLOCK B, AUBURN
 HILLS 14TH ADD.
 ELEV. = 1381.05 NGVD29

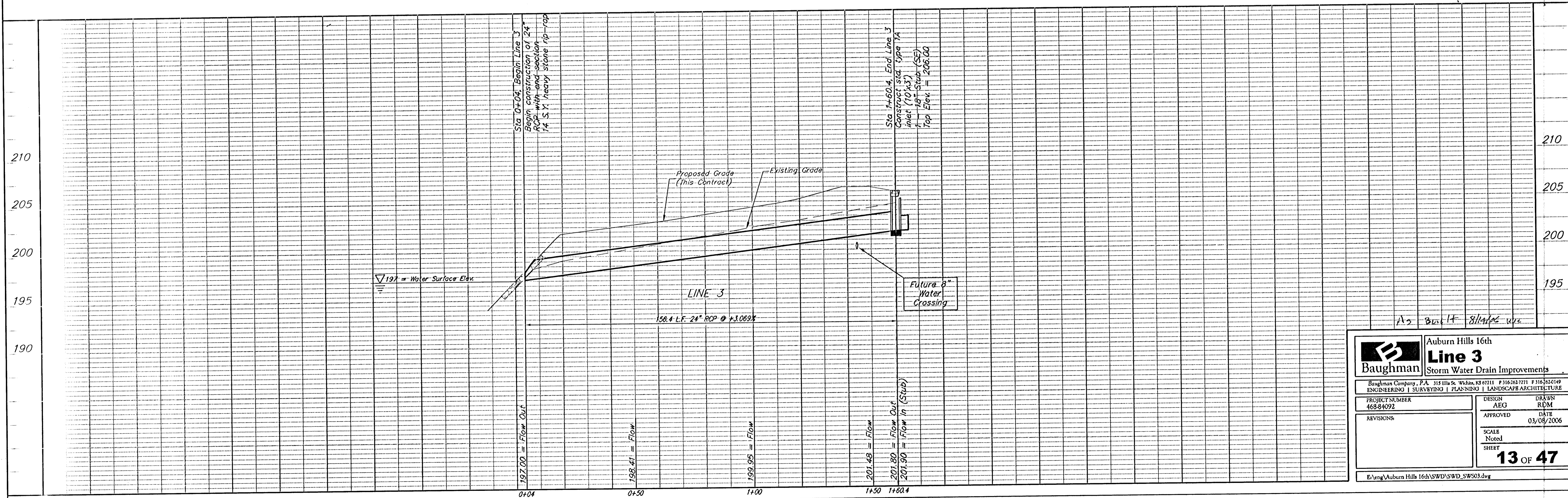
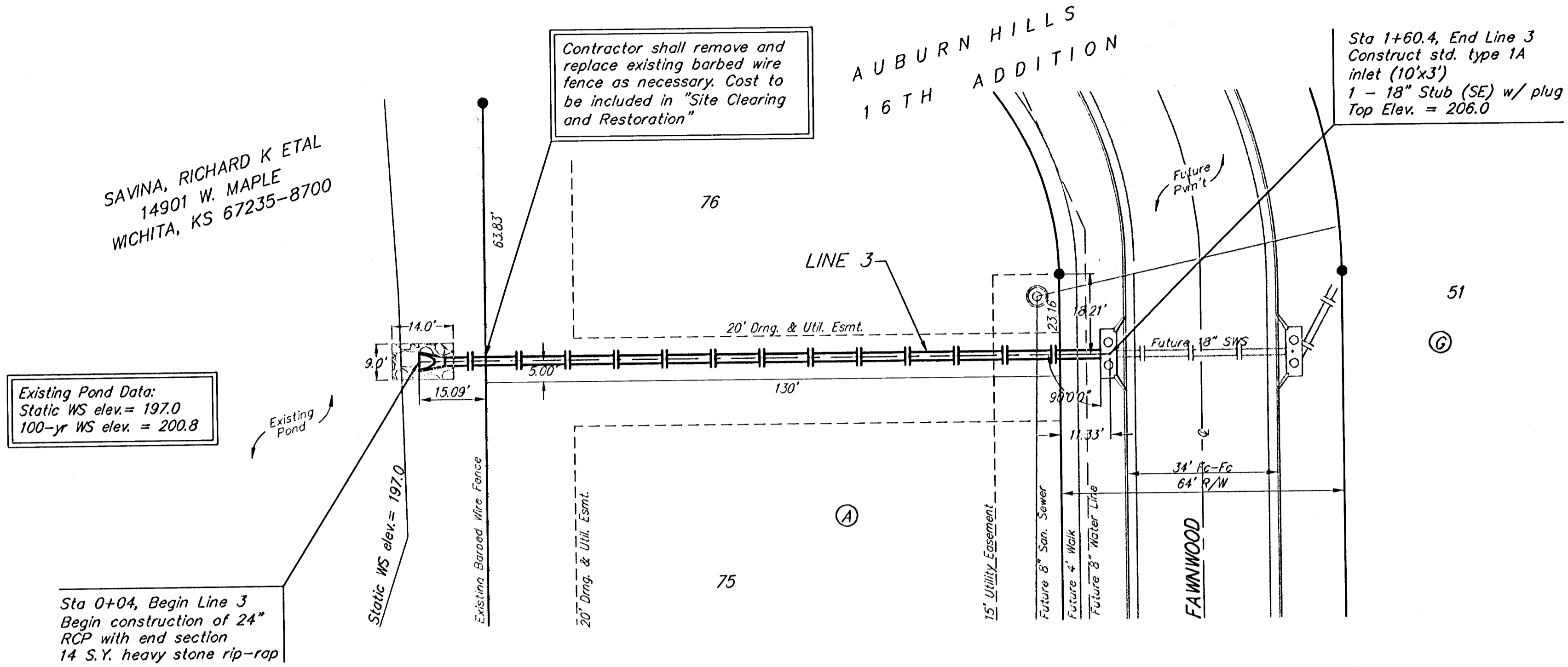
Existing Pond Data:
 Static WS elev. = 197.0
 100-yr WS elev. = 200.8

Sta 0+04, Begin Line 3
 Begin construction of 24"
 RCP with end section
 14 S.Y. heavy stone rip-rap

Contractor shall remove and
 replace existing barbed wire
 fence as necessary. Cost to
 be included in "Site Clearing
 and Restoration"

Sta 1+60.4, End Line 3
 Construct std. type 1A
 inlet (10'x3')
 1 - 18" Stub (SE) w/ plug
 Top Elev. = 206.0

Scale: 1" = 20' Horizontal
 1" = 5' Vertical
 • = Iron



		Auburn Hills 16th	
		Line 3	
		Storm Water Drain Improvements	
<small>Baughman Company, P.A. 315 Ellis St. Wichita, KS 67211 P 316.262.7271 F 316.262.1419 ENGINEERING SURVEYING PLANNING LANDSCAPE ARCHITECTURE</small>			
PROJECT NUMBER 468-84092	DESIGN AEO	DRAWN RDM	
REVISIONS:	APPROVED	DATE 03/08/2006	
	SCALE Noted	SHEET	
		13 OF 47	
<small>E:\eng\Auburn Hills 16th\SWD\SWD_SW303.dwg</small>			