

BENCHMARK:  
 "□" CUT ON TOP OF CURB  
 AT WEST LINE OF LOT 7,  
 BLOCK A, AUBURN HILLS 5TH  
 ADD.  
 ELEV. = 1395.13 NGVD29

DISC IN BACK OF CURB,  
 NORTH OF FRONT CORNER  
 COMMON TO LOTS 23 AND 24,  
 BLOCK D, AUBURN HILLS 12TH  
 ADD.  
 ELEV. = 1379.24 NGVD29

"□" CUT ON CENTER OF  
 CATCH BASIN, NORTH OF LOT  
 CORNER COMMON TO LOTS 1  
 AND 15, BLOCK B, AUBURN  
 HILLS 14TH ADD.  
 ELEV. = 1381.05 NGVD29

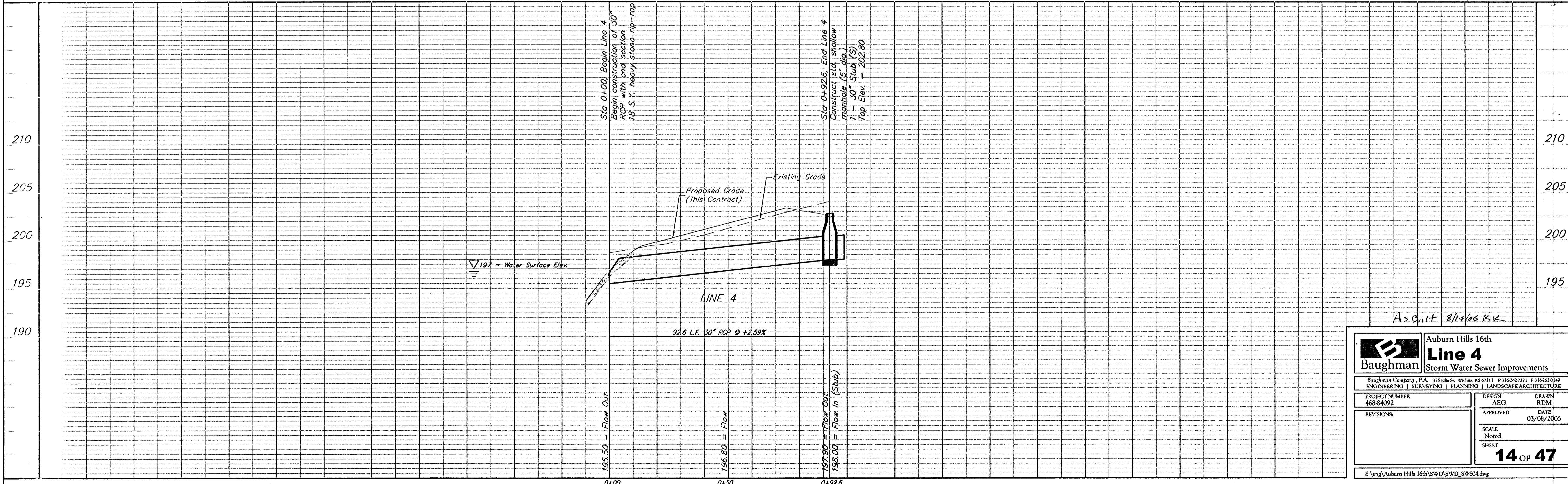
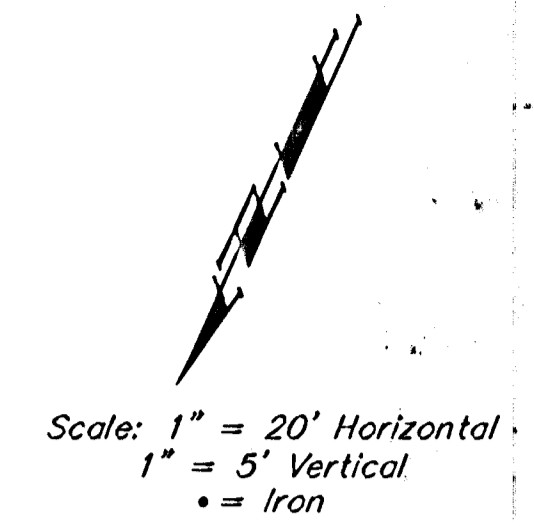
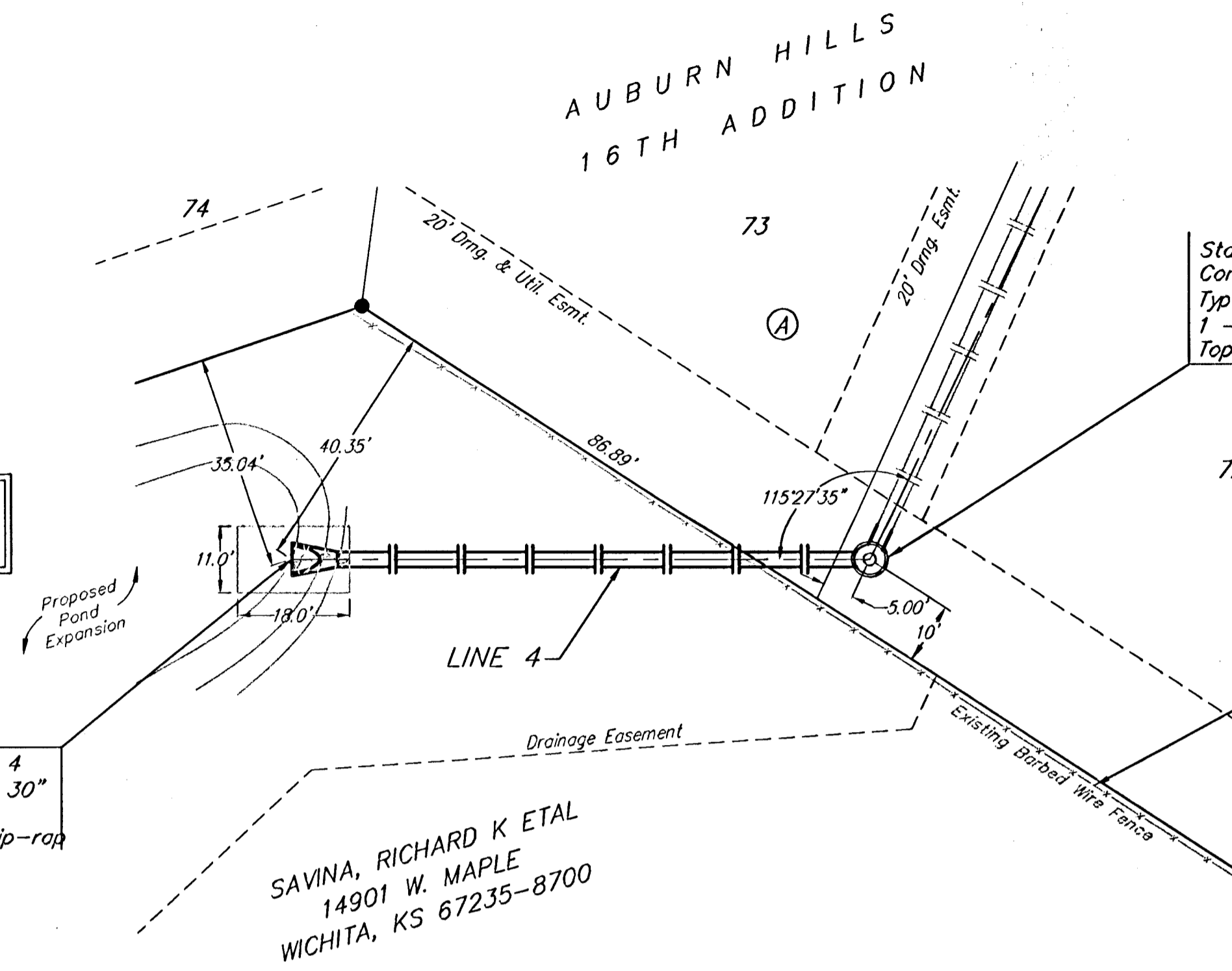
Existing Pond Data:  
 Static WS elev. = 197.0  
 100-yr WS elev. = 200.8

Sta 0+00, Begin Line 4  
 Begin construction of 30"  
 RCP with end section  
 18 S.Y. heavy stone rip-rap

Sta 0+92.6, End Line 4  
 Construct std shallow  
 Type P manhole (5' dia.)  
 1 - 30" Stub (S) w/ plug  
 Top Elev. = 202.80

Contractor shall remove and  
 replace existing barbed wire fence  
 as necessary. Cost to  
 be included in "Site Clearing  
 and Restoration"

Remove trees only as necessary  
 for construction and only with  
 permission of Developer or  
 Baughman Co. Cost of removal  
 to be incidental to lump sum  
 bid item "Site Clearing &  
 Restoration".



<b>Baughman</b>		Auburn Hills 16th <b>Line 4</b> Storm Water Sewer Improvements	
Baughman Company, P.A. 315 8th St. Wichita, KS 67211 P 316-263-7221 F 316-263-7149 ENGINEERING   SURVEYING   PLANNING   LANDSCAPE ARCHITECTURE			
PROJECT NUMBER 460-84092	DESIGN AEG	DRAWN RDM	DATE 03/08/2006
REVISIONS	APPROVED	SCALE Noted	SHEET <b>14 OF 47</b>
E:\eng\Auburn Hills 16th\SWD\SWD_SW504.dwg			