

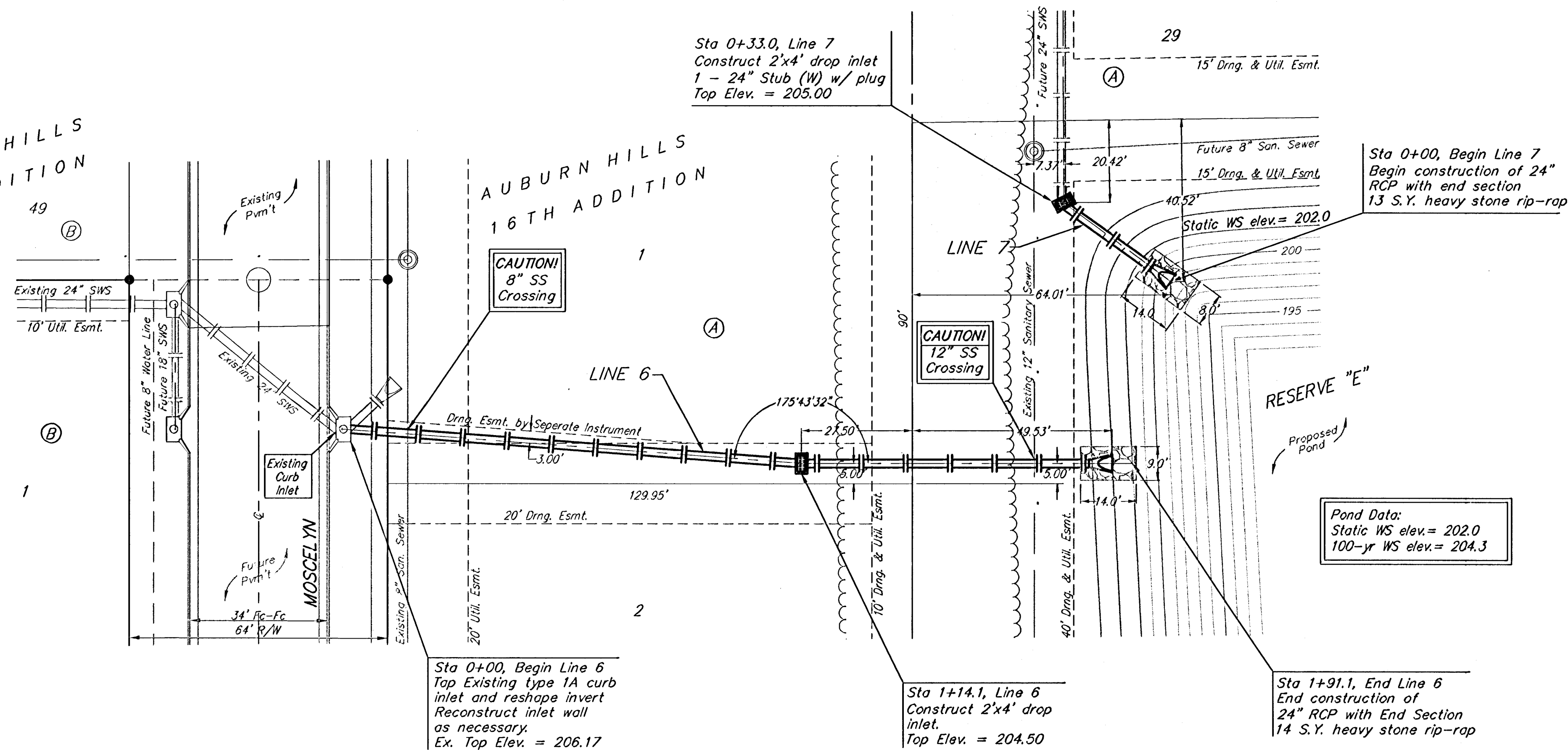
BENCHMARK:  
 "□" CUT ON TOP OF CURB  
 AT WEST LINE OF LOT 7,  
 BLOCK A, AUBURN HILLS 5TH  
 ADD.  
 ELEV. = 1395.13 NGVD29

DISC IN BACK OF CURB,  
 NORTH OF FRONT CORNER  
 COMMON TO LOTS 23 AND 24,  
 BLOCK D, AUBURN HILLS 12TH  
 ADD.  
 ELEV. = 1379.24 NGVD29

"□" CUT ON CENTER OF  
 CATCH BASIN, NORTH OF LOT  
 CORNER COMMON TO LOTS 1  
 AND 15, BLOCK B, AUBURN  
 HILLS 14TH ADD.  
 ELEV. = 1381.05 NGVD29

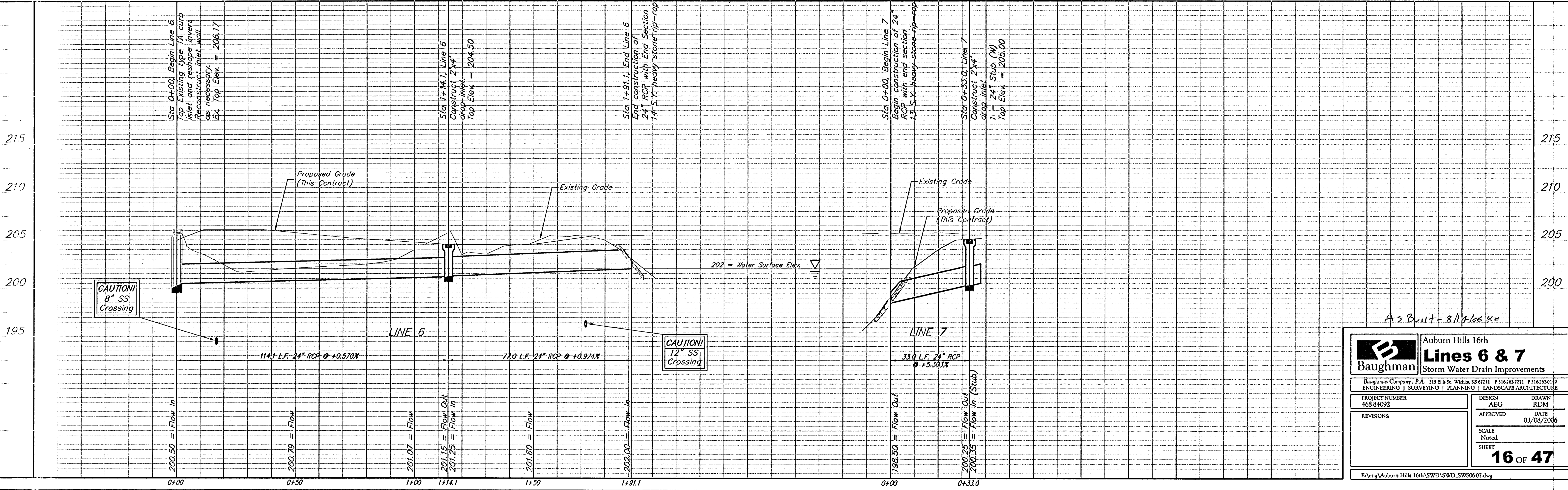
AUBURN HILLS  
 5TH ADDITION

AUBURN HILLS  
 16TH ADDITION



Scale: 1" = 20' Horizontal  
 1" = 5' Vertical  
 • = Iron

Contractor to Verify Location  
 & Flow of Existing Curb Inlet  
 Prior to Construction. Existing  
 pipe and end section must be  
 removed and disposed of.



As Built - 8/14/06 RKE

		<b>Auburn Hills 16th</b> <b>Lines 6 &amp; 7</b> <b>Storm Water Drain Improvements</b>	
<small>Baughman Company, P.A. 315 Ella St. Wilkes, KS 67111 P 316-262-1211 F 316-262-1049        ENGINEERING   SURVEYING   PLANNING   LANDSCAPE ARCHITECTURE</small>			
PROJECT NUMBER 468-84092	DESIGN AEG	DRAWN RDM	DATE 03/08/2006
REVISIONS:	APPROVED	SCALE Noted	SHEET <b>16 OF 47</b>
<small>E:\eng\Auburn Hills 16th\SWD\SWD_SW50607.dwg</small>			