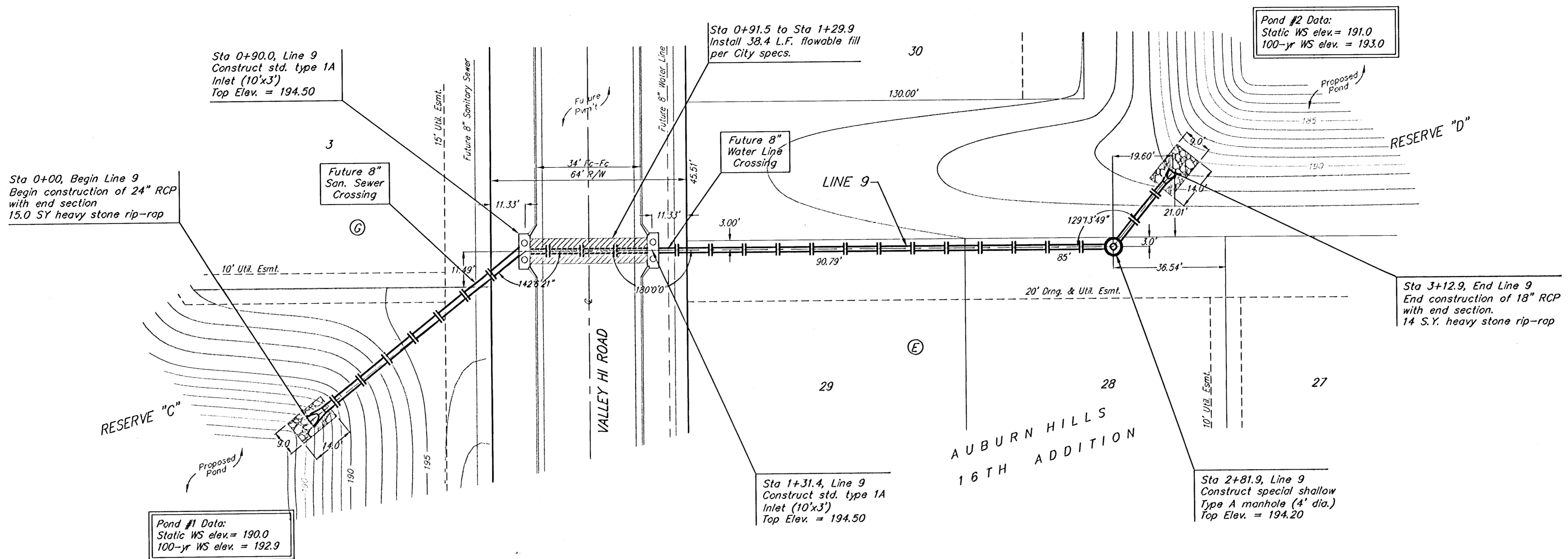


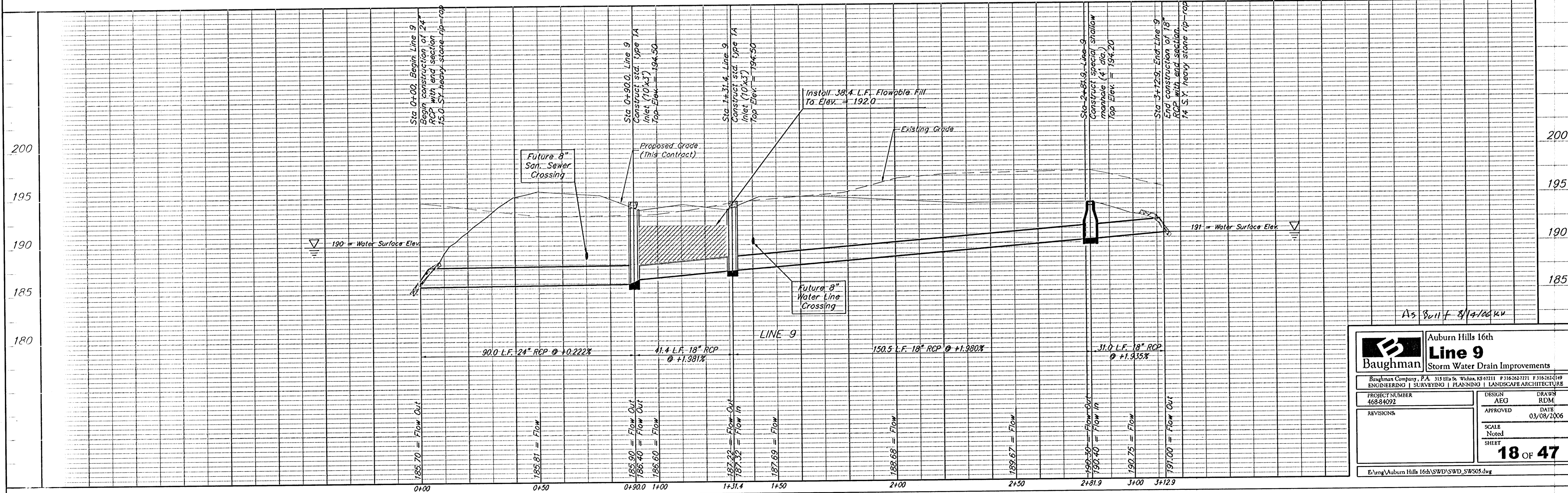
BENCHMARK:  
 "□" CUT ON TOP OF CURB  
 AT WEST LINE OF LOT 7,  
 BLOCK A, AUBURN HILLS 5TH  
 ADD.  
 ELEV. = 1395.13 NGVD29

DISC IN BACK OF CURB,  
 NORTH OF FRONT CORNER  
 COMMON TO LOTS 23 AND 24,  
 BLOCK D, AUBURN HILLS 12TH  
 ADD.  
 ELEV. = 1379.24 NGVD29

"□" CUT ON CENTER OF  
 CATCH BASIN, NORTH OF  
 CORNER COMMON TO LOTS 1  
 AND 15, BLOCK B, AUBURN  
 HILLS 14TH ADD.  
 ELEV. = 1381.05 NGVD29



Scale: 1" = 20' Horizontal  
 1" = 5' Vertical  
 • = Iron



As Built 8/14/06 KVV

|  |  |   |                    |
|--|--|---|--------------------|
|  |  | <b>Auburn Hills 16th</b><br><b>Line 9</b><br>Storm Water Drain Improvements |                    |
| <small>Baughman Company, P.A. 315 West St. Woburn, MA 01897 P 617-262-7771 F 617-262-7149<br/>         ENGINEERING   SURVEYING   PLANNING   LANDSCAPE ARCHITECTURE</small> |  |   |                    |
| PROJECT NUMBER<br>468-84092  | DESIGN<br>AEG                              | DRAWN<br>RDM  | DATE<br>03/08/2006 |
| REVISIONS:   | SCALE<br>Noted<br>SHEET<br><b>18 OF 47</b> |   |                    |
| <small>E:\eng\Auburn Hills 16th\SWD\SWD_SW505.dwg</small>  |  |   |                    |