

BENCHMARK:
 "□" CUT ON TOP OF CURB
 AT WEST LINE OF LOT 7,
 BLOCK A, AUBURN HILLS 5TH
 ADD.
 ELEV. = 1395.13 NGVD29

DISC IN BACK OF CURB,
 NORTH OF FRONT CORNER
 COMMON TO LOTS 23 AND 24,
 BLOCK D, AUBURN HILLS 12TH
 ADD.
 ELEV. = 1379.24 NGVD29

"□" CUT ON CENTER OF
 CATCH BASIN, NORTH OF LOT
 CORNER COMMON TO LOTS 1
 AND 15, BLOCK B, AUBURN
 HILLS 14TH ADD.
 ELEV. = 1381.05 NGVD29

Contractor to Adjust Existing
 Manhole from Top Elev. = 192.60
 to Top Elev. = 191.60

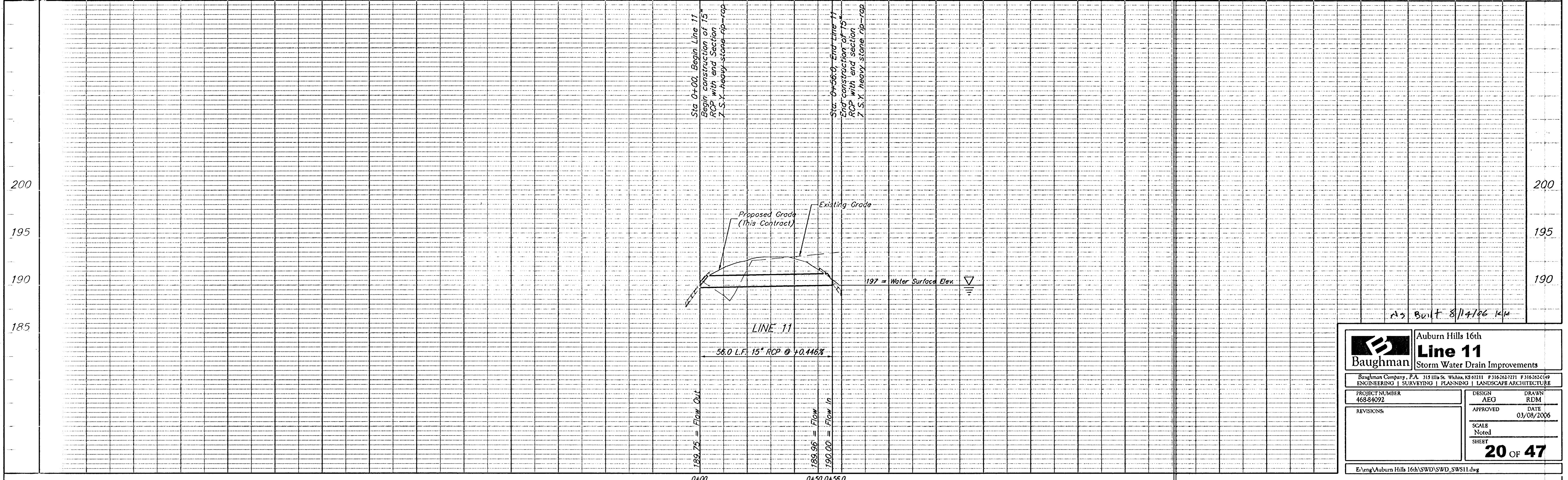
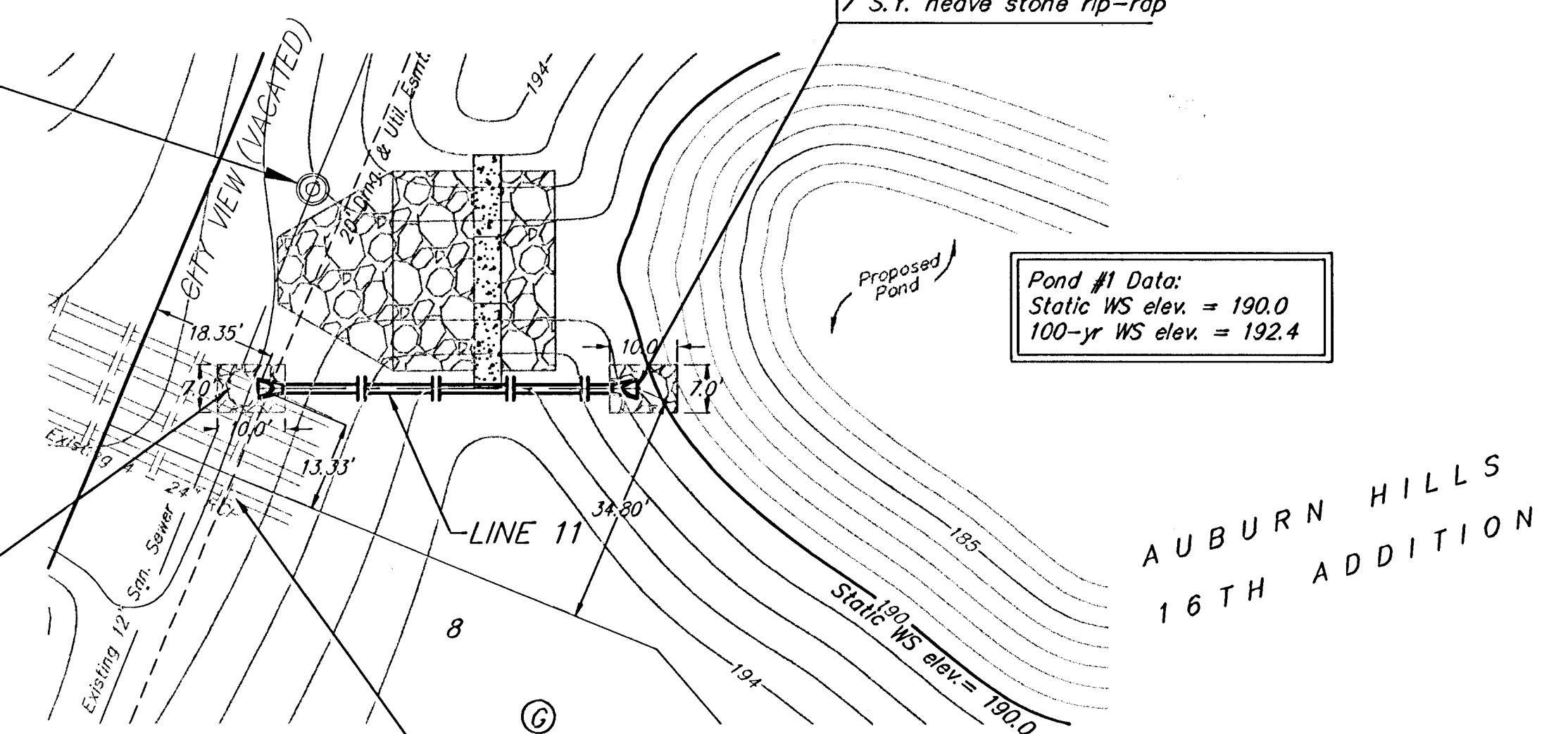
Sta. 0+56.0, End Line 11
 End construction of 15"
 RCP with end section
 7 S.Y. heavy stone rip-rap

Pond #1 Data:
 Static WS elev. = 190.0
 100-yr WS elev. = 192.4

Sta 0+00, Begin Line 11
 Begin construction of 15"
 RCP with end Section
 7 S.Y. heavy stone rip-rap

Contractor shall remove and
 dispose of existing 4 - 24"
 RCP. Cost to be included in
 "Site Clearing and Restoration"
 (Approx. 250 L.F. 24" RCP)

Scale: 1" = 20' Horizontal
 1" = 5' Vertical
 • = Iron



As Built 8/11/06 klu

Auburn Hills 16th Line 11 Storm Water Drain Improvements	
<small>Baughman Company, P.A. 313 Ella St. Wichita, KS 67211 P 316-263-7211 F 316-262-0149 ENGINEERING SURVEYING PLANNING LANDSCAPE ARCHITECTURE</small>	
PROJECT NUMBER 468-84022	DESIGN AEG
REVISIONS	DRAWN RDM
	APPROVED DATE 03/08/2006
	SCALE Noted
	SHEET 20 OF 47

E:\eng\Auburn Hills 16th\SWD\SWD_SWS11.dwg