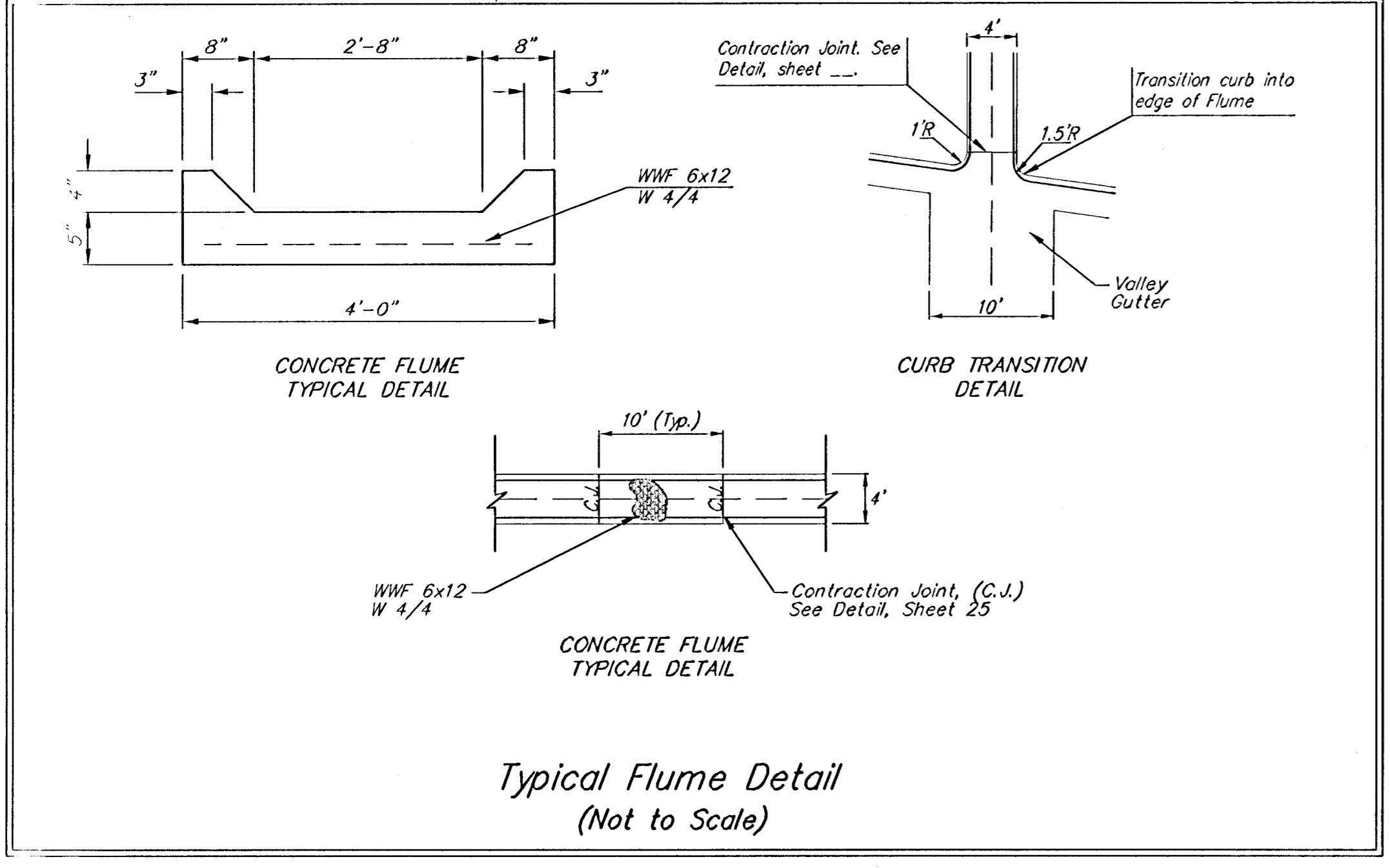
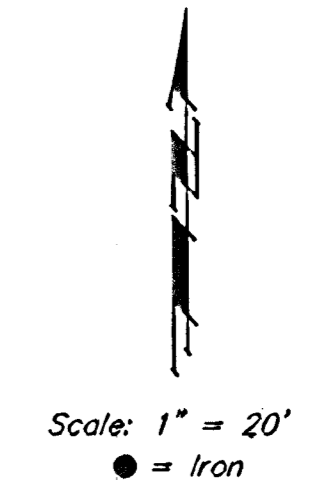
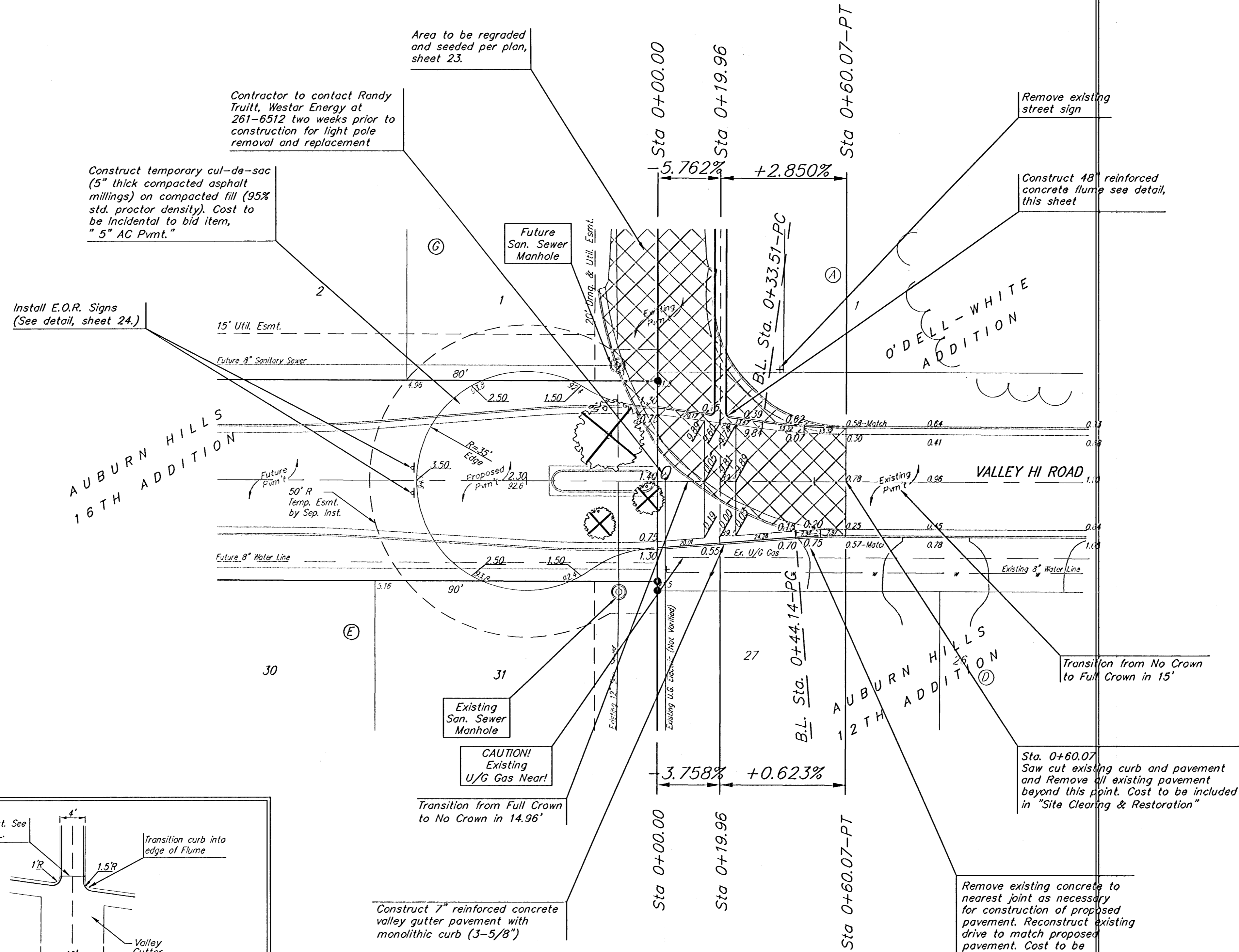


BENCHMARK:  
 "□" CUT ON TOP OF CURB  
 AT WEST LINE OF LOT 7,  
 BLOCK A, AUBURN HILLS 5TH  
 ADD.  
 ELEV. = 1395.13 NGVD29

DISC IN BACK OF CURB,  
 NORTH OF FRONT CORNER  
 COMMON TO LOTS 23 AND 24,  
 BLOCK D, AUBURN HILLS 12TH  
 ADD.  
 ELEV. = 1379.24 NGVD29

"□" CUT ON CENTER OF  
 CATCH BASIN, NORTH OF LOT  
 CORNER COMMON TO LOTS 1  
 AND 15, BLOCK B, AUBURN  
 HILLS 14TH ADD.  
 ELEV. = 1381.05 NGVD29



Typical Flume Detail  
 (Not to Scale)

Remove trees only as necessary  
 for street construction and only  
 with permission of Developer or  
 Baughman Co. Cost of removal  
 to be incidental to lump sum  
 bid item "Site Clearing &  
 Restoration".

Any Existing Sod and/or Sprinklers on  
 Lot 27, Block D Auburn Hills 12 Add.  
 disturbed or damaged during construction  
 shall be replaced to match existing  
 conditions prior to construction. Cost to  
 be included in "Site Clearing &  
 Restoration"

As Built 8/17/06

|                            |                |   |  |
|----------------------------|----------------|---|--|
|                            |                | <b>Auburn Hills 16th Addition<br/>         Valley Hi Road<br/>         Street Plan<br/>         Storm Water Drain Improvements</b>                          |  |
|                            |                | <small>Baughman Company, P.A. 315 Ellis St. Wichita, KS 67211 F31616210149<br/>         ENGINEERING   SURVEYING   PLANNING   LANDSCAPE ARCHITECTURE</small> |  |
| PROJECT NUMBER<br>46824092 | DESIGN<br>AEG  | DRAWN<br>RDM  |  |
| REVISIONS                  | APPROVED       | DATE<br>03/08/2006  |  |
|                            | SCALE<br>Noted |   |  |
|                            | SHEET          | <b>22 OF 47</b>   |  |

E:\Auburn Hills 16th\SWD\STR\_L.dwg