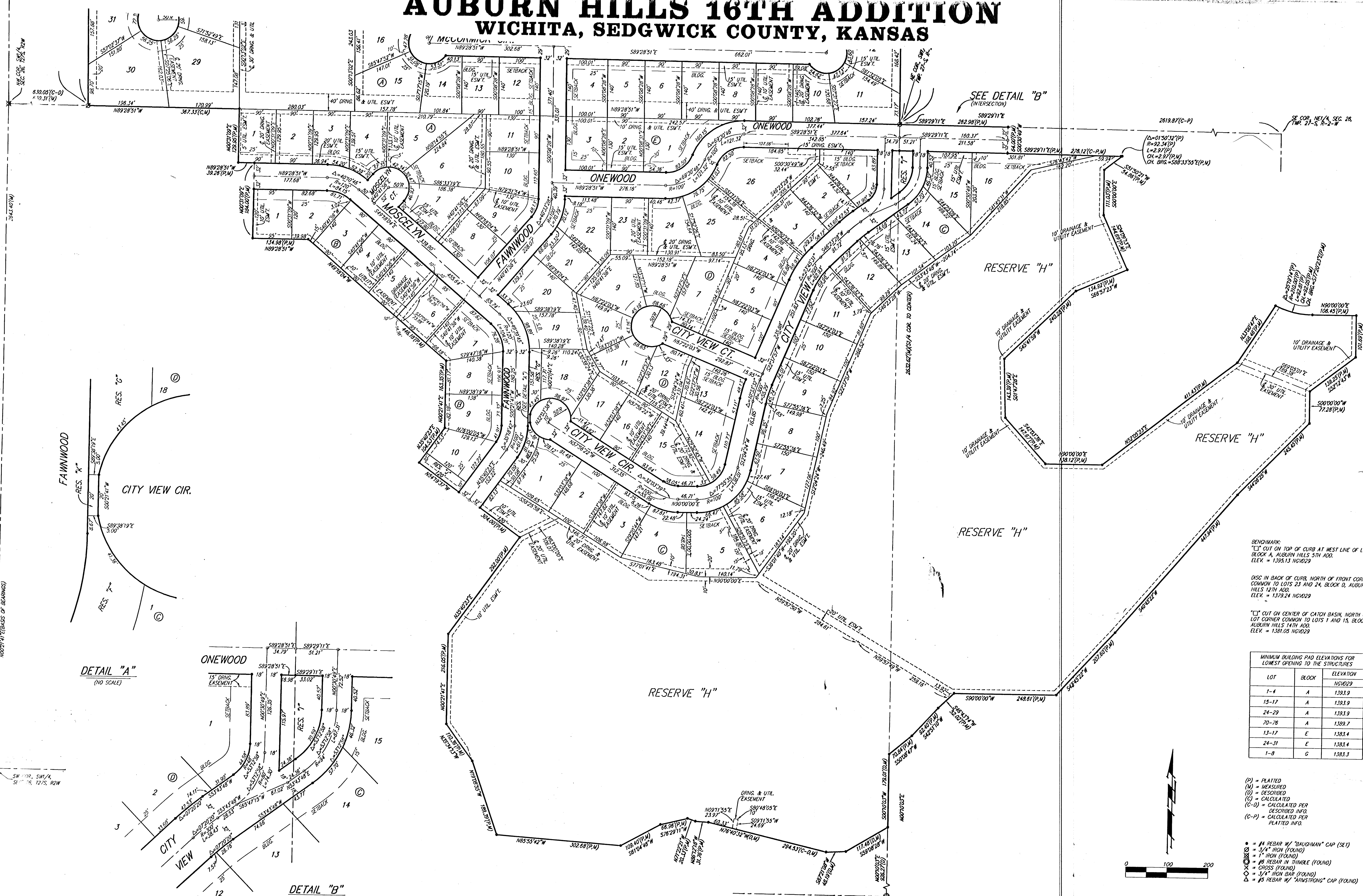
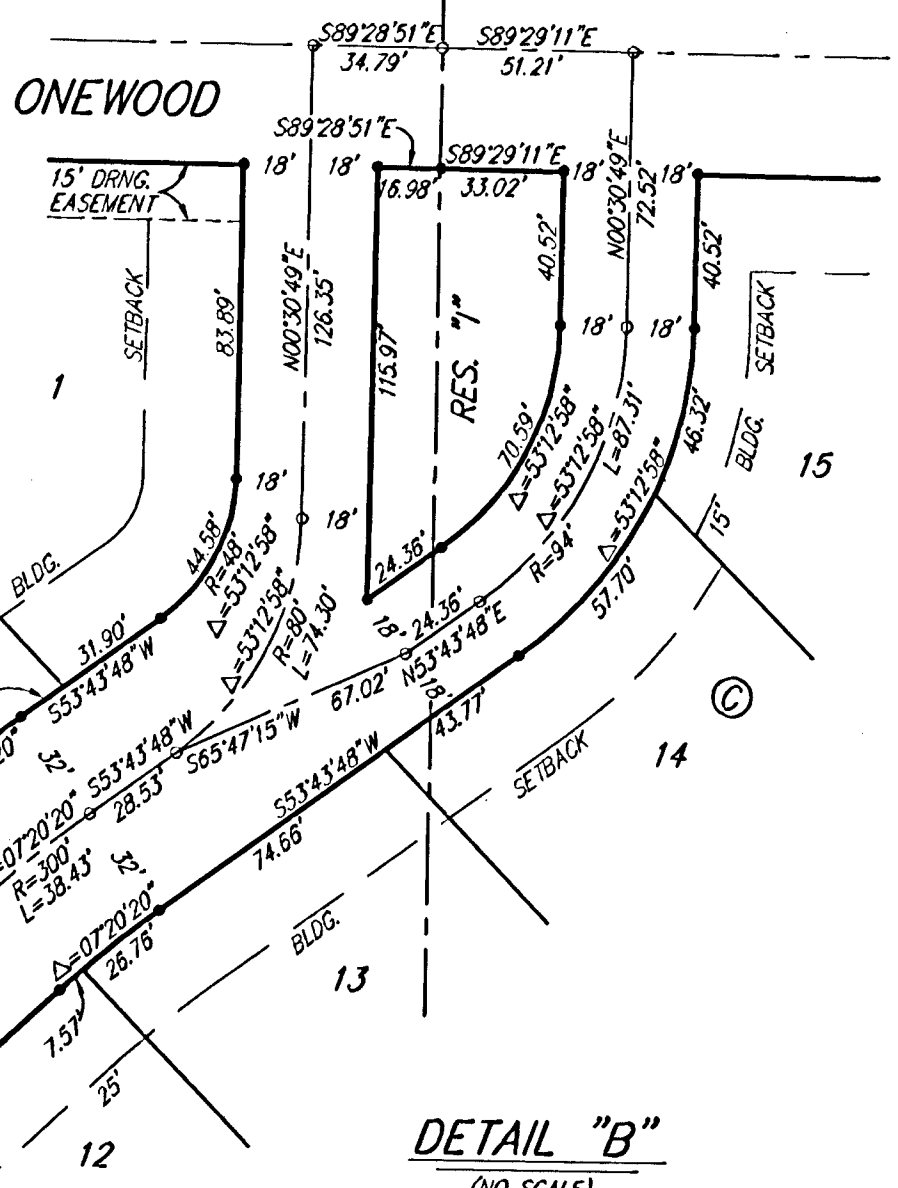
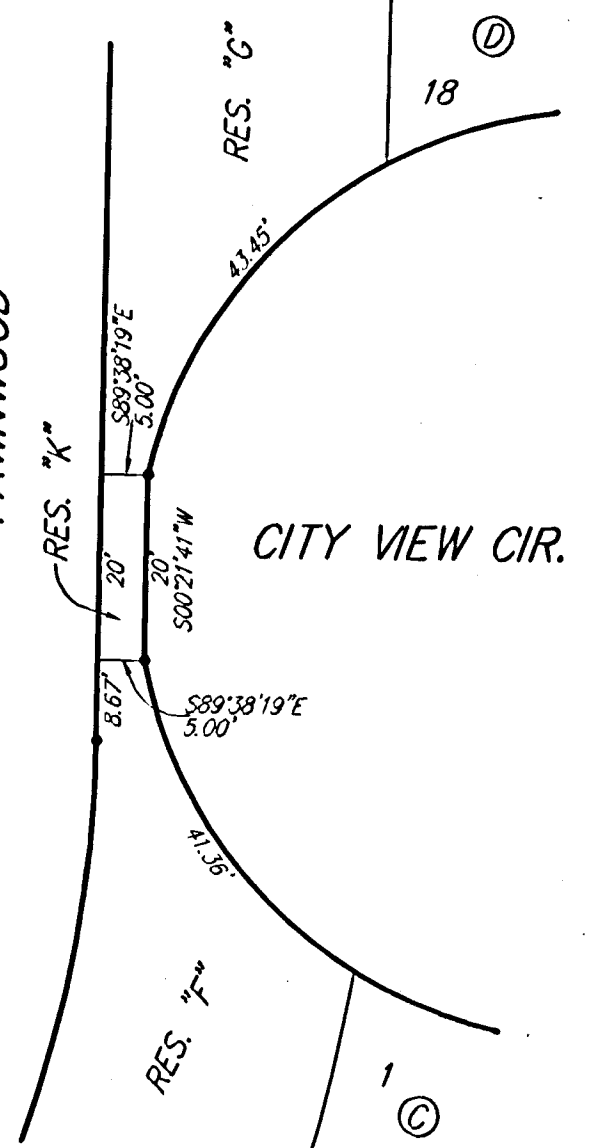


AUBURN HILLS 16TH ADDITION WICHITA, SEDGWICK COUNTY, KANSAS

526



SEE DETAIL "B"
(INTERSECTION)



BENCHMARK:
"X" CUT ON TOP OF CURB AT WEST LINE OF LOT 7,
BLOCK A, AUBURN HILLS 5TH ADD.
ELEV. = 1395.13 NGVD29

DISC IN BACK OF CURB, NORTH OF FRONT CORNER
COMMON TO LOTS 23 AND 24, BLOCK D, AUBURN
HILLS 14TH ADD.
ELEV. = 1378.24 NGVD29

"□" CUT ON CENTER OF CATCH BASIN, NORTH OF
LOT CORNER COMMON TO LOTS 1 AND 15, BLOCK B,
AUBURN HILLS 14TH ADD.
ELEV. = 1381.05 NGVD29

MINIMUM BUILDING PAD ELEVATIONS FOR LOWEST OPENING TO THE STRUCTURES		
LOT	BLOCK	ELEVATION
		NGVD29
1-4	A	1393.9
15-17	A	1393.9
24-29	A	1393.9
70-76	A	1389.7
13-17	E	1383.4
24-31	E	1383.4
1-8	G	1383.3

- (P) = PLATTED
- (M) = MEASURED
- (D) = DESCRIBED
- (C) = CALCULATED
- (C-D) = CALCULATED PER DESCRIBED INFO.
- (C-P) = CALCULATED PER PLATTED INFO.
- = #4 REBAR W/ "BAUGHMAN" CAP (SET)
- ⊙ = 3/4" IRON (FOUND)
- ⊙ = IRON (FOUND)
- ⊙ = #8 REBAR IN THIMBLE (FOUND)
- ⊙ = CROSS (FOUND)
- ⊙ = 3/4" IRON BAR (FOUND)
- ⊙ = #5 REBAR W/ "ARMSTRONG" CAP (FOUND)