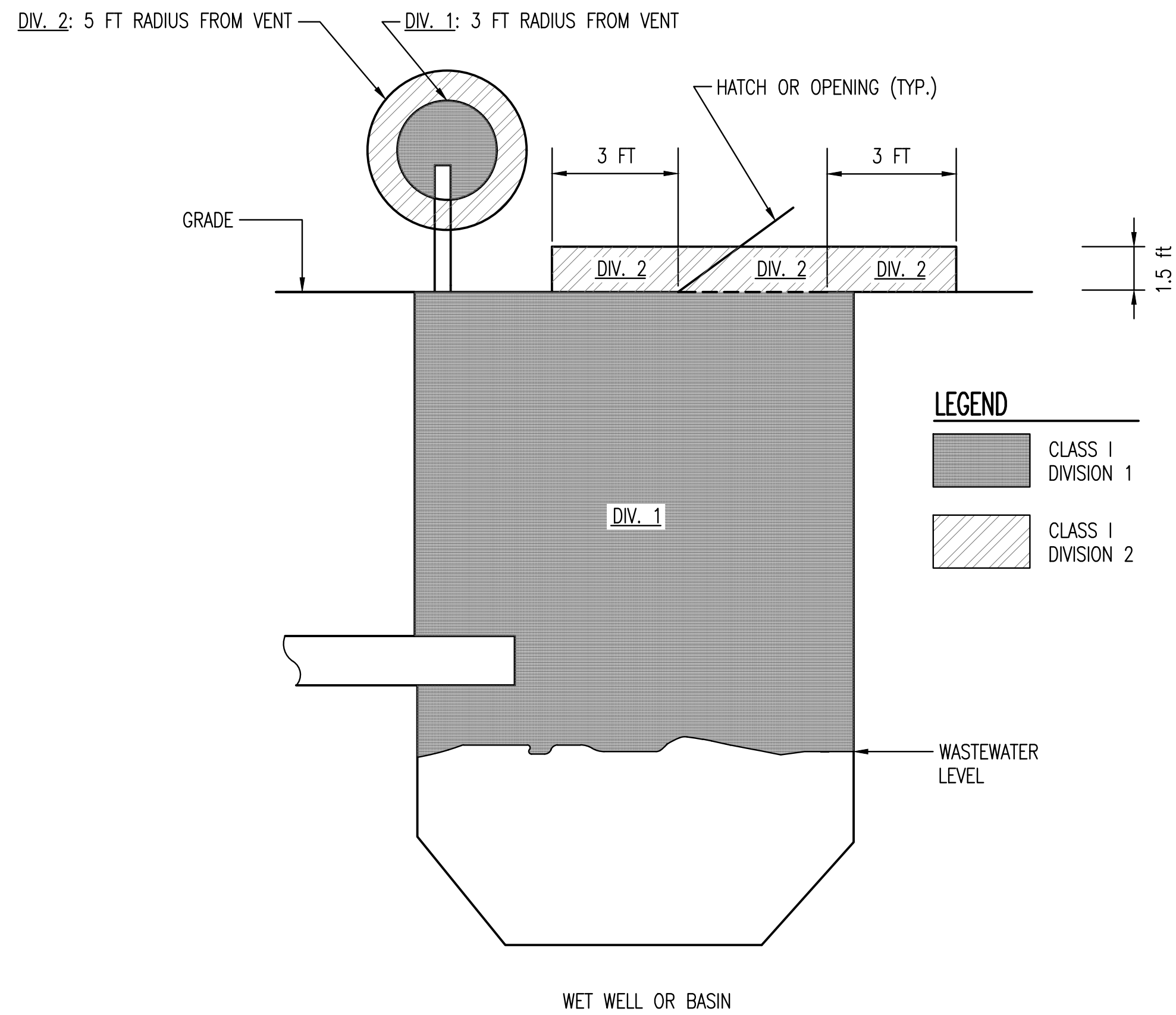
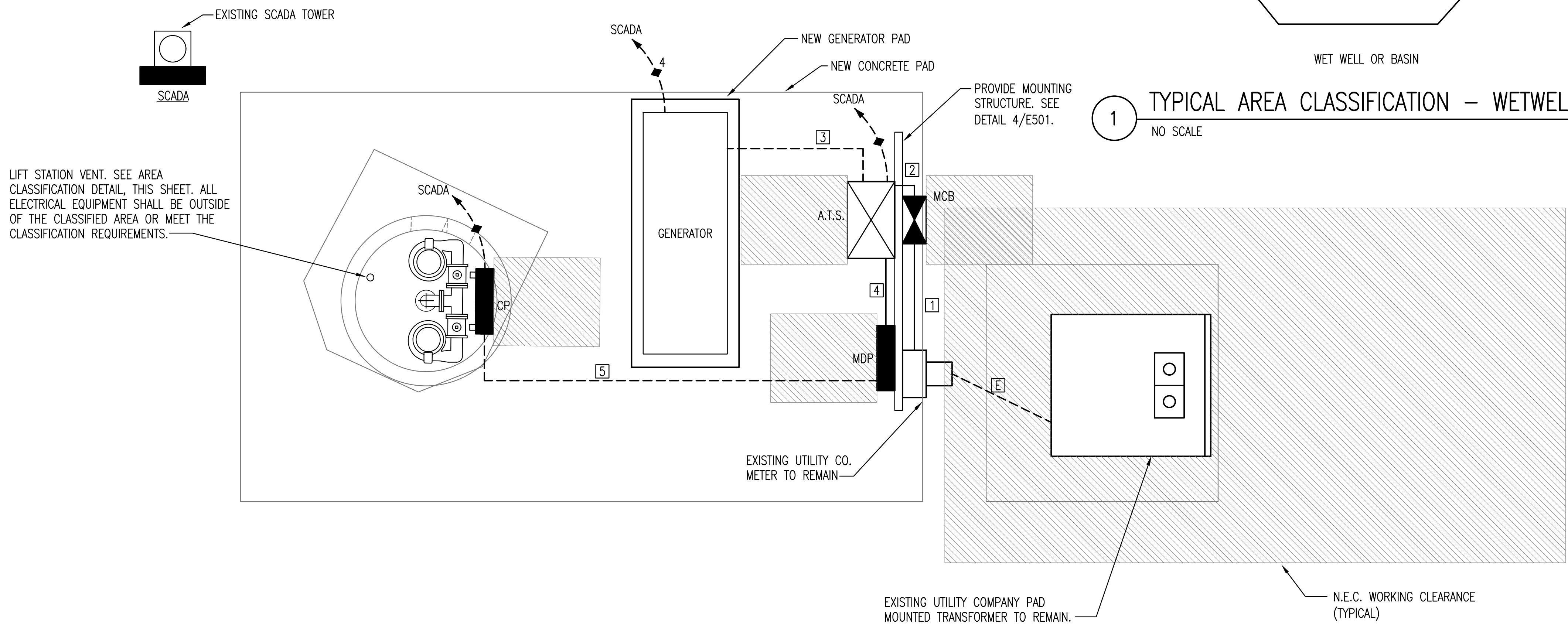


ELECTRICAL SITE PLAN NOTES:

- UNLESS OTHERWISE NOTED, ALL CONDUIT ROUTED ON SITE SHALL BE 1" MINIMUM.
- ALL RISERS SHALL BE PVC COATED RIGID GALVANIZED STEEL (RGS) ALL ELLS BELOW GRADE SHALL BE PVC COATED RIGID GALVANIZED STEEL (RGS). PROVIDE WITH PVC TO STEEL ADAPTER(S) AS NECESSARY. (THIS REQUIREMENT SHALL NOT APPLY TO FIXTURE POLE BASES)
- ALL ELECTRICAL WORK AND FEES ASSOCIATED WITH UTILITIES SHALL BE VERIFIED AND COORDINATED WITH LOCAL SERVICE PROVIDER PRIOR TO BID.
- CONTRACTOR SHALL REFERENCE ALL RELATED CONTRACT DOCUMENTS, SITE SURVEY, AND OTHER RESOURCES FOR POSSIBLE CONFLICTS WITH OTHER UNDERGROUND UTILITIES. AT UTILITY CROSSINGS, CONTRACTOR SHALL VERIFY UTILITY DEPTHS AND COORDINATE CONDUIT ROUTING AS NECESSARY.
- CONTRACTOR SHALL VERIFY AND COORDINATE EXISTING CONDITIONS OF PROJECT SITE PRIOR TO BID.



1 TYPICAL AREA CLASSIFICATION - WETWELL (INDUSTRIAL)
NO SCALE NOTE: NFPA 820 SEC 4.2



A ELECTRICAL SITE POWER PLAN
0' 1' 2' 3' 1/2"=1'-0"

SAVED: 3/9/2022 1:00:03 PM BY BEN CHAPLIN
 PLOTTED: 3/9/2022 1:53:21 PM BY BEN CHAPLIN
 U:\WICHITA-CIVIL\2021\17043007\TELECDRAWINGS\SSMIE401 ELECTRICAL POWER PLAN.DWG



SANITARY SEWER IMPROVEMENTS
 LIFT STATION NO. 16
 AT
 POPLAR STREET,
 SOUTH OF E. 37TH STREET N
 GARY JANZEN, P.E. - CITY ENGINEER
 CITY OF WICHITA PROJECT NO. 468-2020-019216 S0013

Issue:	

JOB NO.	217043-007
DATE	MARCH 2022
PM	RWW
DESIGNED BY	DCG
DRAWN BY	BAC
CHECKED BY	RWW

ELECTRICAL SITE POWER PLAN

E401