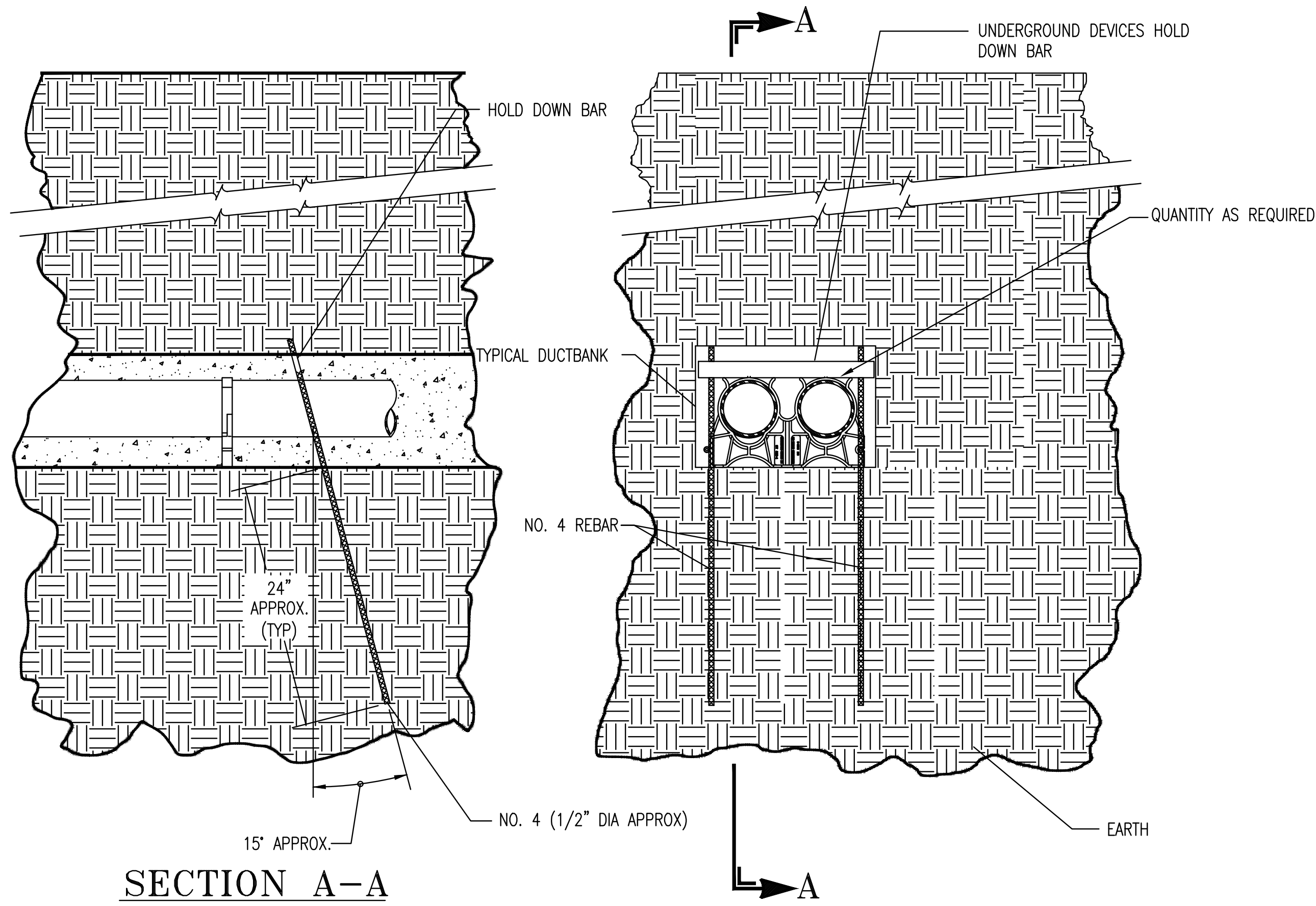
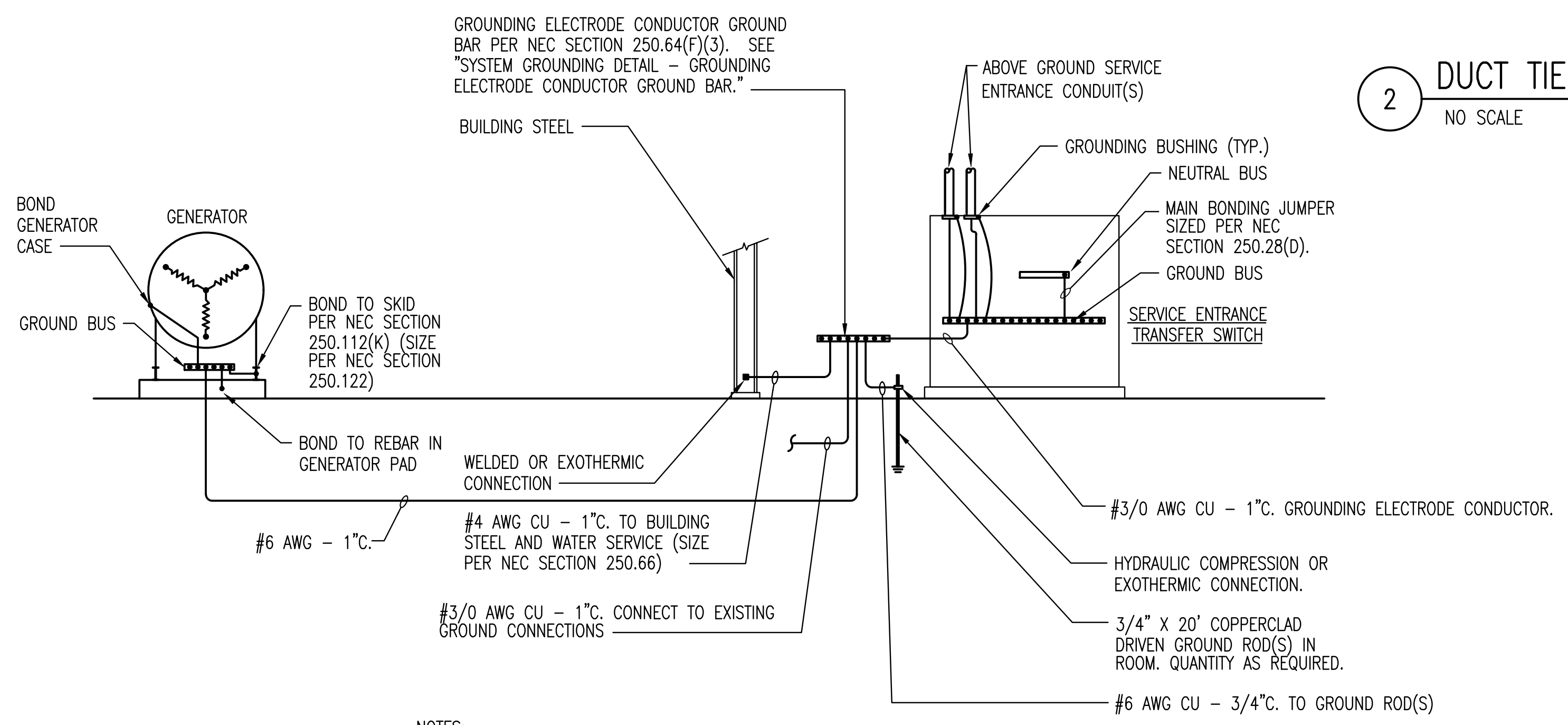


1 DUCTBANK SECTION
NO SCALE



SECTION A-A



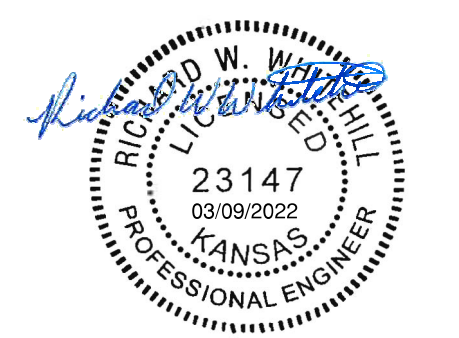
2 DUCT TIE-DOWN DETAIL
NO SCALE

3 SYSTEM GROUNDING DETAIL - PANEL WITH 3-POLE ATS
NO SCALE

DESIGNER NOTE: SIZE GROUNDING ELECTRODE CONDUCTORS AND BONDING JUMPERS TO BUILDING STEEL AND WATER SERVICE PER NEC SECTION 250.66

- NOTES:
1. PROVIDE OTHER GROUNDING CONNECTIONS AS SPECIFIED IN NEC SECTION 250.50.
 2. LABEL EACH GROUNDING ELECTRODE CONDUCTOR AND BONDING JUMPER.
 3. WHERE CONDUCTORS ARE ROUTED IN FERROUS CONDUIT, BOND BOTH ENDS OF THE CONDUIT TO THE CONDUCTOR.

U:\WICHITA-CIVIL\2022\17043007\TELECDRAWINGS\SSMIE502 ELECTRICAL DETAILS.DWG
 PLOTTED 3/9/2022 1:53:31 PM BY BEN CHAPLIN
 SAVED 3/9/2022 1:47:20 PM BY BEN CHAPLIN



SANITARY SEWER IMPROVEMENTS
 LIFT STATION NO. 16
 AT
 POPLAR STREET,
 SOUTH OF E. 37TH STREET N
 GARY JANZEN, P.E. - CITY ENGINEER
 CITY OF WICHITA PROJECT NO. 468-2020-019216 S0013

Issue:	
JOB NO.	217043-007
DATE	MARCH 2022
PM	RWW
DESIGNED BY	DCG
DRAWN BY	BAC
CHECKED BY	RWW

ELECTRICAL DETAILS

E502