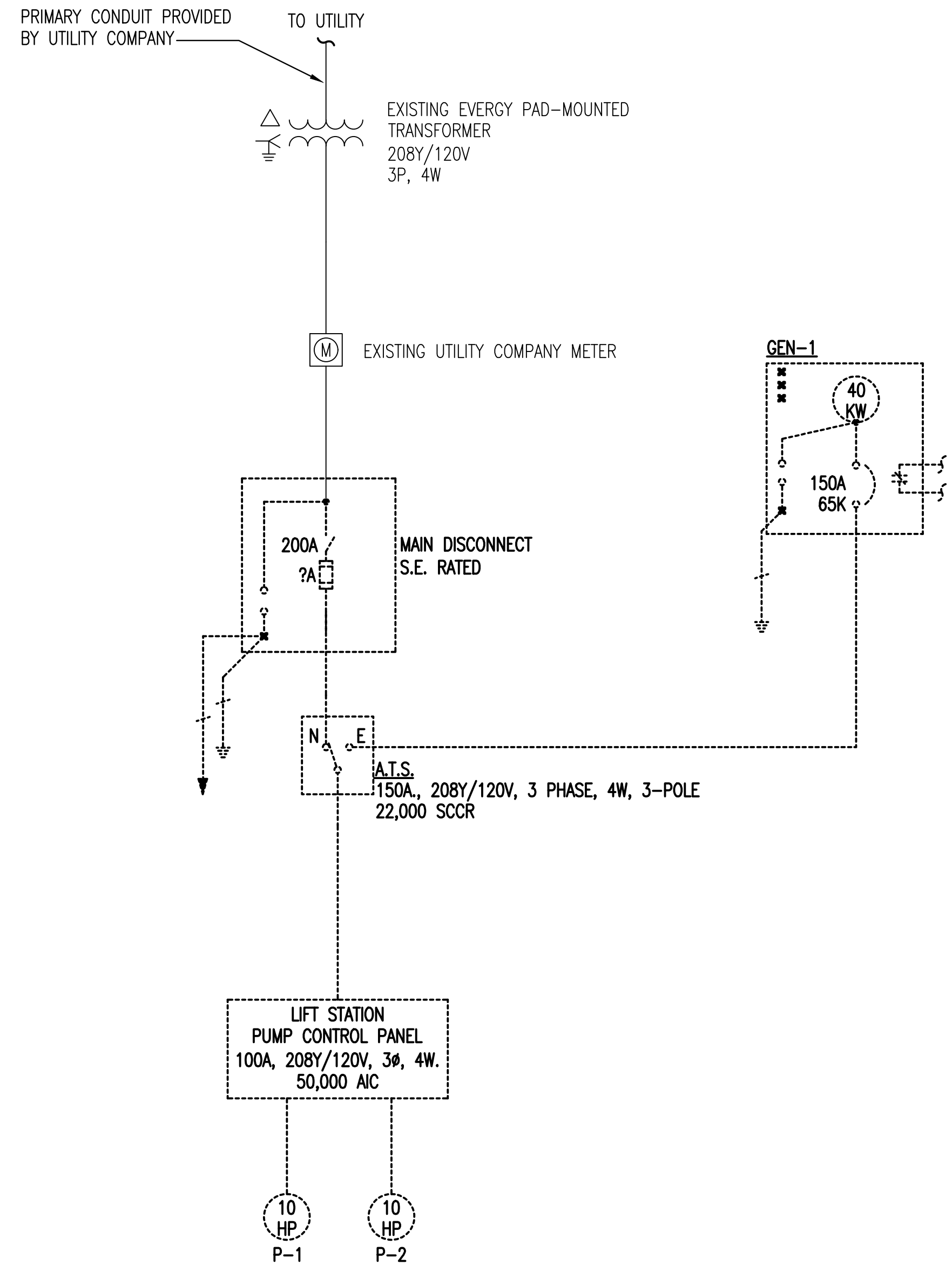


U:\WICHITA-CIVIL\2021\21704300\TELECDRAWINGS\SSMIE601 ELECTRICAL ONE-LINE DIAGRAM.DWG
 PLOTTED 3/9/2022 1:53:36 PM BY BEN CHAPLIN
 SAVED 3/9/2022 12:55:33 PM BY BEN CHAPLIN

GENERAL ONE-LINE DIAGRAM NOTES:

- UNLESS OTHERWISE NOTED, ALL CIRCUIT BREAKERS AND/OR SWITCHES ARE THREE POLE.
- ALL ELECTRICAL EQUIPMENT AND WIRING SHOWN IN A LIGHT LINE, IS EXISTING TO REMAIN.
- ALL ELECTRICAL EQUIPMENT AND WIRING SHOWN IN A DARK LINE, IS NEW WORK UNDER THIS CONTRACT.
- ALL ELECTRICAL EQUIPMENT AND WIRING SHOWN IN A DARK DASHED LINE, IS TO BE REMOVED UNDER THIS CONTRACT.

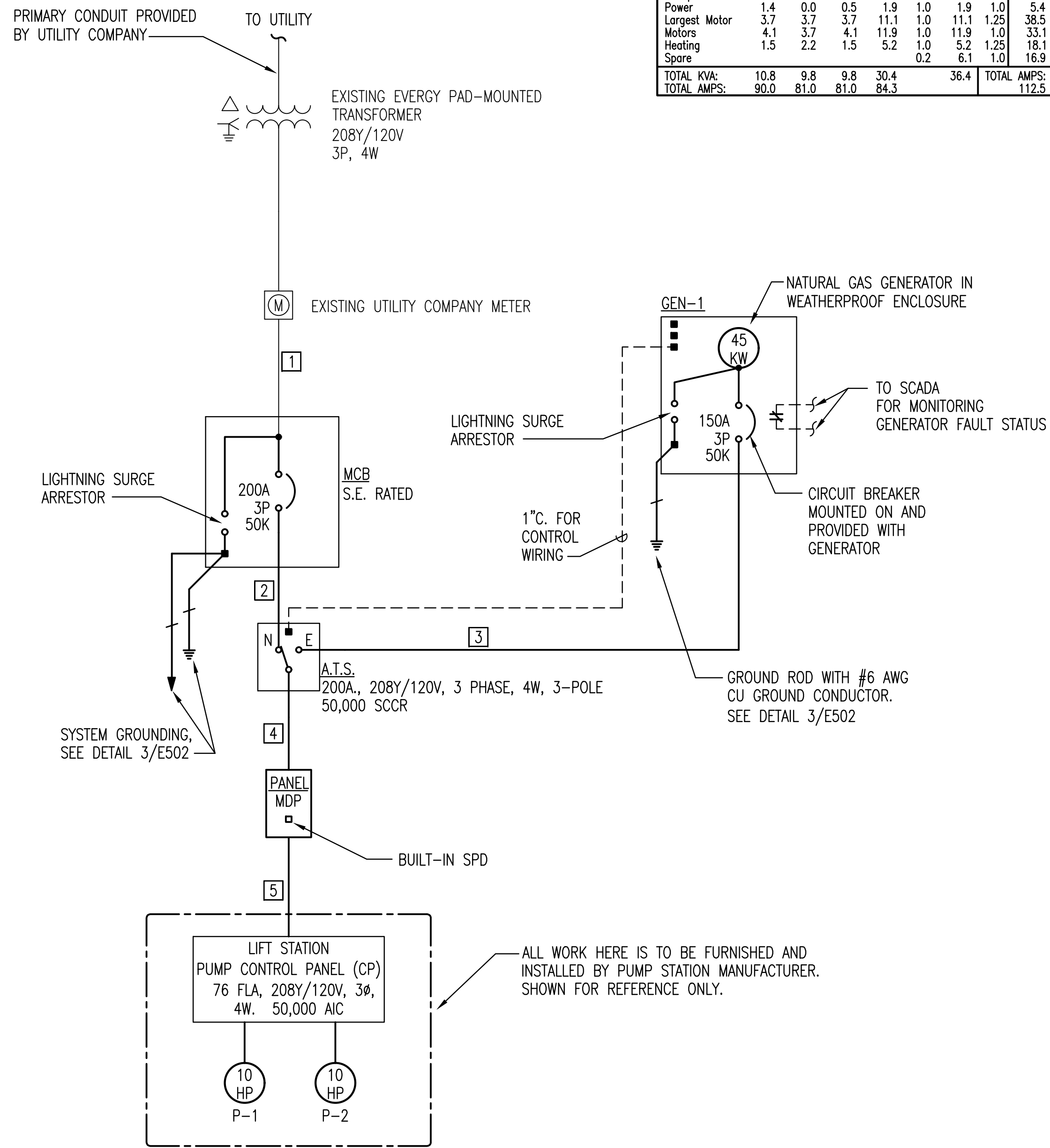


1 EXISTING ONE-LINE DIAGRAM

FEEDER SCHEDULE								
DESIG.	EQUIPMENT SERVED	CONDUCTORS			GROUND SIZE PER SET	ISOLATED GROUND SIZE	CONDUIT SIZE PER SET	SPARE CONDUIT
		SETS	NO.	SIZE				
1	CIRCUIT BREAKER: MCB	1	4	#3/0 AWG CU	#6	---	2-1/2" C.	---
2	ATS MAIN FEEDER	1	4	#3/0 AWG CU	#6	---	2-1/2" C.	---
3	ATS GENERATOR FEEDER	1	4	#1/0 AWG CU	#6	---	2" C.	---
4	PANELBOARD:MDP	1	4	#3/0 AWG CU	#6	---	2-1/2" C.	---
5	PUMP CONTROL PANEL:CP	1	4	#1 AWG CU	#6	---	2" C.	---
E	EXISTING 200A FEEDER TO REMAIN							

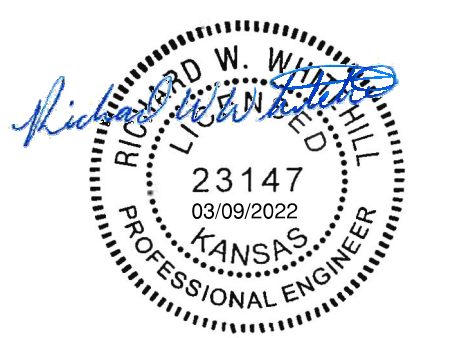
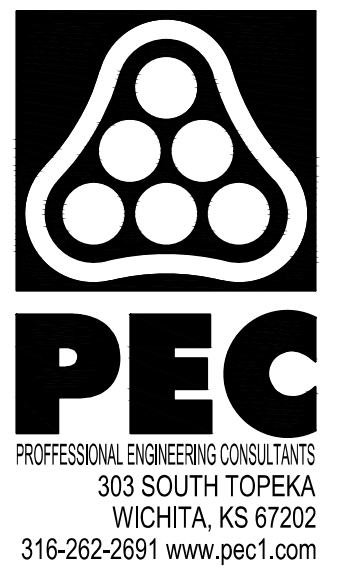
PANELBOARD: MDP											
208Y/120 VOLTS, 3 PHASE, 4 WIRE											
225 AMP MLO, SURFACE MTD.											
50000 AIC LABELED											
DIRC NO.	LOAD V. A.	LOAD TYPE	LOAD DESCRIPTION	AMP SIZE	PHASE	AMP SIZE	LOAD DESCRIPTION	LOAD TYPE	LOAD V. A.	DIRC NO.	
1	25916		PANELBOARD: CP	3	110	A	20	GEN BATT CHG	HEAT	720	2
3						B	20	GEN COOLANT HTR	HEAT	1500	4
5						C	20	ATS HEATER	HEAT	1500	6
7		SPR	SPARE	1	20	A	20	SCADA PANEL	HEAT	720	8
9		SPR	SPARE	1	20	B	20	SPARE	SPR		10
11		SPR	SPARE	1	20	C	20	SPARE	SPR		12
13		SPR	SPARE	1	20	A	20	SPARE	SPR		14
15		SPR	SPARE	1	20	B	20	SPARE	SPR		16
17		SPR	SPARE	1	20	C	20	SPARE	SPR		18
19		SPR	SPARE	1	20	A	20	SPARE	SPR		20
21		SPR	SPARE	1	20	B	20	SPARE	SPR		22
23		SPR	SPARE	1	20	C	20	SPARE	SPR		24

PANELBOARD: MDP	CONNECTED KVA:			DEMAND FACTOR	CONT. FACT	SIZING AMPS:					
	PH-A	PH-B	PH-C			TOTAL	PH-A	PH-B	PH-C		
Receptacles	0.0	0.2	0.0	0.2	1.0	0.2	1.0	0.5	0.0	1.5	0.0
Power	1.4	0.0	0.5	1.9	1.0	1.9	1.0	5.4	12.0	8.0	4.2
Largest Motor	3.7	3.7	3.7	11.1	1.0	11.1	1.25	38.5	38.5	38.5	38.5
Motors	4.1	3.7	4.1	11.9	1.0	11.9	1.0	33.1	34.3	30.8	34.3
Heating	1.5	2.2	1.5	5.2	1.0	5.2	1.25	18.1	15.6	23.1	15.6
Spare				0.2	6.1	1.0		16.9	16.9	16.9	
TOTAL KVA:	10.8	9.8	9.8	30.4		36.4		TOTAL AMPS:	PH-A	PH-B	PH-C
TOTAL AMPS:	90.0	81.0	81.0	84.3				112.5	117.3	110.8	109.5



2 PROPOSED ONE-LINE DIAGRAM

ALL WORK HERE IS TO BE FURNISHED AND INSTALLED BY PUMP STATION MANUFACTURER. SHOWN FOR REFERENCE ONLY.



SANITARY SEWER IMPROVEMENTS
LIFT STATION NO. 16
 AT
 POPLAR STREET,
 SOUTH OF E. 37TH STREET N
 GARY JANZEN, P.E. - CITY ENGINEER
 CITY OF WICHITA PROJECT NO. 468-2020-019216 S0013

Issue:	

JOB NO.	217043-007
DATE	MARCH 2022
PM	RWW
DESIGNED BY	DCG
DRAWN BY	BAC
CHECKED BY	RWW

ELECTRICAL ONE-LINE DIAGRAMS

E601