

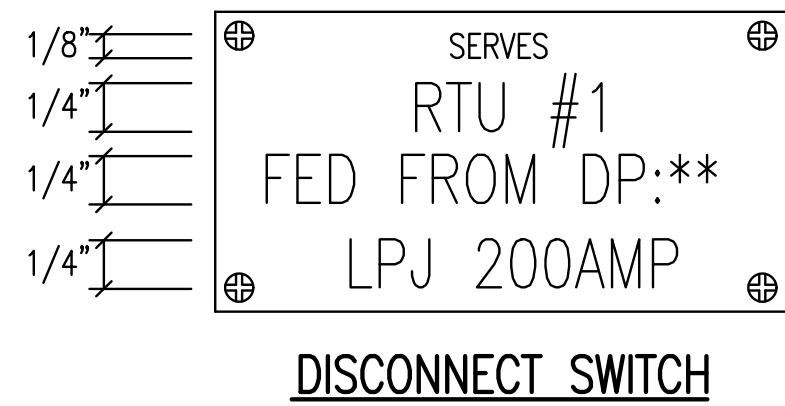
SANITARY SEWER IMPROVEMENTS
LIFT STATION NO. 23
 AT
W. 37TH STREET N AND PORTER AVE.
 GARY JANZEN, P.E. - CITY ENGINEER
 CITY OF WICHITA PROJECT NO. 468-2020-019218 S0015

Issue:	

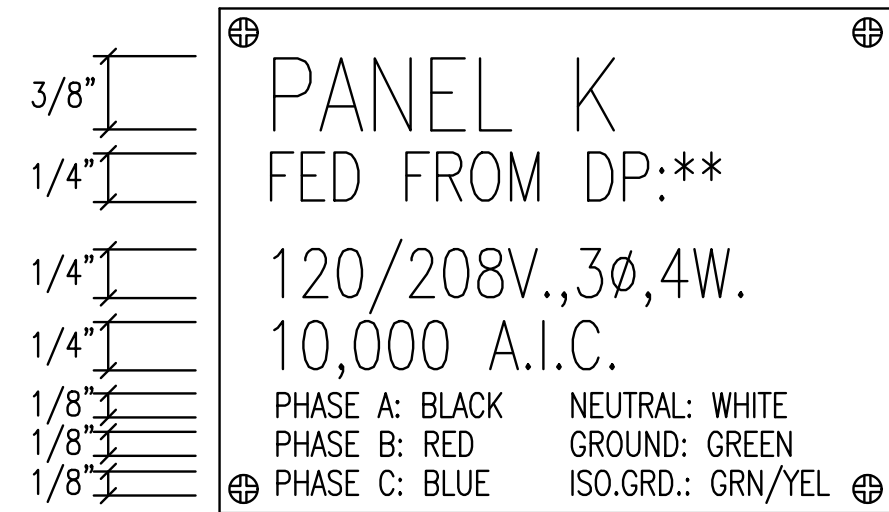
JOB NO.	217043-008
DATE	MARCH 2022
PM	RWW
DESIGNED BY	DCG
DRAWN BY	BAC
CHECKED BY	RWW

ELECTRICAL DETAILS

E501

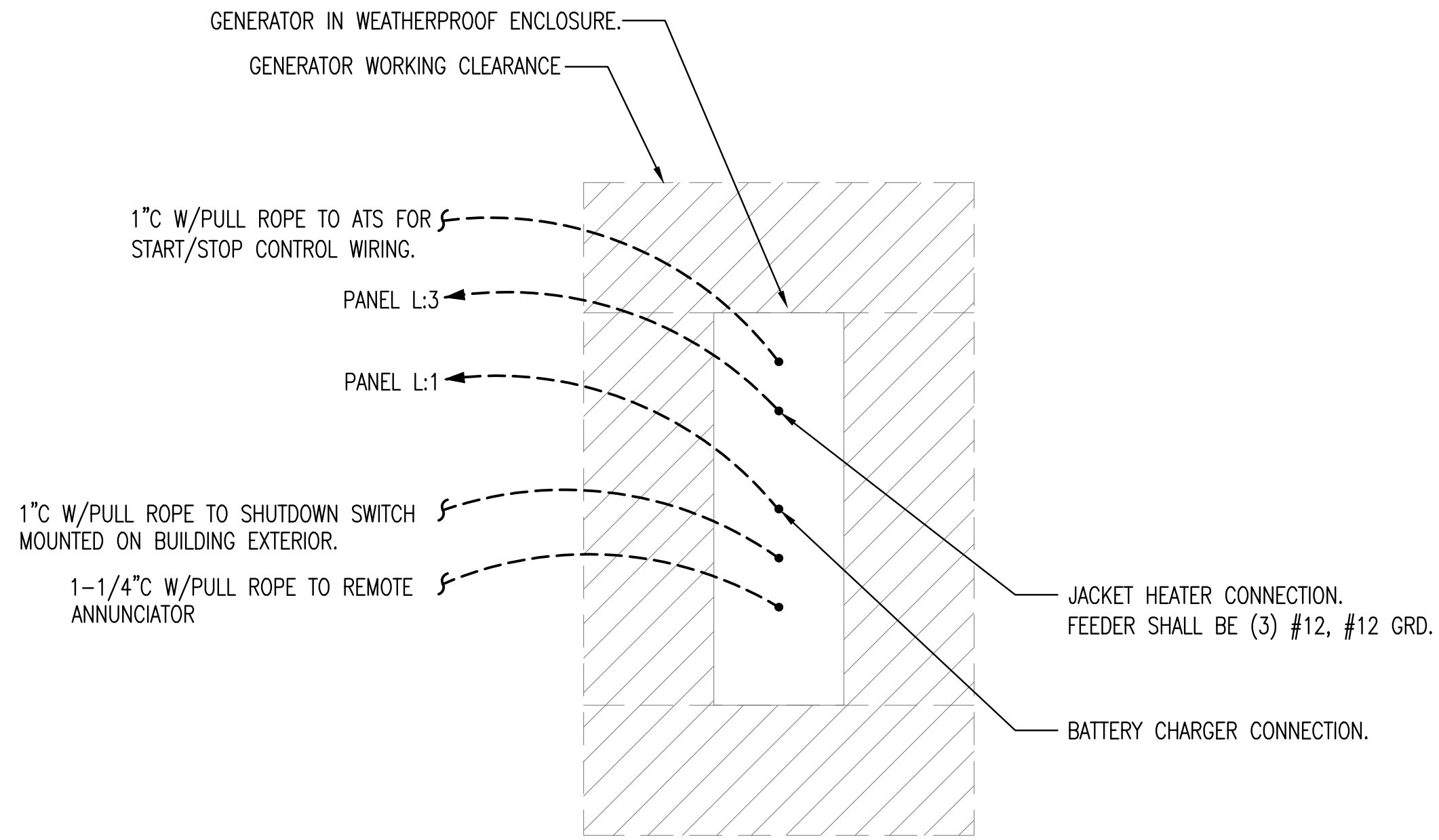


DISCONNECT SWITCH



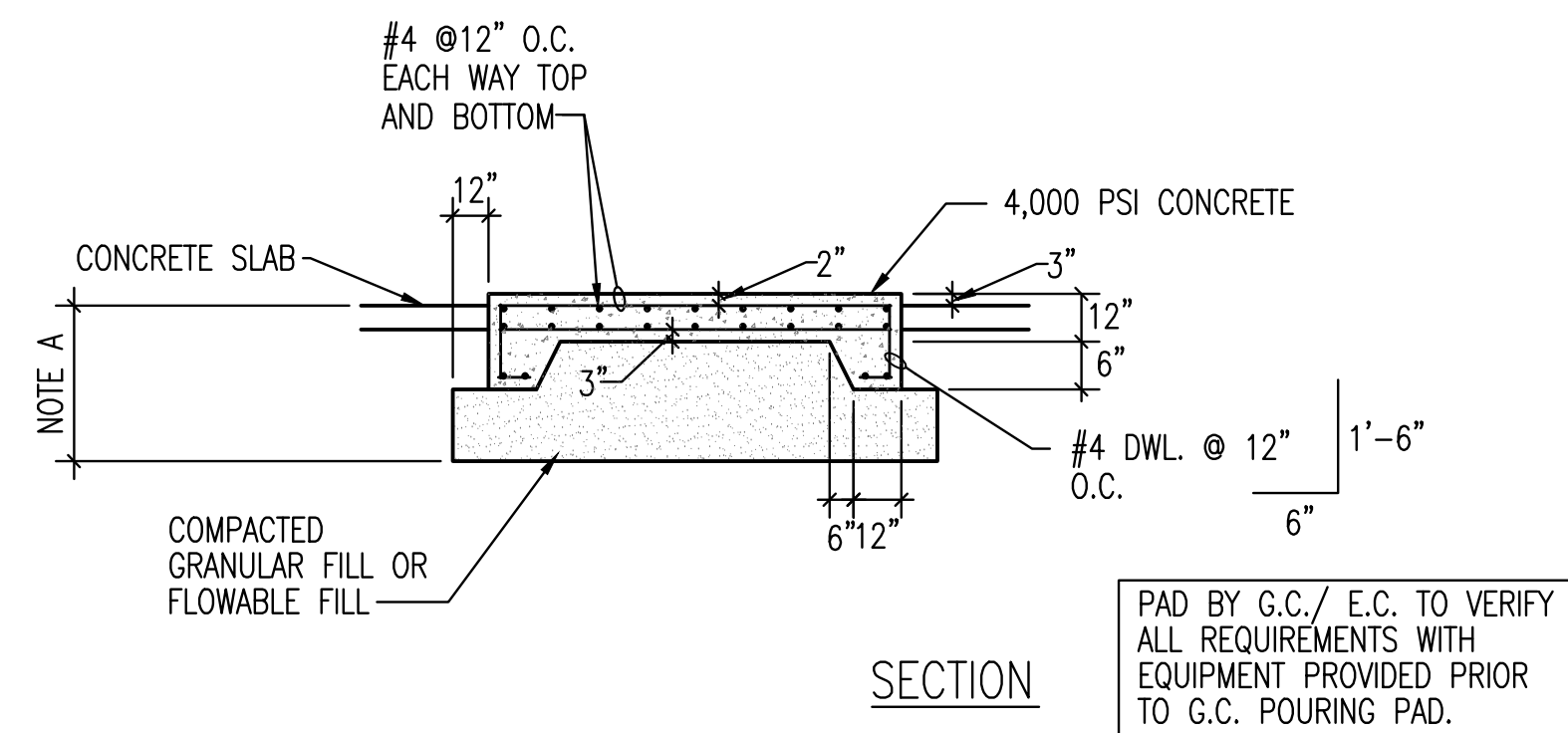
BRANCH CIRCUIT/DISTRIBUTION PANEL

1 TYPICAL NAME PLATES
NO SCALE

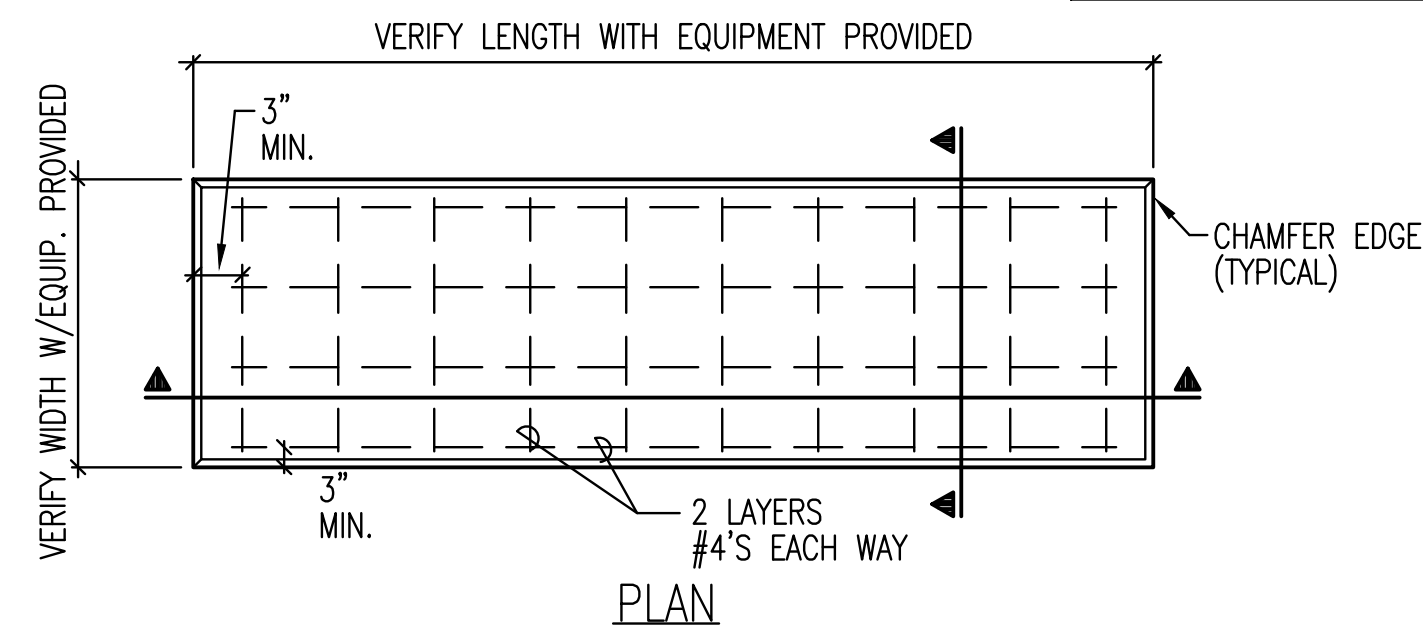


2 ENLARGED GENERATOR DETAIL
NO SCALE

NOTE: ALL CONDUIT SHALL BE 1" MINIMUM UNLESS OTHERWISE NOTED.



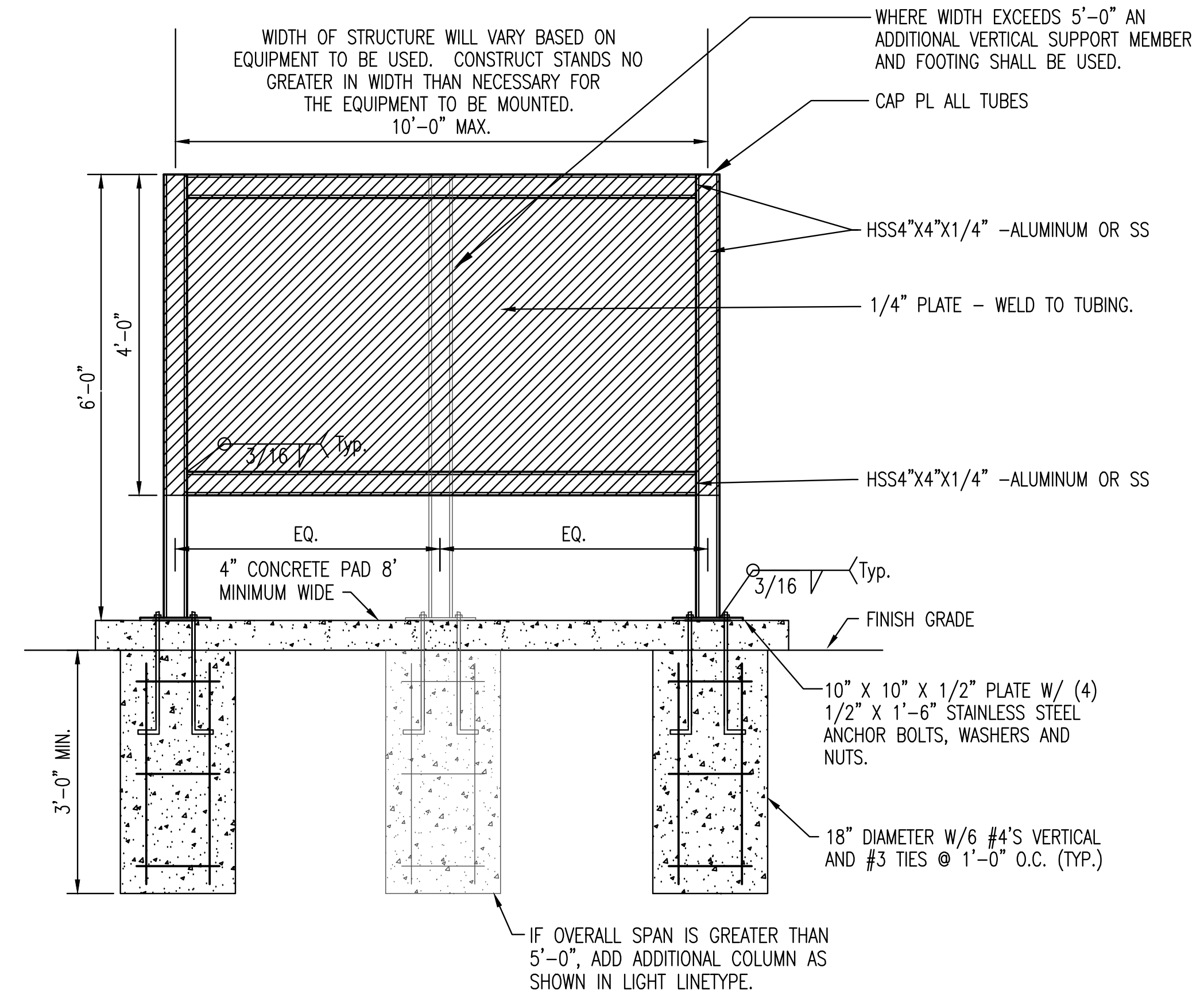
SECTION



PLAN

3 ENGINE GENERATOR PAD DETAIL
NO SCALE

NOTE A: OVER EXCAVATE TO A MINIMUM DEPTH OF 24" BELOW GRADE OR 6" BELOW FROST, WHICHEVER IS GREATER.



4 TYPICAL ELECTRICAL STRUCTURE DETAIL
NO SCALE

CONTRACTOR OPTION TO FABRICATE ENTIRE STRUCTURE OF STAINLESS STEEL OR ALUMINUM. IF STAND IS CONSTRUCTED OF STAINLESS STEEL THE SAME TUBING, PLATE SIZES, AND WELDS SHALL BE USED.

CONNECT ALL EQUIPMENT TO STRUCTURE USING STAINLESS STEEL BOLT AND/OR SCREWS.

IF ALUMINUM IS USED A 10" X 10" X 1/16" RUBBER PAD SHALL BE INSTALLED BETWEEN THE HOUSEKEEPING PAD AND THE PLATES AT THE BOTTOM OF EACH STAND VERTICAL MEMBER WHERE THEY ATTACH TO THE ANCHOR BOLTS

SAVED: 3/9/2022 1:51:17 PM BY BEN CHAPLIN
 PLOTTED: 3/9/2022 1:55:02 PM BY BEN CHAPLIN
 U:\WICHITA-CIVIL\2021\217043\08\ELECTRICAL\DRAWINGS\E501 ELECTRICAL DETAILS.DWG