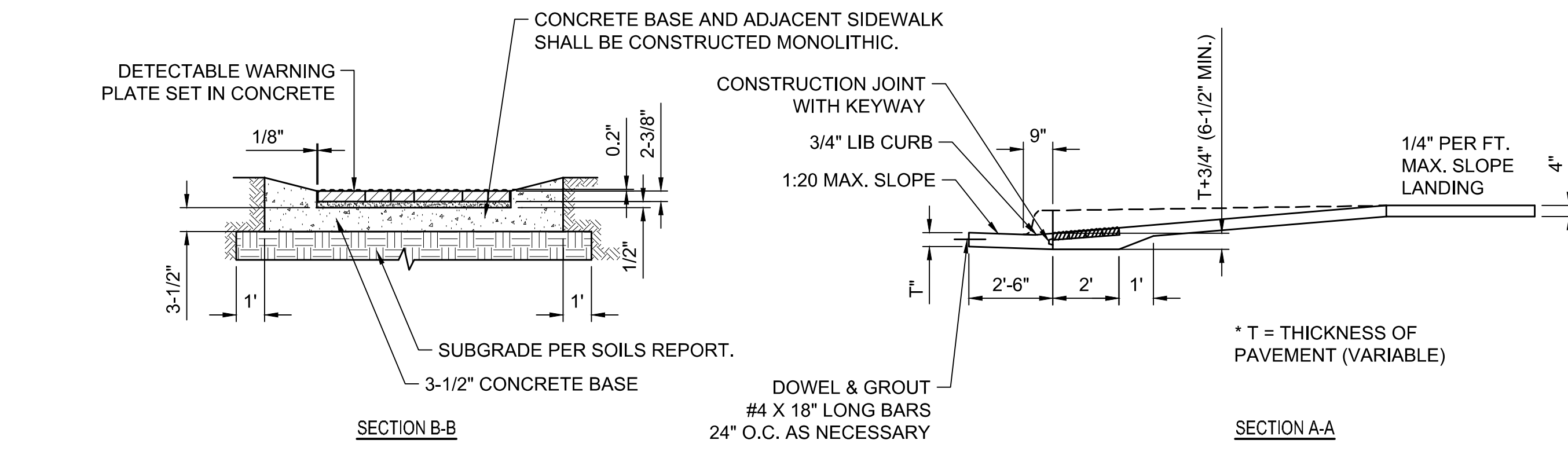
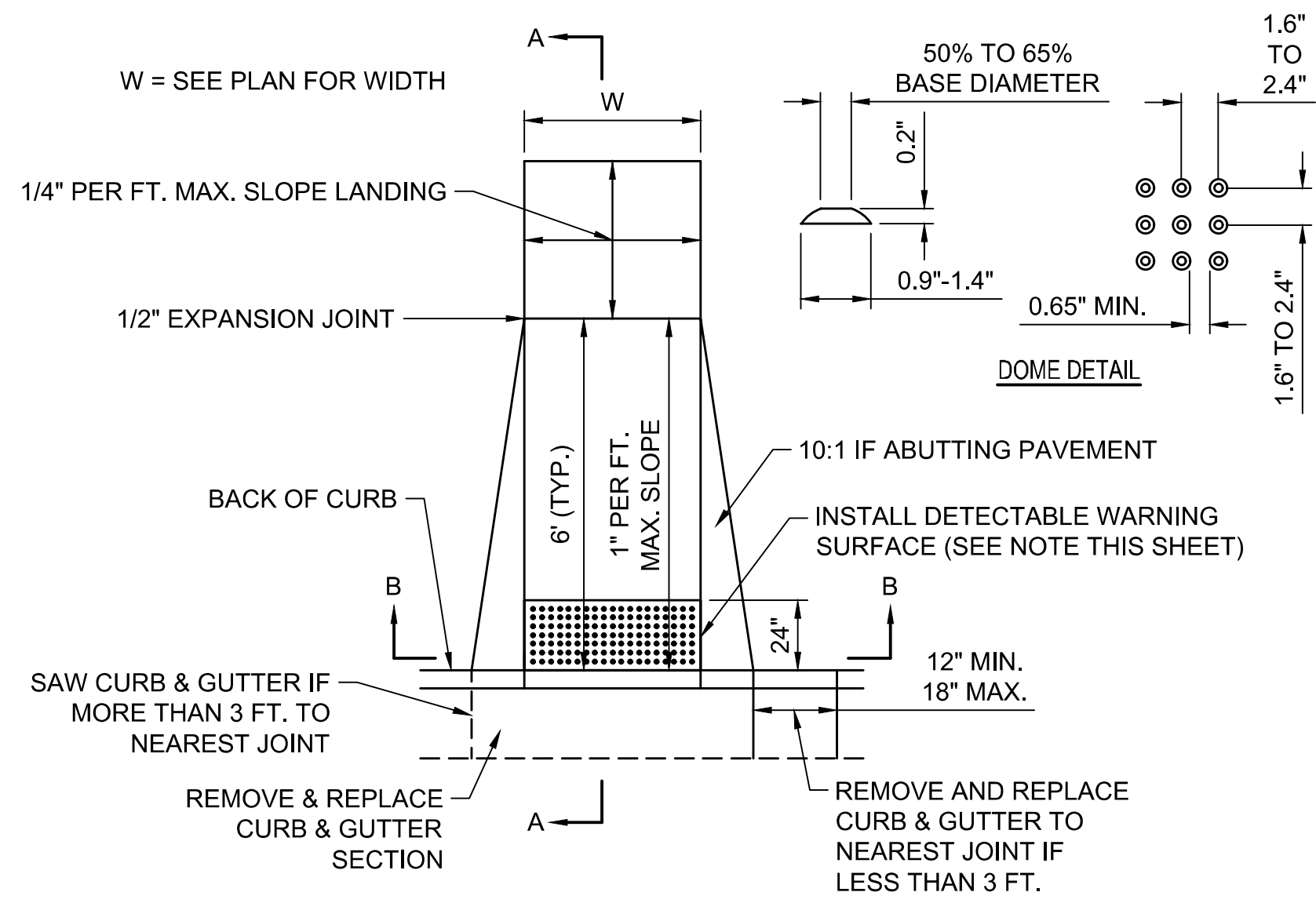


SAVED 12/14/2021 11:45:39 AM BY CHANCE SWANEY  
 PLOTTED 2/25/2022 1:38:45 PM BY KURTIS DEKAT  
 U:\WICHITA-CIVIL\2021\217043\008\MUNIDRAWINGS\217043-008-CU502-PAVING & JOINTING DETAILS.DWG

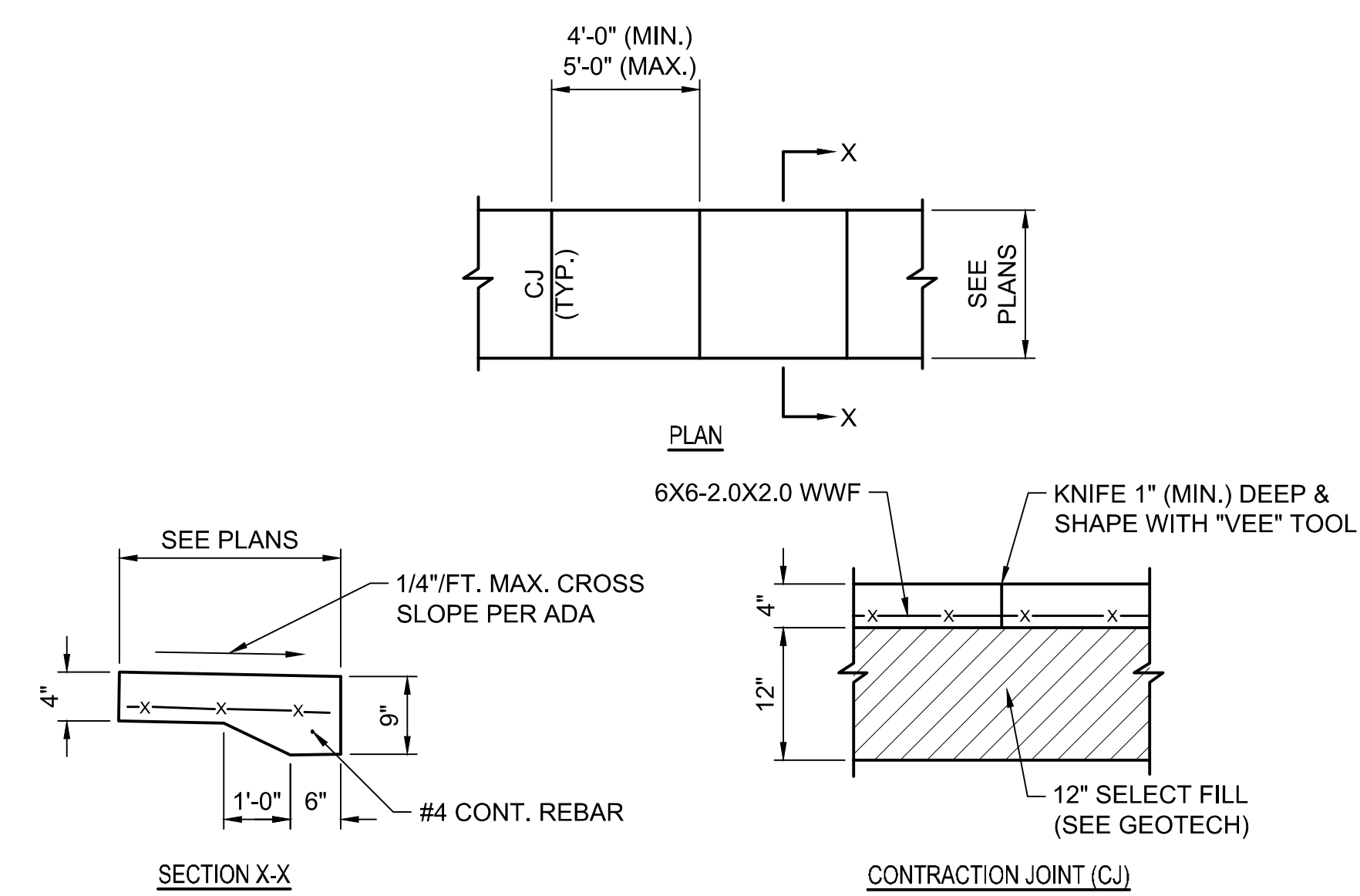


NOTE: RAMPS TO COMPLY WITH LATEST ADA GUIDELINES.



**STANDARD ACCESSIBLE RAMP**  
NOT TO SCALE

**DETECTABLE WARNING PLATE**  
 CAST IRON DETECTABLE WARNING PLATE (UNPAINTED) BY NEENAH OR APPROVED EQUAL.  
 MODEL 4984-24Q (24"x24")  
 MODEL 4984-30Q (24"x30")  
 MODEL 4984-36Q (24"x36")  
 CONTRACTOR TO ORDER PLATES AS NECESSARY FOR TOTAL WIDTH OF DETECTABLE WARNING SURFACE IN THE PLANS. REF. C1.7 & C1.8 FOR DIMENSIONS.

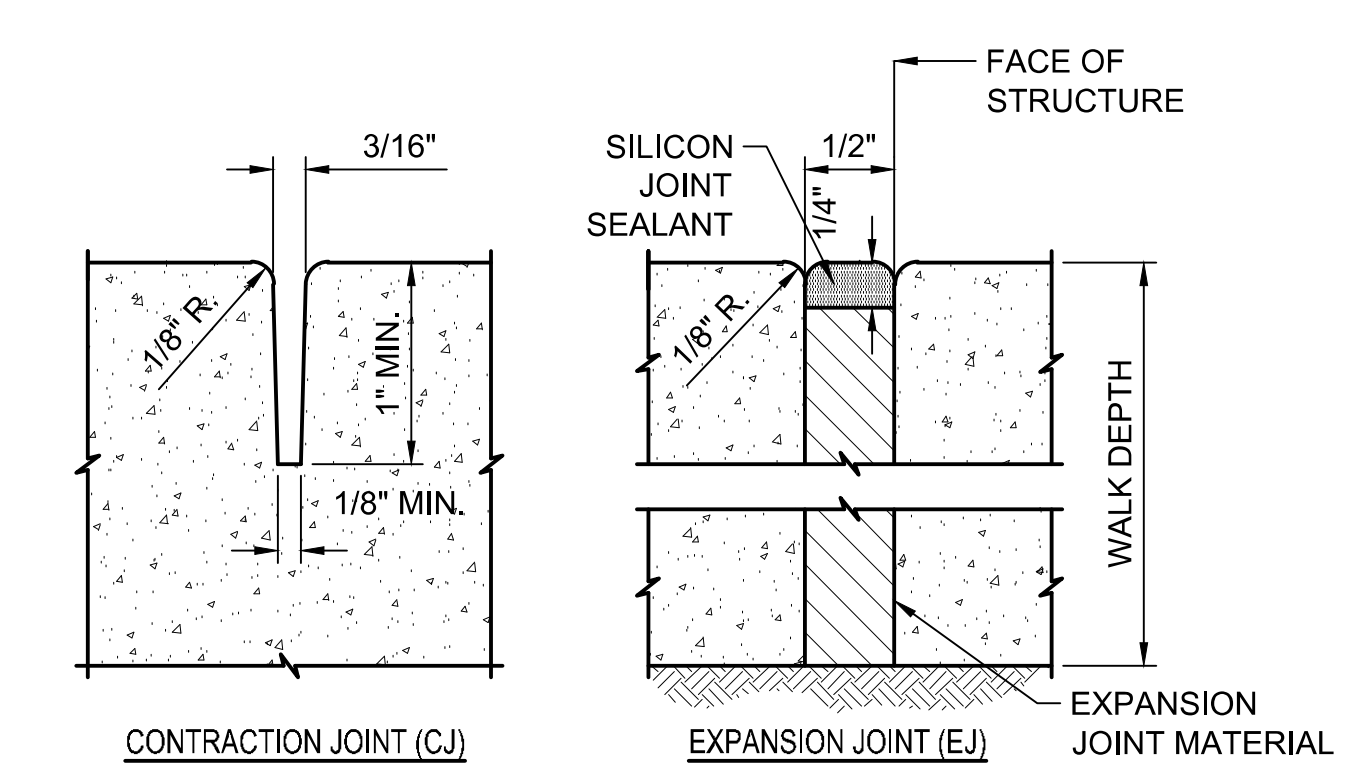


**CONCRETE WALK NOTES**

1. THICKENED EDGE ONLY REQUIRED AT ABUTMENT TO BUILDING, WALL, AND EXISTING PAVEMENT.
2. 4" SLAB THICKNESS UNLESS SPECIFIED OTHERWISE ON THE PLAN SHEET. 4000 PSI 28 DAY COMPRESSIVE STRENGTH (CLASS 1).
3. NO SAWN CONTRACTION JOINTS WILL BE ALLOWED.

**CONCRETE WALK DETAILS**

NOT TO SCALE

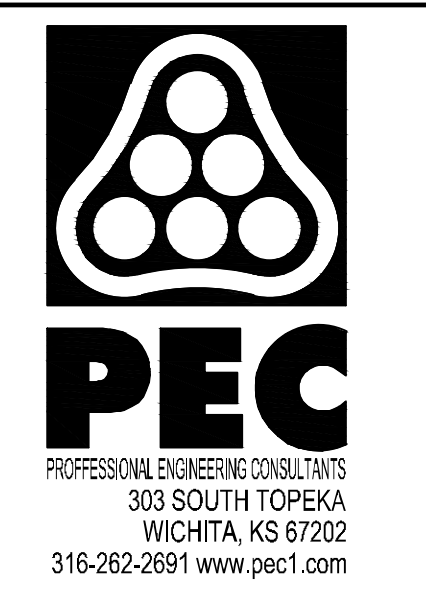


**CONCRETE WALK JOINT NOTES**

1. PROVIDE 1/2" EXPANSION JOINT MATERIAL AT ALL LOCATIONS WHERE NEW CONCRETE ABUTS EXISTING OR NEW STRUCTURES AND AT BACK OF CURB.

**CONCRETE WALK JOINT DETAILS**

NOT TO SCALE



SANITARY SEWER IMPROVEMENTS  
**LIFT STATION NO. 23**  
 AT  
**W. 37TH STREET N AND PORTER AVE.**  
 GARY JANZEN, P.E. - CITY ENGINEER  
 CITY OF WICHITA PROJECT NO. 468-2020-019218 S0015

Issue:	
JOB NO.	35-217043-008-0042
DATE	NOVEMBER 2021
PM	RWG
DESIGNED BY	RWG
DRAWN BY	KTD
CHECKED BY	TBK

PAVING & JOINTING DETAILS

**CU502**