

**CONSTRUCTION NOTES**

New signal heads and signing shall be installed as close to traffic-direction conversion as practicable. All new signal heads and signing on traffic signal equipment shall be covered until traffic conversion occurs. The removal of any signing on traffic signal equipment shall occur at the time of the traffic conversion.

Contractor shall install new Traffic Signal Controller and R3-1 Sign (mast arm) on Traffic Signal Pole #1.

Contractor shall install Traffic Signal Pole #2, two (2) Traffic Signal Head 4A (mast arm), R3-5L sign (mast arm), R3-5R sign (mast arm), R5-1 sign (pole) and Street Name Sign "J" (mast arm).

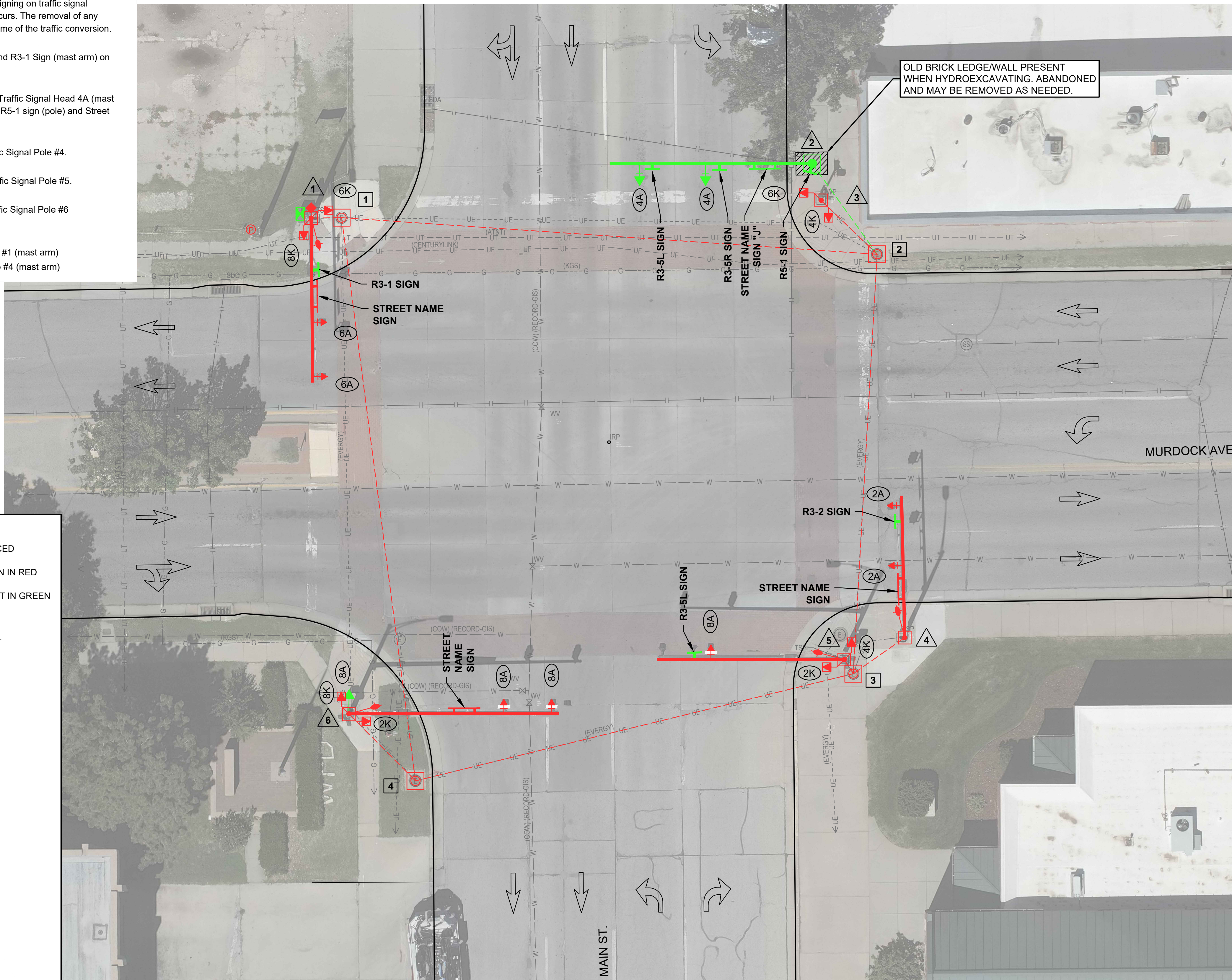
Contractor shall install R3-2 Sign (mast arm) on Traffic Signal Pole #4.

Contractor shall install R3-5L Sign (mast arm) on Traffic Signal Pole #5.

Contractor shall install Traffic Signal Head 8A on Traffic Signal Pole #6

Contractor shall remove the following signs:

- "One Way" (R6-1L) sign from Traffic Signal Pole #1 (mast arm)
- "One Way" (R6-1R) sign from Traffic Signal Pole #4 (mast arm)



OLD BRICK LEDGE/WALL PRESENT WHEN HYDROEXCAVATING. ABANDONED AND MAY BE REMOVED AS NEEDED.

**LEGEND**

- PAVEMENT REMOVED & REPLACED
- TRAFFIC EQUIPMENT TO REMAIN IN RED
- PROPOSED TRAFFIC EQUIPMENT IN GREEN
- POWER/METER LOCATION
- TRAFFIC CONTROLLER CABINET
- SERVICE BOX
- CONDUIT
- TRAFFIC SIGNAL POLE
- SIGNAL HEAD W/BACKPLATE
- SIGNAL HEAD
- PEDESTRIAN SIGNAL HEAD
- PEDESTRIAN PUSHBUTTON
- TRAFFIC SIGN
- LUMINAIRE WITH ARM
- COMM. ANTENNA MOUNT
- VIDEO DETECTION CAMERA
- RADAR DETECTION UNIT
- LANE USE
- SERVICE BOX NUMBER
- SIGNAL POLE NUMBER
- SIGNAL HEAD PHASE/TYPE
- DETECTOR NUMBER

**DOWNTOWN  
TWO-WAY STREET  
CONVERSION  
CENTRAL BUSINESS DISTRICT  
WICHITA, KANSAS**

Issue:	1		

JOB NO.	230431-000
DATE	JULY 2024
PM	TPA
DESIGNED BY	LGP/SAC
DRAWN BY	CP/SAC
CHECKED BY	SAC/TPA

MAIN ST. & MURDOCK AVE.  
TRAFFIC SIGNAL PLAN SHEET

SAVED 6/11/2024 8:37:14 AM BY SCOTT.CANFIELD  
 PLOTTED 7/12/2024 1:46:19 PM BY SCOTT.CANFIELD  
 U:\WICHITA-CIVIL\2023\230431\000\PECDRAWINGS\230431-000-CP107 MAIN MURDOCK.DWG

