



**DOWNTOWN
TWO-WAY STREET
CONVERSION
CENTRAL BUSINESS DISTRICT
WICHITA, KANSAS**

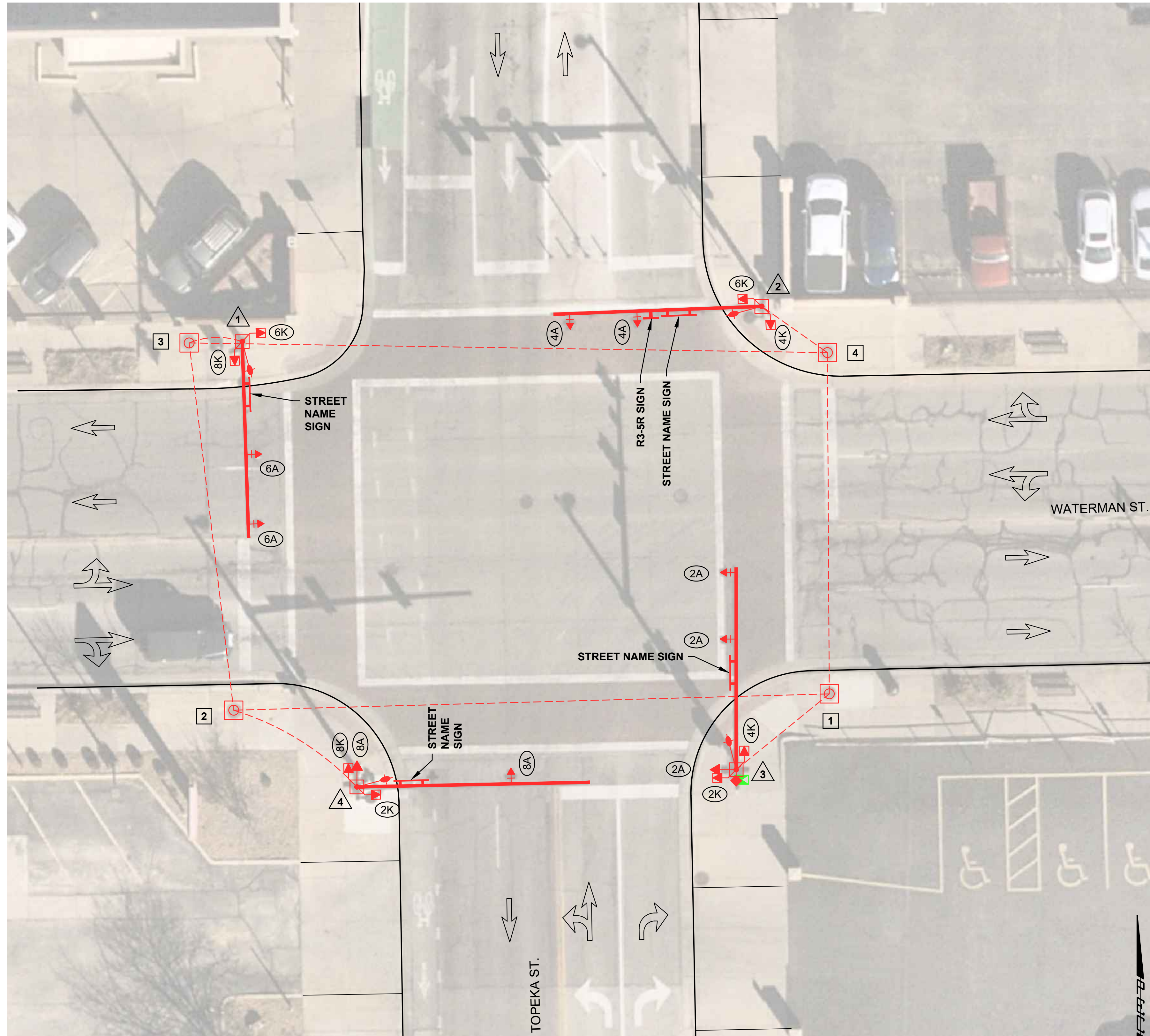
CONSTRUCTION NOTES

New signal heads and signing shall be installed as close to traffic-direction conversion as practicable. All new signal heads and signing on traffic signal equipment shall be covered until traffic conversion occurs. The removal of any signing on traffic signal equipment shall occur at the time of the traffic conversion.

Contractor shall install new Traffic Signal Controller on Traffic Signal Pole #3.

Contractor shall remove the following signs:

- "No Right Turn" (R3-1) sign from Traffic Signal Pole #1 (mast arm)
- "One Way" (R6-1L) sign from Traffic Signal Pole #1 (pole)
- "One Way" (R6-1R) sign from Traffic Signal Pole #1 (pole)
- "Left Turn Only" (R3-5L) sign from Traffic Signal Pole #2 (mast arm)
- "One Way" (R6-1L) sign from Traffic Signal Pole #2 (pole)
- "One Way" (R6-1R) sign from Traffic Signal Pole #2 (pole)
- "No Left Turn" (R3-2) sign from Traffic Signal Pole #2 (pole)
- "No Left Turn" (R3-2) sign from Traffic Signal Pole #3 (mast arm)
- "Left Only" (R3-5L) sign from Traffic Signal Pole #3 (pole)



LEGEND

- PAVEMENT REMOVED & REPLACED
- TRAFFIC EQUIPMENT TO REMAIN IN RED
- PROPOSED TRAFFIC EQUIPMENT IN GREEN
- POWER/METER LOCATION
- TRAFFIC CONTROLLER CABINET
- SERVICE BOX
- CONDUIT
- TRAFFIC SIGNAL POLE
- SIGNAL HEAD W/BACKPLATE
- SIGNAL HEAD
- PEDESTRIAN SIGNAL HEAD
- PEDESTRIAN PUSHBUTTON
- TRAFFIC SIGN
- LUMINAIRE WITH ARM
- COMM. ANTENNA MOUNT
- VIDEO DETECTION CAMERA
- RADAR DETECTION UNIT
- LANE USE
- SERVICE BOX NUMBER
- SIGNAL POLE NUMBER
- SIGNAL HEAD PHASE/TYPE
- DETECTOR NUMBER

Issue:	1		

JOB NO.	230431-000
DATE	JULY 2024
PM	TPA
DESIGNED BY	LGP/SAC
DRAWN BY	CP/SAC
CHECKED BY	SAC/TPA

TOPEKA AVE. & WATERMAN ST.
TRAFFIC SIGNAL PLAN SHEET

SAVED 6/11/2024 8:56:54 AM BY SCOTT.CANFIELD
PLOTTED 7/12/2024 1:51:00 PM BY SCOTT.CANFIELD
U:\WICHITA-CIVIL\2023\230431\000\PEC\DRAWINGS\230431-000-CP121 TOPEKA WATERMAN.DWG