

CONSTRUCTION NOTES

New signal heads and signing shall be installed as close to traffic-direction conversion as practicable. All new signal heads and signing on traffic signal equipment shall be covered until traffic conversion occurs. The removal of any signing on traffic signal equipment shall occur at the time of the traffic conversion.

Contractor shall install new Traffic Signal Controller on Traffic Signal Pole #5.

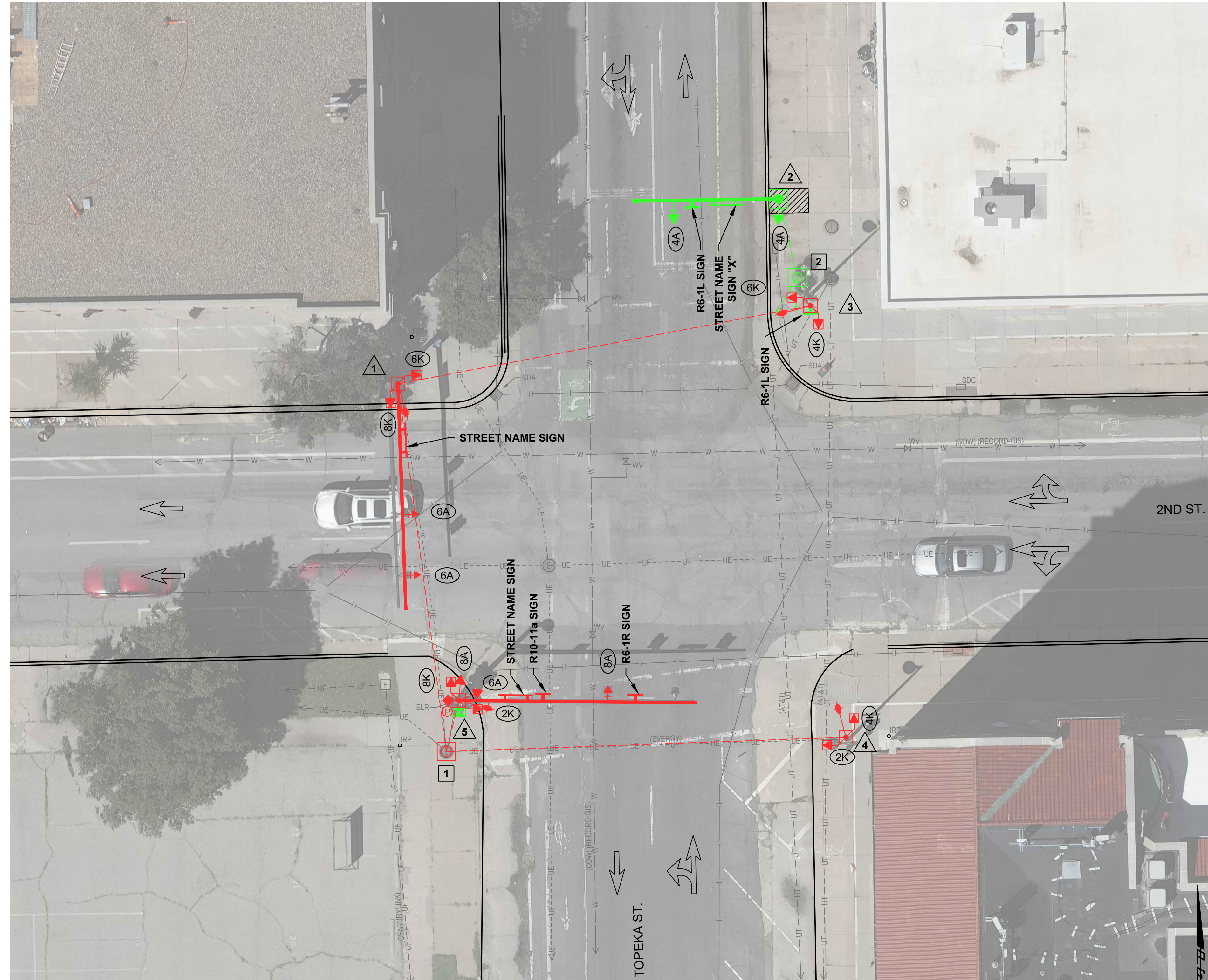
Contractor shall install Traffic Signal Pole #2, Traffic Signal Head 4A (mast arm), Traffic Signal Head 4A (pole), R6-1L sign (mast arm) and Street Name Sign "X" (mast arm).

Contractor shall install R6-1L sign (pole) on Traffic Signal Pole #3.

Contractor shall install Service Box #2 and route existing conduits to service box as shown.

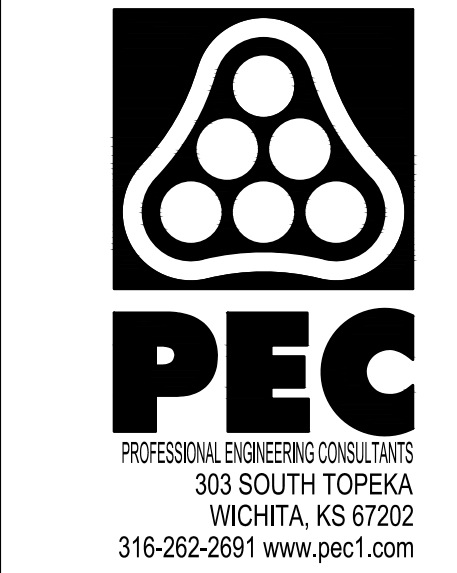
Contractor shall remove the following signs:

- "One Way" (R6-1L) sign from Traffic Signal Pole #1 (pole)
- "One Way" (R6-1L) sign from Traffic Signal Pole #1 (mast arm)
- "One Way" (R6-1L) sign from Traffic Signal Pole #5 (pole)



LEGEND

- PAVEMENT REMOVED & REPLACED
- TRAFFIC EQUIPMENT TO REMAIN IN RED
- PROPOSED TRAFFIC EQUIPMENT IN GREEN
- POWER/METER LOCATION
- TRAFFIC CONTROLLER CABINET
- SERVICE BOX
- CONDUIT
- TRAFFIC SIGNAL POLE
- SIGNAL HEAD W/BACKPLATE
- SIGNAL HEAD
- PEDESTRIAN SIGNAL HEAD
- PEDESTRIAN PUSHBUTTON
- TRAFFIC SIGN
- LUMINAIRE WITH ARM
- COMM. ANTENNA MOUNT
- VIDEO DETECTION CAMERA
- RADAR DETECTION UNIT
- LANE USE
- SERVICE BOX NUMBER
- SIGNAL POLE NUMBER
- SIGNAL HEAD PHASE/TYPE
- DETECTOR NUMBER



**DOWNTOWN
TWO-WAY STREET
CONVERSION
CENTRAL BUSINESS DISTRICT
WICHITA, KANSAS**

Issue:		
1		
JOB NO.	230431-000	
DATE	JULY 2024	
PM	TPA	
DESIGNED BY	LGP/SAC	
DRAWN BY	CP/SAC	
CHECKED BY	SAC/TPA	

TOPEKA AVE. &
2ND ST.
TRAFFIC SIGNAL PLAN SHEET