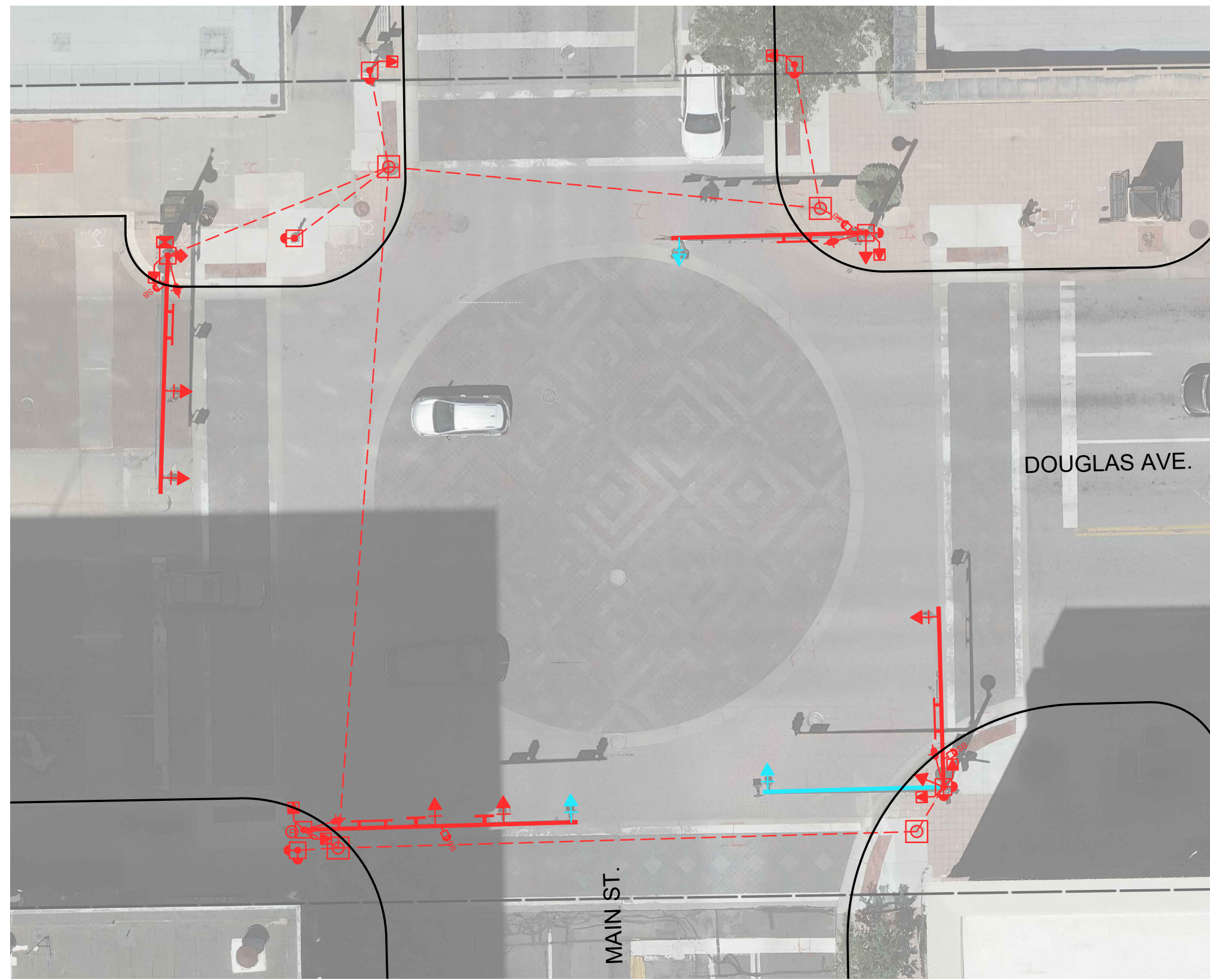
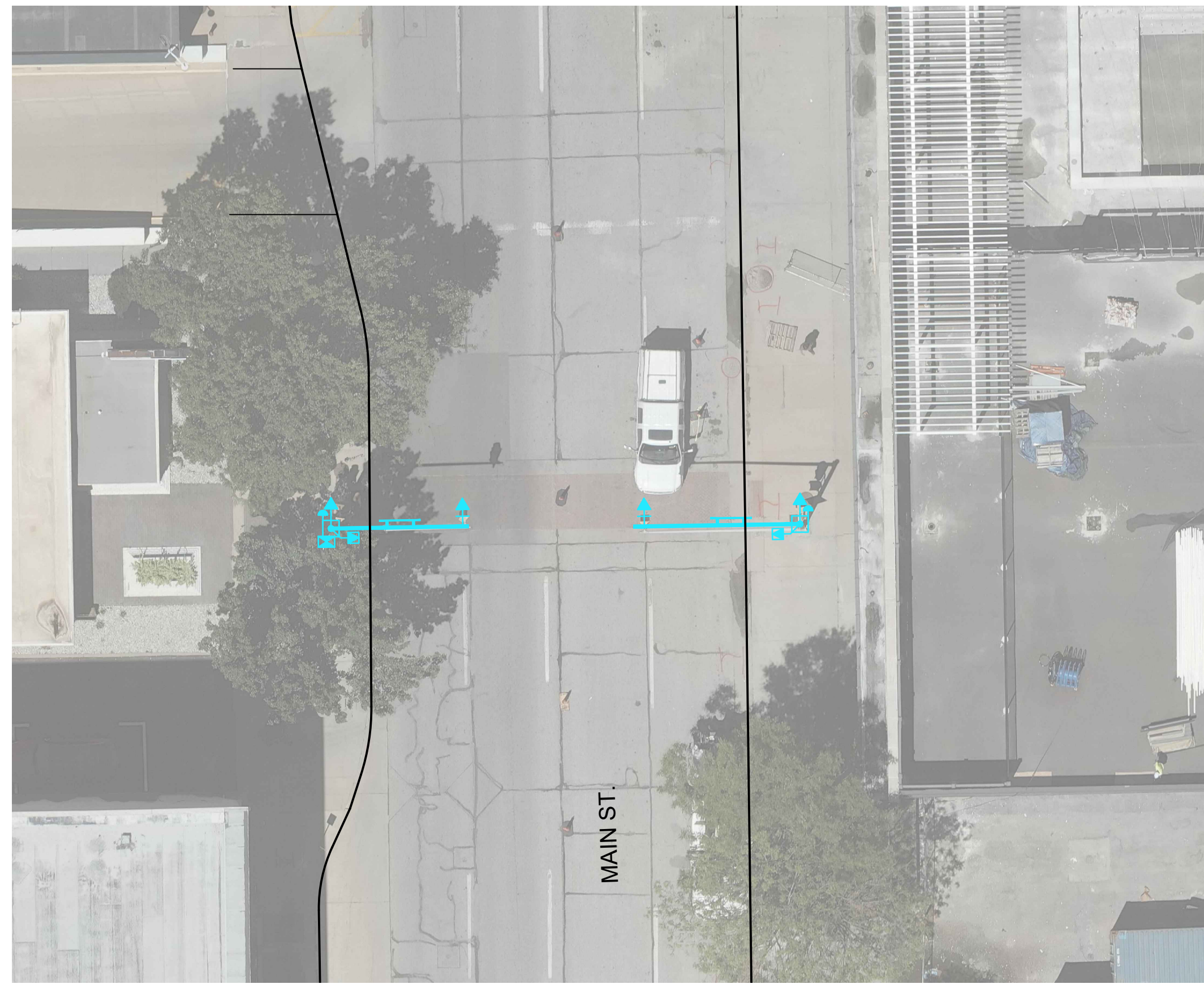


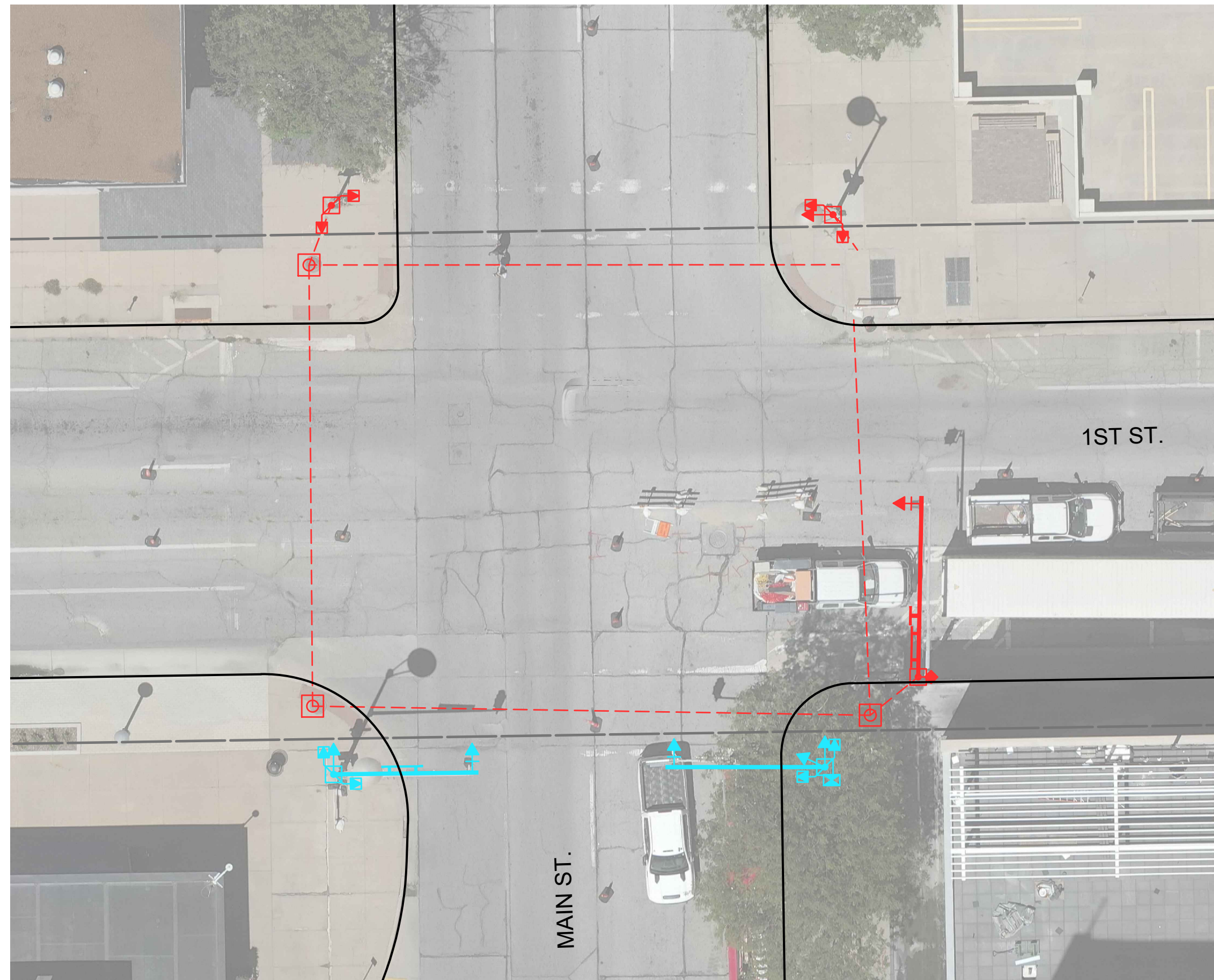
SAVED 6/24/2024 8:48:09 AM BY SCOTT.CANFIELD
 PLOTTED 7/12/2024 1:43:03 PM BY SCOTT.CANFIELD
 U:\WICHITA-CIVIL\2023\230431\000\PECDRAWINGS\230431-000-CD100 DEMO.DWG



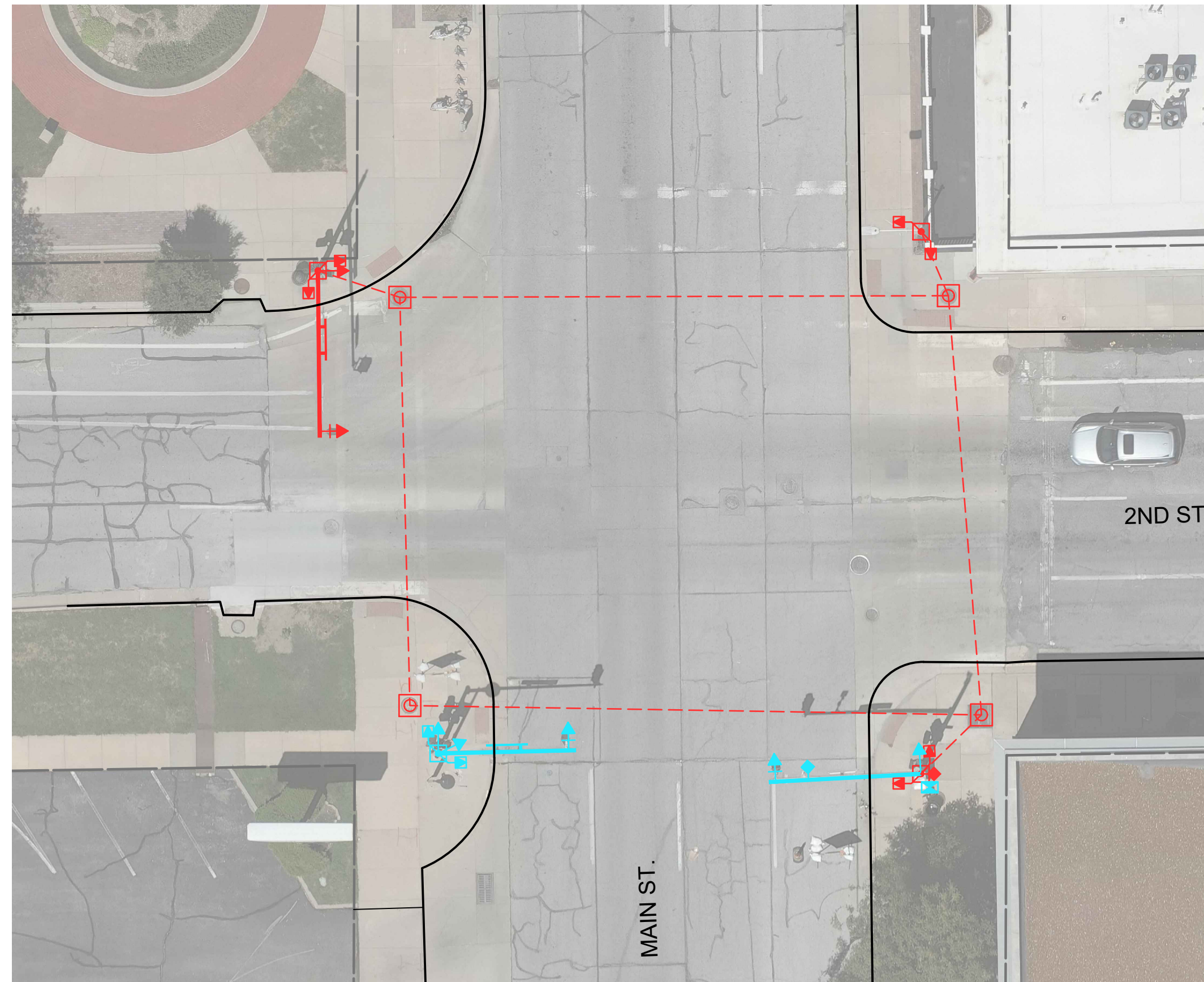
MAIN ST. & DOUGLAS AVE.



MAIN ST. CROSSWALK (BETWEEN DOUGLAS AVE. & 1ST ST.)



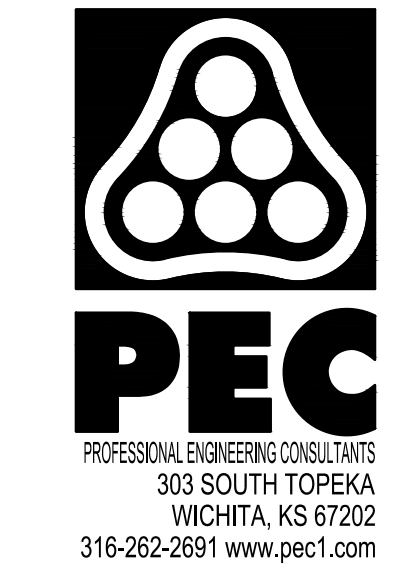
MAIN ST. & 1ST ST.



MAIN ST. & 2ND ST.

REMOVAL OF EXISTING STRUCTURES		
	TYPE A SIGNAL (SIDE-OF-POLE)	8
	TYPE A SIGNAL (MAST ARM)	8
	MAST ARM & POLE BASE (GALVANIZED)	5
	MAST ARM & POLE BASE (BLACK)	
	POLE BASE (PEDESTAL)	
	MAST ARM ONLY	2
	POWER METER (COORDINATE REMOVAL & REPLACE W/ EVERGY)	
	SIDE-OF-POLE CONTROLLER CABINET	3
	SIDE-OF-POLE PEDESTRIAN SIGNAL (NO COUNTDOWN)	2
	SIDE-OF-POLE PEDESTRIAN SIGNAL (COUNTDOWN)	6
	PEDESTRIAN PUSHBUTTON (OLD STANDARD)	2
	PEDESTRIAN PUSHBUTTON (CURRENT STANDARD)	
	ANTENNA MOUNT	1
	5-HEAD DOG HOUSE SIGNAL	1

LEGEND	
	TO REMAIN IN RED
	TO BE REMOVED IN BLUE



**DOWNTOWN
 TWO-WAY STREET
 CONVERSION
 CENTRAL BUSINESS DISTRICT
 WICHITA, KANSAS**

Issue:	
1	
JOB NO.	230431-000
DATE	JULY 2024
PM	TPA
DESIGNED BY	LGP/SAC
DRAWN BY	CP/SAC
CHECKED BY	SAC/TPA

DEMOLITION PLANS
 - MAIN ST.

