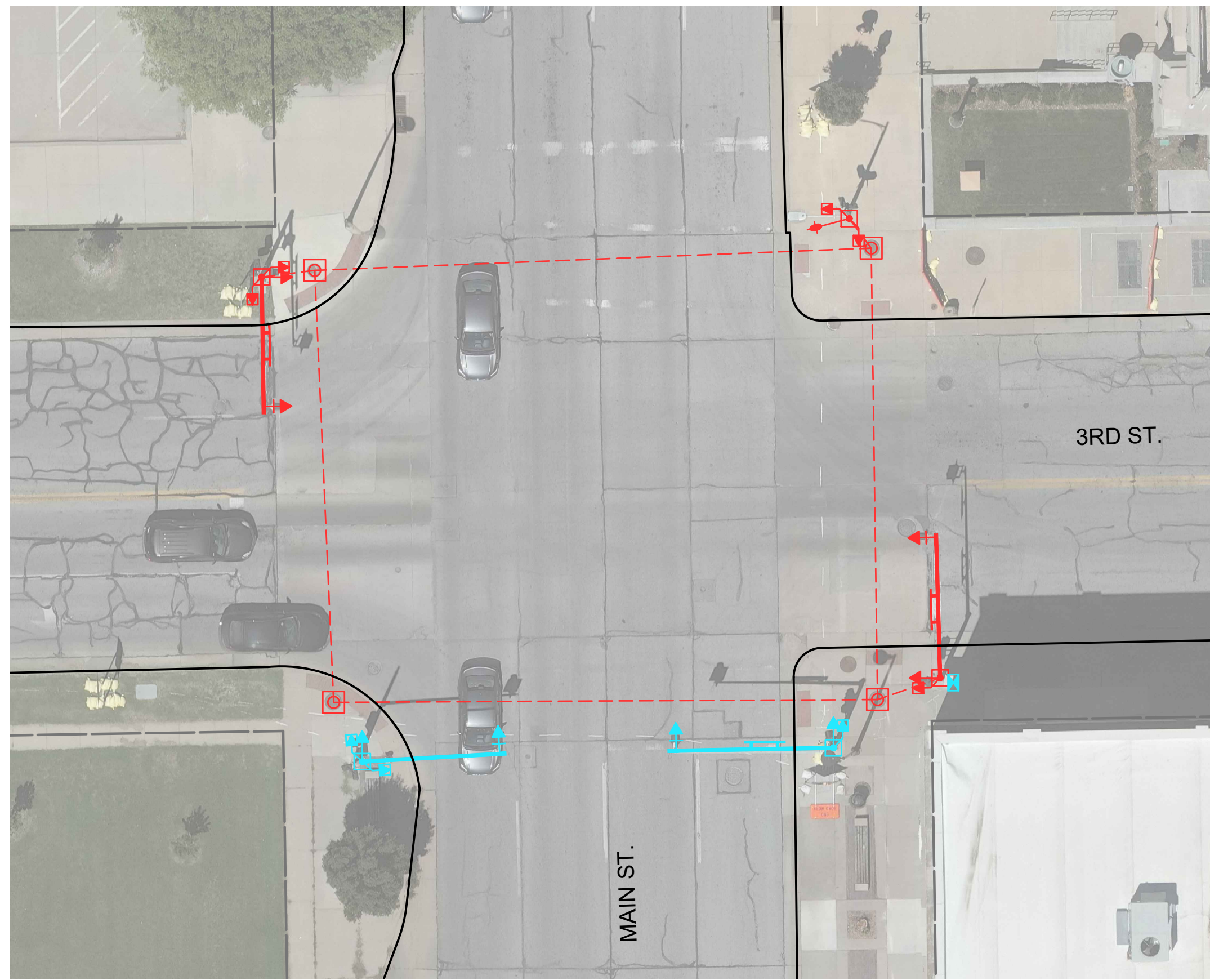
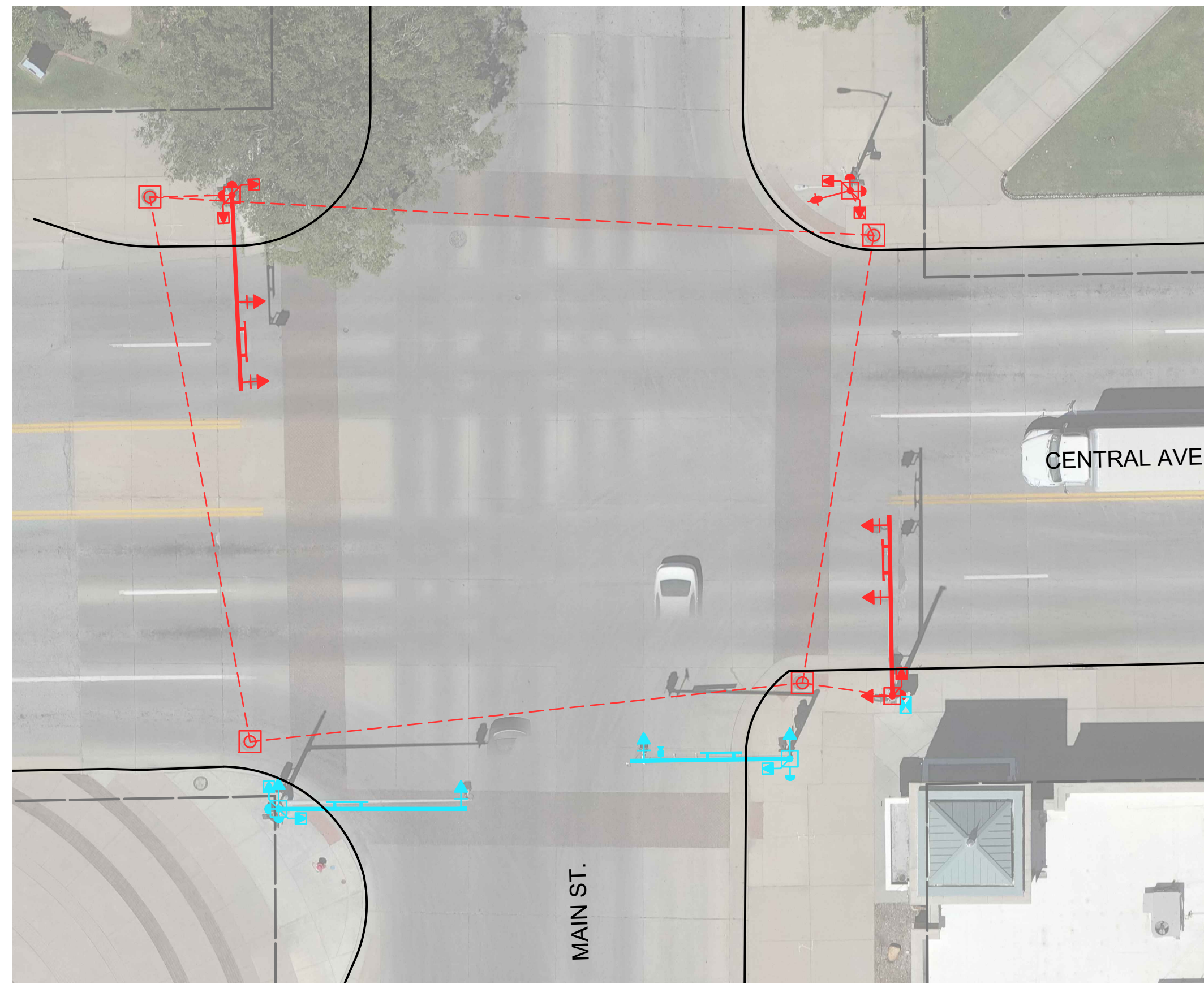


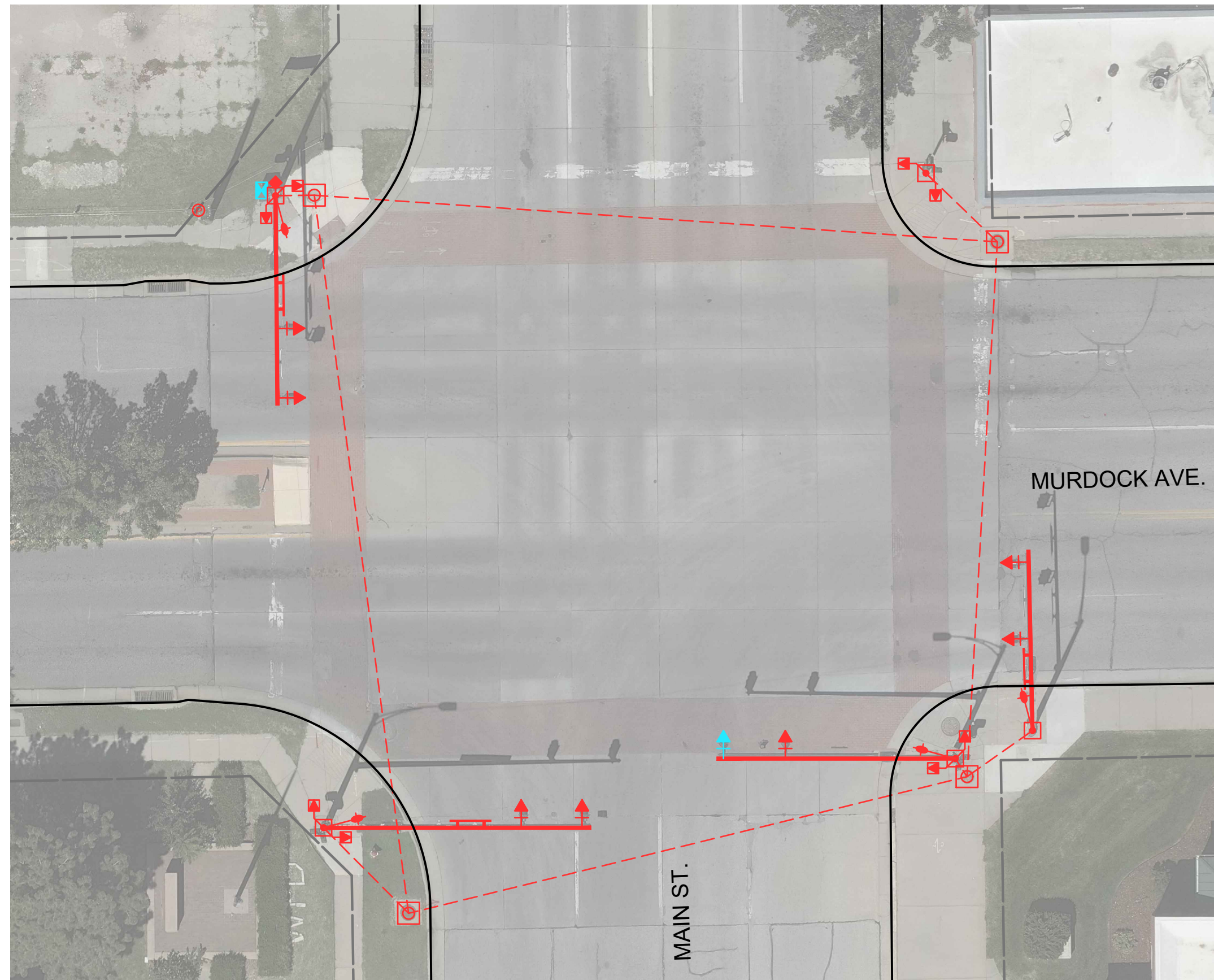
SAVED 6/24/2024 8:48:09 AM BY SCOTT.CANFIELD
 PLOTTED 7/12/2024 1:43:11 PM BY SCOTT.CANFIELD
 U:\WICHITA-CIVIL\2023\230431-000\PECDRAWINGS\230431-000-CD100 DEMO.DWG



MAIN ST. & 3RD ST.



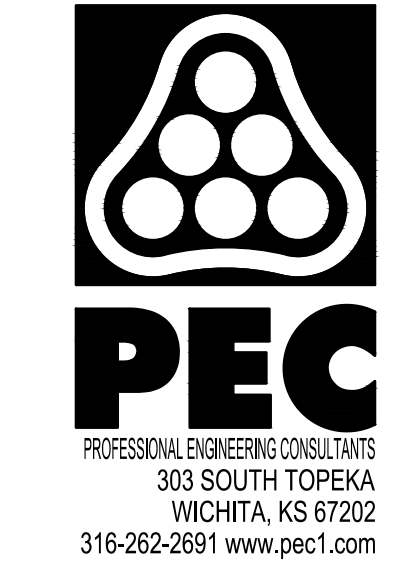
MAIN ST. & CENTRAL AVE.



MAIN ST. & MURDOCK AVE.

REMOVAL OF EXISTING STRUCTURES		
	TYPE A SIGNAL (SIDE-OF-POLE)	4
	TYPE A SIGNAL (MAST ARM)	5
	MAST ARM & POLE BASE (GALVANIZED)	4
	MAST ARM & POLE BASE (BLACK)	
	POLE BASE (PEDESTAL)	
	MAST ARM ONLY	
	POWER METER (COORDINATE REMOVAL & REPLACE W/ EVERGY)	
	SIDE-OF-POLE CONTROLLER CABINET	3
	SIDE-OF-POLE PEDESTRIAN SIGNAL (NO COUNTDOWN)	
	SIDE-OF-POLE PEDESTRIAN SIGNAL (COUNTDOWN)	6
	PEDESTRIAN PUSHBUTTON (OLD STANDARD)	
	PEDESTRIAN PUSHBUTTON (CURRENT STANDARD)	3
	VEHICLE DETECTION (VIDEO)	1

LEGEND	
	TO REMAIN IN RED
	TO BE REMOVED IN BLUE



**DOWNTOWN
 TWO-WAY STREET
 CONVERSION
 CENTRAL BUSINESS DISTRICT
 WICHITA, KANSAS**

Issue:			
1			
JOB NO.	230431-000		
DATE	JULY 2024		
PM	TPA		
DESIGNED BY	LGP/SAC		
DRAWN BY	CP/SAC		
CHECKED BY	SAC/TPA		

DEMOLITION PLANS -
 MAIN ST. (CONT.)

