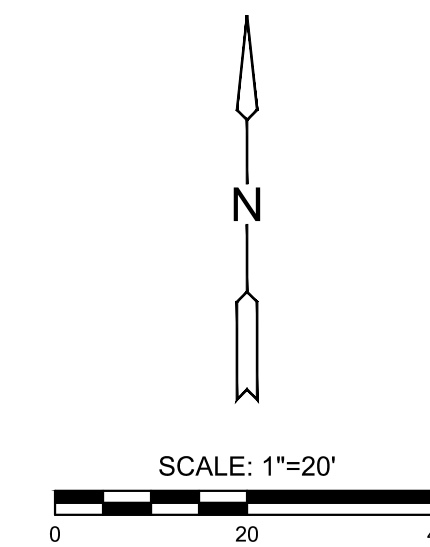
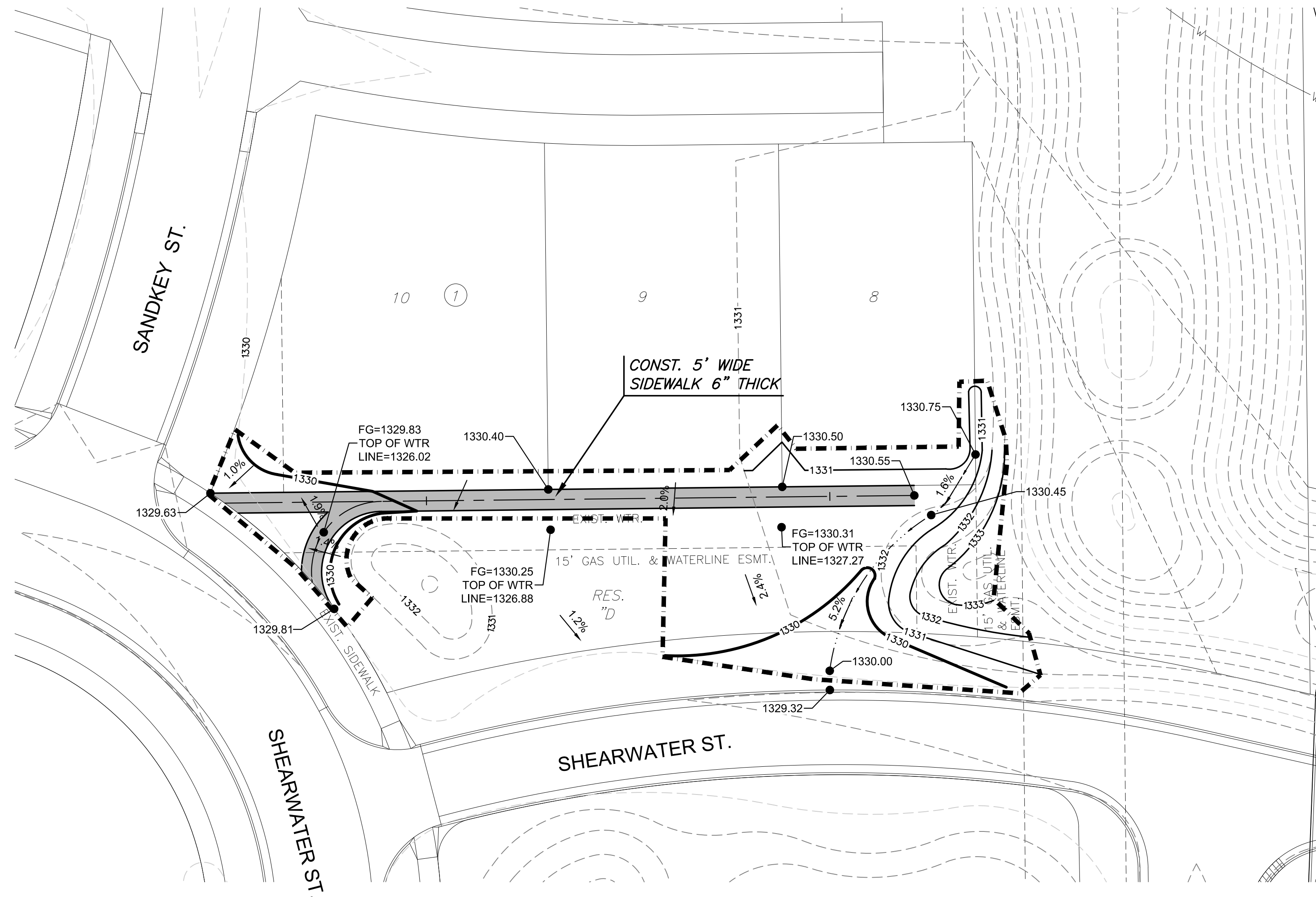


PLOTTED: Tuesday, July 30, 2024 @ 11:50AM

J:\PROJECTS\2024\12\10\10427_PERFECTION_COURTYARDS AT MOORINGS\02\10427 CAD\SH1\05 CIVIL\PAVPH1\2427-05-500-PH1_REV.DWG



- NOTES:**
- CONTRACTOR SHALL INSTALL SIDEWALK FORMS MIN. 1 WEEK PRIOR TO CASTING CONCRETE SIDEWALK.
 - CONTRACTOR SHALL ACQUIRE MKEC'S LANDSCAPE ARCHITECT WRITTEN APPROVAL OF FORMWORK PRIOR TO SIDEWALK INSTALLATION.
 - CONTRACTOR SHALL GIVE MKEC'S REPRESENTATIVE 2 DAYS NOTICE PRIOR TO INSTALLATION OF SIDEWALK FORMS.

PAVING & INCIDENTAL DRAINAGE PLANS FOR
COURTYARDS AT THE MOORINGS
 PART C

©2024
 MKEC Engineering
 All Rights Reserved
 www.mkec.com
 These drawings and their contents, including, but not limited to, all concepts, designs, & ideas are the exclusive property of MKEC Engineering (MKEC), and may not be used or reproduced in any way without the express consent of MKEC.

GRADING PLAN 3

PROJECT NO.	472-2022-085820c
DATE	JULY 2024
SCALE	1" = 20'
DESIGNED	DML
DRAWN	DML
CHECKED	SPE

0	ISSUED FOR CONSTRUCTION	07/30/24
NO.	REVISION	DATE