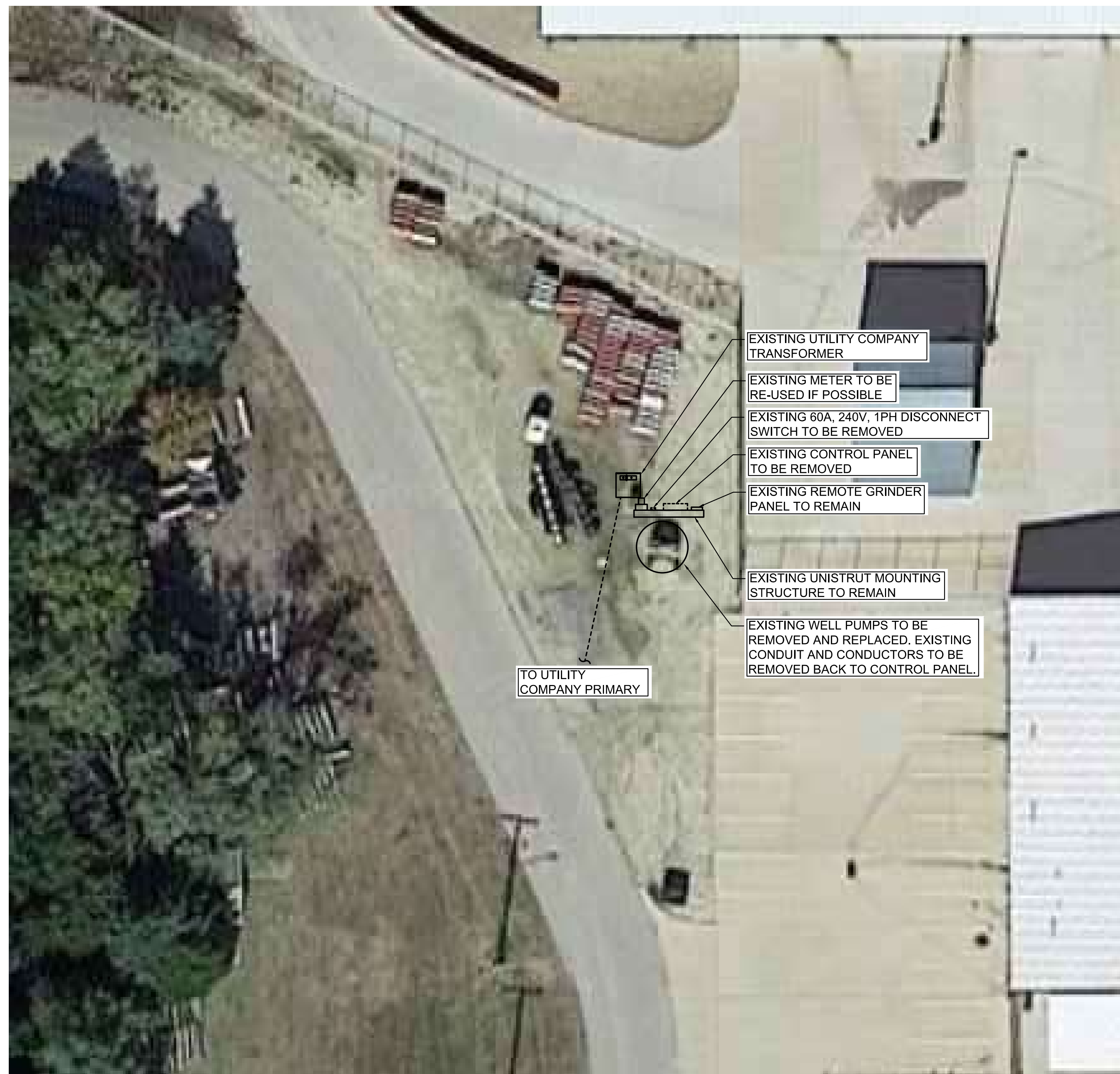
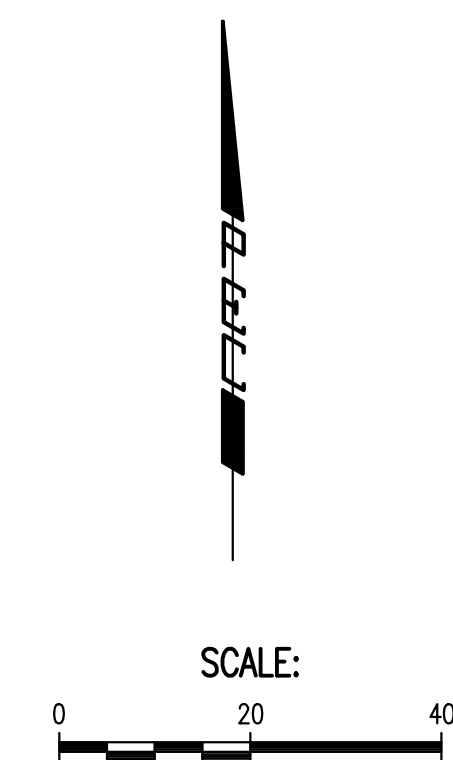


SAVED 12/14/2023 3:51:31 PM BY SEAN.GERETY
 PLOTTED 12/14/2023 5:20:39 PM BY SEAN.GERETY
 U:\WICHITA-CIVIL\2023\1210602\002\DRAWINGS\ELEC\E-102 ELECTRICAL DEMOLITION PLAN.DWG



DEMOLITION NOTES:

1. DEMOLITION PLANS SHOW THE GENERAL EXTENT OF THE ELECTRICAL DEMOLITION WORK. THE ELECTRICAL CONTRACTOR SHALL DISCONNECT ELECTRICAL SERVICES TO ALL EQUIPMENT BEING REMOVED. OWNER SHALL HAVE THE OPTION TO RETAIN REUSABLE ITEMS, SUCH AS COVERPLATES, RECEPTACLES, LIGHTS, PANELS, ETC. NOT BEING USED IN THE FINISHED WORK. COORDINATE WITH OWNER PRIOR TO STARTING DEMOLITION. PROPERLY AND LEGALLY DISPOSE OF ALL EQUIPMENT AND MATERIALS BEING REMOVED.
2. WHERE EQUIPMENT AND OTHER DEVICES ARE BEING REMOVED, THE CIRCUITING SHALL BE REMOVED, IF POSSIBLE, BACK TO POINT OF SUPPLY. WHERE REQUIRED, CIRCUITING SHALL BE EXTENDED TO MAINTAIN CONTINUITY OF THE CIRCUIT OR OPERATION OF THE SYSTEM.
3. ALL DEVICES SHOWN DASHED ON THE DEMOLITION PLAN(S) SHALL BE REMOVED, UNLESS NOTED OTHERWISE.
4. FIELD VERIFY ALL EXISTING CONDITIONS AND DIMENSIONS PRIOR TO BEGINNING WORK.



A ELECTRICAL DEMOLITION PLAN
 SCALE: 1" = 20'-0"



**SANITARY SEWER IMPROVEMENTS
 COWSKIN FORCE MAIN
 AND LIFT STATION 60
 IMPROVEMENTS**
 PAUL GUNZELMAN, P.E. - INTERIM CITY ENGINEER
 CITY OF WICHITA PROJECT NO. 468-2022-040654

Issue:									

JOB NO.	35-210602-001-042
DATE	DECEMBER 2023
PM	TBK
DESIGNED BY	SPG
DRAWN BY	JAB
CHECKED BY	RWW

ELECTRICAL DEMOLITION
 PLAN

E-101