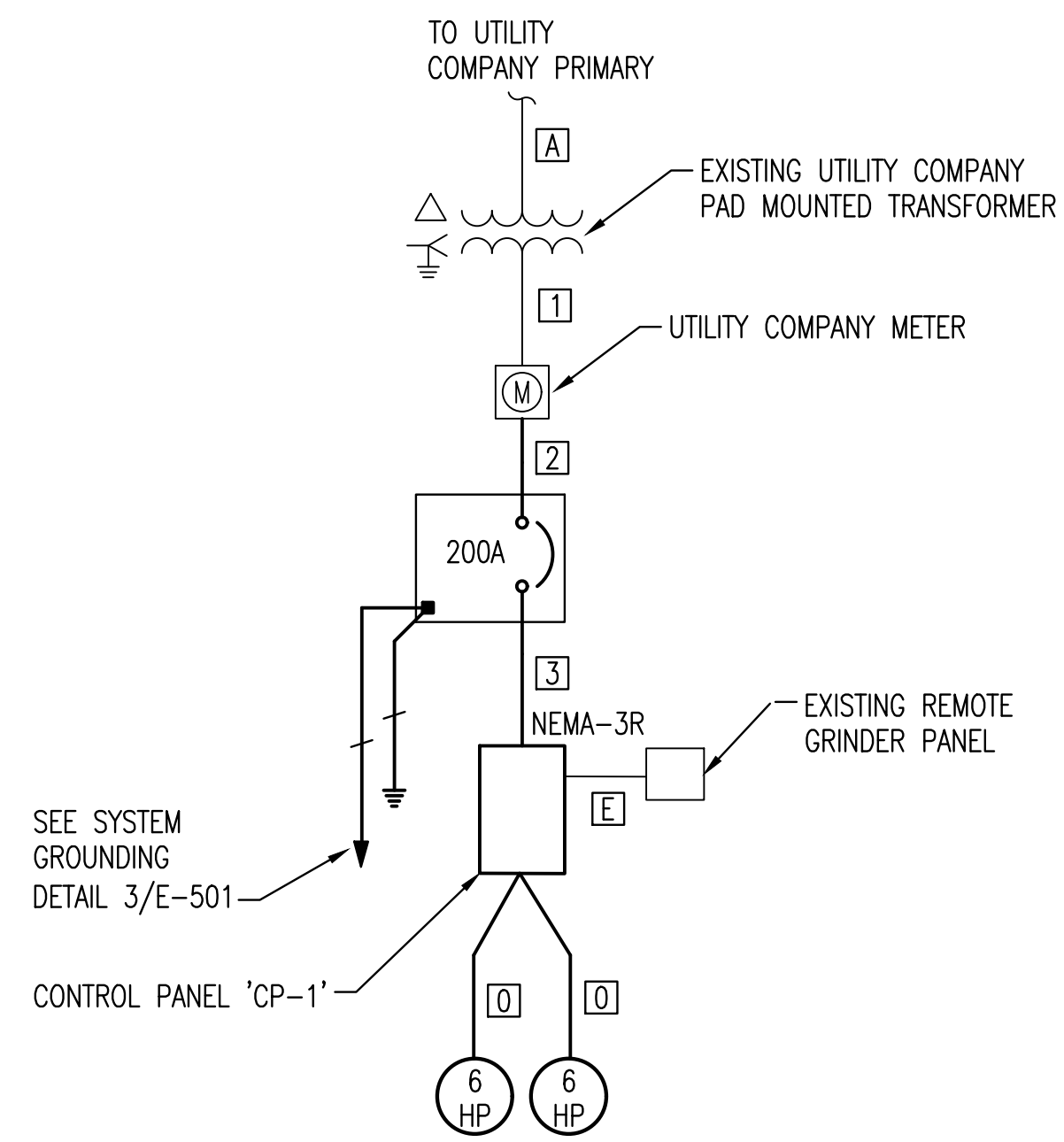


# 1 DEMOLITION ONE-LINE DIAGRAM

NO SCALE



# 2 PROPOSED ONE-LINE DIAGRAM

NO SCALE

## FEEDER SCHEDULE

DESIG.	EQUIPMENT SERVED	CONDUCTORS			GROUND SIZE PER SET	ISOLATED GROUND SIZE	CONDUIT SIZE PER SET	SPARE CONDUIT
		SETS	NO.	SIZE				
② A	UTILITY COMPANY PRIMARY	1	---	W/PULLROPE	---	---	---	---
① 1	UTILITY COMPANY METER	1	4	#3/0 AWG CU	---	---	---	---
2	MAIN CIRCUIT BREAKER	1	4	#3/0 AWG CU	---	---	2" C.	---
3	CONTROL PANEL 'CP-1'	1	4	#3/0 AWG CU	---	---	2" C.	---
E	EXISTING TO REMAIN							
D	EXISTING TO BE REMOVED							
0	SEE MECHANICAL CONNECTION SCHEDULE							

① RE-USE EXISTING UNDERGROUND CONDUIT FOR ROUTING OF CONDUCTORS IF POSSIBLE. IF NOT POSSIBLE, CONTRACTOR TO PROVIDE 2" CONDUIT.  
 ② CONTRACTOR TO FIELD VERIFY EXISTING UNDERGROUND CONDUIT SIZE. COORDINATE REQUIREMENTS WITH EVERY FOR NEW SERVICE SIZE CONDUCTORS.

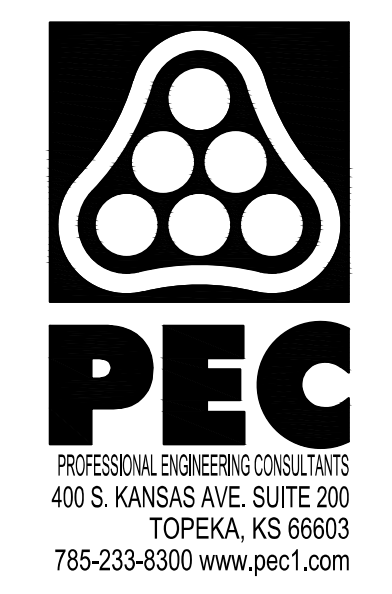
### GENERAL ONE-LINE DIAGRAM NOTES:

- UNLESS OTHERWISE NOTED, ALL CIRCUIT BREAKERS AND/OR SWITCHES ARE THREE POLE.
- ALL ELECTRICAL EQUIPMENT AND WIRING SHOWN IN A LIGHT LINE, IS EXISTING TO REMAIN.
- ALL ELECTRICAL EQUIPMENT AND WIRING SHOWN IN A DARK LINE, IS NEW WORK UNDER THIS CONTRACT.
- ALL ELECTRICAL EQUIPMENT AND WIRING SHOWN IN A DARK DASHED LINE, IS TO BE REMOVED UNDER THIS CONTRACT.

## EQUIPMENT CONNECTION SCHEDULE

MECHANICAL EQUIPMENT CONNECTIONS																
UNIT DESIG.	UNIT VOLTAGE	LOAD			PANEL DEVICE				DEVICE AT UNIT				S E T S	FEEDER DESCRIPTION OR SEE THE FEEDER SCHEDULE	REMARKS OR SEE THE INDICATED NOTES BELOW	
		H.P.	FLA	KVA	CIRCUIT NUMBER	BKR. SW. FUSE	NEMA START. SIZE	BKR. SW. FUSE	NEMA START. SIZE	OTHER						
P	PUMP															
④ 1	240/3	6	31.1	12.90	VFD	110		3				VFD		1	3	#1 AWG THWN; #6 AWG GRD; 1-1/2" C.
④ 2	240/3	6	31.1	12.90	VFD	110		3				VFD		1	3	#1 AWG THWN; #6 AWG GRD; 1-1/2" C.

- ALL CONNECTIONS AND ELECTRICAL EQUIPMENT LISTED IN SCHEDULE SHALL BE PROVIDED AND INSTALLED BY THE ELECTRICAL CONTRACTOR. FIELD VERIFY CONNECTION REQUIREMENTS AND EQUIPMENT PROVIDED BY OTHERS PRIOR TO ROUGH-IN.
- REFER TO MECHANICAL DRAWINGS AND SPECIFICATIONS FOR THE REQUIREMENTS ASSOCIATED WITH WIRING AND CONNECTIONS OF INTERLOCKING, THERMOSTAT LOCATIONS, EXHAUST FAN CONTROL SWITCHES, AND OTHER CONTROLS OF MECHANICAL EQUIPMENT.
- SIZE FUSES FOR MOTOR FUSTATS BASED ON 125% OF MANUFACTURER'S NAMEPLATE FULL LOAD AMPERAGE UNLESS OTHERWISE NOTED ON THE DRAWINGS.
- PUMPS TO BE PROVIDED WITH VFD FOR PHASE CONVERSION. VFD TO TAKE 240V/1PH INCOMING LINE AND CONVERT INTO 240V/3PH POWER FOR PUMP CONNECTIONS. VFD TO BE SIZED 1.73 TIMES LARGER THAN THE 6HP MOTOR LOAD.



SANITARY SEWER IMPROVEMENTS  
 COWSKIN FORCE MAIN  
 AND LIFT STATION 60  
 IMPROVEMENTS

PAUL GUNZELMAN, P.E. - INTERIM CITY ENGINEER  
 CITY OF WICHITA PROJECT NO. 468-2022-040654

Issue:	

JOB NO.	35-210602-001-042
DATE	DECEMBER 2023
PM	TBK
DESIGNED BY	SPG
DRAWN BY	JAB
CHECKED BY	RWW

ELECTRICAL SCHEDULES

SAVED 12/14/2023 4:45:33 PM BY SEAN GERETY  
 PLOTTED 12/14/2023 5:20:59 PM BY SEAN GERETY  
 U:\WICHITA-CIVIL\2023\1210602\002\PECC\DRAWINGS\ELECE-601 ELECTRICAL SCHEDULES.DWG