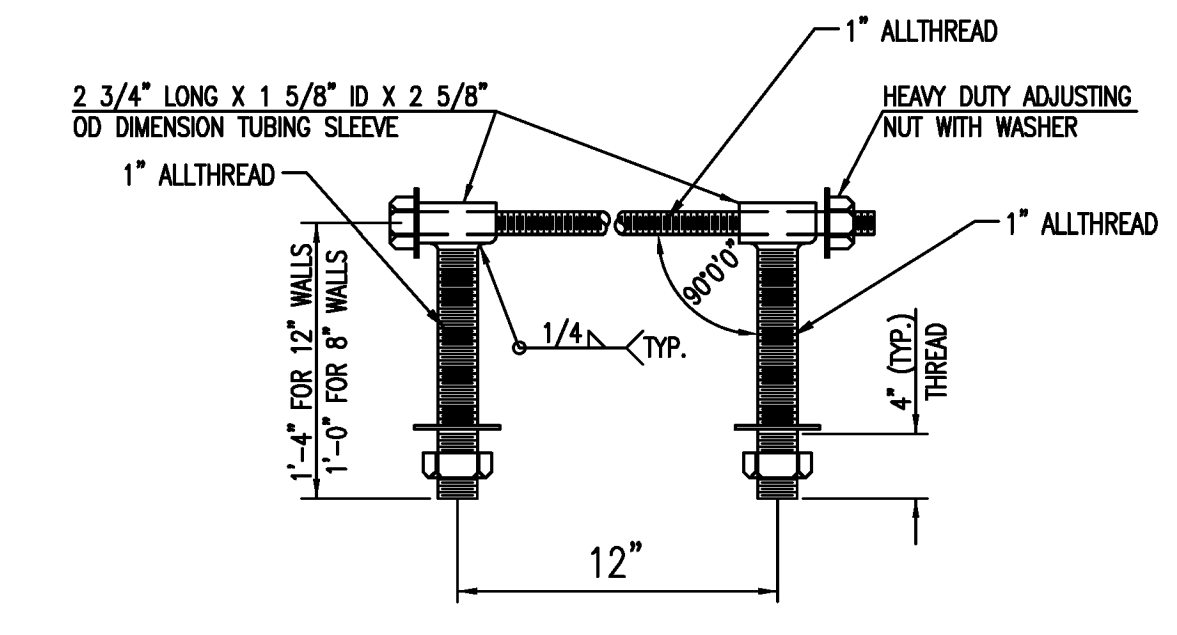
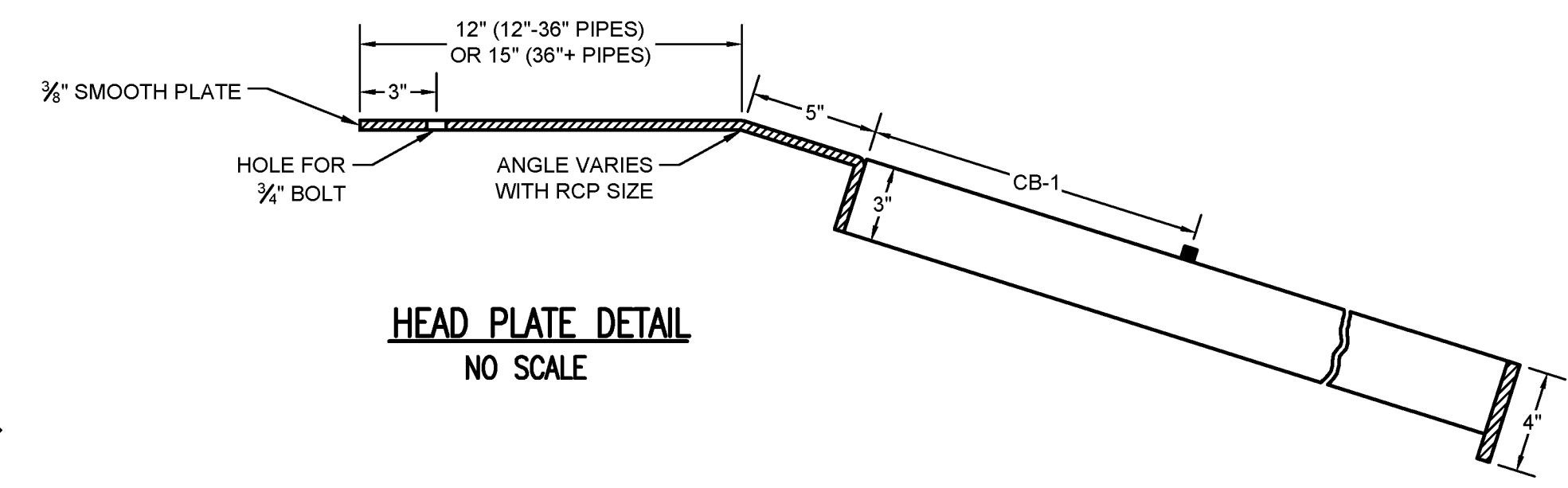


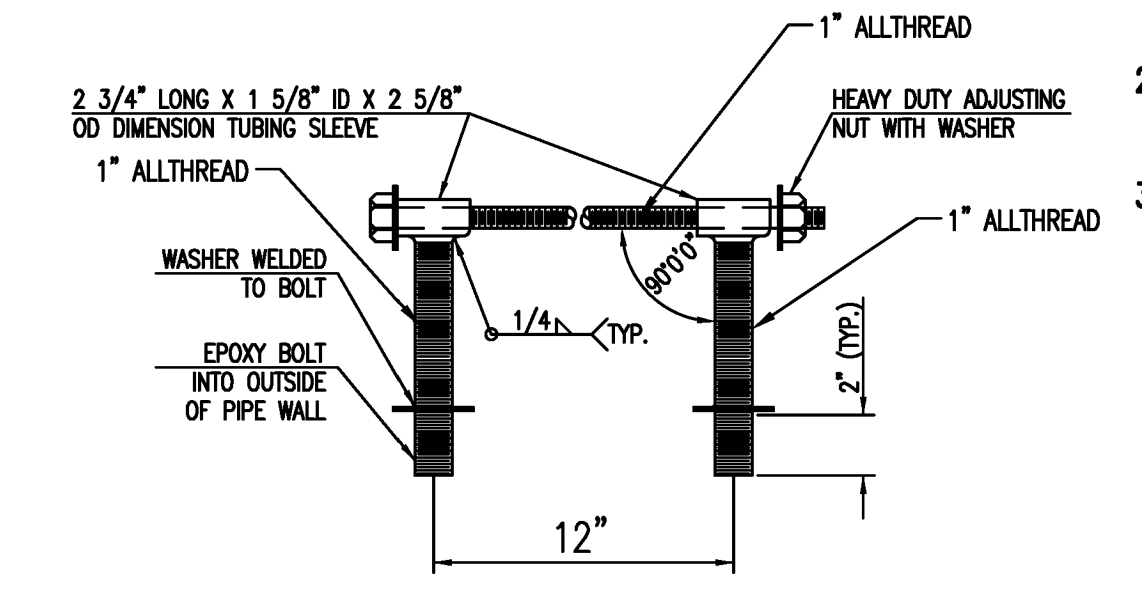
NOTE: GRATE TO BE USED AS DIRECTED BY THE CITY OF WICHITA.

GRATE DIMENSIONS														
PIPE SIZE	PLATE	A	B	C	D	E	F	CB-1	CB-2	CB-3	CB-4	SP-2		
12"	13"	19 1/4"	19 3/8"	-	-	-	27"	10 3/8"	-	-	-	3@4"	3@6"	
15"	13"	23 1/2"	-	-	-	-	34"	10 3/4"	-	-	-	3@4"	3@8"	
18"	13"	25"	26 1/8"	-	-	-	40"	-	-	-	-	3@4"	3@9"	
24"	17"	41 1/2"	42 1/2"	43 1/2"	-	-	58"	12"	15"	-	-	4@4"	4@9"	
30"	19"	51 1/2"	52 1/2"	53 1/2"	-	-	68"	16 1/4"	11 3/4"	12"	-	2@3"+3@4"	5@9"	
36"	21"	60 1/2"	61 1/2"	-	-	-	78"	18 3/8"	14 1/4"	16"	-	2@2"+4@4"	6@9"	
42"	22"	65 1/2"	67 1/2"	67 3/4"	68 3/4"	-	86"	13 3/8"	12 3/8"	-	-	11 3/4"	7@3"	7@9"
48"	25"	70 1/8"	71"	71 3/4"	73"	74 1/2"	90"	16 1/4"	14 3/4"	14 3/4"	-	8@3"	8@9"	
54"	26"	71 3/4"	73"	74 1/2"	74 3/4"	76 3/4"	96"	6 7/8"	20 7/8"	17 7/8"	15 3/8"	4@2 1/2"+8@3"	9@9"	
28"	28"	61 1/8"	61 3/4"	62 3/4"	64 1/2"	66 5/8"	102"	12"	12"	11 1/2"	13"	2@2"+8@3"	-	



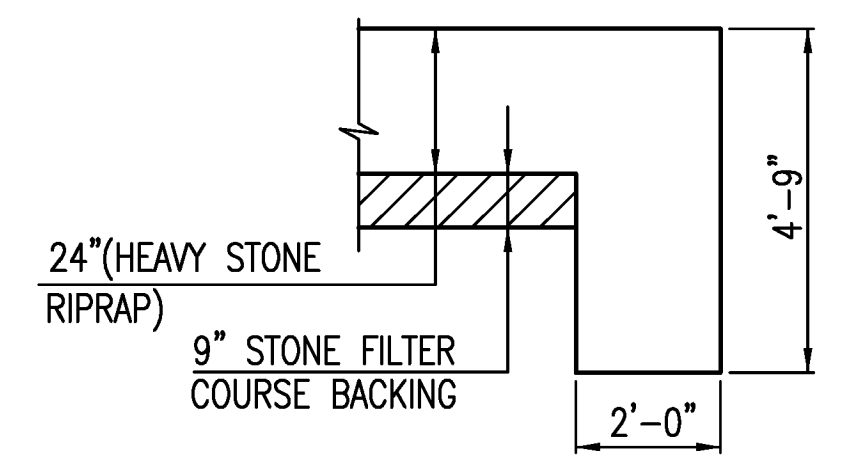
HEAVY DUTY (H.D.) COUPLER (>=36") NO SCALE

- NOTES
- BOLTS TO BE A-36 1 1/2" DIAMETER.
 - BOLTS, NUTS, WASHERS AND SLEEVES TO BE ZINC PLATED.
 - WASHERS TO BE 3 1/2" O.D. X 7 GAUGE.
 - SHIP WITH NUTS AND WASHERS PLACED ON BOLTS.



HEAVY DUTY (H.D.) COUPLER (<=30") NO SCALE

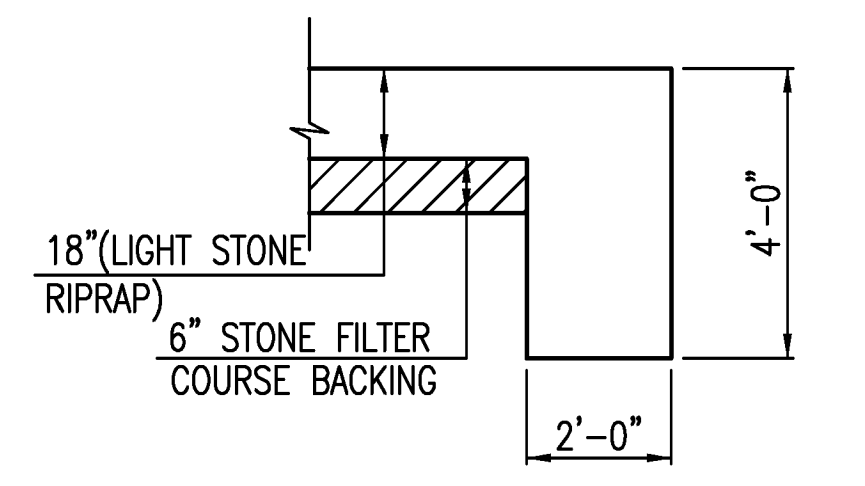
- NOTES
- BOLTS TO BE A-36 1 1/2" DIAMETER.
 - BOLTS, NUTS, WASHERS AND SLEEVES TO BE ZINC PLATED.
 - WASHERS TO BE 3 1/2" O.D. X 7 GAUGE.
 - SHIP WITH NUTS AND WASHERS PLACED ON BOLTS.



TYPICAL SECTION THRU TOEWALL NO SCALE

- NOTES
- ALL RIPRAP FOR THIS PROJECT SHALL BE NATURAL STONE. NEITHER BROKEN CONCRETE, FABRIC ENVELOPE, NOR PREMIXED DRY PACKAGED CONCRETE BAG ALTERNATES WILL BE ALLOWED, UNLESS INDICATED OTHERWISE.
 - TOEWALLS SHALL BE INSTALLED ALONG ALL UNPROTECTED EDGES OF STONE RIPRAP.
 - GROUTING OF THE SURFACE OF THE RIPRAP SHALL NOT BE PERFORMED, UNLESS INDICATED OTHERWISE. GROUTING OF THE TOEWALLS SHALL BE PERFORMED PER CITY SPECIFICATIONS.

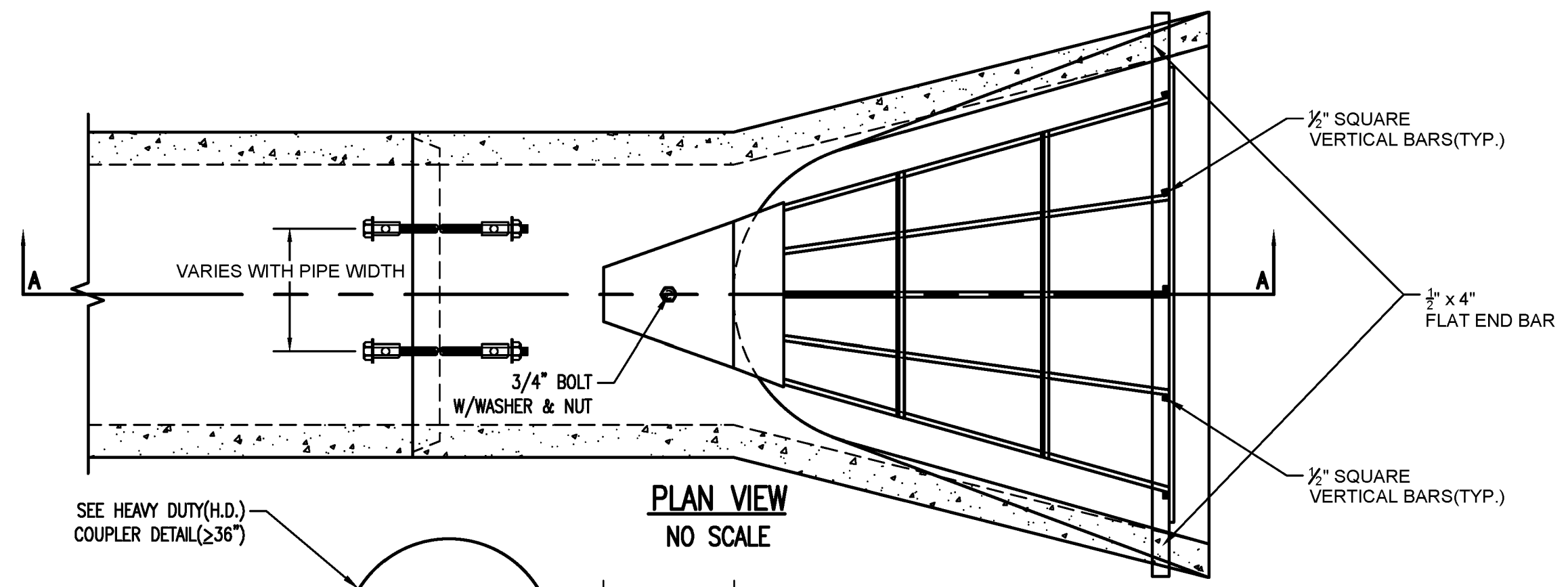
HEAVY STONE RIPRAP DETAILS



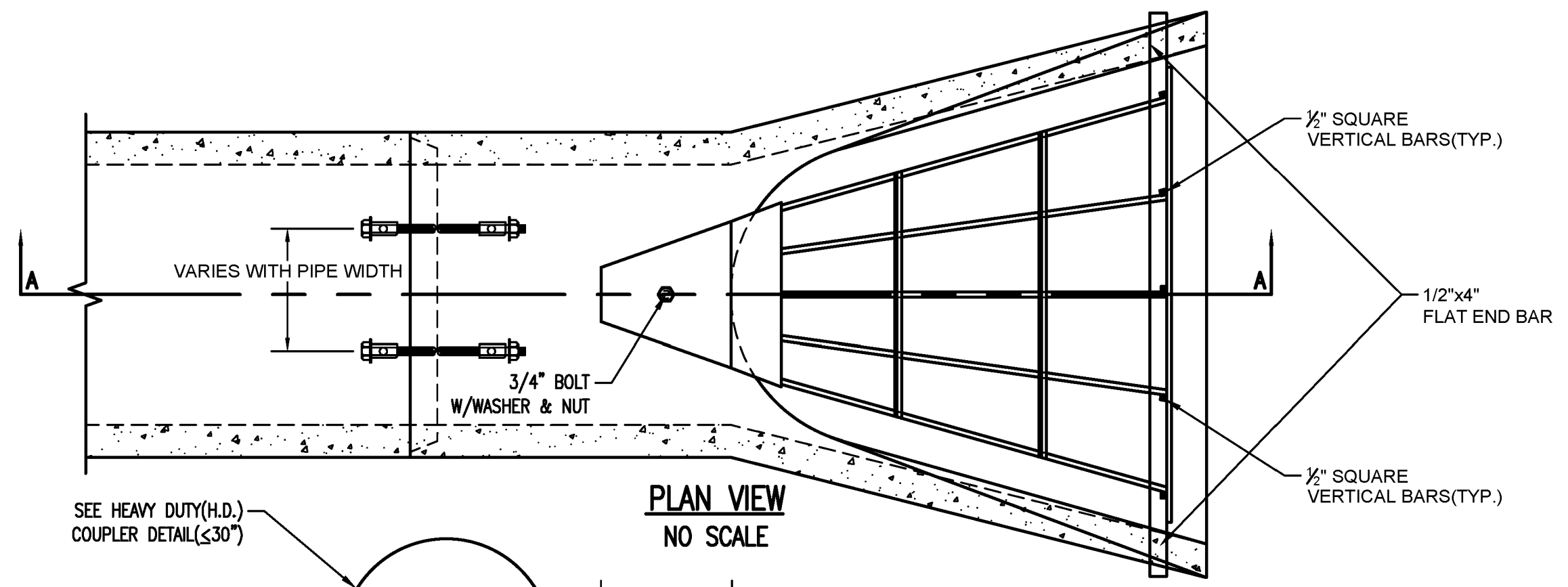
TYPICAL SECTION THRU TOEWALL NO SCALE

- NOTES
- ALL RIPRAP FOR THIS PROJECT SHALL BE NATURAL STONE. NEITHER BROKEN CONCRETE, FABRIC ENVELOPE, NOR PREMIXED DRY PACKAGED CONCRETE BAG ALTERNATES WILL BE ALLOWED, UNLESS INDICATED OTHERWISE.
 - TOEWALLS SHALL BE INSTALLED ALONG ALL UNPROTECTED EDGES OF STONE RIPRAP.
 - GROUTING OF THE SURFACE OF THE RIPRAP SHALL NOT BE PERFORMED, UNLESS INDICATED OTHERWISE. GROUTING OF THE TOEWALLS SHALL BE PERFORMED PER CITY SPECIFICATIONS.

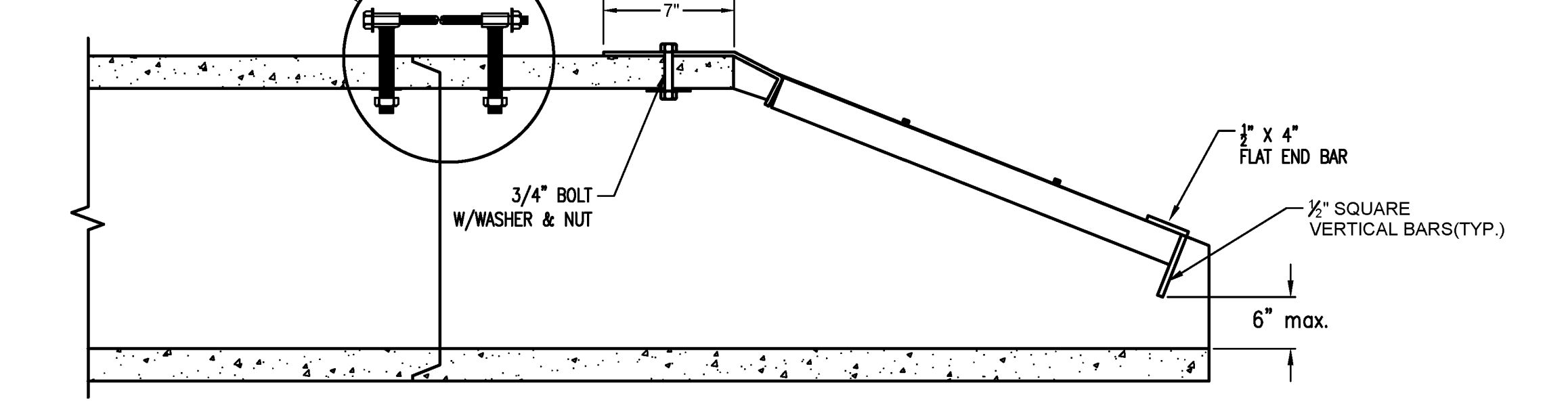
LIGHT STONE RIPRAP DETAILS



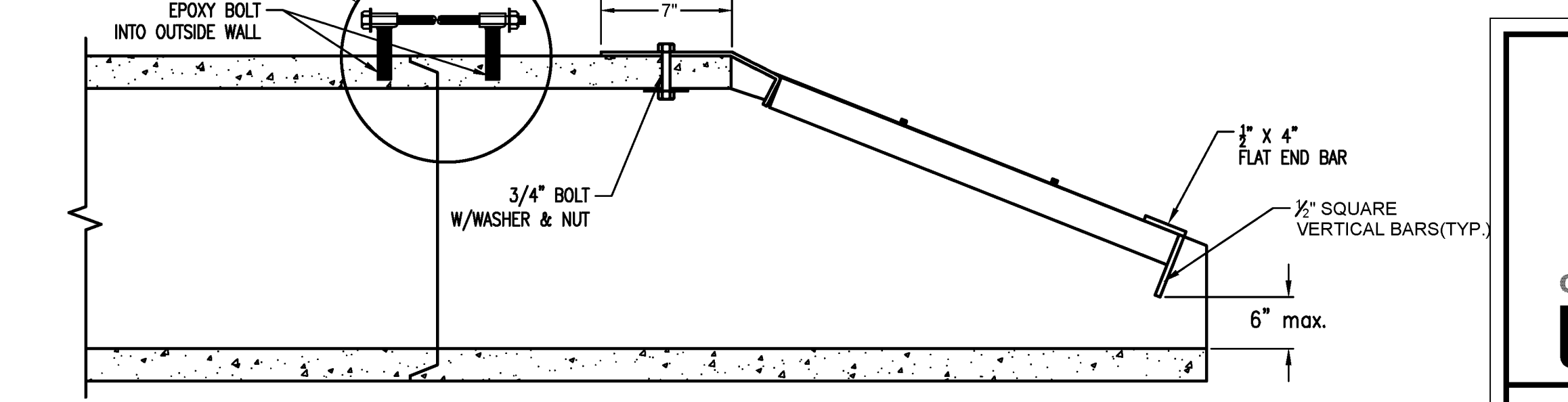
PLAN VIEW NO SCALE



PLAN VIEW NO SCALE



SECTION A-A



SECTION A-A

Sheet 07-18-2024 1:36:19 PM by CODY
 Plot Scale 1:10-01-2024 1:37:59 PM by JEFF CODY
 J:\Projects\2023\1010497_Artistic_Bunker Hill_Meritrust\00_230497_CAD\SHS\05_Civil_Plan\230497_CU502-D.dwg
 S:\Drawing Files\Project\00110497_Artistic_Bunker Hill_Meritrust\20112002\00112002\00112002.dwg - Base(1,23,15)



END SECTION, PIPE RESTRAINT COUPLER & END GRATE

CITY ENGINEER
GARY JANZEN, P.E.

PROJECT NUMBER 472-2024-086037	OCA NUMBER	DATE 01/2015
CITY ENGINEER'S OFFICE CITY HALL - SEVENTH FLOOR 455 NORTH MAIN STREET WICHITA, KANSAS 67202-1620 (316) 268-4501		DESIGN DRAWN SHEET 15 of 24