

# SANITARY SEWER IMPROVEMENTS

## TO SERVE SMOOTHIE KING MAIZE ROAD

2626 N MAIZE RD  
WICHITA, KS, 67205

PAUL GUNZELMAN, P.E. INTERIM CITY ENGINEER  
2023-018582PPS  
(53030982)

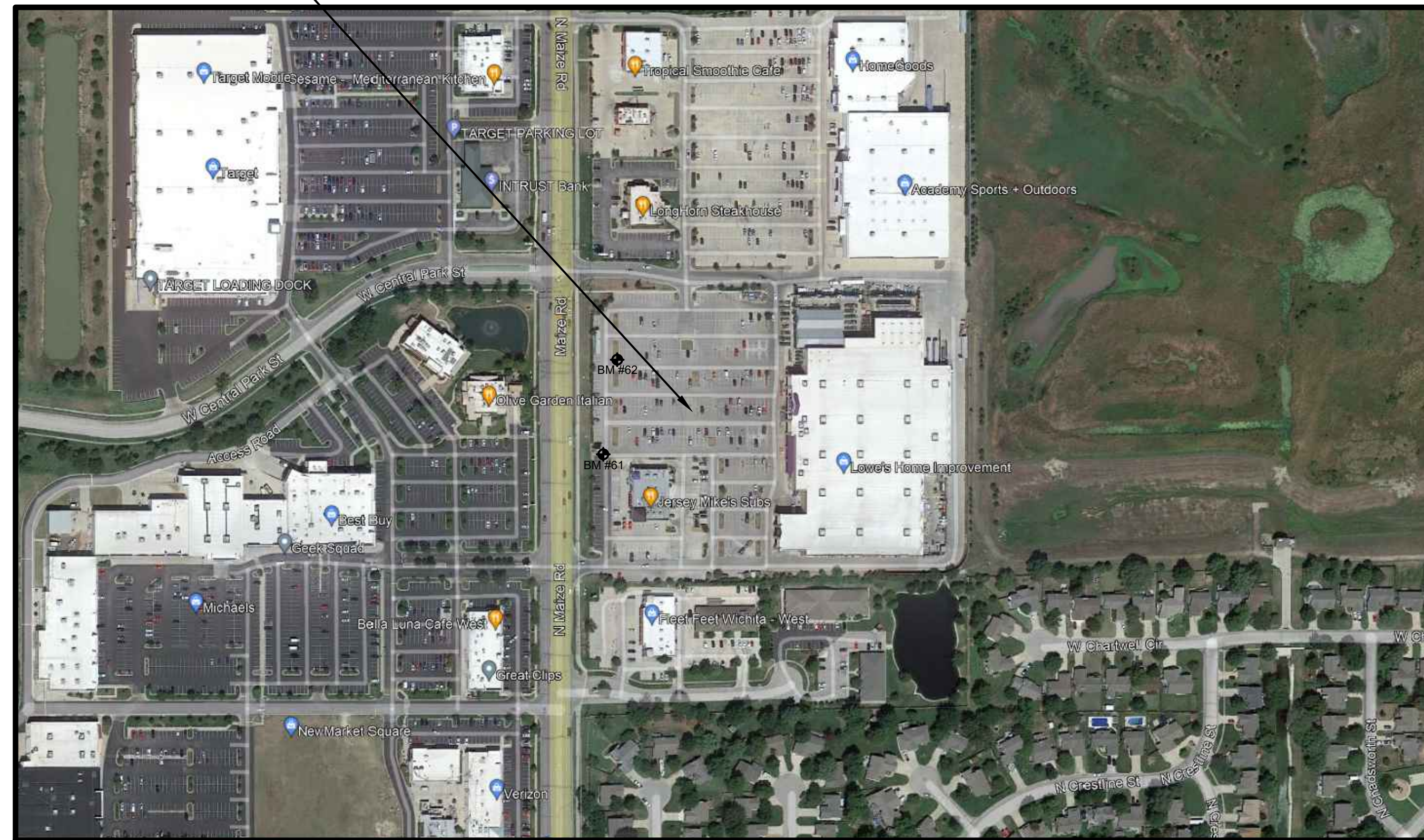
### GENERAL NOTES

1. THE CONTRACTOR SHALL COMPLY WITH ALL APPLICABLE SAFETY REGULATIONS. ALL CONSTRUCTION SHALL BE COMPLETED FOLLOWING CURRENT CITY STANDARD SPECIFICATIONS AND SPECIAL PROVISIONS
2. CONTRACTOR WILL BE REQUIRED TO PROVIDE NOTICE TO UTILITY COMPANIES A MINIMUM OF SEVENTY-TWO HOURS PRIOR TO ANY EXCAVATION. KANSAS ONE CALL 687-2470 THE CONTRACTOR MUST NOTIFY THE FOLLOWING IN CASE OF AN EMERGENCY

AT&T 1-800-246-8464  
BLACK HILLS ENERGY 1-800-694-8989  
CITY OF WICHITA WATER & SEWER 1-316-219-8921  
CITY OF WICHITA STORMWATER 1-316-268-4090  
CITY OF WICHITA TRAFFIC 1-316-268-4034  
COX COMMUNICATIONS 1-888-249-3530  
KANSAS GAS SERVICE 1-888-482-4950  
EVERGY 1-800-544-4857

3. UTILITY SERVICE LINES, POLES, ETC. ARE TO BE ADJUSTED AS NECESSARY BY OTHERS PRIOR TO CONSTRUCTION UNLESS THE PLANS SPECIFICALLY CALL FOR THEIR ADJUSTMENT BY THE CONTRACTOR OR UNLESS THE PLANS SPECIFICALLY IDENTIFY A UTILITY TO BE ADJUSTED BY ITS OWNER DURING CONSTRUCTION. EXISTING UTILITIES AND THEIR LOCATIONS, AS SHOWN ON THE PLANS, REPRESENT THE BEST INFORMATION OBTAINABLE FOR DESIGN. THE CONTRACTOR WILL BE REQUIRED TO WORK AROUND EXISTING UTILITIES WITHIN THE RIGHT-OF-WAY WHICH DO NOT CONFLICT WITH PROPOSED CONSTRUCTION.
4. RUBBLE FROM THE REMOVAL OF MISCELLANEOUS STRUCTURES AND EXCESS EXCAVATION WHICH IS TO BE WASTED SHALL BE DISPOSED OF ON SITES TO BE PROVIDED BY THE CONTRACTOR. THESE SITES SHALL BE APPROVED BY THE ENGINEER AS TO SUITABILITY, APPEARANCE AND SITE LOCATION. LOCATIONS, IN THE OPINION OF THE ENGINEER, THAT WILL LEAVE AN UNSIGHTLY APPEARANCE WILL NOT BE APPROVED. ALL DISPOSAL SITES MUST BE APPROVED BY THE KANSAS DEPARTMENT OF HEALTH AND ENVIRONMENT. MATERIAL EITHER STOCKPILED OR DISPOSED OF IN A FLOOD PLAIN WILL REQUIRE A KANSAS STATE BOARD OF AGRICULTURE PERMIT. ANY MATERIAL DUMPED IN WATERS OF THE UNITED STATES OF WETLANDS IS SUBJECT TO US CORPS OF ENGINEERS PERMITTING REGULATIONS. ANY MATERIAL BURIED OR STOCK PILED BEYOND APPROVED CONSTRUCTION LIMITS WILL REQUIRE ADDITIONAL ARCHAEOLOGICAL INVESTIGATIONS UNLESS BURIED IN A PREVIOUSLY APPROVED BORROW LOCATION.
5. TREES AND SHRUBS IN PUBLIC RIGHT-OF-WAY WHICH RE IN DIRECT CONFLICT WITH PROPOSED NEW CONSTRUCTION SHALL BE REMOVED BY THE CONTRACTOR WITH THE CITY ENGINEER'S APPROVAL. TREES AND SHRUBS WHICH ARE NOT IN DIRECT CONFLICT WITH PROPOSED NEW CONSTRUCTION SHALL BE SAVED AND PROTECTED FROM DAMAGE.
6. THE CONTRACTOR SHALL GIVE ALL PROPERTY OWNERS AND/OR TENANTS OF DEVELOPED PROPERTY ABUTTING THE CONSTRUCTION OF THE PROJECT A MINIMUM OF TEN DAYS NOTICE PRIOR TO START OF CONSTRUCTION
7. THE CONTRACTOR SHALL BE RESPONSIBLE FOR PRESERVING PROPERTY IRONS. THE CONTRACTOR WILL BE REQUIRED TO RE-ESTABLISH ANY PROPERTY IRONS WHICH ARE DAMAGED OR DESTROYED BY THIS CONSTRUCTION OPERATIONS SUCH IRONS SHALL BE RE-ESTABLISHED BY A LICENSED LAND SURVEYOR IN ACCORDANCE WITH STATE LAWS.
8. THE ENGINEERING DIVISION SHALL FIELD LOCATE WATER VALVES ONE TIME DURING CONSTRUCTION WHEN REQUESTED BY THE CONTRACTOR. IT SHALL BE THE CONTRACTORS RESPONSIBILITY TO PRESERVE SUCH FIELD LOCATIONS DURING THE CONSTRUCTION PROCESS. WATER VALVES, VALVE BOXES OR FIRE HYDRANTS DAMAGED DURING CONSTRUCTION SHALL BE REPAIRED BY CONTRACTOR AT HIS OWN EXPENSE. VALVE BOXES AND WATER METERS WITHIN THE PROJECT LIMITS SHALL BE ADJUSTED TO MATCH FINAL GRADES BY THE CONTRACTOR.
9. THE CONTRACTOR SHALL NOTIFY THE INSPECTING ENGINEER AND DAWNITA REINHARDT AT 316-268-4574 WITH THE CITY OF WICHITA WITH THE ANTICIPATED CONSTRUCTION START DATE AND NOTIFY THEM OF PROJECT COMPLETION. STAKING AND INSPECTION FOR THIS PROJECT WILL BE THE RESPONSIBILITY OF THE CONTRACTOR
10. IF TRAFFIC WILL BE IMPACTED BY CONSTRUCTION, A TRAFFIC CONTROL PLAN MUST BE SUBMITTED AND APPROVED BY THE CITY TRAFFIC ENGINEER, MIKE ARMOUR AT TRAFFIC@WICHITA.GOV BEFORE CONSTRUCTION CAN BEGIN. THE CONTRACTOR SHALL BE RESPONSIBLE FOR ALL TRAFFIC CONTROL MEASURES TO FACILITATE CONSTRUCTION. ALL CONSTRUCTION ZONE MARKINGS AND SIGNAGE SHALL CONFORM TO THE LATEST VERSION OF THE MANUAL ON UNIFORM TRAFFIC CONTROL DEVICES AS PUBLISHED BY THE US DEPT. OF TRANSPORTATION, FEDERAL HIGHWAY ADMINISTRATION. ALL COSTS ASSOCIATED WITH CONSTRUCTION MARKINGS AND SIGNAGE SHALL BE THE CONTRACTORS RESPONSIBILITY.
11. ALL ELEVATIONS ARE NAVD 88.
12. ALL AREAS DISTURBED DURING CONSTRUCTION THAT WILL NOT BE UNDER PROPOSED PAVEMENT SHALL BE RESTORED TO MATCH EXISTING CONDITIONS.
13. ANY SIDEWALK, DRIVE APPROACH, CURB, OR STREET PAVEMENT REMOVED TO CONSTRUCT PROJECT MUST HAVE A PAVEMENT CUT PERMIT AND BE REPLACED BY THE CITY CONTRACTOR. PERMITS CAN BE OBTAINED BY CALLING 316-268-4501 OR 316-268-4480
14. CITY MAINTENANCE OF SANITARY SEWER ENDS AT THE LAST STRUCTURE IN THE EASEMENT OR RIGHT-OF-WAY.
15. A PORTION OF EXCESS EXCAVATED MATERIAL SHALL BE MOUNDED AROUND MANHOLES WHICH EXTEND MORE THAN ONE FOOT ABOVE THE EXISTING GROUND. SUCH MOUND SHALL BE CONSTRUCTED WITH NEW DEVELOPMENT A SIX FOOT DIAMETER FLAT TOP WITH 4 TO 1 SIDE SLOPES DOWN TO THE ORIGINAL GROUND. THE ELEVATION OF THE FLAT TOP OF THE MOUND
16. GEOTECHNICAL REPORT AVAILABLE UPON REQUEST.
17. ALL APPLICABLE FEES (TAP, EQUITY, IN LIEU OF & MAIN BENEFIT) MUST BE PAID BEFORE ANY CONNECTIONS CAN BE MADE ON THIS PROJECT. QUOTES CAN BE OBTAINED ON FEES BY CALLING 316-268-4555
18. ALL STUBS AND CAPPED PIPES SHALL BE LOCATED WITH GREEN PLASTIC TAPE IN THE SAME MANNER AS RISERS

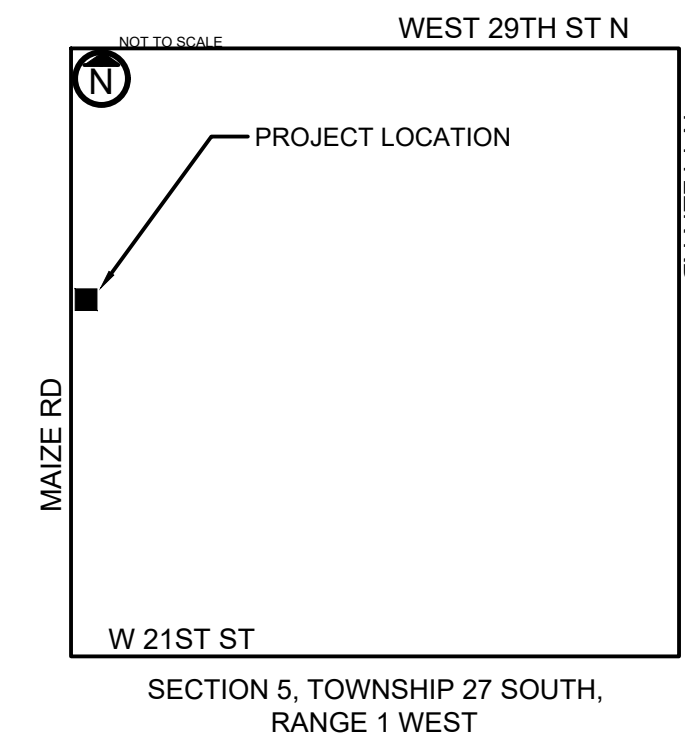
PROPOSED  
IMPROVEMENTS



17. CONNECTING TO EXISTING MANHOLES: PRIOR TO LAYING SEWER LINES USING EXISTING STUBS IN EXISTING MANHOLES, THE CONTRACTOR SHALL EXPOSE AND VERIFY THE ELEVATION, GRADE AND ALIGNMENT OF EXISTING STUBS AND NOTIFY THE ENGINEER OF ANY DEVIATION FROM THE PLANS. WHERE THE STUB IS UNUSABLE DUE TO ELEVATION GRADE OR ALIGNMENT, THE CONTRACTOR SHALL REMOVE THE STUB AND PLUG THE HOLE, AND RESHAPE THE EXISTING MANHOLE INVERT TO PROVIDE SMOOTH FLOW. WHERE CONNECTING TO AN EXISTING MANHOLE THAT DOES NOT HAVE AN EXISTING STUB, THE CONTRACTOR SHALL CORE CUT INTO EXISTING MANHOLE WALL TO MAKE CONNECTION USING APPROVED WATER STOP GASKET, AND RESHAPE THE EXISTING MANHOLE INVERT TO PROVIDE SMOOTH FLOW. THE COST TO CONNECTING TO EXISTING MANHOLES IS INCIDENTAL TO THE PROJECT.
18. CONTRACTOR SHALL LIMIT THE EXTENT OF TRENCH OPEN OVERNIGHT AND WEEKENDS TO LESS THAN 50 FEET
19. CONTRACTOR SHALL PROVIDE POSITIVE DRAINAGE AWAY FROM ALL MANHOLE COVERS
20. THE CONTRACTOR SHALL PREVENT ANY CONSTRUCTION DEBRIS FORM ENTERING THE EXISTING SANITARY SEWER DURING CONSTRUCTION.
21. THE CONTRACTOR SHALL BE RESPONSIBLE FOR MAINTAINING CONTINUOUS FLOW OF SEWAGE THROUGH CONSTRUCTION. CONTRACTORS PROPOSED METHOD FOR MAINTAINING SEWAGE FLOW SHALL BE SUBMITTED AND APPROVED BY THE SEWER MAINTENANCE DIVISION (316-268-4073) PRIOR TO STARTING AND BY-PASSING OF SEWAGE FLOWS.
22. ANY OVER EXCAVATION FROM MANHOLE AND PIPE REMOVAL SHALL BE BACKFILLED WITH AB-3 COMPACTED TO 90-95% ASTM D698
23. CONTRACTOR SHALL PROTECT FROM DAMAGE AND SUPPORT EXISTING UTILITIES THROUGH CONSTRUCTION AS APPROVED BY THE UTILITY OWNER AND THE ENGINEER AT THE CONTRACTOR EXPENSE.

D. Reinhardt - City of Wichita, Inspector  
Release Date: 8/21/2024  
: apr 8/30/2024

### SITE SECTION MAP



### SHEET INDEX

1. SITE PLAN
2. PLAN AND PROFILE
3. EROSION CONTROL PLAN
4. SANITARY DETAILS
5. SANITARY DETAILS
6. EROSION CONTROL DETAILS
7. EROSION CONTROL DETAILS
8. EROSION CONTROL DETAILS
9. EROSION CONTROL DETAILS
10. EROSION CONTROL DETAILS

APPROVED AS NOTED  
BY WICHITA PUBLIC  
WORKS ENGINEERING  
DIVISION

ENGINEERING SHAWN MELLIES 11/30/2023

UTILITIES DEB ARY 11/30/2023

### NOTE TO CONTRACTORS

INSPECTION AND TESTING FOR THIS PROJECT IS TO BE PROVIDED BY A LICENSED CONSULTING ENGINEERING FIRM UNDER CONTRACT WITH THE OWNER/DEVELOPER. SAID INSPECTION TO BE IN ACCORDANCE WITH THE CITY OF WICHITA STANDARD CONSTRUCTION ENGINEERING PRACTICES AND CERTIFIED BY A LICENSED PROFESSIONAL ENGINEERING IN THE STATE OF KANSAS. NO WORK SHALL BE PERFORMED BY THE CONTRACTOR WITHOUT SUCH INSPECTION NOR SHALL ANY WORK BE COMMENCED WITHOUT WRITTEN AUTHORIZATION BY CITY ENGINEERING. ALL CONSTRUCTION AND MATERIALS SHALL COMPLY WITH THE CURRENT CITY OF WICHITA SPECIFICATIONS AND STANDARD AND SPECIAL PROVISIONS. (ON FILE AND AVAILABLE AT WICHITA.GOV)

AN APPROVED COPY OF THESE PLANS SIGNED BY CITY STAFF ARE REQUIRED ON-SITE

### PROJECT BENCHMARK:

- BM #61: CHISELED SQUARE CUT SET ON BACK OF CURB SOUTHEAST END OF MULTI-BUSINESS SIGN, NORTHWEST OF BUILDING AT 2616 N MAIZE RD. ELEV=1353.22
- BM #62: CHISELED SQUARE CUT SET ON BACK OF CURB ON SOUTH END OF CURB ISLAND BEING FOURTH ISLAND NORTH OF BUILDING AT 2616 N MAIZE RD ON WEST SIDE OF LOWES PARKING LOT AS SHOWN IN SURVEY. ELEV=1352.73

### ENGINEER OF RECORD

AUBRY ENTERPRISES  
JAY D. O'DELL, P.E.  
6036 METCALF AVE  
OVERLAND PARK, KS 66202  
JAY.ODELL@AUBRYENTERPRISES.COM



Know what's below.  
Call before you dig.

### AS-BUILTS

Contractor: Project Inspector:

McCullough  
Excavation

Pablo Oden

Date: 8/16/2024



117 E. Lewis, Wichita, KS 67202 (316)264-0242



JAY D. O'DELL  
STATE PE# 25890 11/30/2023

EAST SIDE  
INVESTMENTS LLC

115 S HYDRAULIC AVE,  
WICHITA, KS 67211

CLIENT

ENGINEERING FIRM OF RECORD  
**AUBRY ENTERPRISES**  
ENGINEERING LOGISTICS/AGRICULTURE  
Responsibly Sustainable

KANSAS OFFICE  
6036 METCALF AVE  
OVERLAND PARK, KS 66202

COLORADO OFFICE  
48700 COUNTY RD FF  
AKRON, COLORADO 80720

REV	DESCRIPTION	DATE

### PPS PLANS

11/30/2023

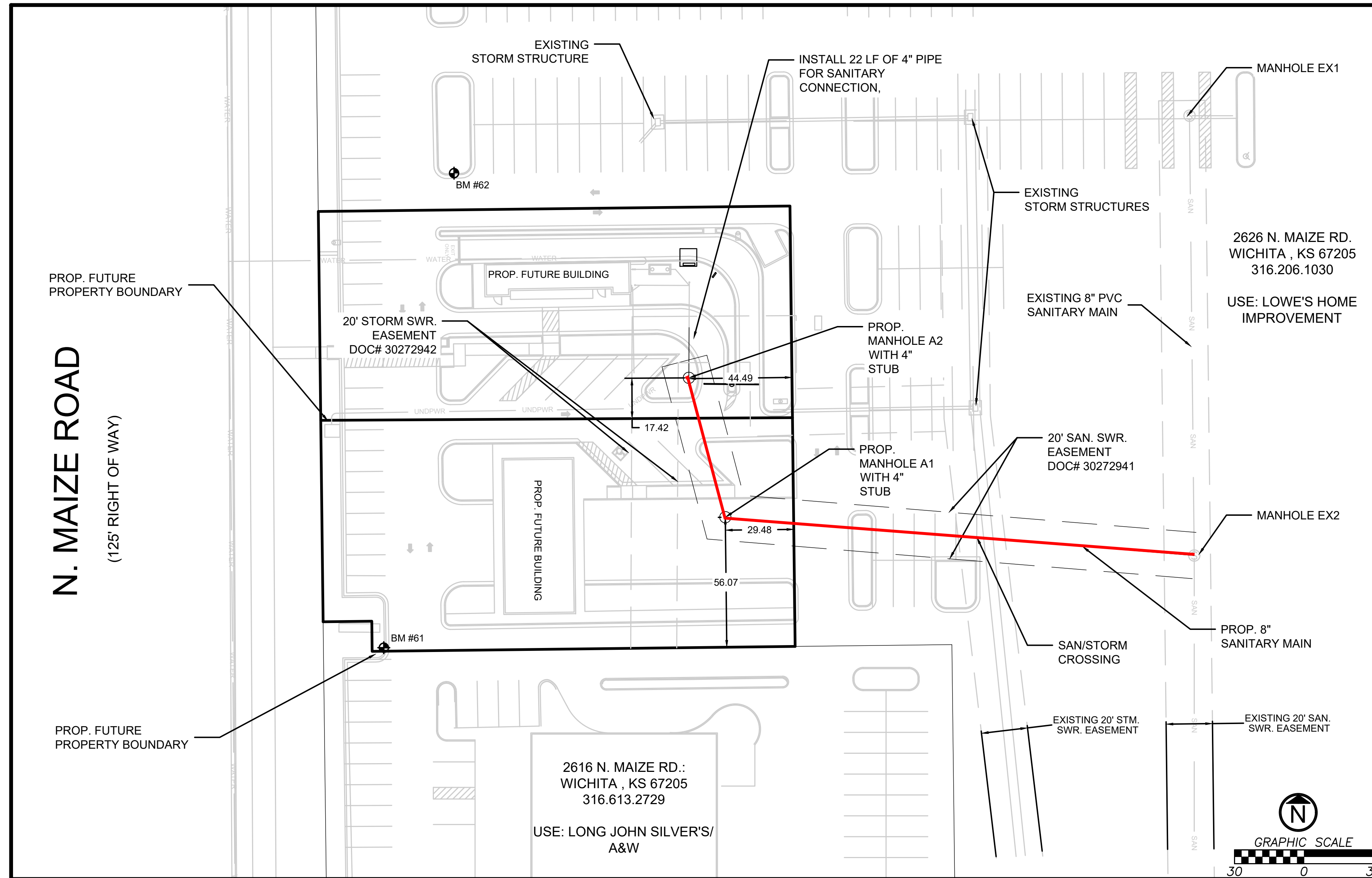
### SMOOTHIE KING MAIZE RD

2626 N MAIZE RD  
WICHITA, KS, 67205

### TITLE

# GENERAL LAYOUT

## SITE PLAN



### Separation of Water Mains and Sewers.

Section 803.4, "Separation of Water Mains and Sewers", delete subsection "a" and replace with the following subsections:

a) Gravity Sanitary Sewers. When potable water pipes and gravity sanitary sewers are laid parallel to each other, the horizontal distance between them shall be not less than 10 feet regardless of elevation difference. The distance shall be measured from edge to edge. The laying of water pipes and sanitary sewers shall be in separate trenches with undisturbed earth between them. In cases where it is not practical to maintain a 10-foot separation, equivalent protection shall be required and approved by KDHE.

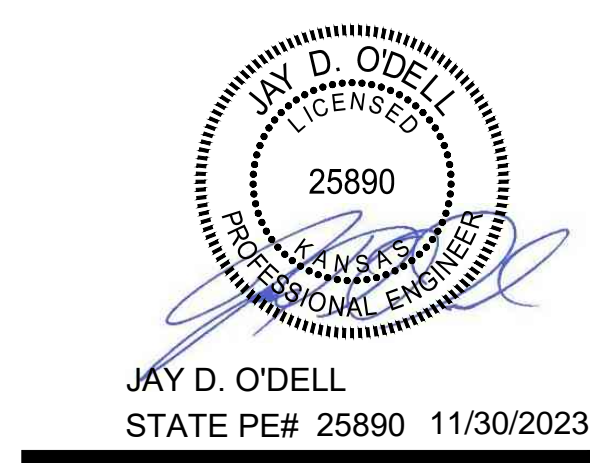
b) When a water pipe and a gravity sanitary sewer cross and there is 2 feet or more of separation (clear no special requirements or limitations are provided herein. In cases where it is not practical to maintain a 2-foot separation, equivalent protection shall be required and approved by KDHE. Joints in the sewer pipe shall be located as far as practical from the intersected water main.

c) Pressure Sanitary Sewers. When a water pipe and pressure sanitary sewer are laid parallel to each other, the same separation rules apply as for gravity pipe.

When a water pipe (including service lines) and a pressure sanitary sewer cross and the pressure sewer is 2 feet or more (clear space) below the water pipe, no special requirements or limitations are provided herein. In cases where it is not practical to maintain a 2-foot separation or the sewer is above, equivalent protection shall be required and approved by KDHE.

### PROJECT BENCHMARK:

- BM #61: CHISELED SQUARE CUT SET ON BACK OF CURB SOUTHEAST OF MULTI-BUSINESS SIGN, NORTHWEST OF BUILDING AT 2616 N MAIZE RD. ELEV=1353.22
- BM #62: CHISELED SQUARE CUT SET ON BACK OF CURB ON SOUTH END OF CURB ISLAND BEING FOURTH ISLAND NORTH OF BUILDING AT 2616 N MAIZE RD ON WEST SIDE OF LOWES PARKING LOT AS SHOWN IN SURVEY. ELEV=1352.73



CLIENT  
**EAST SIDE INVESTMENTS LLC**  
 115 S HYDRAULIC AVE,  
 WICHITA, KS 67211

ENGINEERING FIRM OF RECORD  
**AUBRY ENTERPRISES**  
 ENGINEERING | LOGISTICS | AGRICULTURE  
*Responsibly Sustainable*  
 COLORADO OFFICE  
 48700 COUNTY RD FF  
 AKRON, COLORADO 80720  
 KANSAS OFFICE  
 6036 METCALF AVE  
 OVERLAND PARK, KS 66202

REV	DESCRIPTION	DATE

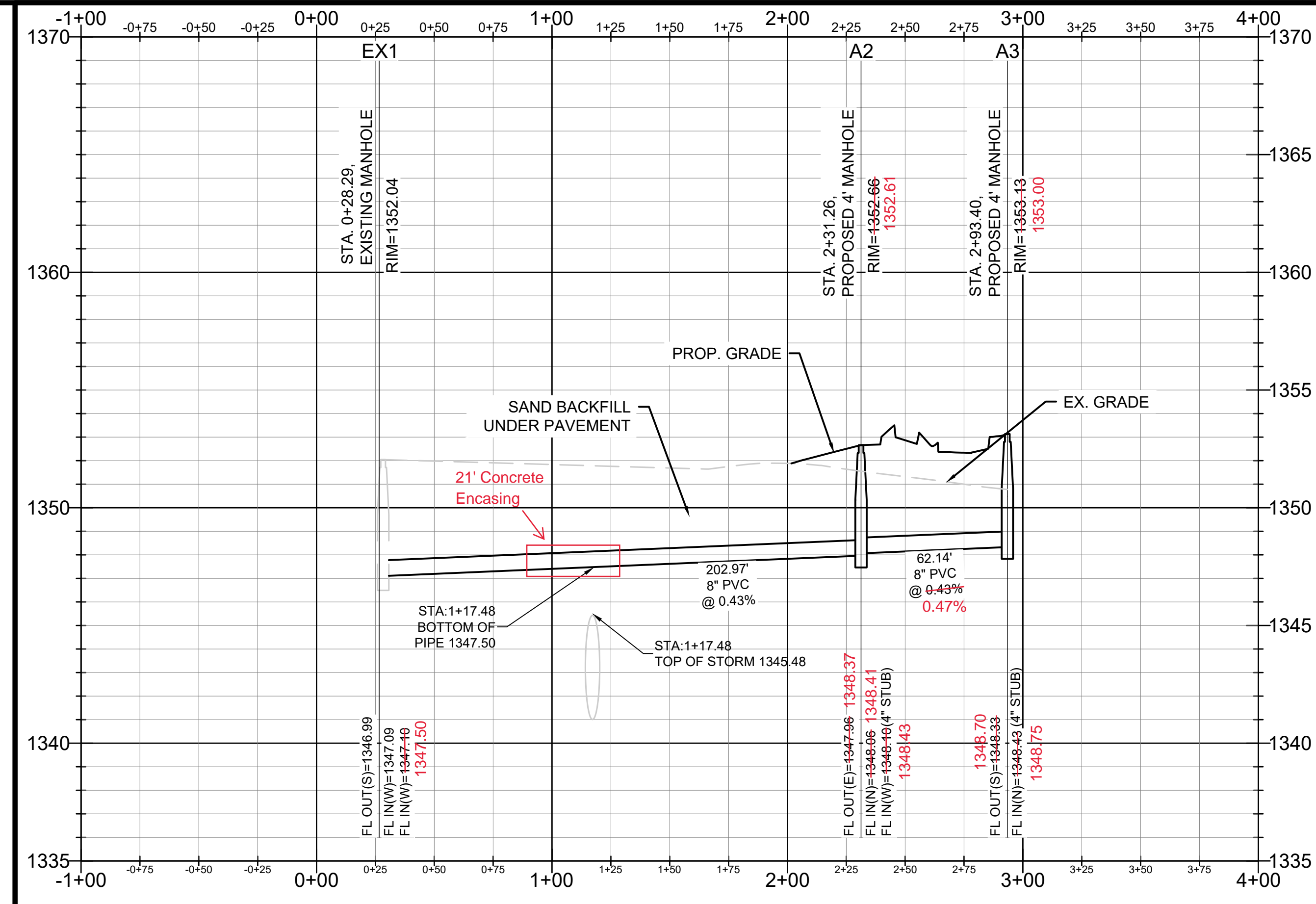
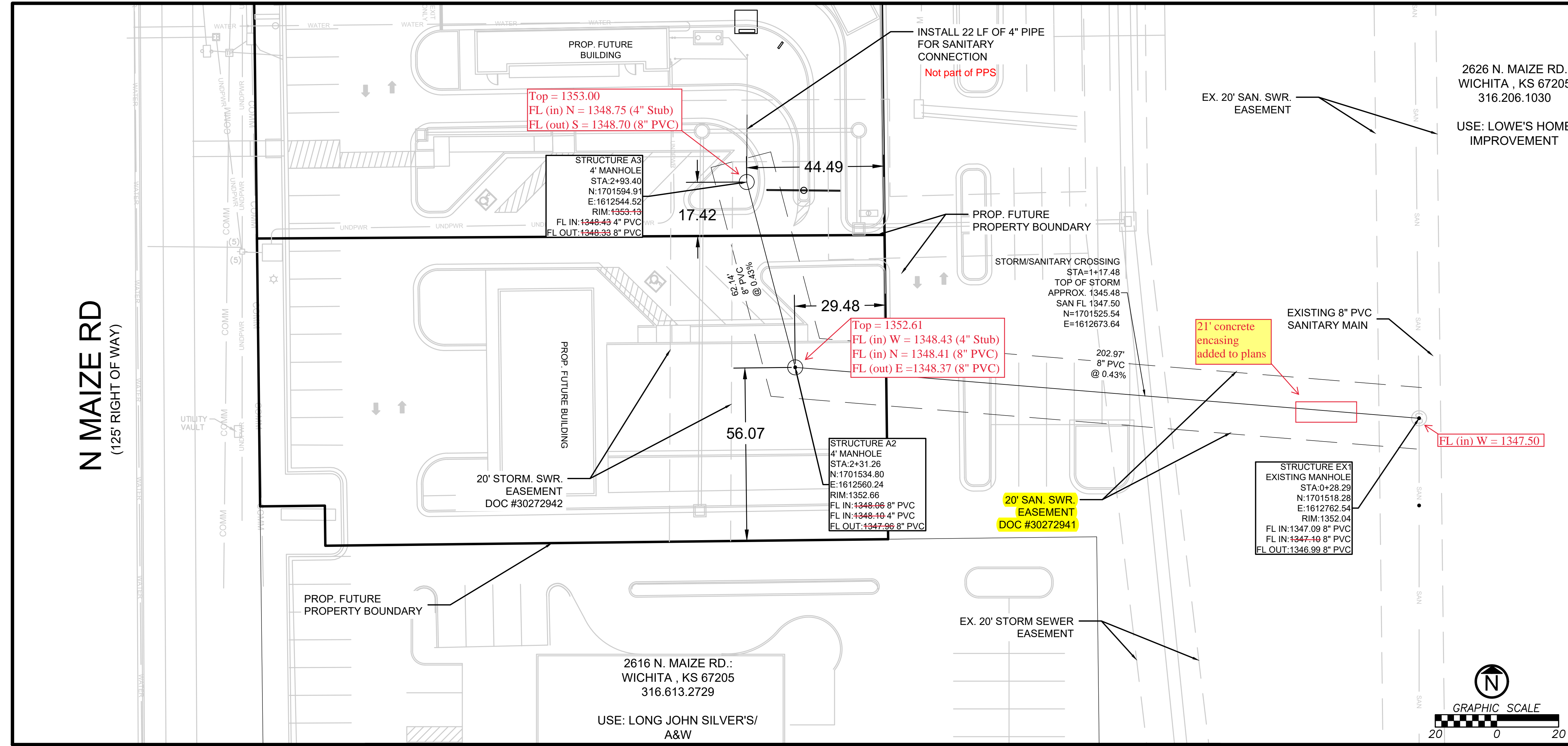
PPS PLANS

11/30/2023

SMOOTHIE KING MAIZE RD

2626 N MAIZE RD  
 WICHITA, KS, 67205

SITE PLAN



FLUSHED AND VIBRATED SAND BACKFILL UNDER ALL PAVEMENT AREAS

CONTRACTOR TO FIELD VERIFY ALL LOCATIONS AND DEPTHS OF EXISTING UTILITIES.

**Connection to Existing Manholes or Inlets**

When it is necessary to connect a new sewer to an existing inlet or manhole which does not have a stub to facilitate this connection, the Contractor shall core drill into the manhole or inlet unless otherwise approved by the Engineer. All repair work necessary to close the opening made to facilitate the installation of the new pipe shall conform to the requirements for new construction as specified in these specifications for the type of manhole or inlet involved. The floor of the manhole or inlet shall be modified such that smooth channels will be formed from all inlet pipes to the outlet pipe such that the manhole or inlet will be self-cleaning and free of areas where solids could be deposited as water flows through the structure in accordance with such requirements specified for new manhole or inlet construction.

No payment will be made for connecting new sewer pipes to existing manholes or inlets and all costs for completing this work shall be considered as subsidiary to the other items of work except when a bid item appears in the proposal for this work.



**EAST SIDE INVESTMENTS LLC**  
115 S HYDRAULIC AVE,  
WICHITA, KS 67211

**AUBRY ENTERPRISES**  
ENGINEERING/LOGISTICS/AGRICULTURE  
Responsibly Sustainable

KANSAS OFFICE  
6036 METCALF AVE  
OVERLAND PARK, KS 66202

COLORADO OFFICE  
48700 COUNTY RD FF  
AKRON, COLORADO 80720

REV	DESCRIPTION	DATE

**PPS PLANS**

11/30/2023  
**SMOOTHIE KING MAIZE RD**

2626 N MAIZE RD  
WICHITA, KS, 67205

**PLAN AND PROFILE**  
**2**