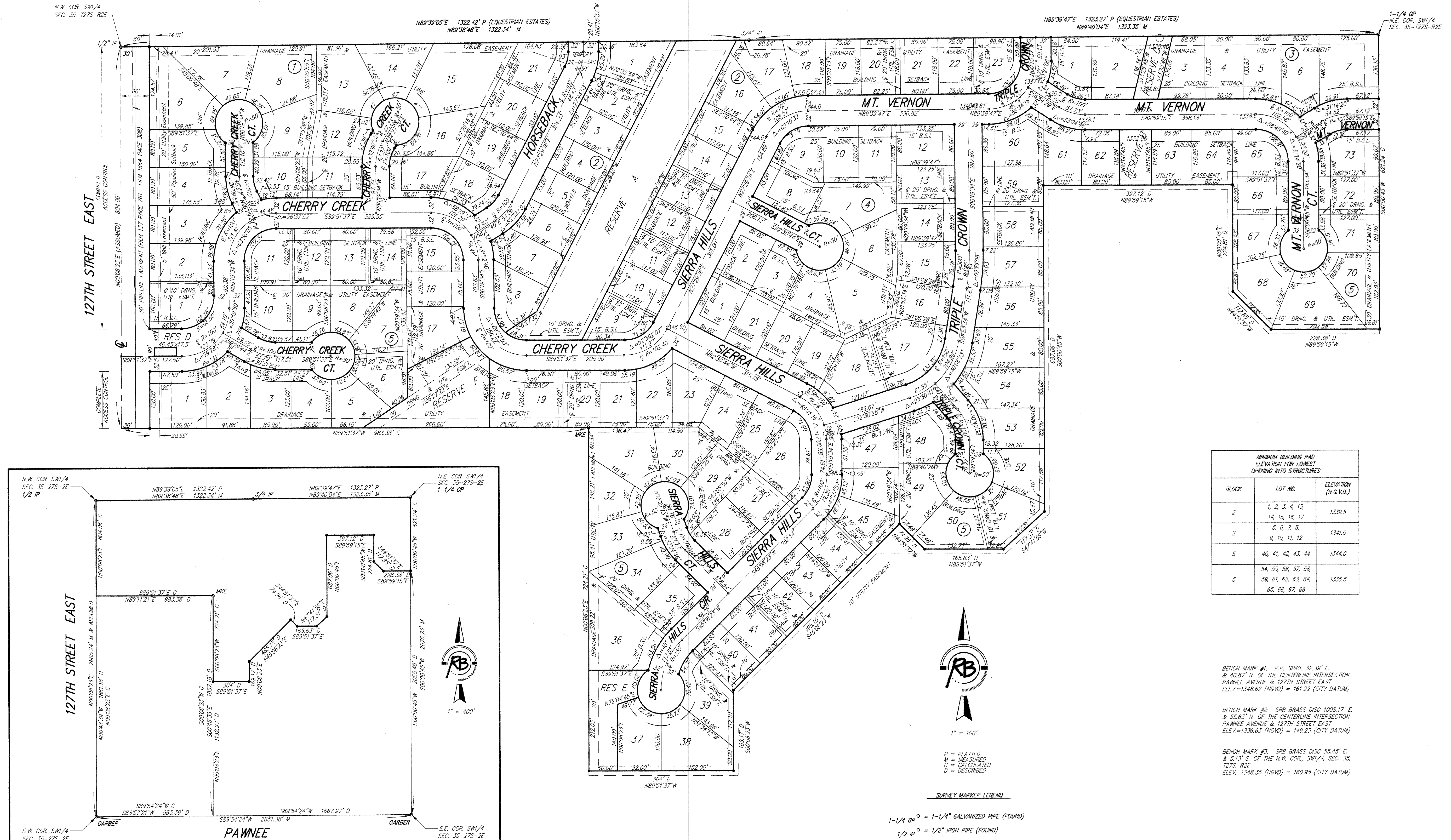


# SIERRA HILLS

## An Addition to Wichita, Sedgwick County, Kansas

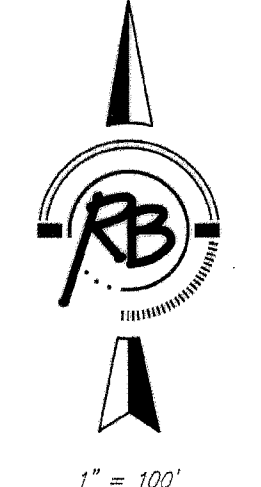


BLOCK	LOT NO.	ELEVATION (N.G. V.D.)
2	1, 2, 3, 4, 13	1,339.5
	14, 15, 16, 17	1,341.0
	5, 6, 7, 8	1,341.0
5	40, 41, 42, 43, 44	1,344.0
	54, 55, 56, 57, 58	1,335.5
5	59, 61, 62, 63, 64	1,335.5
	65, 66, 67, 68	1,335.5

BENCH MARK #1: R.R. SPIKE 32.39' E & 40.87' N. OF THE CENTERLINE INTERSECTION PAWNEE AVENUE & 127TH STREET EAST. ELEV.=1348.62 (NGVD) = 161.22 (CITY DATUM)

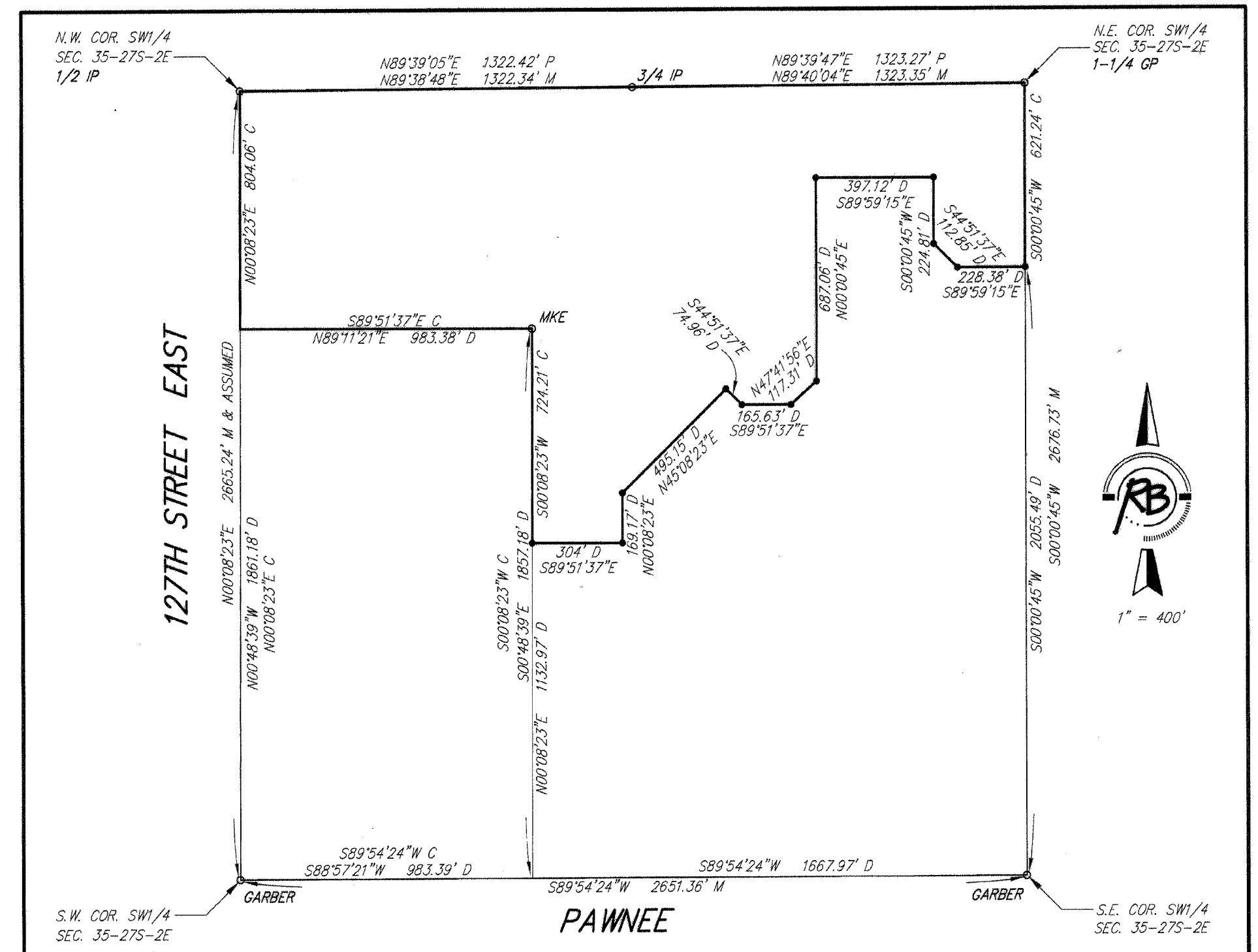
BENCH MARK #2: SRB BRASS DISC 1008.17' E & 55.63' N. OF THE CENTERLINE INTERSECTION PAWNEE AVENUE & 127TH STREET EAST. ELEV.=1336.63 (NGVD) = 149.23 (CITY DATUM)

BENCH MARK #3: SRB BRASS DISC 55.45' E & 5.13' S. OF THE N.W. COR., SW1/4, SEC. 35, T27S, R2E. ELEV.=1348.35 (NGVD) = 160.95 (CITY DATUM)

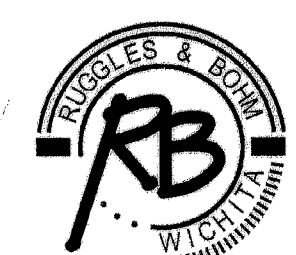


P = PLATTED  
M = MEASURED  
C = CALCULATED  
D = DESCRIBED

- SURVEY MARKER LEGEND**
- 1-1/4 GP = 1-1/4" GALVANIZED PIPE (FOUND)
  - 1/2 IP = 1/2" IRON PIPE (FOUND)
  - 3/4 IP = 3/4" IRON PIPE (FOUND)
  - MKE = 5/8" REBAR W/MKE CAP (FOUND)
  - GARBER = 5/8" REBAR W/GARBER CAP (FOUND)
  - = 5/8" REBAR W/R&B CAP (SET)



DWG FILE: 01951FP-W.C.  
PROJECT NO. 01E01951P  
DECEMBER 3, 2002



**Ruggles & Bohm, P.A.**  
Engineering, Surveying, Land Planning  
924 North Main  
Wichita, Kansas 67203  
www.rbkansas.com  
(316) 264-8008  
(316) 264-4621 fax  
E-mail: info@rbkansas.com