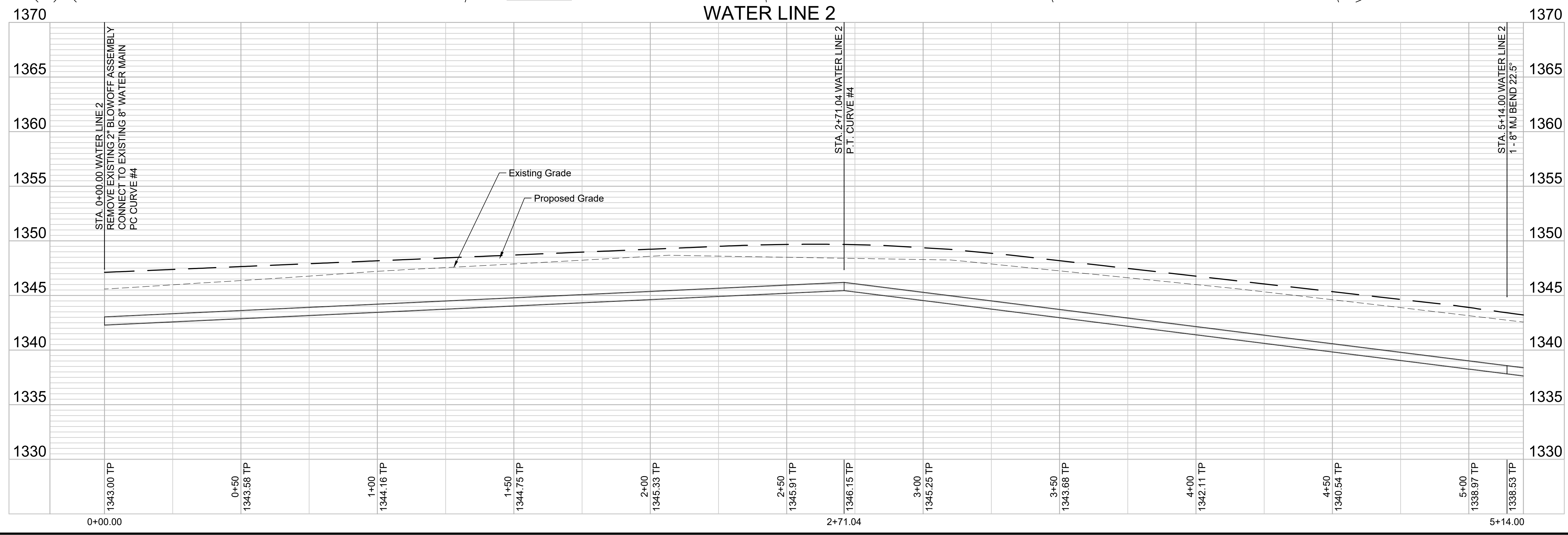
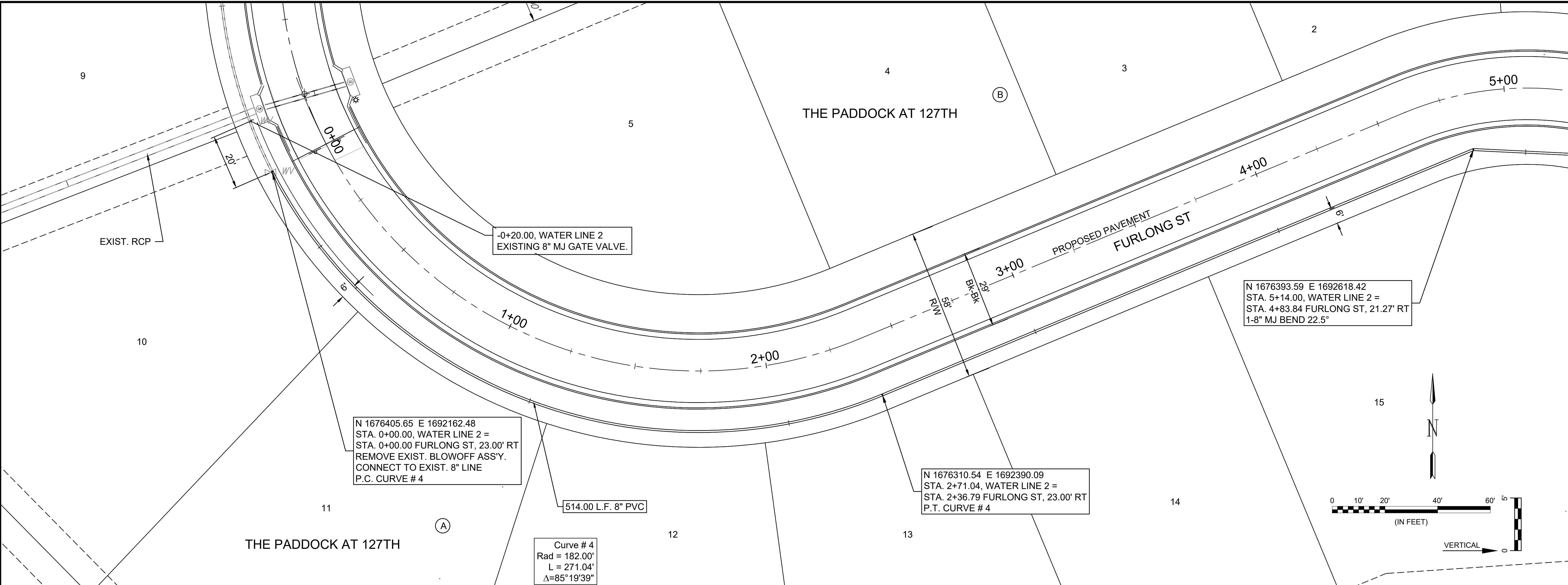




© 2023 GARVER, LLC  
 THIS DOCUMENT, ALONG WITH THE IDEAS AND DESIGNS CONVEYED HEREIN, SHALL BE CONSIDERED INSTRUMENTS OF PROFESSIONAL SERVICE AND ARE PROPERTY OF GARVER, LLC. ANY USE, REPRODUCTION, OR DISTRIBUTION OF THIS DOCUMENT, ALONG WITH THE IDEAS AND DESIGN CONTAINED HEREIN, IS PROHIBITED UNLESS AUTHORIZED IN WRITING BY GARVER, LLC OR EXPLICITLY ALLOWED IN THE GOVERNING PROFESSIONAL SERVICES AGREEMENT FOR THIS WORK.

1995 Midfield Road  
 Wichita, KS 67209  
 (316) 264-8008



File: L:\2022\22T41005 - Paddock Addition Phase 2\Drawings\DESIGN\WATER\WATER LINE 2 (3).dwg Last Save: 8/5/2024 11:15 AM Last saved by: SOSchmidt  
 Last plotted by: Schmidt, Stephen O. Plot Style: --- Plot Scale: 1:2,884.9 Plot Date: 8/5/2024 11:48 AM Plotter used: None

REV.	DATE	DESCRIPTION	BY



CITY OF WICHITA  
 WICHITA, KANSAS

THE PADDOCK AT 127TH  
 WATER - PHASE 2

WATER LINE 2  
 - (1)

JOB NO.: 22T41005  
 DATE: AUGUST 2024  
 DESIGNED BY: .  
 DRAWN BY: .

BAR IS ONE INCH ON ORIGINAL DRAWING  
 IF NOT ONE INCH ON THIS SHEET, ADJUST SCALES ACCORDINGLY.

DRAWING NUMBER

SHEET NUMBER **7** OF **19**